

# Unique service for unique cases.

Custom-made devices

20 years of  
experience



# The golden secret of implant dentistry.



Dr. Andrew Dawood, London, United Kingdom

«I have used the custom device workshop at Nobel Biocare for many years to provide me and my patients with helpful and sometimes innovative bespoke parts for small or very large problems, ranging from the simple adaptation of existing designs, e.g. a wide platform angled abutment for Brånemark or Replace Systems, to the design and fabrication of entire implant solutions, as in the case of the «bifunctional implant» for simultaneous nasal and oral reconstruction.»

## **We cater to needs where our core assortment is not sufficient**

Nobel Biocare is the founder of modern implant dentistry. For more than 40 years we have been at the forefront of implant-based restorations by supporting clinicians worldwide in their efforts to improve patients' quality of life. We take the responsibility of our heritage very seriously. This means that we also cater to needs where our core assortment is not sufficient. Clinical indications may be so complex that only sophisticated custom-made solutions are the right answer.

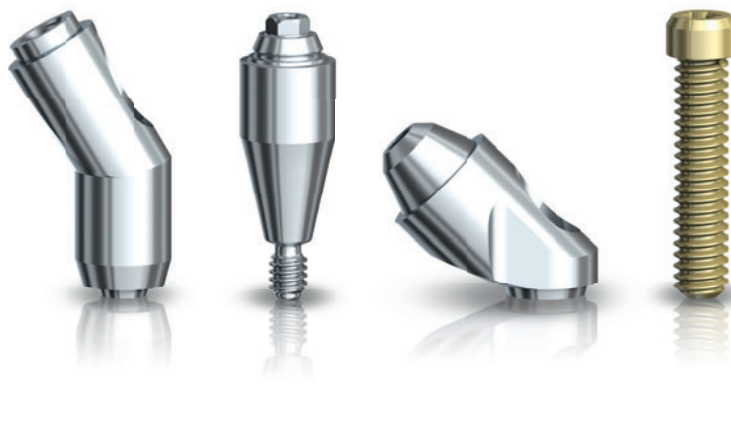
## **Unique service with 20 years of experience**

- Custom-made solutions tailored to fit a unique and one-time patient need.
- Close cooperation between dental professionals and some of the most skilled and experienced precision-instrument engineers in the industry.
- Swedish production sites in Gothenburg and Karlskoga utilizing manual production set-up and quality control of each custom-made device.

## **Are custom-made devices the right solution for your patient?**

First contact your Nobel Biocare sales office to decide whether a custom-made device is required. If yes, fill in the online prescription form and follow the instructions on [www.nobelbiocare.com/custom](http://www.nobelbiocare.com/custom).

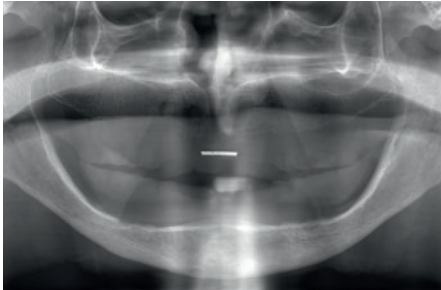
A custom-made device is a product fabricated especially for a named patient according to specific characteristics and prescribed by an appropriately qualified doctor, who assumes full responsibility. Clinicians must order and specify each custom-made device via a prescription form. Each request is only valid for one patient and for one indication or treatment. Repeat production of identical products is not possible for regulatory reasons.



# Unique products for improved quality of life.

## **Bifunctional implant for simultaneous nasal and oral reconstruction**

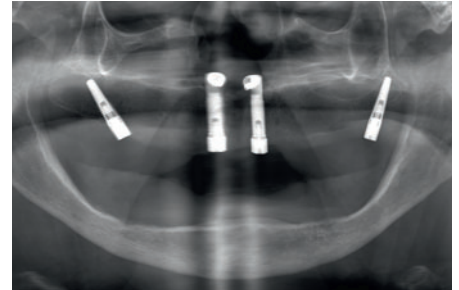
Elderly lady with a nasal carcinoma and a problematic upper full denture



Elderly patient with a squamous-cell carcinoma of the nose and problematic dentures. A problematic medical history excluded the possibility of extensive surgery.



The custom-made 'bifunctional implant': a Brånemark System RP connection for the dental part, and a forward-facing NP platform for the nasal extension.



Maxillary reconstruction on four implants. Replace Select Tapered implants provide posterior support for a simple resin prosthesis.



The nasal extension provides anchorage for a nasal prosthesis.



The familiar oral part of the fixture allows for straightforward oral reconstruction.



Simultaneous ablative surgery and oral and nasal reconstruction – truly a one-stage surgery.

# Custom-made devices for unique clinical situations.

Custom-made devices are available for both surgical and prosthetic components to treat a unique clinical situation for a named patient. Examples are:

- Highly specialized components for maxillofacial treatments.
- Abutments and other prosthetic and surgical components with special lengths and/or angulations for implants that are placed very deep or that are very tilted.
- Short abutment screws in case the original prosthetic screw is broken and cannot be removed from the implant.

## Abutment components\*

Custom-made Straight Abutment with Screw



Custom-made Abutment without Screw



Custom-made Overdenture Attachment Abutment



Custom-made Angled Abutment with Screw



Custom-made Titanium Cylinder with Screw



Custom-made Gold Screw



Custom-made Titanium Screw



## Restorative auxiliary\*

Custom-made Impression Coping



Custom-made Replica



## Surgical components\*

Custom-made Drill



Custom-made Implant



Custom-made Healing Abutment



## Tooling components\*

Custom-made Screwdriver Manual



Custom-made Screwdriver Machine



## Miscellaneous\*

Custom-made Miscellaneous



Custom-made Maxillofacial Components



\*The illustrations show custom-made devices previously produced for named patients.

Custom-made devices are generally provided to customers in EU, US, Canada and Australia. If in exceptional cases service for a customer in another country is envisaged the customer needs to contact the local Nobel Biocare office for a legislative feasibility check. This offer is in compliance with local legislation for EU, US, Canada and Australia. Custom-made devices in Canada need to be approved by Health Canada based on a submission by the treating clinician.