

On1™ concept

PRESERVING
soft tissue
attachment

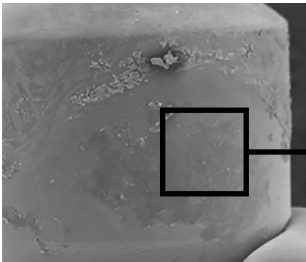
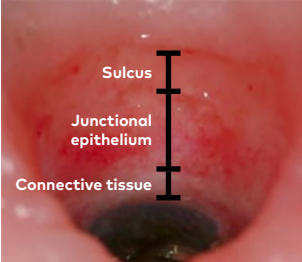
WE FOLLOW NO
ONE.

The On1™ concept **preserves** **connective tissue structure** while offering full restorative and surgical flexibility. The concept **simplifies the** **restorative procedure** by moving the platform from bone level to tissue level.

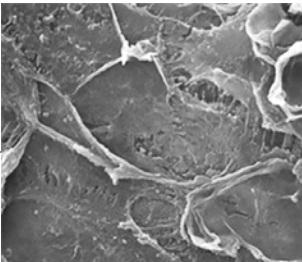


Leave the immediate soft tissue attachment intact

The On1 Base is seated at the time of implant placement. The connective tissue structure is left intact as the On1 Base remains in situ during the entire restorative workflow and throughout the lifetime of the restoration. Leaving the base in situ is in favor of marginal bone preservation and soft tissue health.



Removed healing abutment



Cells adhering to abutment surface



NobelActive®
TiUltra™



NobelParallel™
CC TiUltra™



NobelReplace®
CC TiUltra™

Maintain surgical flexibility

The On1 concept can be used with any Nobel Biocare conical connection implant system, each designed for high primary stability and built-in platform shifting.

On1 Base featuring Xeal: the pioneering Mucointegration™ surface



Xeal is a pioneering surface for soft tissue integration. It is a smooth non-porous, nanostructured and anodized surface and possesses surface chemistry and topography that are specially designed to promote soft tissue attachment.

[Explore Xeal on our website](#)

"With On1 you get the best of both worlds – a bone-level implant with built-in platform shifting and restoring at tissue level without disturbing the mucosal seal."

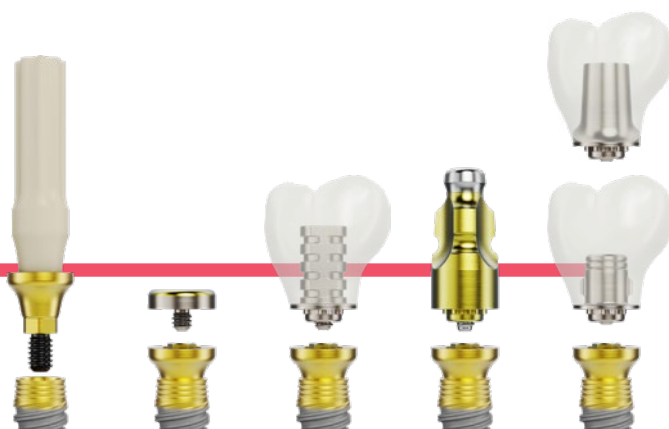
**Dr. Bernard Touati
France**

Choose your preferred workflow

The On1 concept provides you with the option to follow the conventional impression taking or the intraoral scanning workflow using the special On1 IOS (Intraoral Scannable) Healing Cap. For easier handling, key components are delivered with a pre-mounted holder.

Conventional workflow

Following the conventional workflow, the On1 Base stays in position while the healing cap, temporary restoration, impression coping and final restoration are placed.



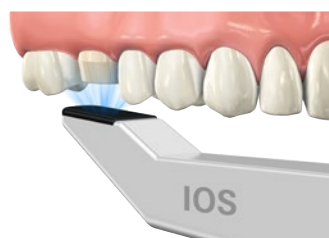
Intraoral scan workflow

Following the intraoral scan workflow, only the IOS Healing Cap is used before the final restoration is placed.



Increase workflow efficiency with intraoral scanning

Save substantial chair time with the unique On1 IOS Healing Cap, which supports an intraoral scan workflow. This eliminates conventional restorative procedures, including impression taking, while also serving as an anatomically shaped healing abutment for optimized soft tissue contouring.



Order online

Order our complete range of implants and prefabricated prosthetics 24 hours a day through the Nobel Biocare online store.

nobelbiocare.com/store

Order by phone

Call our customer service team or contact your sales representative.

nobelbiocare.com/contact

Lifetime warranty

The warranty covers all Nobel Biocare implants including prefabricated prosthetic components.

nobelbiocare.com/warranty



nobelbiocare.com/on1

