

4

reasons
to start
with the All-on-4®
TREATMENT
concept



**WE FOLLOW NO
ONE.**

All-on-4[®] treatment concept

The original graftless
full-arch solution
on four implants



1

Teeth in a day^{*1, 2, 3}

Immediate Function for patients meeting criteria for immediate loading of implants.

2

One surgery

Graftless procedure for shorter treatment time and reduced costs, compared to conventional full-arch treatments.⁴

3

High survival rates

High survival rates with up to 18 years' follow-up in the mandible and 13 years in the maxilla.^{5, 6, 7}

4

Grow your practice

The All-on-4[®] treatment concept offers your patients immediate improvement in eating, chewing comfort, esthetics and speech. 95% of patients are satisfied with their new teeth.⁸

* If patient criteria are met and adequate stability achieved – all our implants can be loaded with a fixed provisional restoration on the day of surgery.

Quick facts

Many have tried to mirror this ground-breaking concept, but only Nobel Biocare has the scientifically documented success to back it up.

Just 4

implants for high primary stability

98%

mean implant survival^{9,*}

*based on 44 studies

+250,000

of patients treated⁹

18

years of documented clinical success^{5,9}

up to **12**
years of mean follow-up^{5,9}

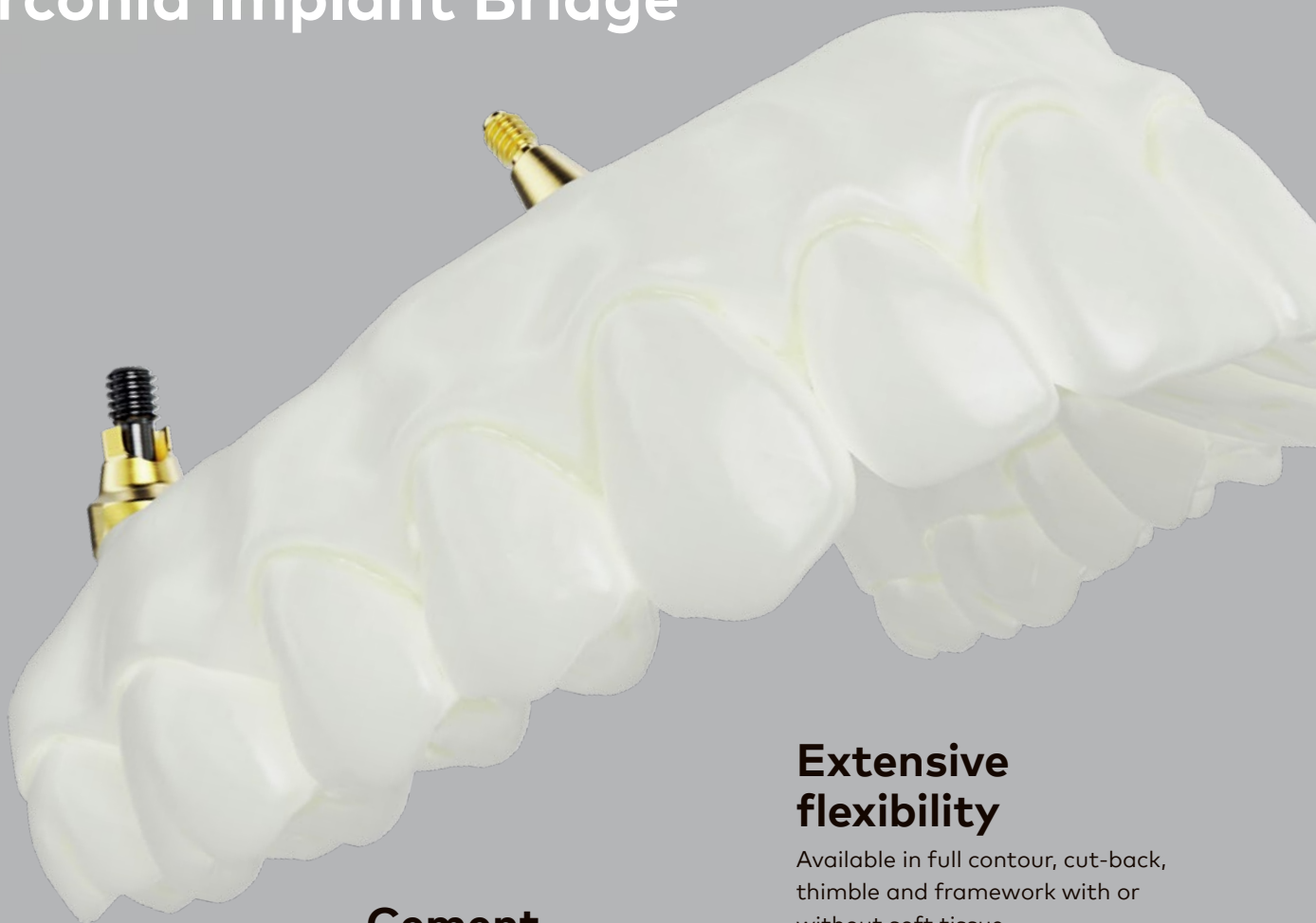
From our experts

"The high implant and prosthetic survival rates of the All-on-4® treatment concept make it a safe and predictable surgical protocol from both the clinician's and the patient's point of view. Clinicians should adopt this treatment concept in their daily practice to avoid demanding and time-consuming additional surgeries." - Ana Ferro



For the most demanding esthetics

The All-on-4[®] treatment concept is now available with the new NobelProcera[®] Zirconia Implant Bridge



Made for esthetics

Achieve natural looking restorations with our new DOCERAM Nacera[®]

Pearl zirconia material, available in 10 VITA shades.

Use angulated screw channel to improve buccal access.*

*only available for conical connection implant level and Multi-unit Abutment restorations

Cement free

Smaller angulated screw channel with new Omnigrip Mini Screwdriver provides improved occlusal esthetics.*

Reduce complexity and save time by eliminating the bonding procedure.

*25% smaller screw channel diameter area compared to angulated screw channel for conical connection

Extensive flexibility

Available in full contour, cut-back, thimble and framework with or without soft tissue.

NobelProcera guarantees a 100% inspection to ensure a passive fit against your digital design.

Learn from the pioneers

To develop the knowledge and skills needed to achieve the best possible results with the All-on-4[®] treatment concept, you need to learn from the best. Nobel Biocare offers a range of dedicated courses covering everything from the fundamentals, to advanced procedures. Courses are held by renowned clinicians at locations all over the world.

Sign up today:

nobelbiocare.com/education

Start your online training now

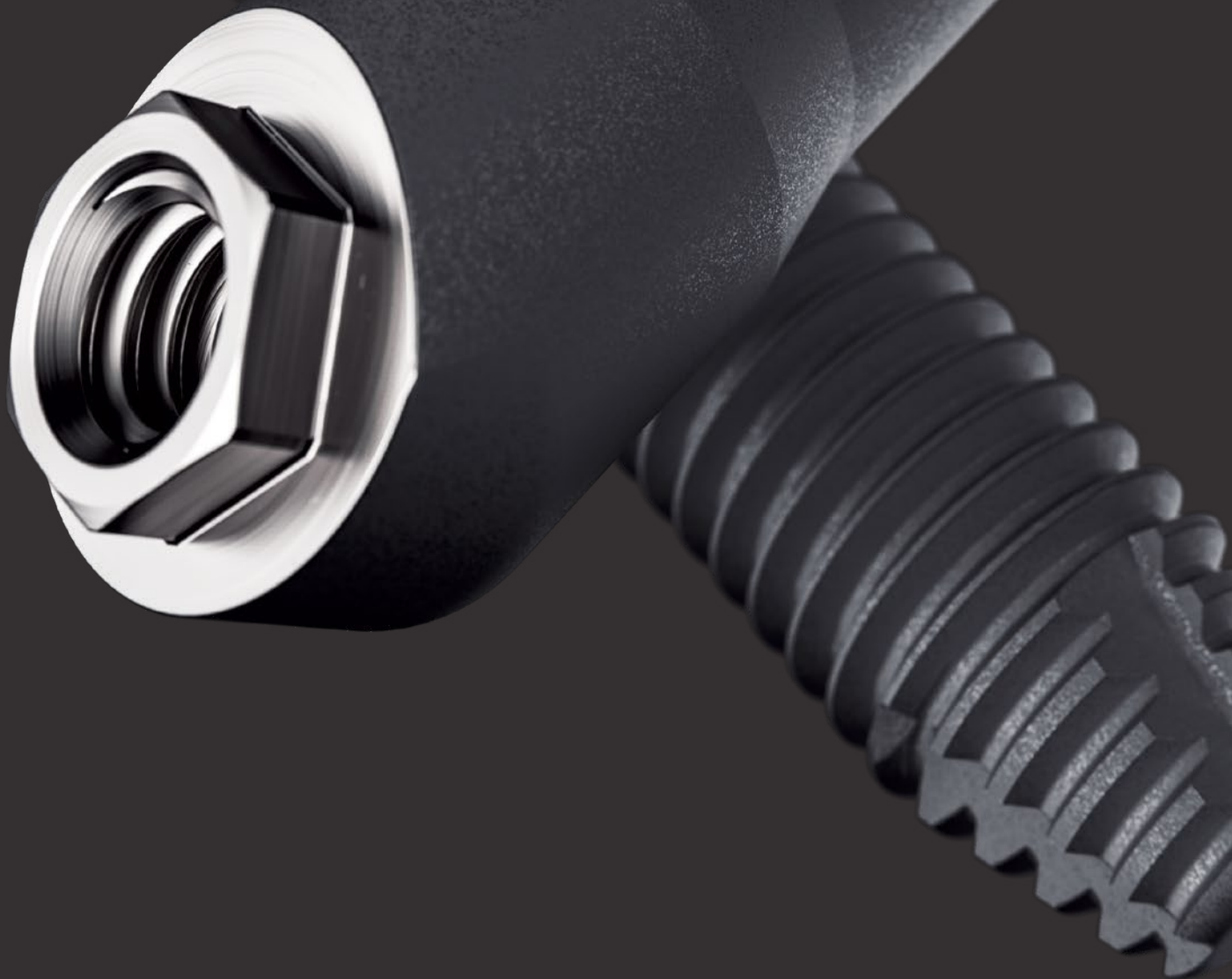
nobelbiocare.com/courses

Download your free e-book

info.nobelbiocare.com/int/en/all-on-4-ebook

Take it to the next level with NobelPro Line™

Master the extreme with our outstanding, most comprehensive treatment range and training. Treat the most challenging cases. Transform more patients' lives.



ORDER ONLINE

Order the complete range 24 hours a day through the Nobel Biocare online store.

nobelbiocare.com/store

ORDER BY PHONE

Call our customer service team, or contact your sales representative.

LIFETIME WARRANTY

On all Nobel Biocare implants including prefabricated prosthetic components. For further information visit:

nobelbiocare.com/warranty

References:

1. Weinstein R, Agliardi E, Fabbro MD, et al. Immediate rehabilitation of the extremely atrophic mandible with fixed full-prosthesis supported by four implants. *Clin Implant Dent Relat Res* 2012;14(3):434-441.
2. Agliardi E, Clericò M, Ciancio P, Massironi D. Immediate loading of full-arch fixed prostheses supported by axial and tilted implants for the treatment of edentulous atrophic mandibles. *Quintessence Int* 2010;41(4):285-293.
3. Babbush CA. Posttreatment quantification of patient experiences with full-arch implant treatment using a modification of the OHIP-14 questionnaire. *J Oral Implantol* 2012;38(3):251-260.
4. Patzelt SB, Bahat O, Reynolds MA, Strub JR. The All-on-Four treatment concept: a systematic review. *Clin Implant Dent Relat Res* 2014;16(6):836-855.
5. Maló P, de Araújo Nobre M, Lopes A, et al. The All-on-4 treatment concept for the rehabilitation of the completely edentulous mandible: A longitudinal study with 10 to 18 years of follow-up. *Clin Implant Dent Relat Res* 2019; doi: 10.1111/cid.127692019.
6. Malo P, de Araujo Nobre M, Lopez A, Ferro A, Nunes M. The All-on-4 concept for full-arch rehabilitation of the edentulous maxillae: A longitudinal study with 5-13 years of follow-up. 2019;21(4): 538-549.
7. Malo P, de Araujo Nobre M, Lopes A, Francischone C, Rigolizzo M. "All-on-4" Immediate-Function Concept for Completely Edentulous Maxillae: A Clinical Report on the Medium (3 Years) and Long-Term (5 Years) Outcomes. *Clin Implant Dent Relat Res* 2012;14 Suppl 1:e139-50.
8. Babbush CA, Kanawati A, Kotsakis GA, Hinrichs JE. Patient-related and financial outcomes analysis of conventional full-arch rehabilitation versus the All-on-4 concept: a cohort study. *Implant Dent* 2014;23(2):218-224.
9. Nobel Biocare. Data on File.



nobelbiocare.com

