

**Immediate implant
placement and
immediate loading
with NobelActive®
TiUltra™ implant
and On1™ Base
Xeal™**

Giacomo Fabbri
Italy





Giacomo Fabbri

Patient

51-year-old female, smoker.
The patient is in good health condition. Smokes eight cigarettes per day.

Clinical situation

The clinical intraoral situation is adequate except for 25, which is non-vital, fractured, presents caries, has endodontic lesion and the tooth position is not optimal for correct restoration. The tooth is severely compromised biomechanically.

Surgical solution

Extraction of tooth 25 with immediate implant placement and immediate loading.

Restorative solution

Procera Monolithic Zi Crown cemented extraorally on the Universal Abutment (0.3 mm). The final restoration will be screw-retained.

Surgery date

April 9, 2019

Total treatment time

2 months

Tooth position

25



Initial clinical
situation

Surgical
procedure

Restorative
procedure

Intraoral clinical situation



X-ray shows the residual root



Pre-operative clinical view shows good soft tissue quality and quantity



The occlusal view demonstrates the loss of structure of the clinical crown

Initial clinical situation

Surgical procedure

Restorative procedure



Tooth 25 was extracted while maintaining the integrity of the bone walls



NobelActive® TiUltra™ RP 4.3x13mm was placed immediately with flapless approach. The primary stability of 56 Ncm was achieved. Implant was placed slightly palatally. The buccal gap was filled with creos™ xenogain.



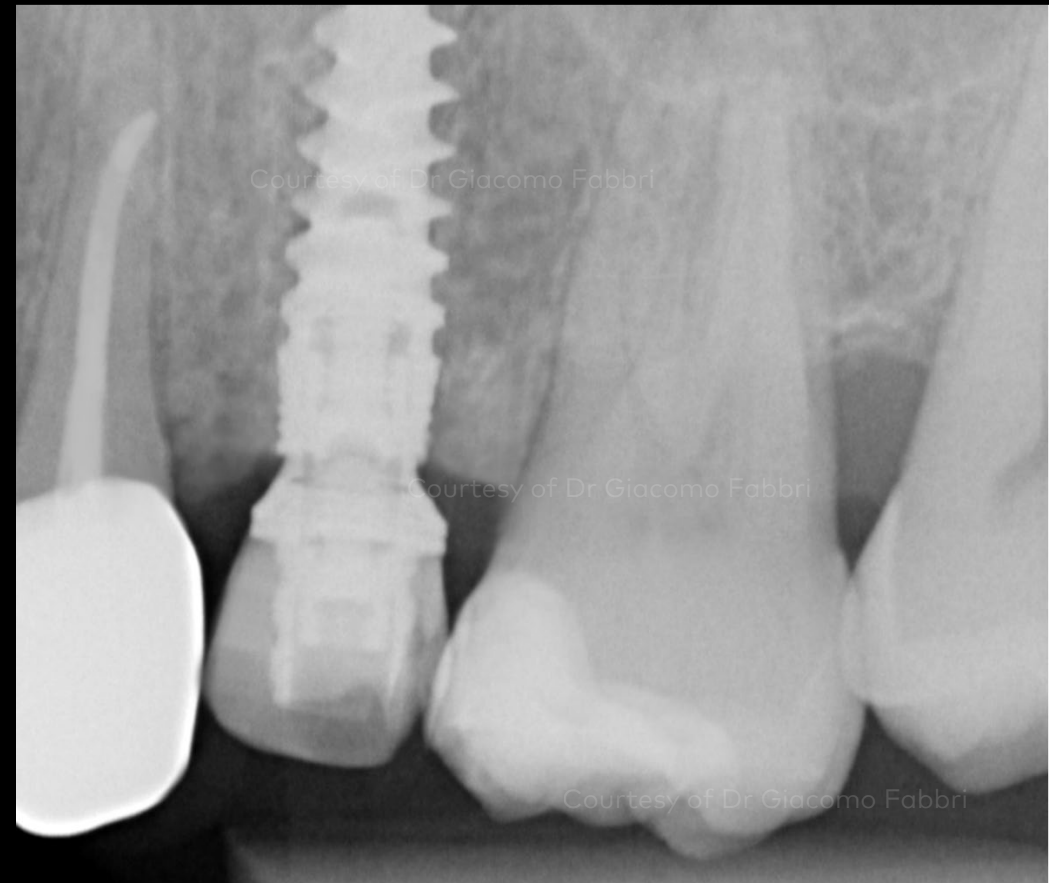
On1™ Base Xeal RP 1.75 mm was placed immediately on the day of the surgery and torqued to 35 Ncm

Initial clinical situation

Surgical procedure

Restorative procedure

10-week follow-up after the surgery: Clinical and radiographic evaluation shows excellent bone and soft tissue integration



Initial clinical
situation

Surgical
procedure

Restorative
procedure

Impression taking



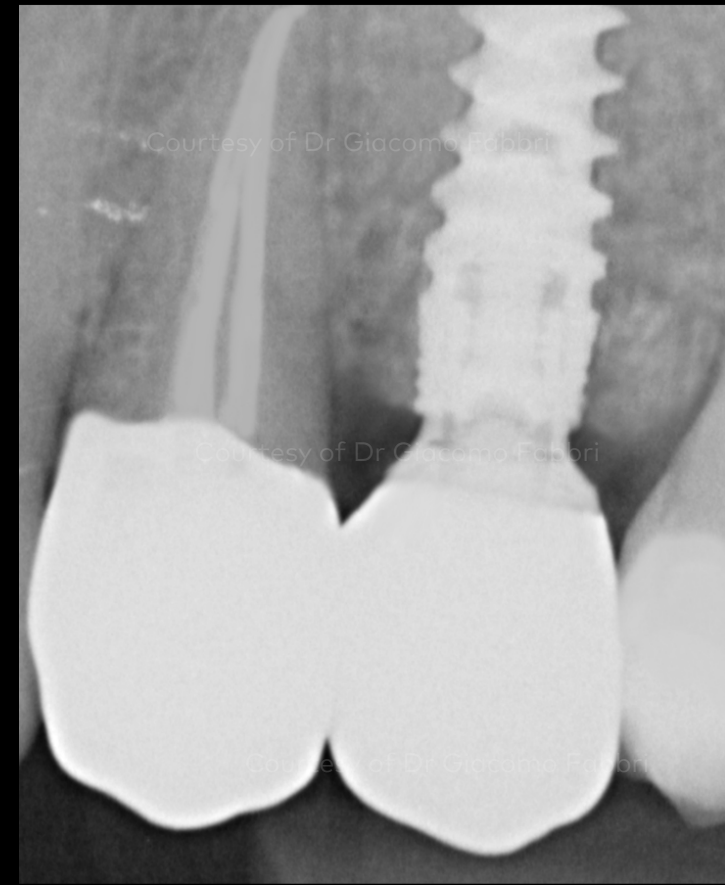
Working on a new coronal prosthetic platform avoids compromising soft tissue healing and stability. This photo shows the excellent soft tissue quality achieved 10 weeks after the surgery.

Initial clinical
situation

Surgical
procedure

Restorative
procedure

Final restoration: Procera Monolithic Zirconia Crown cemented on the Universal Abutment (0.3 mm)



Excellent esthetics of the final restorative outcome. A healthy and natural appearance of soft tissue morphology was obtained around the restoration.

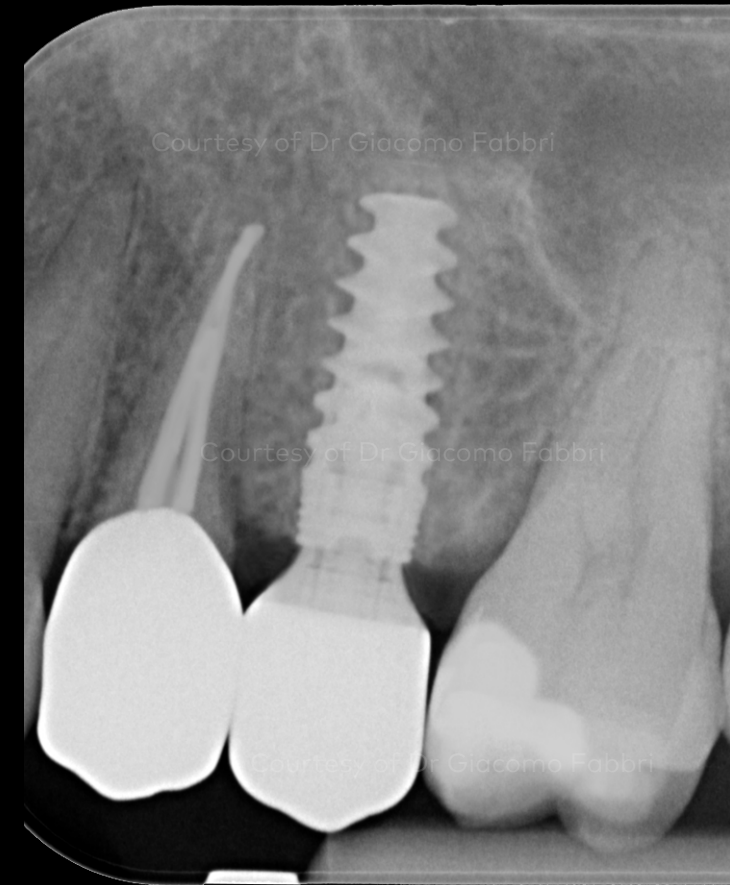
X-ray demonstrates the excellent bone stability

Initial clinical situation

Surgical procedure

Restorative procedure

1-year follow-up: Restoration is fully integrated, and a significant improvement in soft tissue integration and esthetics was achieved.



Intraoral photograph shows the soft tissue gain obtained in the interproximal area

X-ray confirms the successful osseointegration and marginal bone stability after 1 year of function

Case courtesy of Giacomo Fabbri



GMT77833 © Nobel Biocare Services AG, 2022. All rights reserved. creos™ xenogain is distributed by: Nobel Biocare. Legal manufacturer: Nibec Co., Ltd. Iwol electricity-electronic Agro-industrial Complex, 116 Bamdi-gil, Iwol-myeon, Jincheon-gun, Chungcheongbuk-do, 27816 Korea. KaVo is either registered trademark or trademark of Kaltenbach & Voigt GmbH. DTX Studio, Nobel Biocare, the Nobel Biocare logotype and all other trademarks are, if nothing else is stated or is evident from the context in a certain case, trademarks of Nobel Biocare. Please refer to nobelbiocare.com/trademarks for more information. Other trademarks are either registered trademarks or trademarks of their respective owners. Product images are not necessarily to scale. Disclaimer: Some products may not be regulatory cleared/released for sale in all markets. Please contact the local Nobel Biocare sales office for current product assortment and availability. For prescription use only. All product images are for illustration purposes only and may not be an exact representation of the product. Caution: Federal (United States) law or the law in your jurisdiction restricts this device to sale by or on the order of a dentist or a physician. See Instructions For Use for full prescribing information, including indications, contraindications, warnings and precautions. Nobel Biocare does not take any liability for any injury or damage to any person or property arising from the use of this clinical case. This clinical case is not intended to recommend any measures, techniques, procedures or products, or give advice, and is not a substitute for medical training or your own clinical judgement as a healthcare professional. Viewers should never disregard professional medical advice or delay seeking medical treatment because of something they have seen in this clinical case. Full procedure is not shown. Certain sequences have been cut.