

Digital binder



# New graduate RESOURCES



Begin



# Directory

Contents of your new graduate resources digital binder (tap to navigate).

> Customer service, technical helpdesk, and warranty program

> Products and solutions

> Resources library

Training and education

> Live courses

> Online learning

> Online store

> Partner Program

> Practice growth

> Digital treatment workflow

> Website and social media



[Back to directory](#)



# Customer service and technical helpdesk

For your personal support regarding products, ordering and technical questions, our customer service and technical support teams are ready to help.

## Customer service



Our team of experienced customer service professionals can assist you with your orders, product availability, order shipping, returns and exchanges.

### Contact information

Phone **1 800 322 5001** (toll free)

Hours 5:00 a.m. – 5:00 p.m. (PT) Monday – Friday

You may also email us and request a callback at

**[us.customerservice@nobelbiocare.com](mailto:us.customerservice@nobelbiocare.com)**

Expect to hear back from us within 24 to 48 hours.

### Other helpful links

[Warranty program terms and conditions](#)

[Online product and complaint form](#)

## Technical support



Our team of highly skilled technical support professionals are available to go over any Nobel Biocare product, process or protocol, in order to troubleshoot or maximize utilization.

### Contact information

Phone **1 888 725 7100** (toll free)

Hours 6:00 a.m. – 5:00 p.m. (PT) Monday – Friday

Option **1**: Surgical or restorative assistance

Option **2**: 3Shape® assistance

Option **3**: exocad™ assistance

Option **4**: NobelProcera® Services assistance

Option **5**: DTX Studio™ Implant assistance

Option **6**: DTX Studio™ Lab assistance

Option **7**: DTX Studio™ Clinic assistance

Option **8**: Intraoral scanner assistance

[Back to directory](#)



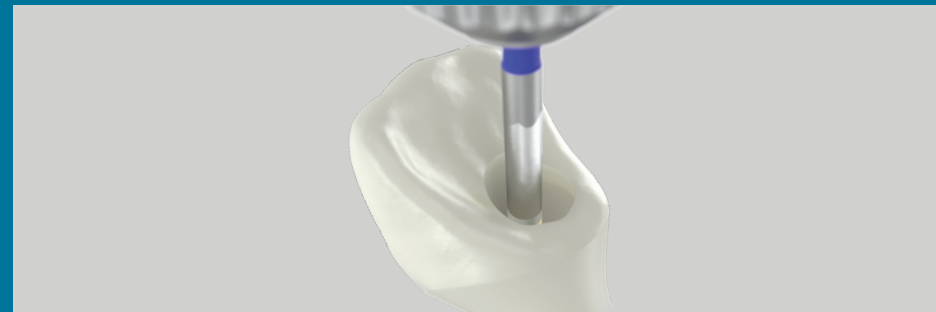
# Products and solutions

Give your patients fully functional and natural-looking tooth restorations that aspire to last a lifetime.



## Implant systems for all indications

Whatever the indication, we have the dental implant to meet your needs. Our assortment includes bone and tissue level implants for all bone types and protocols. [Learn more >](#)



## Innovative treatment concepts

Treat more patients better with our reliable solutions – from single missing teeth to the All-on-4® treatment concept. [Learn more >](#)



## Prefabricated and individualized prosthetics

We offer highly reliable restorations for all indications. Receive customized prosthetics with CAD/CAM restorations from NobelProcera. [Learn more >](#)



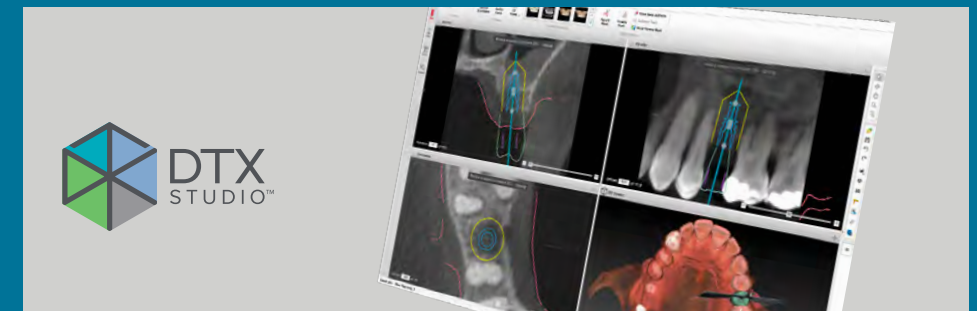
## Regenerative solutions

The Nobel Biocare regenerative product portfolio offers you safe and reliable solutions for guided bone regeneration (GBR) and guided tissue regeneration (GTR) procedures. [Learn more >](#)



## Implant drilling units and handpieces

Explore our entire portfolio of drilling units and handpieces. [Learn more >](#)



## DTX Studio™ suite for digital workflows

Connect treatments from beginning to end with a single digital platform that empowers you and your team. [Learn more >](#)

# Resources library



At Nobel Biocare our aim is to help you treat more patients better. That's why we're sharing our resources and expertise to give you the information you need to use our products with confidence.

## Online materials



Clinical cases

Instructions for use

Scientific evidence

Sterilization guidelines

[Back to directory](#)



# Training and education – live courses

Lifelong professional growth starts with getting the training and skills you need in order to treat patients with excellence.

## Nobel Biocare dental implantology training



We tailor our training to your experience level so that you can either get started with the fundamentals or further develop your skills into the advanced. We offer competency-based learning for the entire dental team.

[Explore course offering](#)

### Contact information

800 579 6515

northamericaeducation@nobelbiocare.com



### Course topics include:

- Single and multiple-unit implant placement
- Prosthetic rehabilitation
- Hard- and soft-tissue management
- Full-arch rehabilitation
- Digital dentistry workflow
- Zygomatic implant placement
- Dental practice development
- Dental team training
- Dental lab technician training



IMPLANTEDUCATION  
COMPANY

### Implant Education Company

A live surgical training company that focuses on dental implants and oral surgery. Courses available for all skill levels.

[Learn more >](#)

[Back to directory](#)





# Training and education – online learning

Your professional growth should never stop. We offer exclusive opportunities for learning – at your fingertips, anytime, anywhere.

## Webinars

**[nobelbiocare.com/webinars](https://nobelbiocare.com/webinars)**

Free live and on-demand educational webinars from leading experts in implant dentistry.

**Learn more >**

## Blog

**[nobelbiocare.com/blog](https://nobelbiocare.com/blog)**

Subscribe to our blog for online articles regarding news, products and solutions, tips and techniques, science, education, events, and practice development. **Learn more >**



**[youtube.com/@nobelbiocare](https://youtube.com/@nobelbiocare)**

Nobel Biocare's YouTube channel has over 100 videos on-demand with topics on our products and solutions, clinical cases, event highlights, and patient cases. **Learn more >**



**[FOR.org](https://FOR.org)**

Unlimited free access to content created and reviewed by leading experts in dentistry. Includes video lectures, e-books, checklists, patient cases, and guidelines. **Learn more >**



[Back to directory](#)



# Shop online: [store.nobelbiocare.com](https://store.nobelbiocare.com)

All products are available for quick ordering and delivery in our online store 24 hours a day, 7 days a week. It's fast, free, and secure.

## Online store



As a Nobel Biocare customer, you can use the online store to:

- Place orders 24/7
- Check order status
- Build and share a custom catalog
- Track shipments
- Pay invoices online
- Register and pay for training
- Make purchases on mobile devices

Register

Shop online

[Back to directory](#)



# Partner Program

It's our way of saying Thank You for your loyalty to Nobel Biocare and dedication to excellence in implant dentistry.



## Partner benefits



We are delighted to offer loyalty points to our customers on the purchase of Nobel Biocare products. Partner Points can be redeemed for a variety of Nobel Biocare clinical and lab products. Additionally, as a Partner, you get access to:

- Special offers and discounts
- A wealth of educational materials
- Sneak peeks to new innovations

[See all Partner benefits](#)

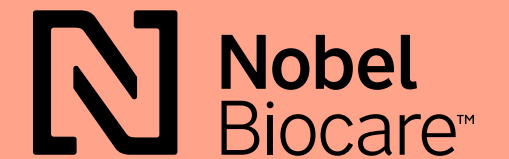
For more information, contact  
Partner support at **1 800 575 9191**

[Back to directory](#)





# Practice growth



Nobel Biocare provides resources to help empower you with confidence and trust at every level. We want to help your practice thrive – to help you change more lives.



## Patient Communications Toolbox

Nobel Biocare has graphics, media, website content, and product illustrations available to assist with your patient-facing marketing and communications efforts. [Learn more >](#)



## WEO Media

A national dental marketing agency providing a full suite of marketing services including custom responsive websites, social media, SEO, PPC, and much more. [Learn more >](#)



## ePracticeManager

Online front-office management and training tool designed to improve day-to-day operations, gain efficiency improvements, and increase profitability. [Learn more >](#)



## LeadingReach

A web-based referral management tool offering a HIPAA-secure platform designed to optimize workflow. [Learn more >](#)



## Practice Resource Center

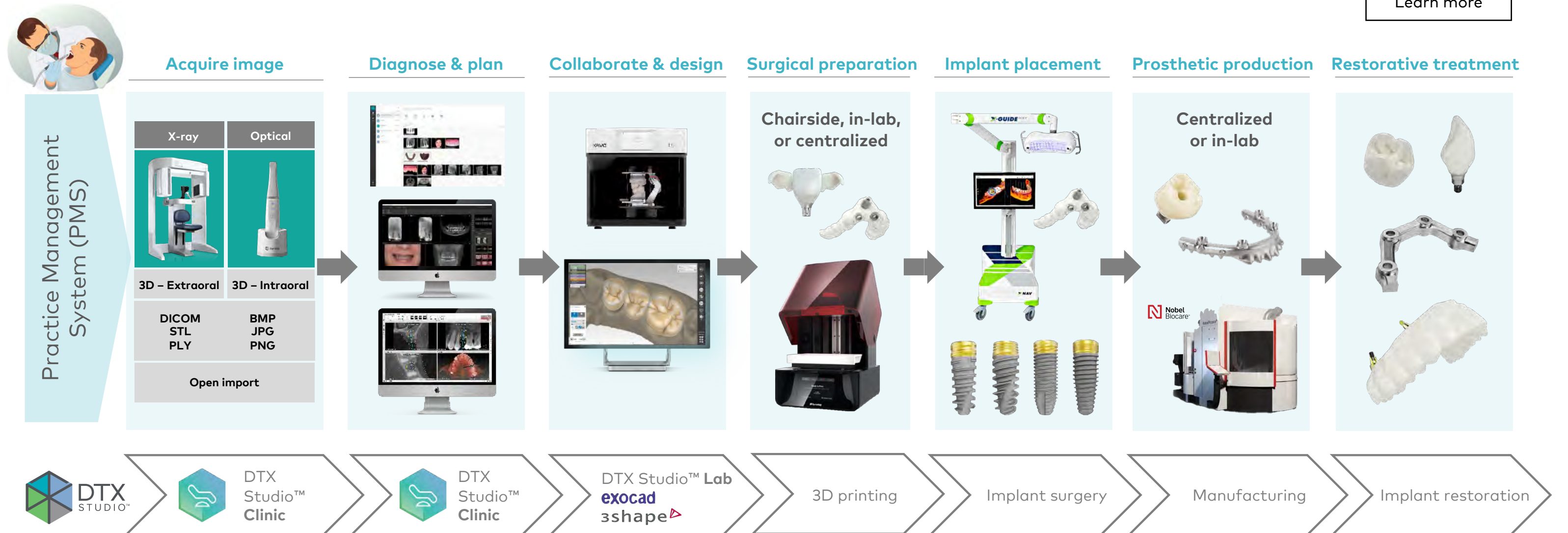
A selection of tools and activities designed to help you build your reputation so you can treat more patients. Our resources can help you gain exposure in your local area. [Learn more >](#)



# Digital treatment workflow



Connect treatments from beginning to end with DTX Studio™ suite, the single software solution that provides dental professionals with a comprehensive view of the patient.

[Learn more](#)

[Back to directory](#)





# Get social

Engage with us on social media. Stay in touch to learn more about our latest products, educational courses, and special events.

## Connect with us



Nobel Biocare new graduate hub



LinkedIn



Instagram



Facebook

[Back to directory](#)



# Need to get in touch with your local rep?

Contact customer support at  
**800 322 5001**



**Pioneering  
the past.  
Leading  
the future.**

Learn more:  
[nobelbiocare.com/our-purpose](https://nobelbiocare.com/our-purpose)



MKT-5686 Rev 01 (09/24, GMT 92674) © Nobel Biocare USA, LLC, 2024. All rights reserved. Disclaimer: Nobel Biocare, the Nobel Biocare logotype and all other trademarks are, if nothing else is stated or is evident from the context in a certain case, trademarks of Nobel Biocare. Please refer to [nobelbiocare.com/trademarks](https://nobelbiocare.com/trademarks) for more information. Product images are not necessarily to scale. All product images are for illustration purposes only and may not be an exact representation of the product. Some products may not be regulatory cleared/released for sale in all markets. Please contact the local Nobel Biocare sales office for current product assortment and availability. Caution: Federal (United States) law or the law in your jurisdiction may restrict this device to sale by or on the order of a dentist or a physician. See Instructions For Use for full prescribing information, including indications, contraindications, warnings and precautions.

[Back to directory](#)