

# All-on-4® digital workflow

Scan, plan, place, and provisionalize your All-on-4® treatment concept cases in just half a day with X-Guide® NXT 3D navigated surgery and FastMap® photogrammetry.

## High accuracy

Allows direct visualization of the surgical site at all times

## High flexibility

The benefits of guided surgery without the need for surgical templates

## Same-day teeth

Provisionalize All-on-4® treatment concept cases in just half a day

375,000+

implants placed navigated

## New X-Guide NXT

The most powerful X-Guide yet, for precise navigation during dental implant surgeries, from single units to full-arch restorations. X-Guide NXT will empower you to amplify your implant surgery skills and optimize surgical results.



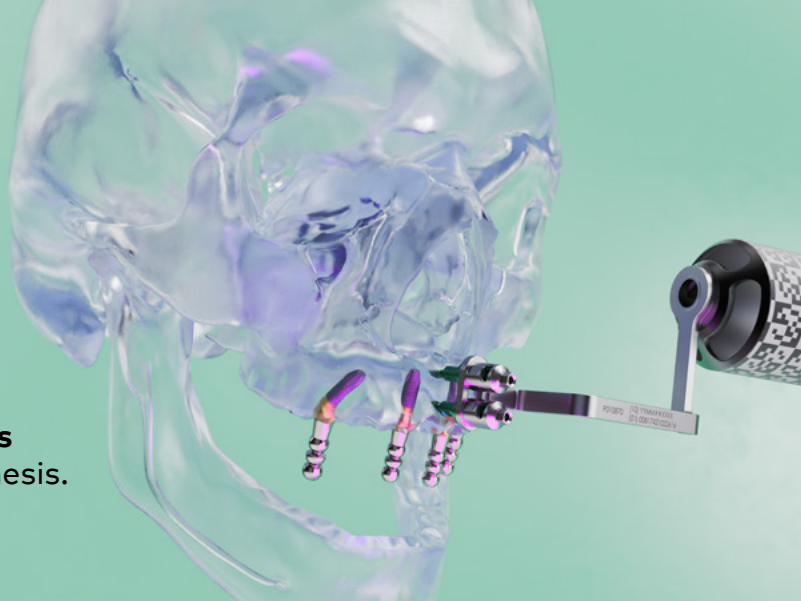
"FastMap is bringing immediate loading into the future. It's the most advanced digital protocol for taking intra surgery impression of final abutment positions."

Prof. Alessandro Pozzi, Italy

**X-GUIDE**  
center of excellence

## Navigate beyond surgery with FastMap photogrammetry

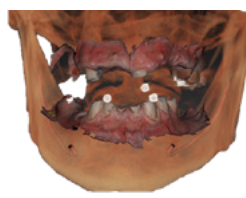
- A single device for both implant placement and photogrammetry.
- Achieve a conversion-less, passive-fit provisional directly onto abutments.
- Meets the NobelProcera® high standards for a predictable passive-fit final prosthesis.



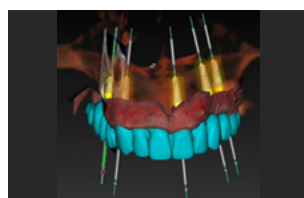
## Same-day full-arch restoration using X-Guide® navigated surgery and FastMap® photogrammetry



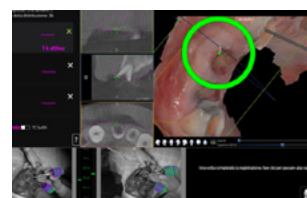
**Initial situation**



**Data collection**  
Merged DICOM and PLY



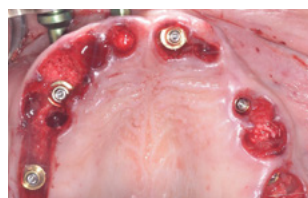
**Treatment planning**  
Prosthetically driven approach



**Surgical procedure**  
X-Mark® protocol calibration



**Surgical procedure**  
Implant placement



**Surgical procedure**  
Multi-unit Abutment placement



**Post-surgical scan**  
Digital impression with FastMap® scan bodies



**Immediate temporization**  
Same-day 3D-printed temporary

Case courtesy of  
Dr. Alberto Pitino



**Learn more**



**Contact us**

89448 GB 2410 Printed in the EU © Nobel Biocare Services AG, 2024. All rights reserved. Distributed by: Nobel Biocare, the Nobel Biocare logotype and all other trademarks are, if nothing else is stated or is evident from the context in a certain case, trademarks of Nobel Biocare. Please refer to Trademarks | Nobel Biocare for more information. Product images are not necessarily to scale. All product images are for illustration purposes only and may not be an exact representation of the product. Some products may not be regulatory cleared/released for sale in all markets. Please contact the local Nobel Biocare sales office for current product assortment and availability. Caution: Federal (United States) law or the law in your jurisdiction may restrict this device to sale by or on the order of a licensed clinician, medical professional or physician. See Instructions For Use for full prescribing information, including indications, contraindications, warnings and precautions. X-Guide® and FastMap® are registered trademark or trademark of X-Nav Technologies. X-Guide® is manufactured by X-Nav Technologies, LLC 1555 Bustard Road Suite 75, Lansdale PA 19446, USA and distributed by Nobel Biocare.

**Nobel Biocare™**