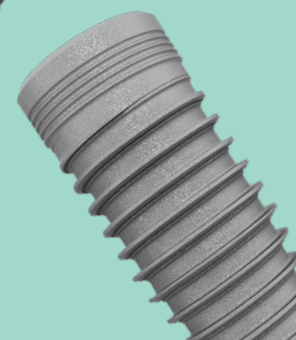


Five years of esthetic excellence with NobelReplace® CC and NobelProcera® in the anterior maxilla



Clinical relevance

Long-term bone stability

Stable marginal bone levels from initial remodeling to 5-year follow-up.

Healthy soft tissue

Soft tissue health improved significantly from surgery to prosthetic delivery and remained stable throughout.

High patient satisfaction with function and esthetics

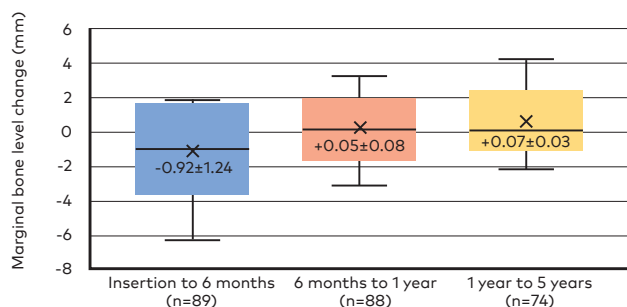
Continuous improvement in oral health-related quality of life.



Immediately provisionalized tapered conical connection implants for single-tooth restorations in the maxillary esthetic zone: a 5-year prospective single-cohort multicenter analysis. **Baer RA, Nölken R, Colic S, Heydecke G, Mirzakhania C, Behneke A, Behneke N, Gottesman E, Ottria L, Pozzi A, Fögl A, Zechner W.** *Clinical Oral Investigations*. 2022;26(4):3593-604.

The results

– Stable marginal bone levels, with a mean remodeling of -0.80 ± 1.13 mm from insertion to **5 years**.



– High implant survival rate at 5 years of **97.8%**.

– Full or more than half of the papilla height regenerated at 90.1% of the sites at 5 years.

– Minimal or no sulcus bleeding at 98.8% of sites and low plaque accumulation at 93.8% of sites at 5 years.

– High Pink Esthetic Score of >9.1 at 1 through 5-year follow-up visits.

– High patient satisfaction with function and esthetics, with the mean complaint rate (OHIP-14) of 0.84 on a scale of 0 to 14 at 5 years.

Study design

Prospective, single-cohort, multicenter



94 patients



Single-tooth
Anterior maxilla
Immediate
provisionalization



99 NobelReplace
CC

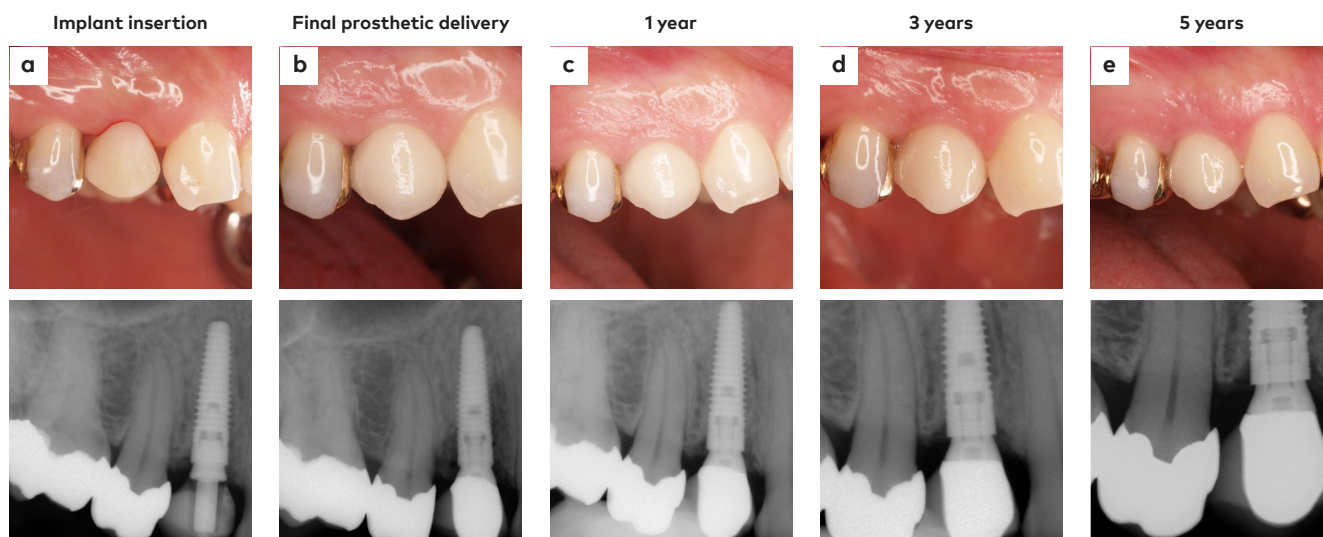


78 NobelProcera
single crowns
+ 18 others



5-year follow-up

Sample clinical case from the study



Images courtesy of Drs. Alexandra and Nicolaus Behneke, Germany

45-year-old female patient with no history of periodontitis received NobelReplace CC 3.5 x 13 mm in the first premolar site, FDI position 14 (a). Bone quality was hard (type 2), and the final insertion torque was 45 Ncm. The implant was immediately provisionalized. Clinical images and radiographs acquired at final prosthetic delivery, and 1-, 3- and 5-year follow-up (b-e) show healthy hard and soft tissue responses, accompanied by a visible improvement in esthetics.

Authors' conclusion

"The high survival and success rates of immediately provisionalized NobelReplace CC implants in the esthetic zone combined with the good peri-implant tissue health were reflected in continuous improvement in patient oral health-related quality of life."

More to explore



Read on PubMed



FOR. Interface
precision in conical
connection implants



nobelbiocare.com/nobelreplace

MKT-5386 Rev 00 (06/23, GMT 85557) © Nobel Biocare USA, LLC, 2023. All rights reserved. Nobel Biocare, the Nobel Biocare logotype and all other trademarks are, if nothing else is stated or is evident from the context in a certain case, trademarks of Nobel Biocare. Please refer to nobelbiocare.com/trademarks for more information. Product images are not necessarily to scale. All product images are for illustration purposes only and may not be an exact representation of the product. Disclaimer: Some products may not be regulatory cleared/released for sale in all markets. Please contact the local Nobel Biocare sales office for current product assortment and availability. See Instructions For Use for full prescribing information, including indications, contraindications, warnings and precautions.

