

All-on-4® digital workflow



FastMap® navigated photogrammetry

Scan, plan, place, and provisionalize your All-on-4® treatment concept cases in just half a day with X-Guide® NXT 3D navigated surgery and FastMap® photogrammetry.

High accuracy

Allows direct visualization of the surgical site at all times

High flexibility

The benefits of guided surgery without the need for surgical templates

Same-day teeth

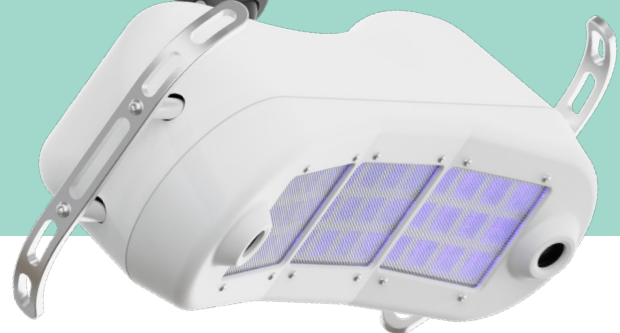
Provisionalize All-on-4® treatment concept cases in just half a day

375,000+

implants placed navigated

Experience navigated surgery and photogrammetry with the new X-Guide® NXT

The most powerful X-Guide® yet, for precise navigation during dental implant surgeries, from single units to full-arch restorations.



All-on-4® digital workflow in a nutshell



Data collection

- ① DICOM
- ② STL
- ③ Clinical pictures



Treatment planning

- ① Smile design
- ② Virtual wax-up
- ③ Implant planning



Surgical execution

- ① 3D navigation



Immediate provisional

- ① FastMap® photogrammetry
- ② Wax-up for printing
- ③ 3D printing
- ④ Immediate loading



Final records

- ① Digital records
- ② Optional FastMap® photogrammetry
- ③ Design prototype



Final restoration

- ① Deliver prototype
- ② Adjust and send to NobelProcera®
- ③ Deliver final



"FastMap® is bringing immediate loading into the future. It's the most advanced digital protocol for taking intra surgery impression of final abutment positions."

Prof. Alessandro Pozzi, Italy

Navigate beyond surgery with FastMap® photogrammetry

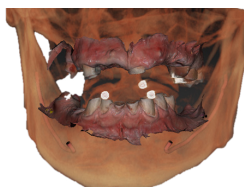
- **A single device** for both implant placement and photogrammetry.
- **Achieve a conversion-less, passive-fit** provisional directly onto abutments.
- **Meets the NobelProcera® high standards** for a predictable passive-fit final prosthesis.



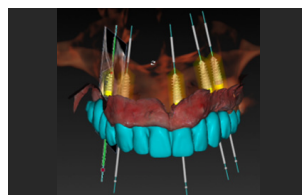
Same-day full-arch restoration using X-Guide® navigated surgery and FastMap® photogrammetry



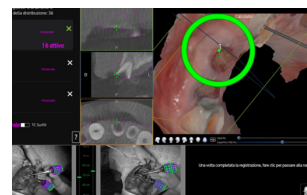
Initial situation



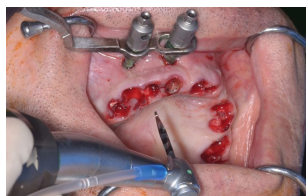
Data collection
Merged DICOM and PLX



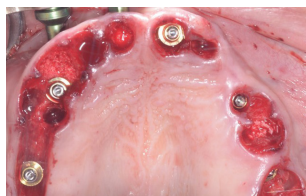
Treatment planning
Prosthetically driven approach



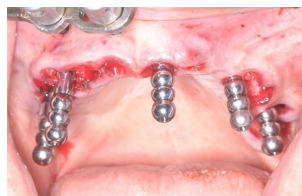
Surgical procedure
X-Mark™ protocol calibration



Surgical procedure
Implant placement



Surgical procedure
Multi-unit Abutment placement



Post-surgical scan
Digital impression with FastMap® scan bodies



Immediate temporization
Same-day 3D-printed temporary

Case courtesy of
Dr. Alberto Pitino



Learn more



Contact us

MKT-5839 Rev 00 (10/24 GMT 93218) © Nobel Biocare USA, LLC, 2024. All rights reserved. Distributed by: Nobel Biocare. Nobel Biocare, the Nobel Biocare logotype and all other trademarks are, if nothing else is stated or is evident from the context in a certain case, trademarks of Nobel Biocare. Please refer to nobelbiocare.com/trademarks for more information. Product images are not necessarily to scale. All product images are for illustration purposes only and may not be an exact representation of the product. Some products may not be regulatory cleared/released for sale in all markets. Please contact the local Nobel Biocare sales office for current product assortment and availability. Caution: Federal (United States) law or the law in your jurisdiction may restrict this device to sale by or on the order of a dentist or physician. See Instructions For Use for full prescribing information, including indications, contraindications, warnings, and precautions. X-Guide® and FastMap® are registered trademarks or trademarks of X-Nav Technologies. X-Guide® is manufactured by X-Nav Technologies, LLC, 1555 Bustard Road, Suite 75, Lansdale, PA 19446, USA, and distributed by Nobel Biocare.

