

# All-on-4<sup>®</sup> digital workflow



## 1 Proven All-on-4<sup>®</sup> treatment concept

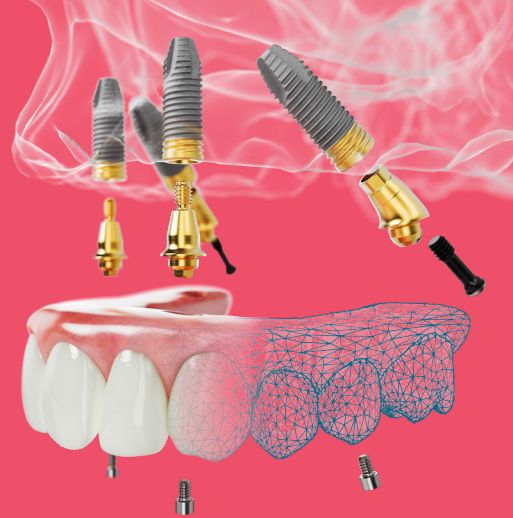
- Full-arch rehabilitation with only four implants.
- Provide your patients with provisional teeth in a day.

## 2 Shorten treatment time

- Fewer patient visits.
- Reduce overall treatment costs.

## 3 Unmatched final prosthetic solutions

- 100% cement-free NobelProcera<sup>®</sup> implant bridges.
- Backed by over 93 publications and a 10-year warranty.



### What is the All-on-4<sup>®</sup> treatment concept?

- **Patient-friendly solution:** Allows for full-arch restoration with only four Nobel Biocare implants.
- **Graftless and cost-effective solution:** Designed to be minimally invasive, and optimized for lowering overall treatment costs.

### Leverage All-on-4<sup>®</sup> digital workflow to save<sup>2</sup>:



### Why All-on-4<sup>®</sup> digital workflow?

Further improvements compared to conventional All-on-4<sup>®</sup> treatment concept:

- Increased predictability by using photogrammetry
- Increased efficiency<sup>1</sup>
- Improved patient experience<sup>2</sup>
- Increased flexibility

### More than 25 years' experience All-on-4<sup>®</sup> treatment concept



# 54

Clinical studies published



# 4,200+

Patients treated



# 22,500+

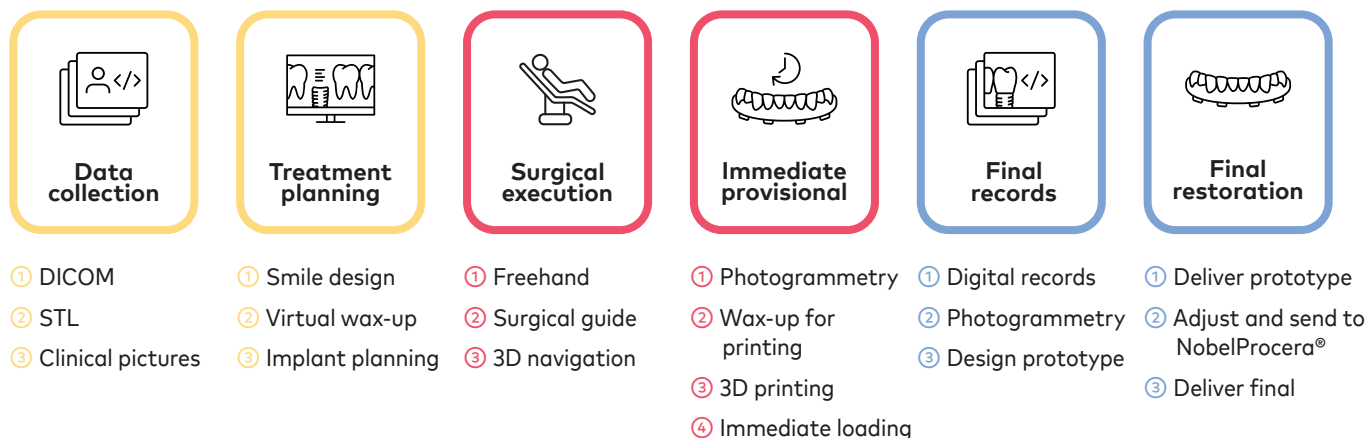
Nobel Biocare implants placed



**Designed to immediately place and load**

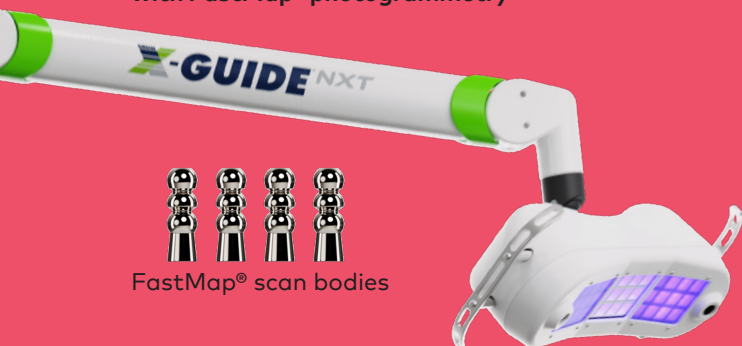
1. Based on limited market survey, reducing patient visits and chair time.  
2. On average compared to conventional All-on-4<sup>®</sup> treatment concept based on limited market survey.  
3. 97.6% mean survival rate with up to 17 years of clinical follow-up.

## All-on-4® digital workflow in a nutshell



## All-on-4® digital workflow Work smarter, not harder using photogrammetry\*

**X-Guide® surgical navigation with FastMap® photogrammetry**



**ICam standard photogrammetry device**



\* Time savings based on limited market survey. Some products may not be regulatory cleared, released, or licensed for sale in all markets.

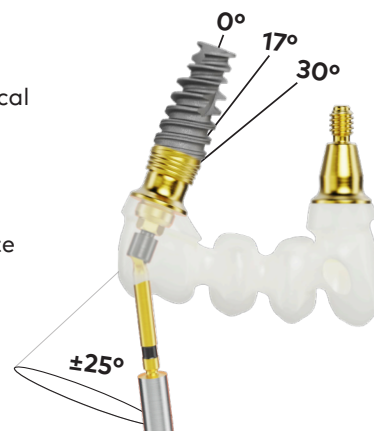
## Passive fitting screw-retained restorations

100% cement-free restoration

**Reduce prosthetic inaccuracies – tolerance stacking:** Reduce technical and biological complications by improving passive fit of restorations.

**Passive fitting screw-retained 3D printed provisional:** Increase predictability and minimize reworks for the clinician while using photogrammetry.

**NobelProcera® Implant bridge with angulated screw channel (ASC):** Accommodate up to 55° of angulation when combined with angulated Multi-unit Abutments, backed by extensive research and a reliable 10-year warranty.



More on clinical cases



Contact us

MKT-5836.AAP Rev 00 (10/24 GMT 93234) © Nobel Biocare USA, LLC, 2024. All rights reserved. Distributed by: Nobel Biocare. Disclaimer: Nobel Biocare, the Nobel Biocare logotype, and all other trademarks are, if nothing else is stated or is evident from the context in a certain case, trademarks of Nobel Biocare. Please refer to [nobelbiocare.com/trademarks](https://nobelbiocare.com/trademarks) for more information. Product images are not necessarily to scale. All product images are for illustration purposes only and may not be an exact representation of the product. Some products may not be regulatory cleared/released for sale in all markets. Please contact the local Nobel Biocare sales office for current product assortment and availability. Caution: Federal (United States) law or the law in your jurisdiction may restrict this device to sale by or on the order of a dentist or a physician. See Instructions For Use for full prescribing information, including indications, contraindications, warnings, and precautions. exocad software is a trademark of exocad GmbH. ICam is manufactured by Imetric 3D, Le Bourg 9, 2950 Courgenay, Switzerland, and distributed by Nobel Biocare. X-Guide® is a trademark of X-Nav. X-Guide® is manufactured by X-Nav Technologies, LLC, 1555 Bustard Rd, Suite 75, Lansdale, PA 19446, and distributed by Nobel Biocare.

