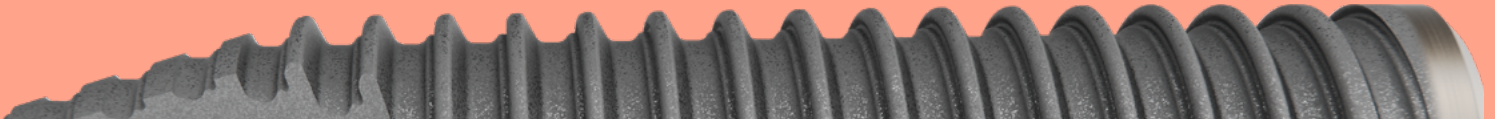


# NobelParallel™ CC implants support success, even in challenging situations

Real-world evidence of versatility for universal use

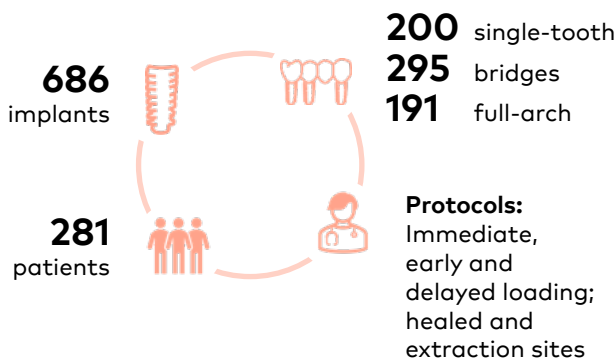


This retrospective analysis of 686 NobelParallel CC implants across a wide variety of indications, demonstrated high implant survival and low marginal bone remodeling, even in challenging clinical situations.

Pozzi A, Tabanella G, Guida A, Hugo O, Authelain C, Scheyer ET, McGuire MK, Lipton D. A Novel Parallel-Walled Dental Implant with a Self-Tapping Apex, Conical Connection, and Platform Shifting: Short-Term Results from a Retrospective Multicenter Clinical Study. Int J Periodontics Restorative Dent. 2021 Jul-Aug;41(4):521-529.

## Study design

A retrospective, multi-center analysis with up to two years' follow-up (mean 10 months)



## Clinical relevance

**Wide versatility** Outcomes not affected by loading protocol, indication, bone quality, or placement in healed vs. extraction sites.

**Freely choose between crestal or sub-crestal placement**

Both resulted in a healthy peri-implant bone response.

**High survival and low bone remodeling**

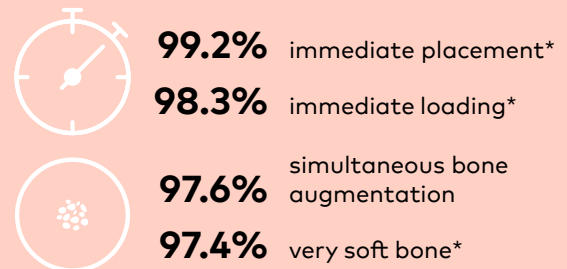
credited to conical connection, parallel-walled geometry and tapered tip.

## The results

### High implant survival

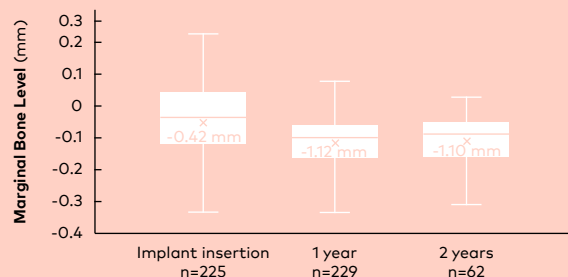
**97.7%** mean cumulative implant survival and success.

Survival rates in challenging situations include:



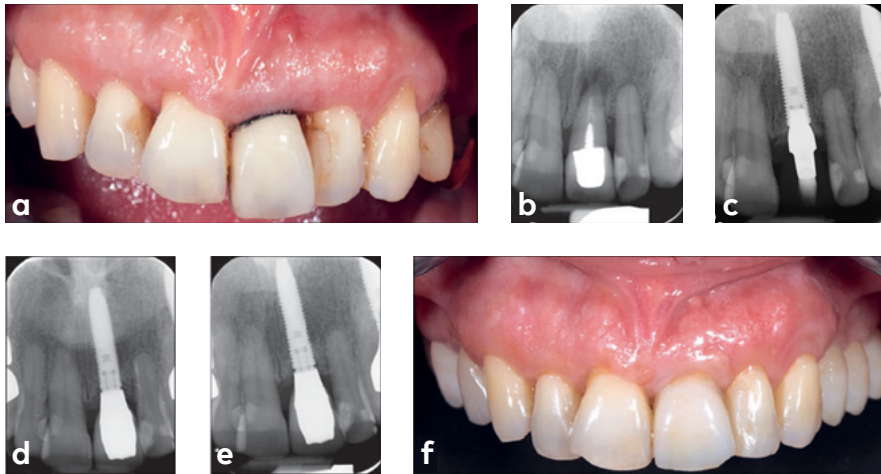
### Low marginal bone remodeling

Stable marginal bone levels after initial remodeling post-insertion



\*survival rates calculated from raw study data (Data on file, Nobel Biocare Services AG)

## Sample clinical case from the study



(a) Preoperative clinical view of a failing maxillary left central incisor. Periapical radiographs were taken (b) prior to tooth extraction, (c) at implant placement (NobelParallel CC narrow platform 3.75, 15 mm long) in a fresh extraction socket followed by immediate provisionalization, and at (d) 12 months and (e) 24 months after implant placement. (f) Clinical view 24 months after implant placement. A natural-looking and healthy soft tissue is seen around the screw-retained, porcelain-fused-to-zirconia crown.

Images courtesy of Quintessence Publishing Company Inc.

**NobelParallel is a well-documented,  
clinically proven implant**

At time of publication, November 2021

**12** publications

**785** patients

**1598** implants

**If you are looking for  
a single implant type  
for your practice,  
NobelParallel CC is a  
clinically proven, highly  
versatile choice.**

**More to explore**



**Read the  
full study**



**FOR - Implant choice:  
treatment guidelines**



**nobelbiocare.com/nobelparallel**

GMT 77902 © Nobel Biocare Services AG, 2022. All rights reserved. Nobel Biocare, the Nobel Biocare logotype and all other trademarks are, if nothing else is stated or is evident from the context in a certain case, trademarks of Nobel Biocare. Please refer to nobelbiocare.com/trademarks for more information. Product images are not necessarily to scale. All product images are for illustration purposes only and may not be an exact representation of the product. Disclaimer: Some products may not be regulatory cleared/released for sale in all markets. Please contact the local Nobel Biocare sales office for current product assortment and availability. See Instructions For Use for full prescribing information, including indications, contraindications, warnings and precautions

**Nobel  
Biocare™**