

Quick reference guide

Photogrammetry prototype to final workflow



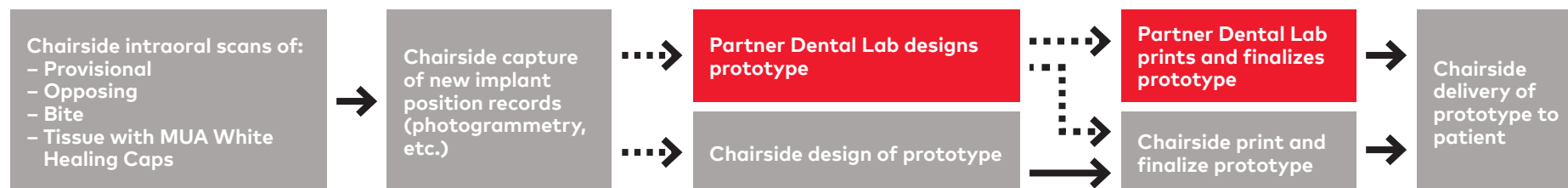
■ Action by clinical practice

■ Action by Partner Dental Lab

■ Action by NobelProcera® center

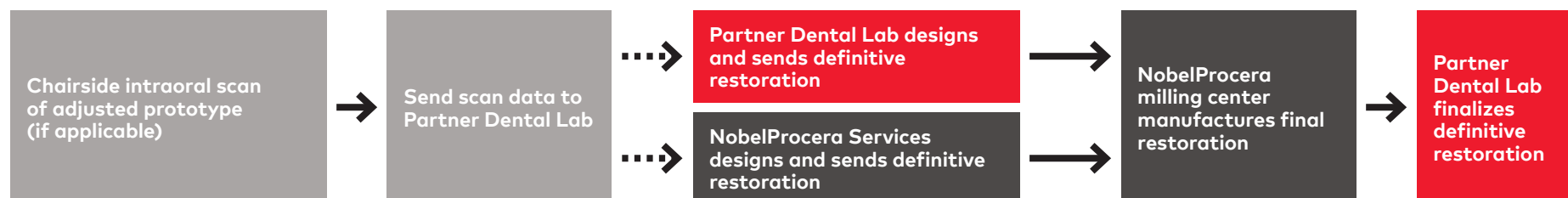
A Prototype prep

Patient left in provisional for ~4–6 month healing period



B Final prep

After prototype adjustments are made (if applicable) and patient approves esthetics



Quick reference guide

Prototype implant bridge checklist

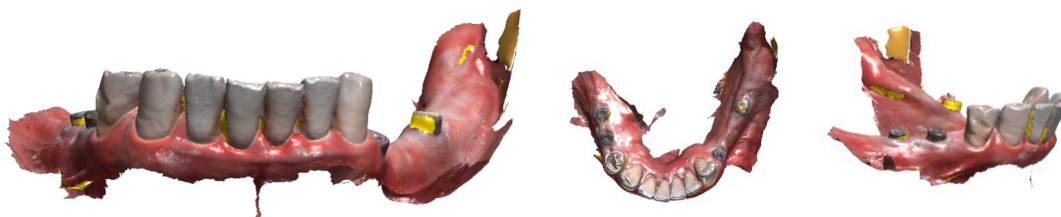
1 Share digital files from IOS

a Restoring jaw with provisional

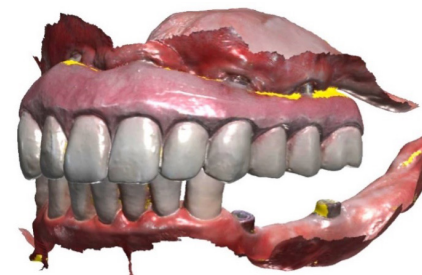
Must capture as much gingival anatomy including full palate and/or retromolar pad areas for aligning purposes



b Opposing arch or opposing jaw with provisional (if restoring both arches)

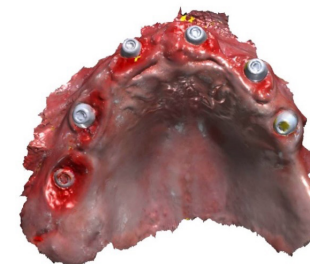


c Bite scan (ensure that the jaws are in the desired position)



d Tissue scan of restoring arch

Recommended to use: Healing Cap Multi-unit (article number 31145)



2 Share additional digital files (required)

a Implant position files

Photogrammetry, FastMap®, etc.

b Smile pictures

Should be taken directly in front of patient with no cant to the head

High smile



Lips at rest*



VITA® shade matching



Retracted smile



Full face smile



Tissue shade matching



c Send files to **Partner Dental Lab**

Quick reference guide

Final NobelProcera® Zirconia Implant Bridge checklist

1 Share digital files

Note: If adjustments were done to the prototype to properly seat in the mouth, do not go to final. New photogrammetry and IO records should be taken.

- a** Restoring jaw with prototype
Must capture changes on the prototype



- b** Opposing jaw



- c** Bite scan



- d** Optional: Tissue scan

A new scan must be provided if there are significant changes

- e** Send files to **Partner Dental Lab**

Must specify the same Case Reference from the provisional

Quick reference guide

Product and warranty information

1 Prototype implant bridge



- Fabricate with latest full-arch provisional resin (SprintRay OnX Tough 2 or newer)
- Only available on MUA
- Full-arch provisional Flat Seat Screw
 - Multiunit with Unigrip™ (Dess article number 19.096)
- Restore with Unigrip™ driver (tighten to 15 Ncm)



2 Final NobelProcera® Zirconia Implant Bridge



- Authentic NobelProcera® restoration with Nobel Biocare clinical screws included
- Restore with the following drivers/torque:
 - MUA – Omnigrip™ Mini (15 Ncm)



3 Warranty information

Final NobelProcera® Zirconia Implant Bridge

- Product guaranteed for 10 years from ship date