

Single-tooth replacement in the posterior region using the On1™ concept

Giacomo Fabbri
Italy



Giacomo Fabbri

Patient

Female, 36 years old

Clinical situation

Missing tooth after extraction of lower left first molar

Surgical solution

NobelReplace CC RP 5 × 10 mm
On1 Base CC RP 1.75 mm
On1 Healing Cap RP 1.5 mm

Restorative solution

On1 Universal Abutment RP 0.3 mm
with a full-contour zirconia crown

Surgery date

August 2016

Total treatment time

3 months

“The On1 concept represents a great solution for treatment of the posterior region. It offers many advantages from a biological and biomechanical perspective. Moreover, it minimizes the patient’s discomfort during all prosthetic procedures.”

Initial clinical situation



Surgical procedure

Restorative procedure

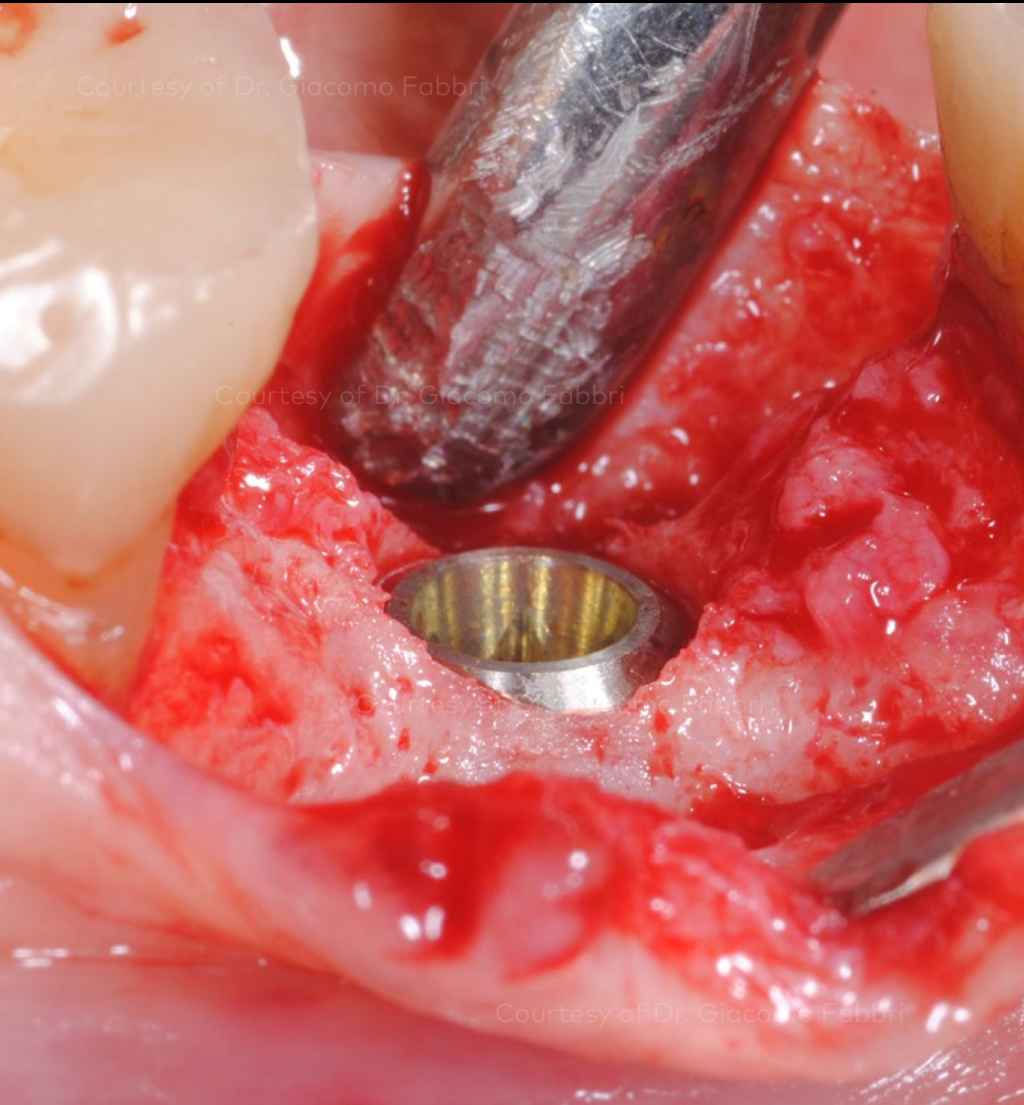
Outcome



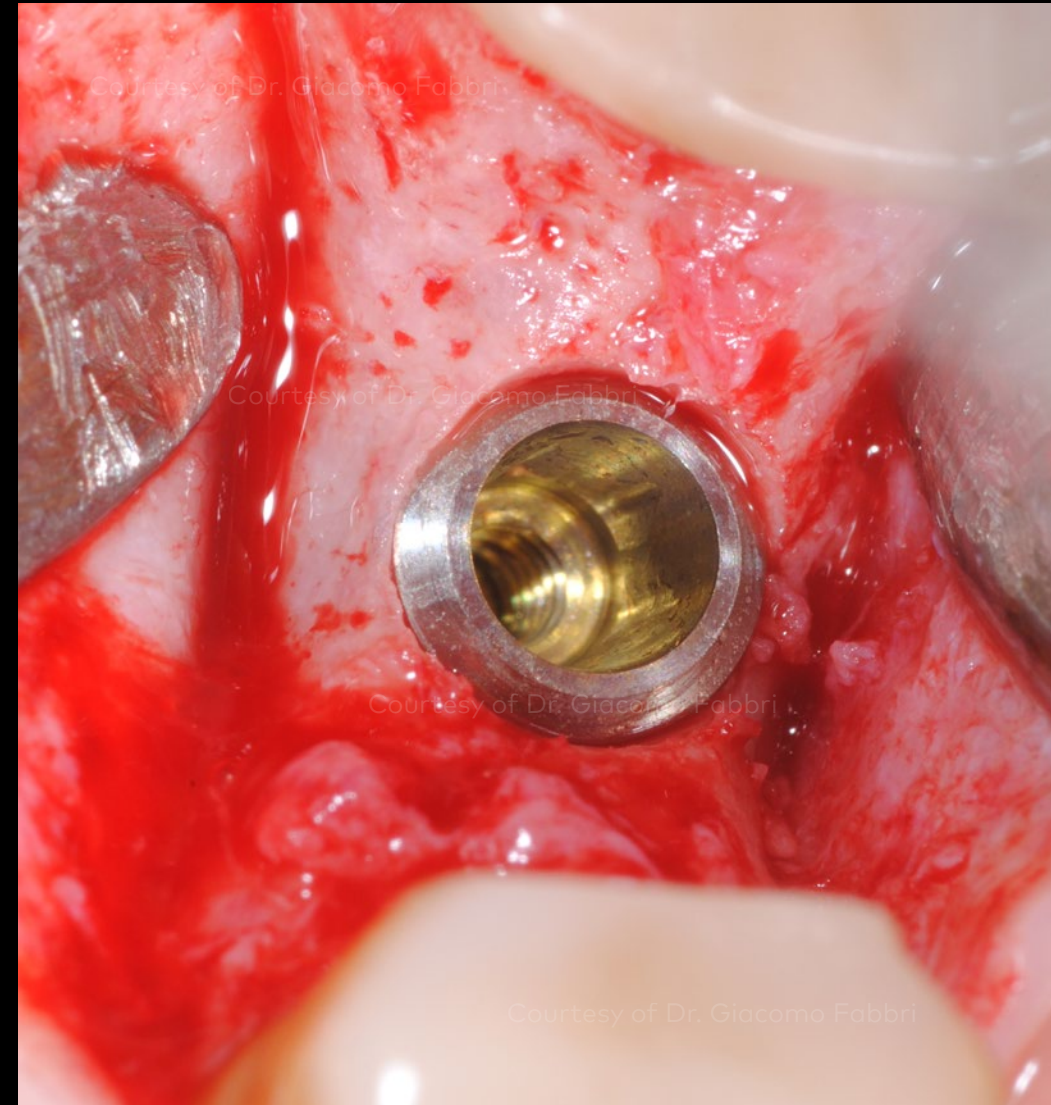
The patient requires an implant-supported rehabilitation of the second molar after tooth extraction three months earlier. Clinical and anatomical conditions are favorable for proceeding with a one-stage surgical approach without any grafting procedures.

X-ray evaluation before the implant placement.

Initial clinical situation



Surgical procedure



Restorative procedure

Outcome

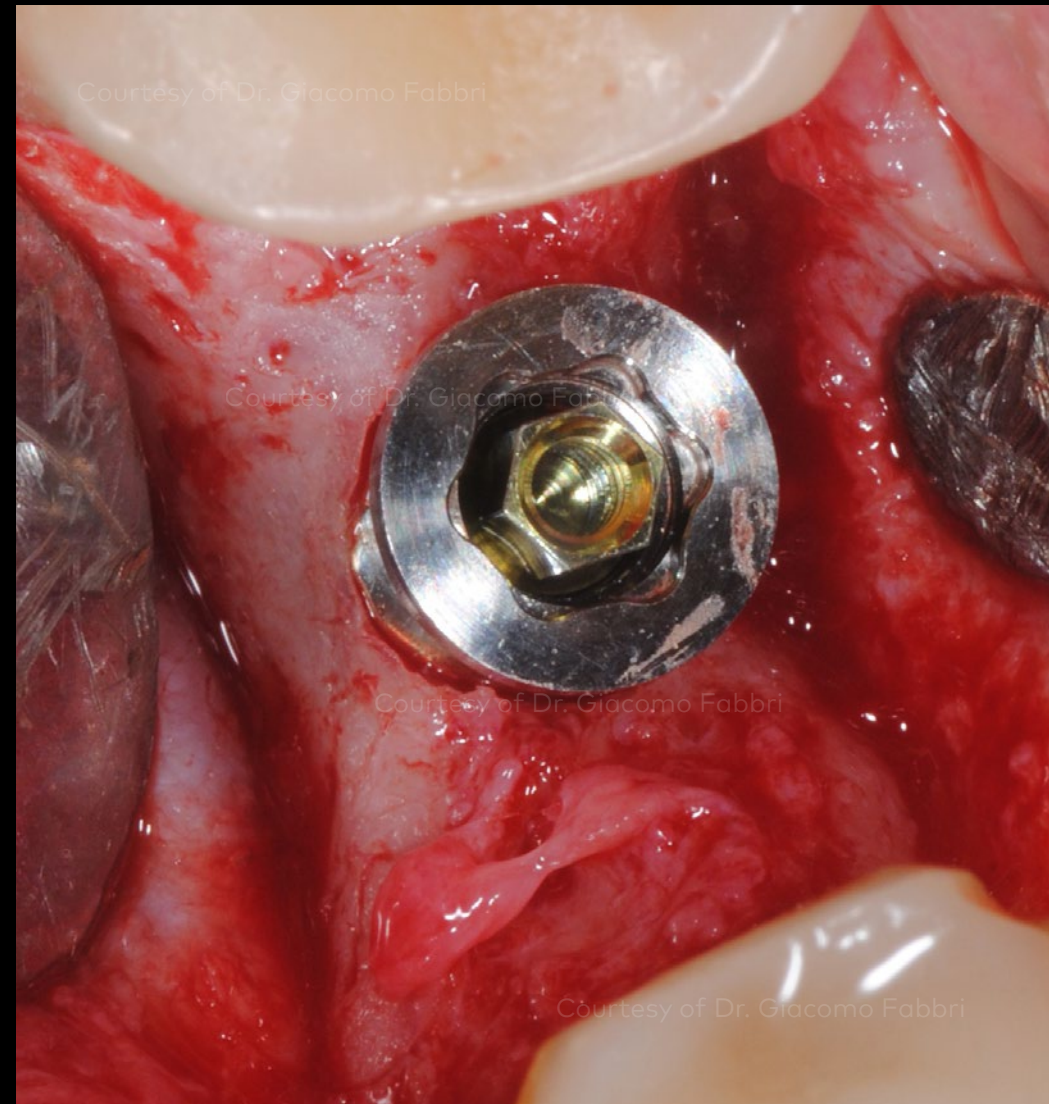
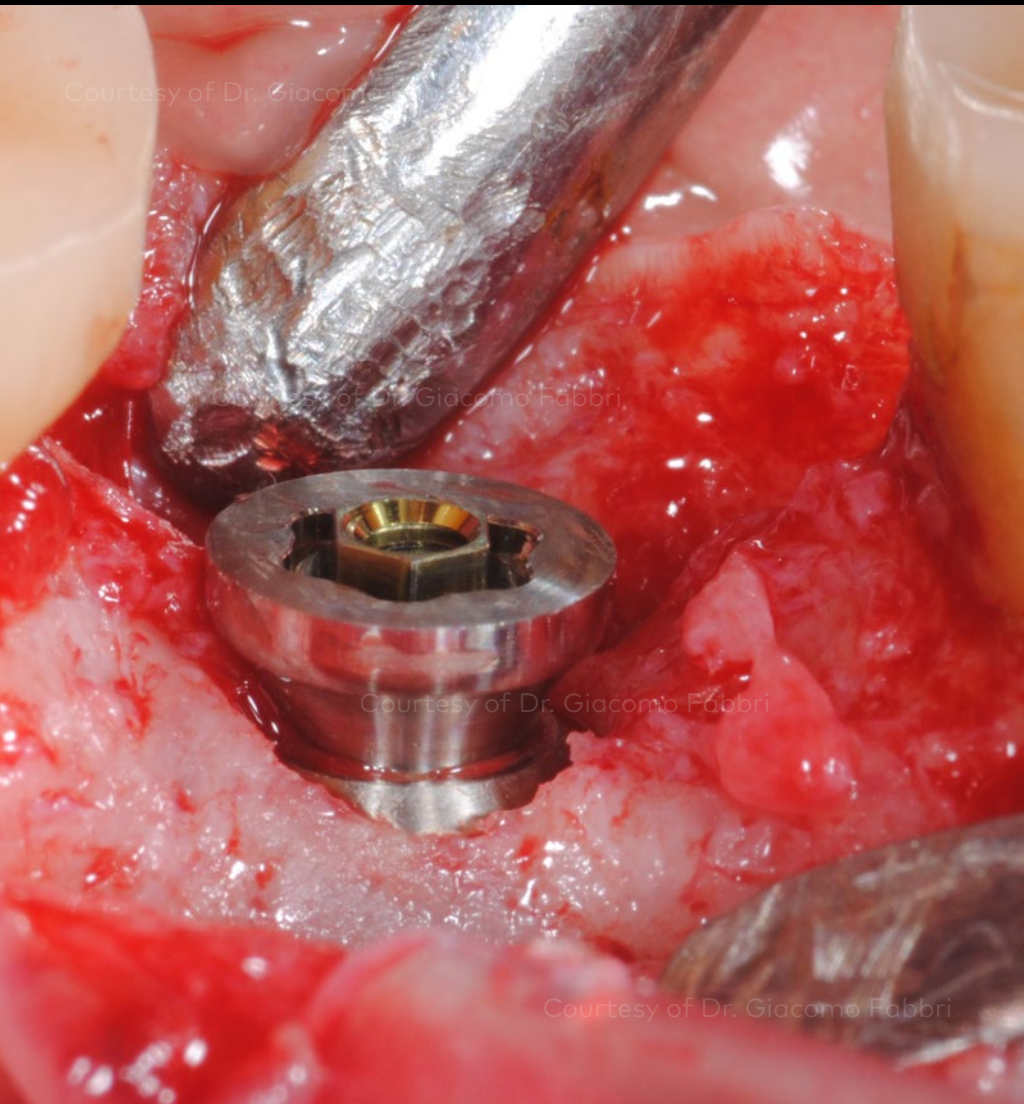
A NobelReplace CC implant is placed slightly below the residual bone crest in order to maintain a soft tissue thickness of 3 mm above the implant platform. The torque is measured to 35 Ncm.

Initial clinical situation

Surgical procedure

Restorative procedure

Outcome



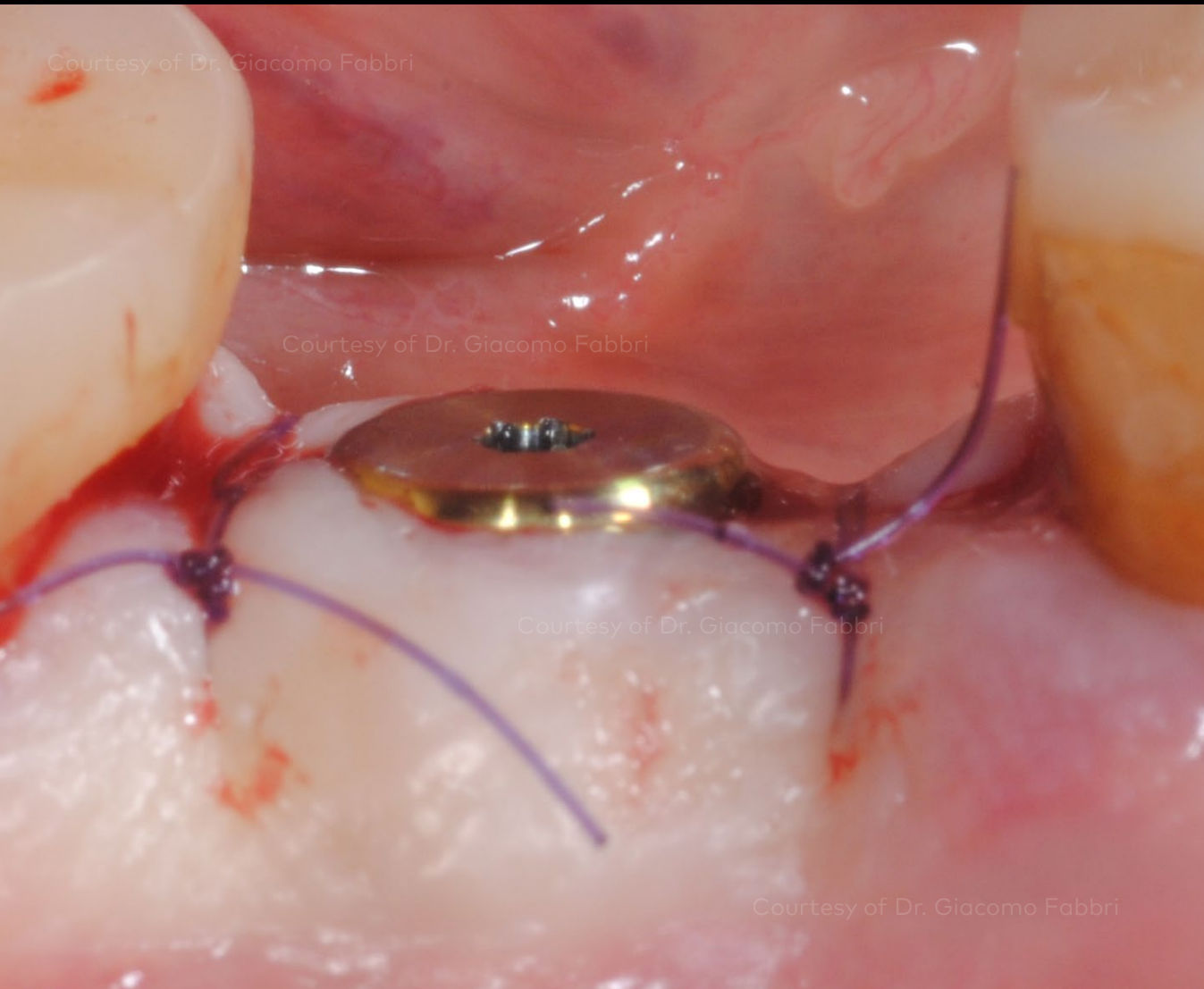
An On1 Base is placed on the implant and torqued to 35 Ncm.

Initial clinical situation

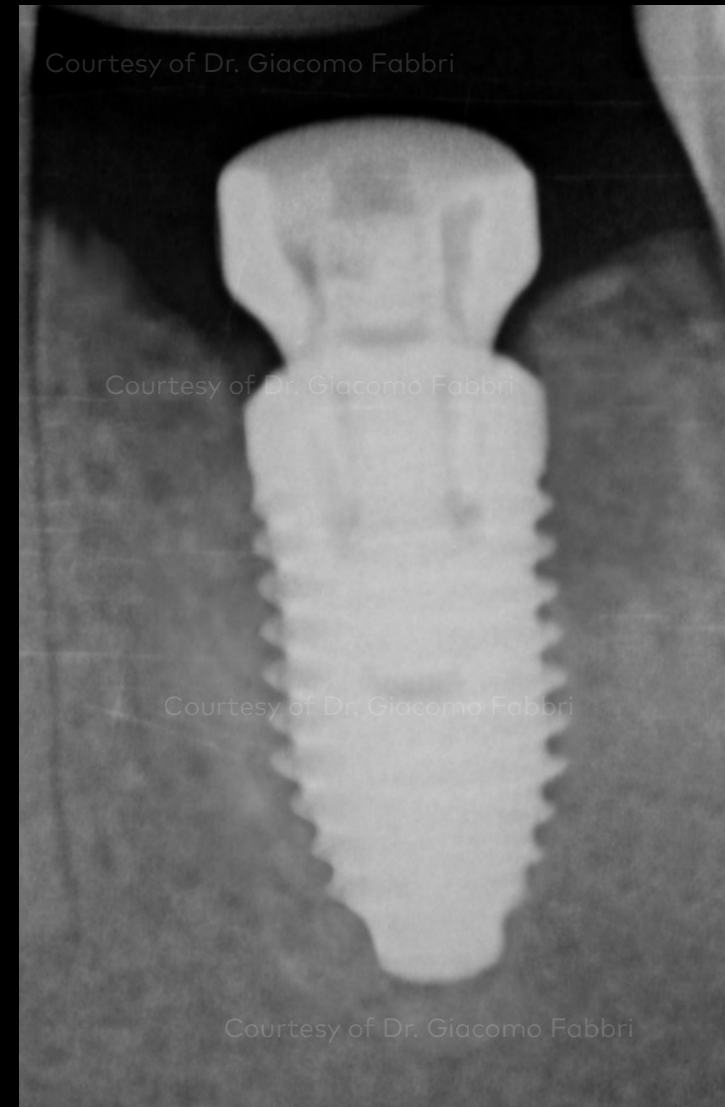
Surgical procedure

Restorative procedure

Outcome



Suture after placement of the On1 Healing Cap.



X-ray evaluation immediately after the surgery.

Initial clinical situation

Surgical procedure

Restorative procedure

Outcome



Intraoral situation eight weeks after the implant surgery.



The soft tissue shows good healing after removal of the On1 Healing Cap.

Initial clinical situation



X-ray evaluation to control proper seating of the impression coping.

Surgical procedure



Master cast with On1 Base Replica.

Restorative procedure

Outcome

Initial clinical situation

Surgical procedure

Restorative procedure

Outcome



The On1 Universal Abutment is placed on the master model.

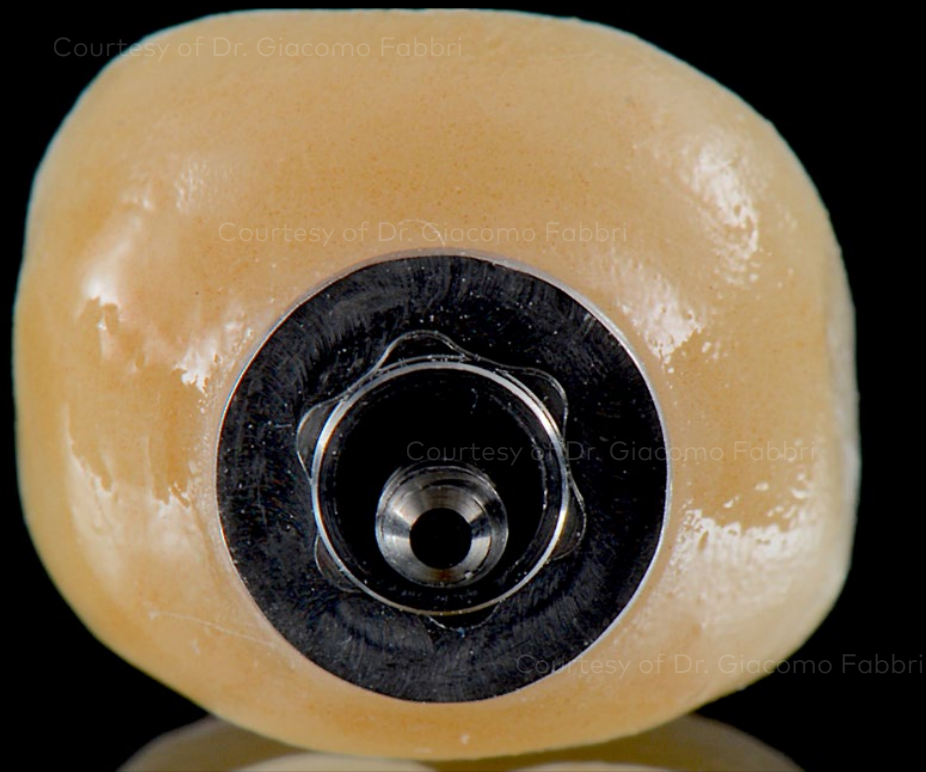
The On1 Universal Abutment makes it possible to create a screw-retained solution, which allows the use of various technologies and materials for the definitive crown.

Initial clinical situation

Surgical procedure

Restorative procedure

Outcome



The final restoration. Monolithic screw-retained full-contour zirconia cemented onto the On1 Universal Abutment.



The final restoration seated on the model

Initial clinical situation

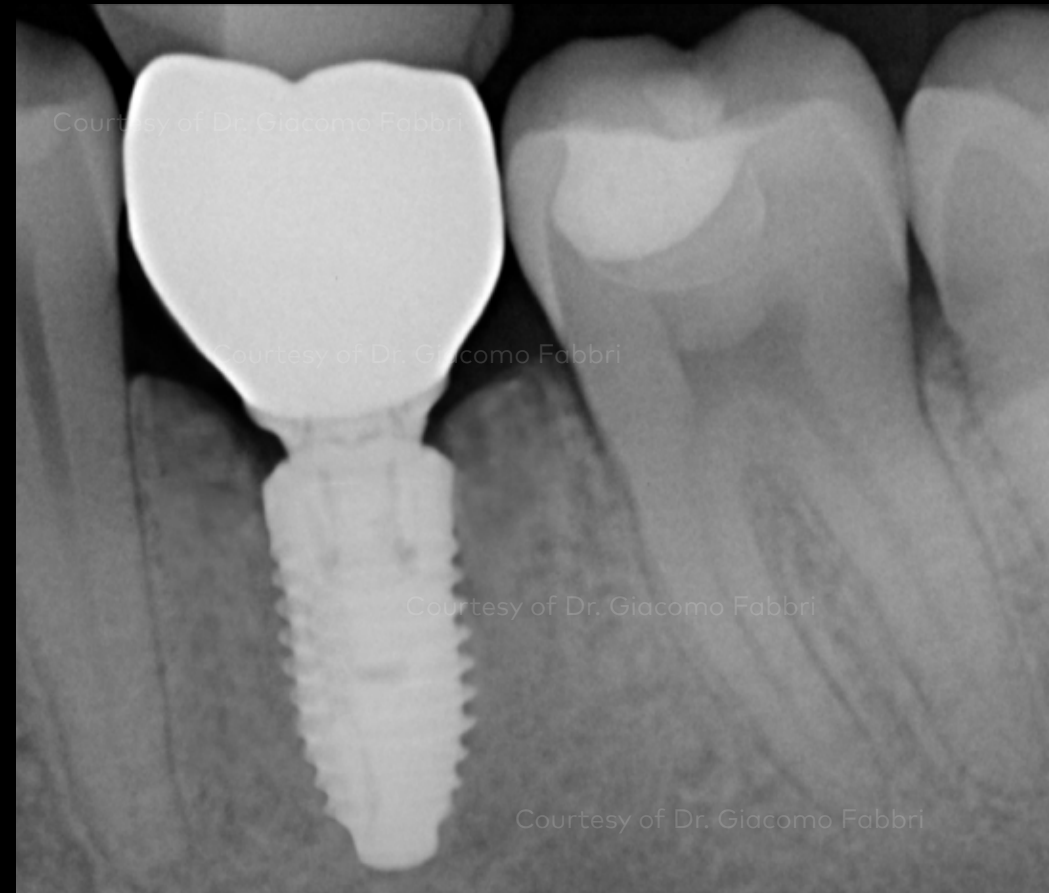
Surgical procedure

Restorative procedure

Outcome



Intraoral view of the final prosthetic outcome. The screw access hole was closed with Teflon and composite.



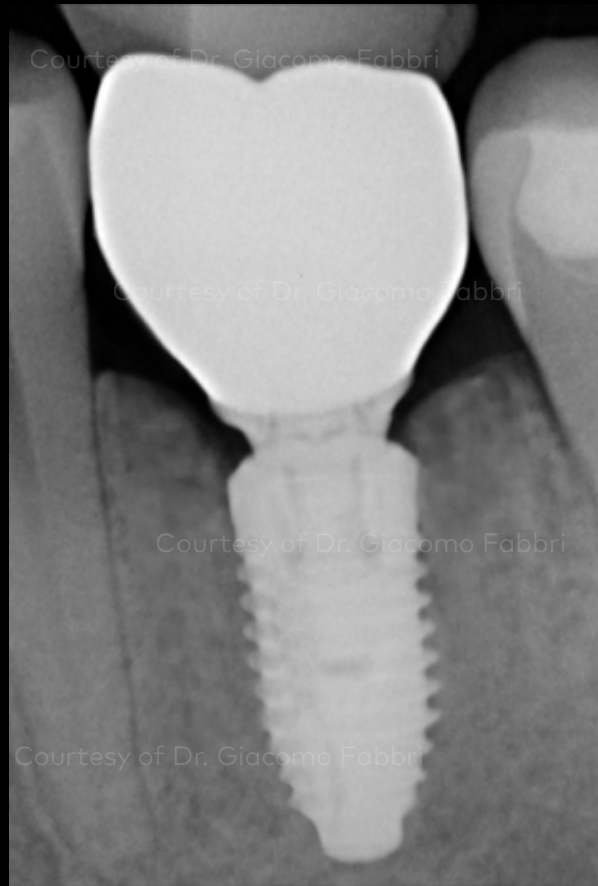
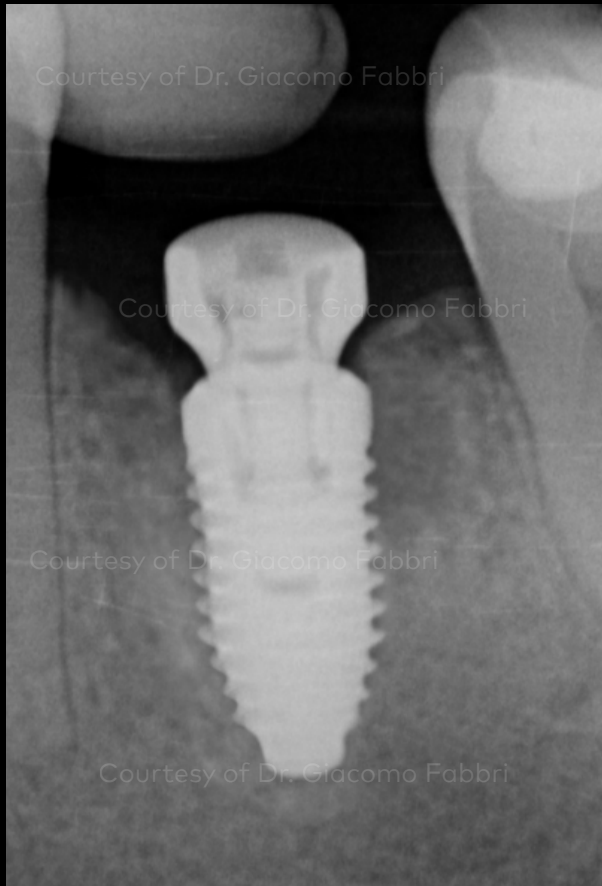
X-ray evaluation of the final restoration.

Initial clinical situation

Surgical procedure

Restorative procedure

Outcome



X-ray evaluation after implant placement.

X-ray evaluation after the delivery of the final screw-retained crown.

X-ray evaluation after one month of function.

Initial clinical situation

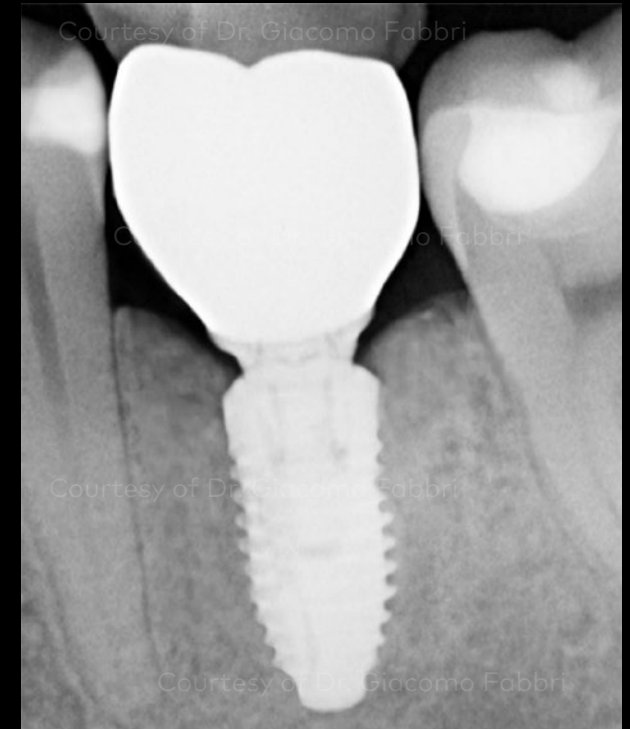


Intraoral situation 2.5 years after implant placement.

Surgical procedure

Restorative procedure

Outcome



X-ray evaluation 2.5 years after implant placement.

Case courtesy of Dr. Giacomo Fabbri

