

CLINICAL CASE



All-on-4® treatment concept

Enrico Agliardi
Italy





Enrico Agliardi

Patient

65, female, fully edentulous
in both jaws

Clinical situation

Wearing total removable dentures

Surgical solution

All-on-4® treatment concept,
NobelParallel™ CC TiUltra™ RP 4.3x13 mm,
Multi-unit Abutment Xeal™

Restorative solution

NobelProcera® implant bar with
composite teeth (planned)

Surgery date

23 September 2019

Total treatment time

Approximately 7 months (April 2020)

“Thanks to the new Xeal surface,
I can get early soft tissue healing and
sealing around the abutment. Xeal
abutments are a must-have product
for all clinicians performing immediate
loading procedures.”

Initial clinical situation

Surgical procedure

Restorative procedure

Outcome



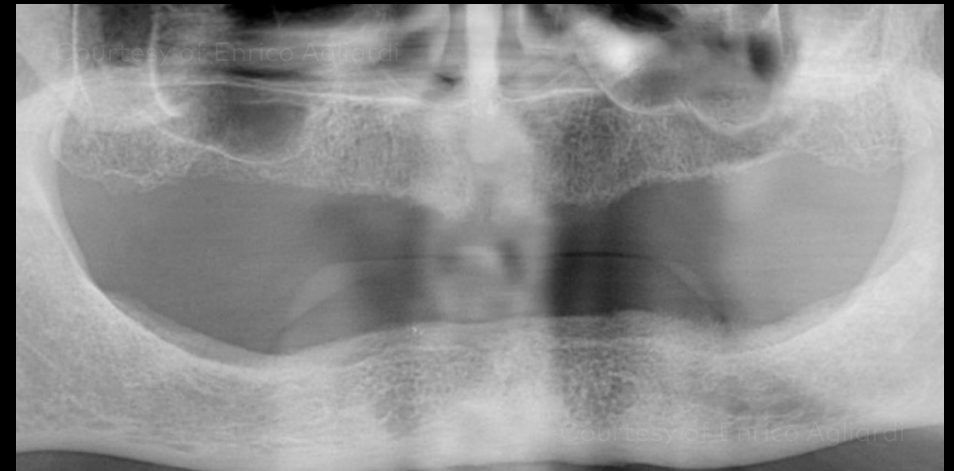
Front, side and profile images of the fully edentulous patient.
Note the lack of lip support because of the bone resorption.

Initial clinical situation

Surgical procedure

Restorative procedure

Outcome



Intraoral view with removable dentures in both maxilla and mandible

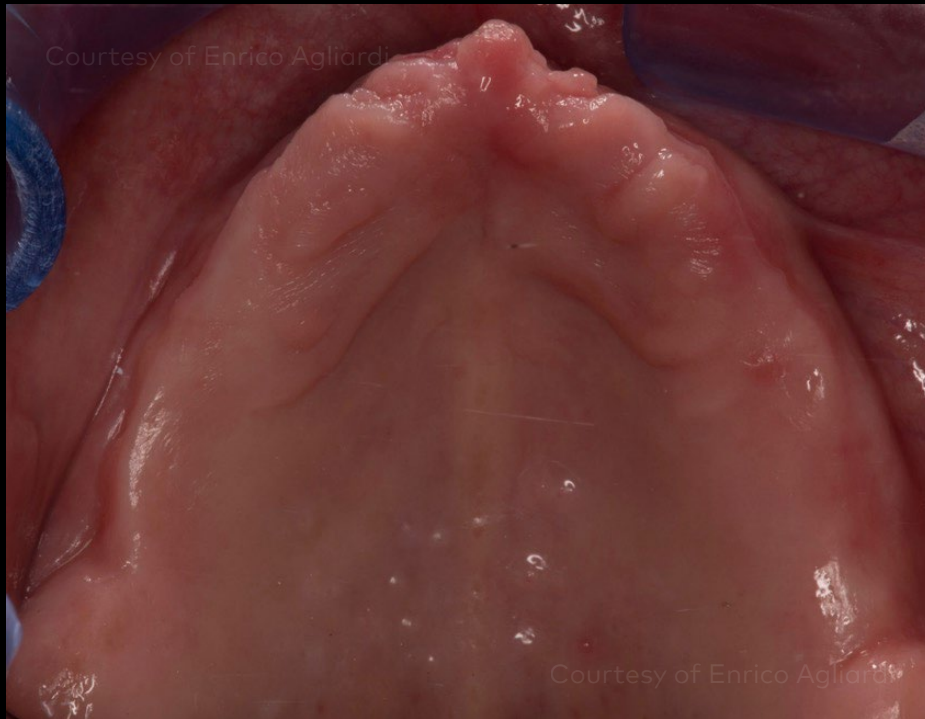
Moderate ridge resorption with estimated bone quality of D3 to D4 in the maxilla and D2 to D3 in the mandible

Initial clinical situation

Surgical procedure

Restorative procedure

Outcome



Occlusal view of the maxilla



Mandible showing unfavorable ridge form

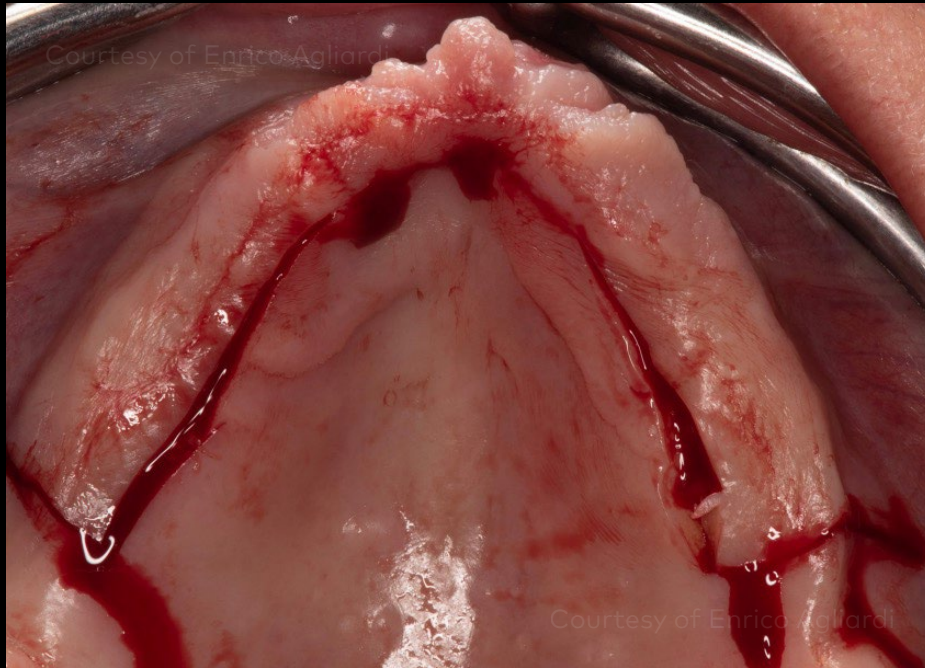
Initial clinical situation

Surgical procedure

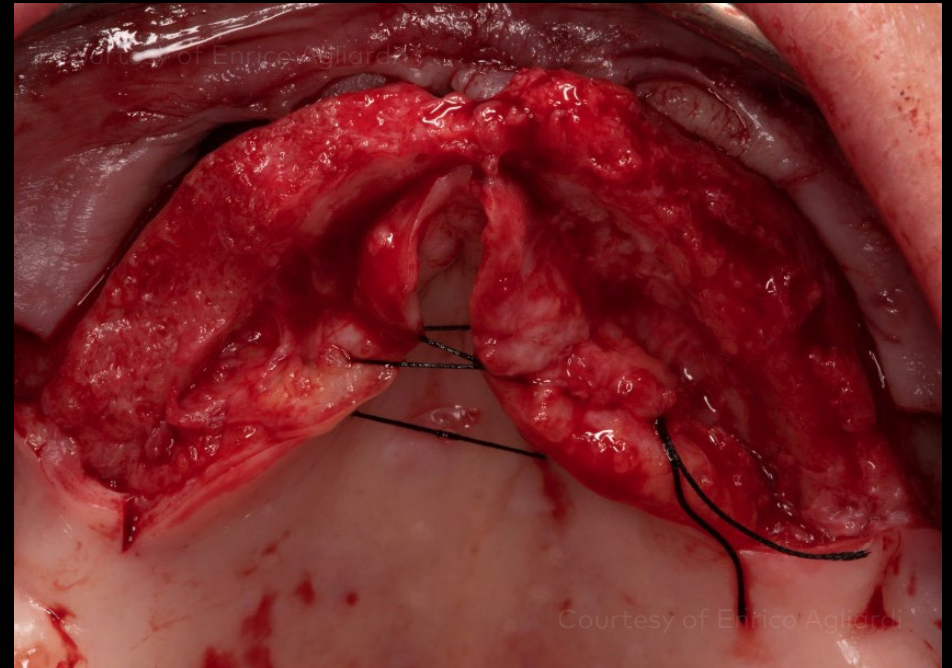
Restorative procedure

Outcome

Maxilla



Making a palatal incision for flap elevation



Full-thickness flap elevation in the maxilla

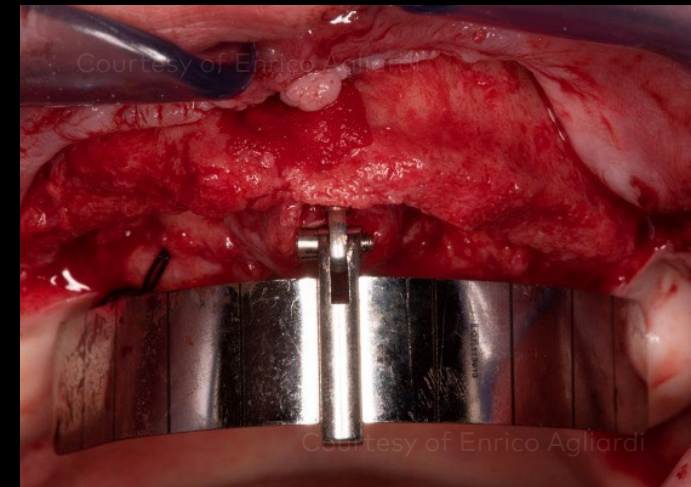
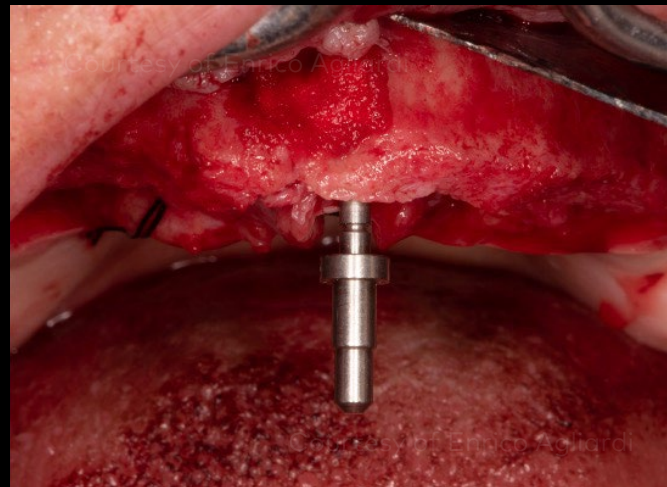
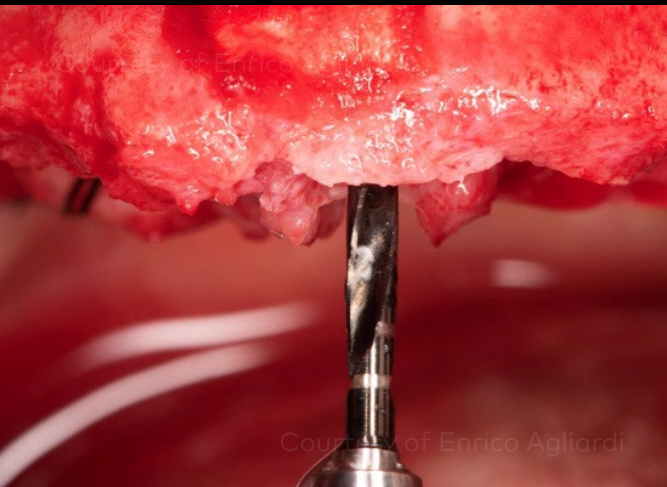
Initial clinical situation

Surgical procedure

Restorative procedure

Outcome

Maxilla



Preparing the osteotomy in the midline using a \varnothing 2 mm Twist Drill for insertion of the All-on-4[®] Guide

Confirming angulation with the direction indicator

Placing the All-on-4[®] Guide for predictable positioning of implants

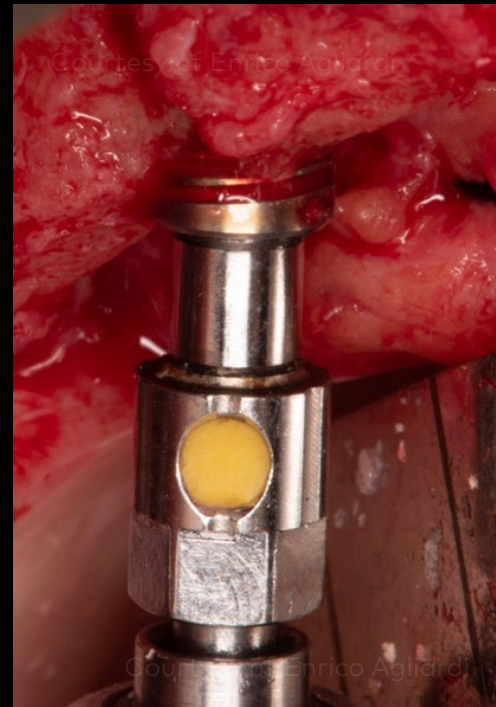
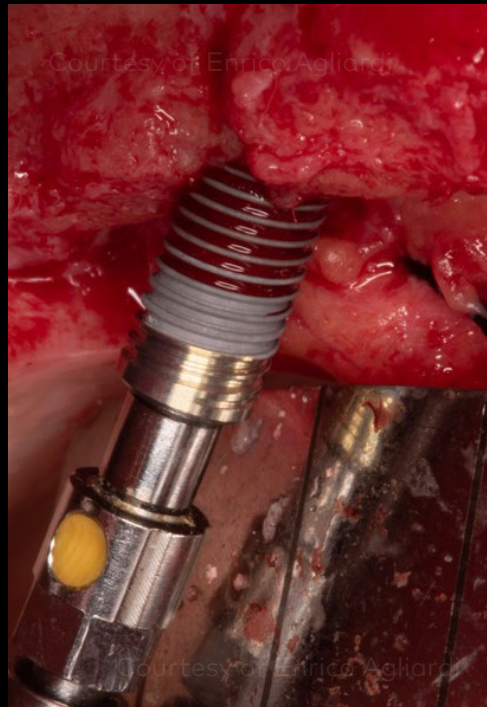
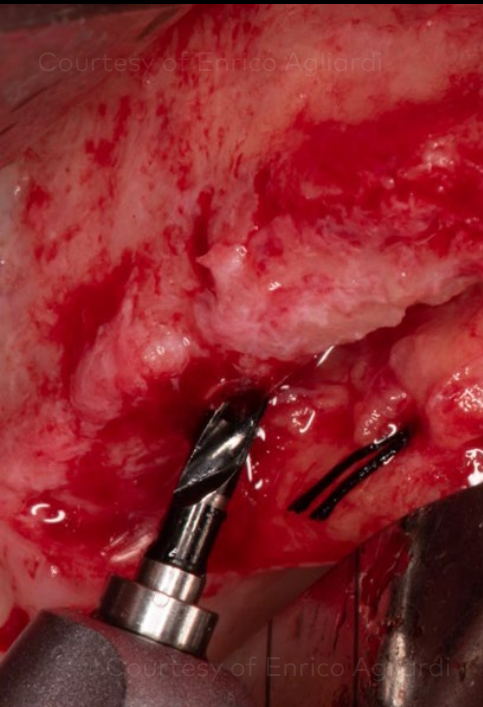
Initial clinical situation

Surgical procedure

Restorative procedure

Outcome

Maxilla



Twist Drill in the posterior

Placement of NobelParallel CC implant with TiUltra™ surface

Implant inserted until collar

Implant inserted in the posterior

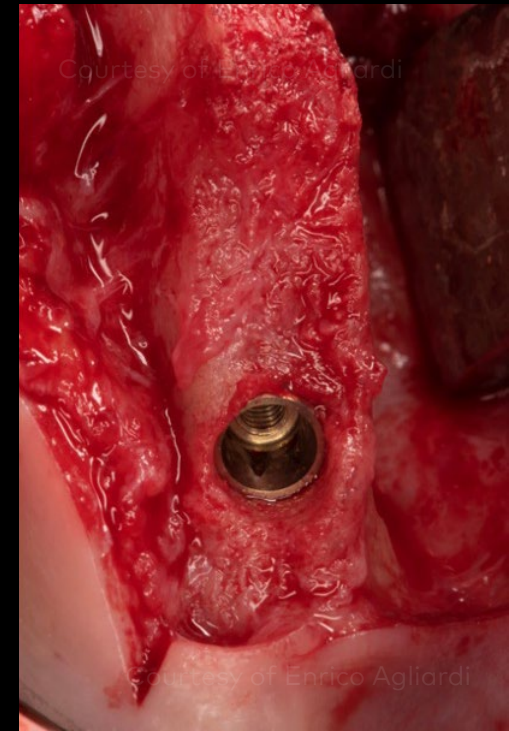
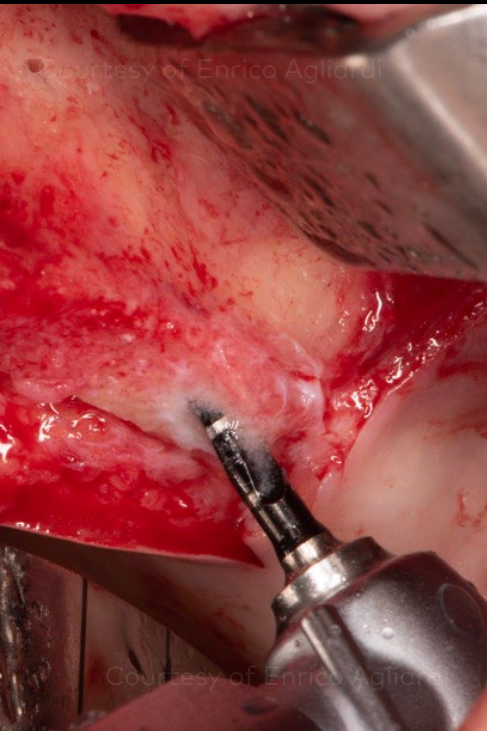
Initial clinical situation

Surgical procedure

Restorative procedure

Outcome

Maxilla



Opposite side: posterior osteotomy preparation and implant placement

Use of Multi-unit Aligning Instrument to find the suitable Multi-unit Abutment angle

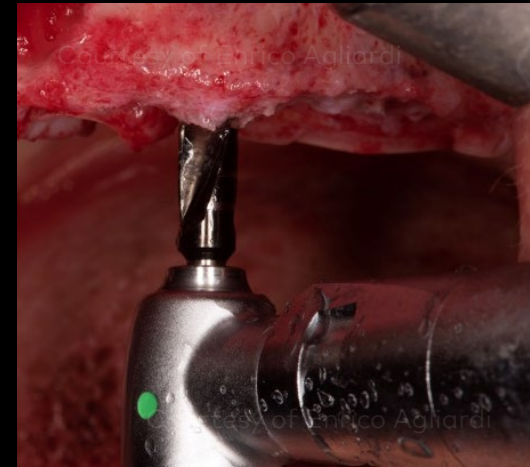
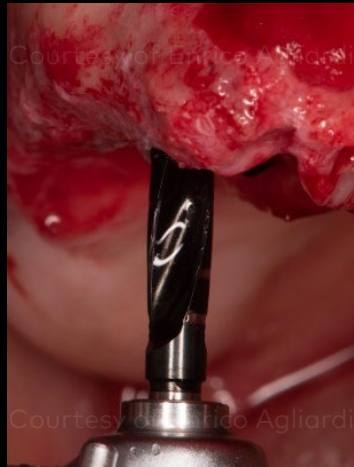
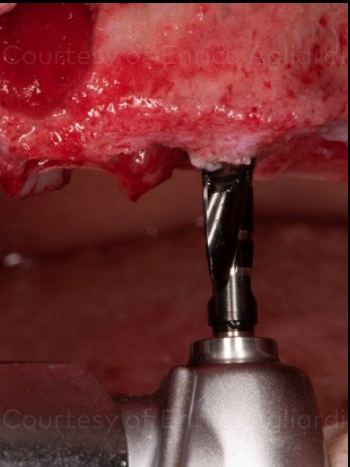
Initial clinical situation

Surgical procedure

Restorative procedure

Outcome

Drill protocol



Anterior implants: Steps of the osteotomy preparation

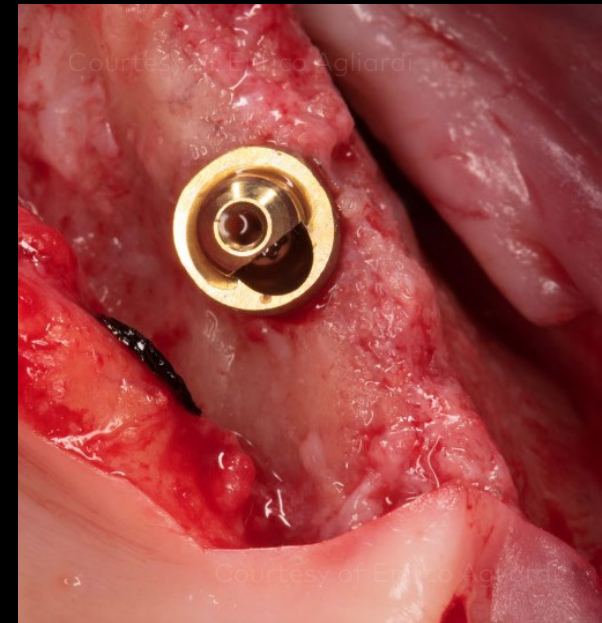
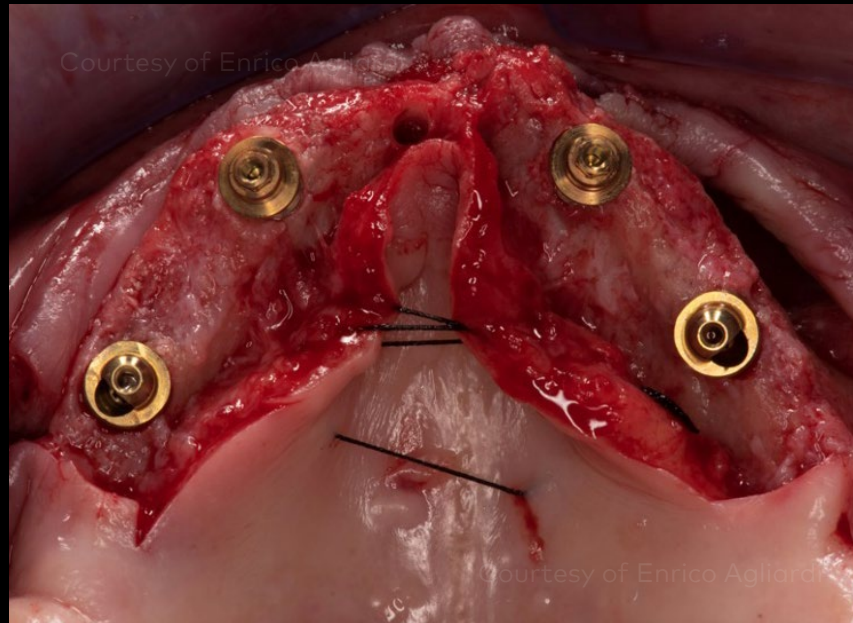
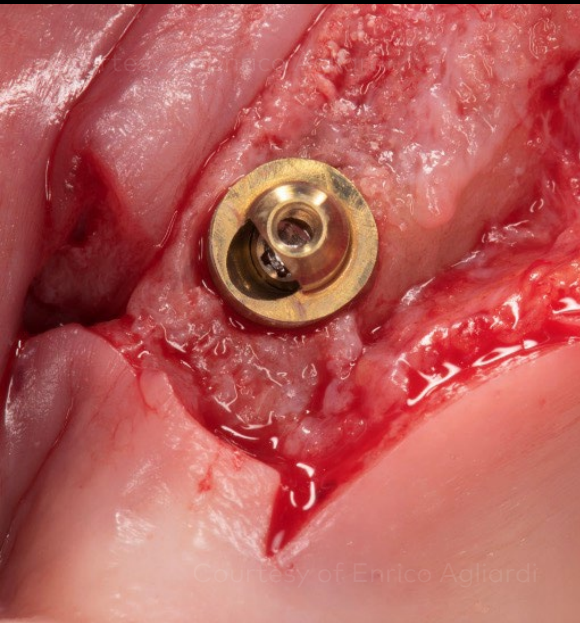
Initial clinical situation

Surgical procedure

Restorative procedure

Outcome

Maxilla



Multi-unit abutments Xeal™

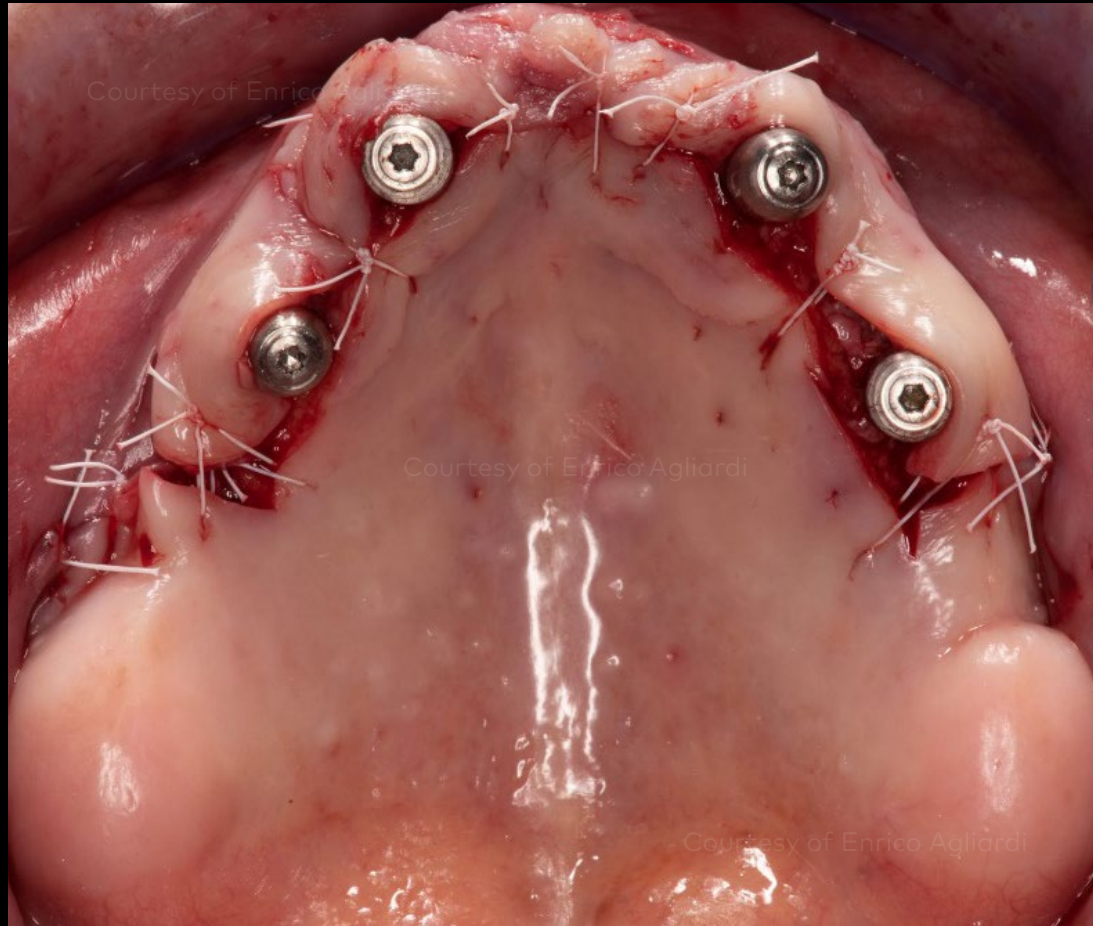
Initial clinical situation

Surgical procedure

Restorative procedure

Outcome

Maxilla



Flap closure and suturing

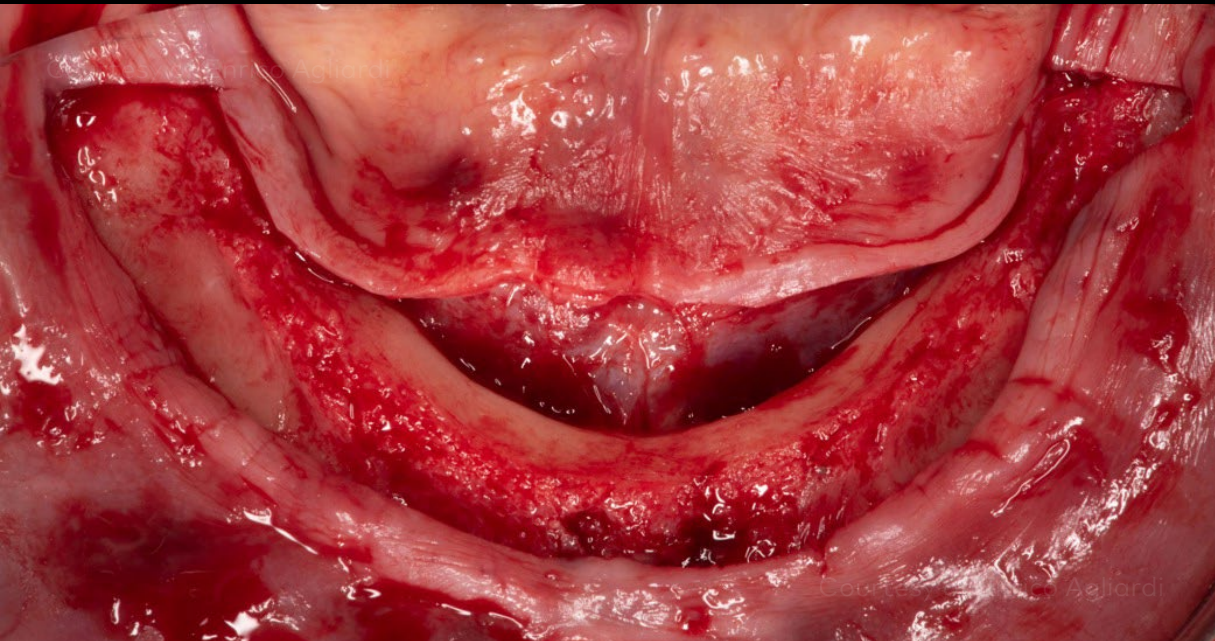
Initial clinical situation

Surgical procedure

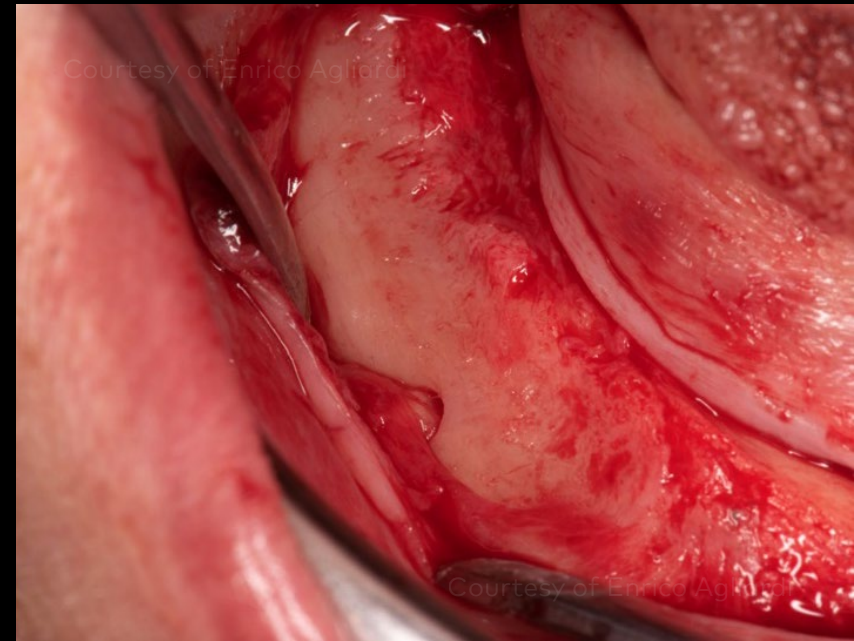
Restorative procedure

Outcome

Mandible



Raising the flap in the mandible



Isolation of alveolar nerve

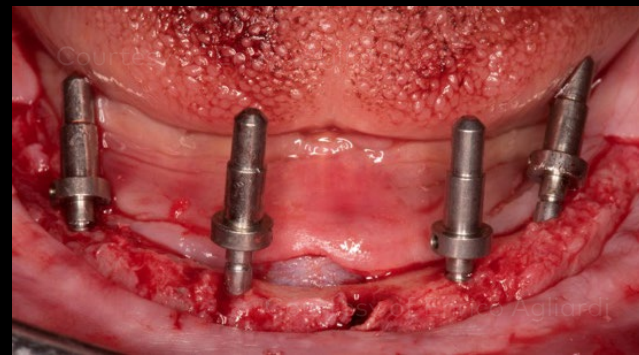
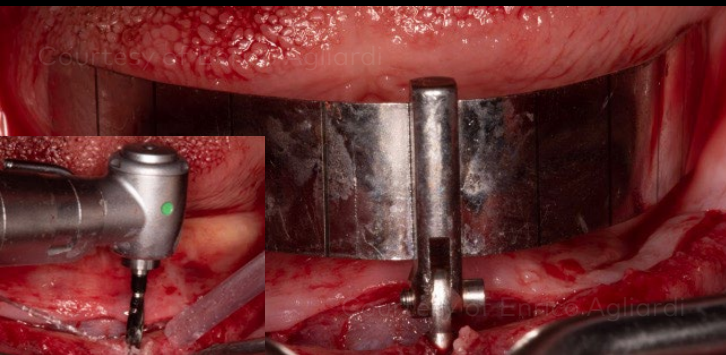
Initial clinical situation

Surgical procedure

Restorative procedure

Outcome

Mandible



Making an osteotomy in the midline using a \varnothing 2 mm Twist Drill for insertion of the All-on-4® Guide

Evaluating the direction of the osteotomies using direction indicators

Occlusal view of the osteotomies

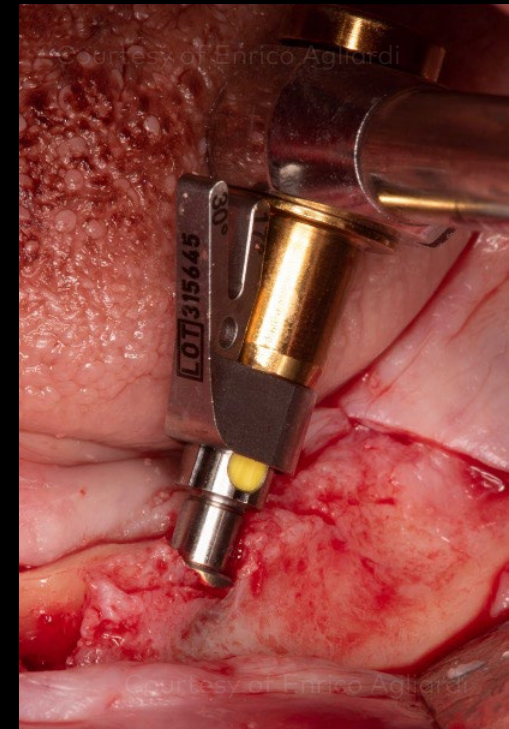
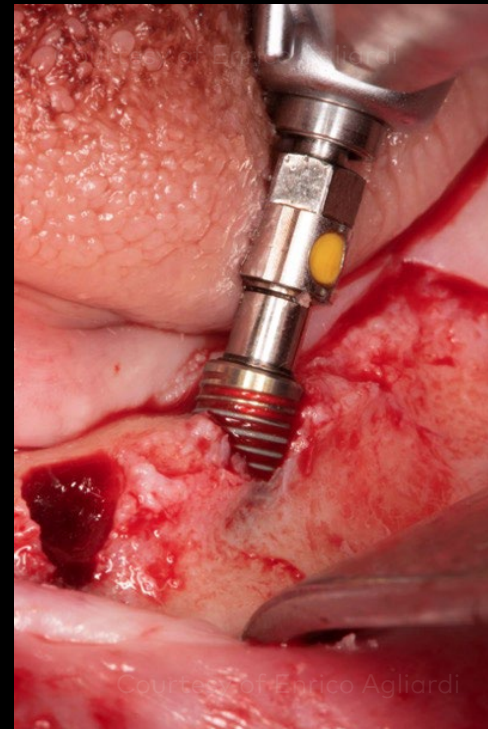
Initial clinical situation

Surgical procedure

Restorative procedure

Outcome

Mandible



Implant insertion in posterior positions

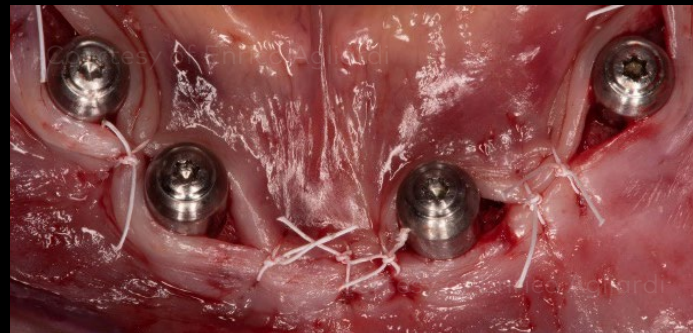
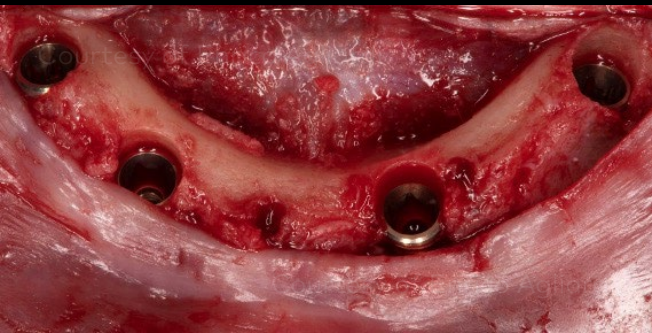
Initial clinical situation

Surgical procedure

Restorative procedure

Outcome

Mandible



All implants placed

Closing and suturing the flap

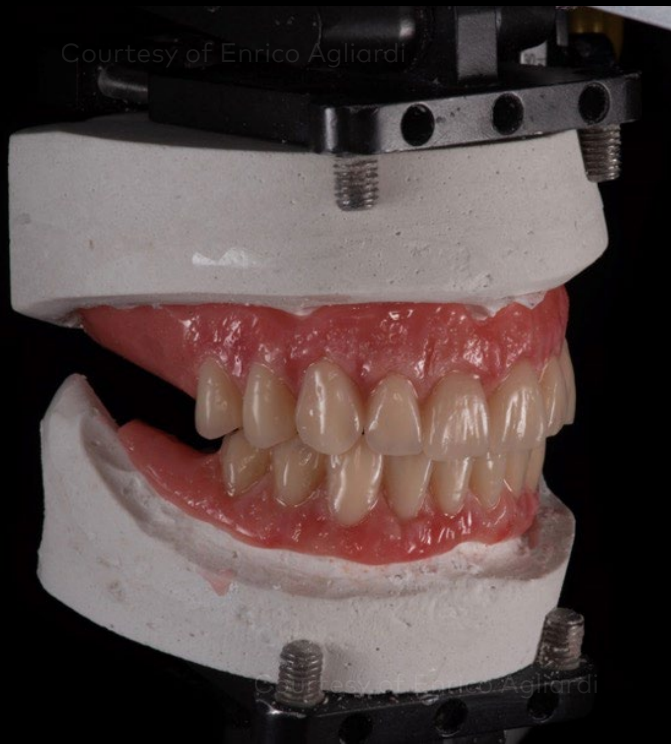
Healed soft tissue around Multi-unit Abutments Xeal™

Initial clinical situation

Surgical procedure

Restorative procedure

Outcome



Immediate provisional prostheses, planned before surgery in articulator after facebow registration

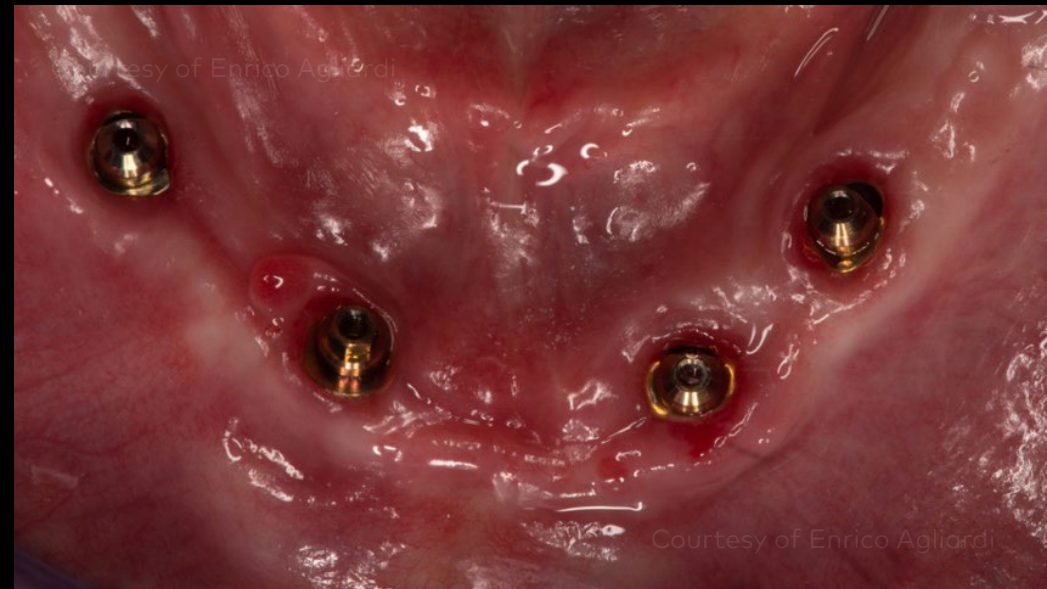
Prosthesis finalized after the surgery before delivery to the patient

Initial clinical situation

Surgical procedure

Restorative procedure

Outcome



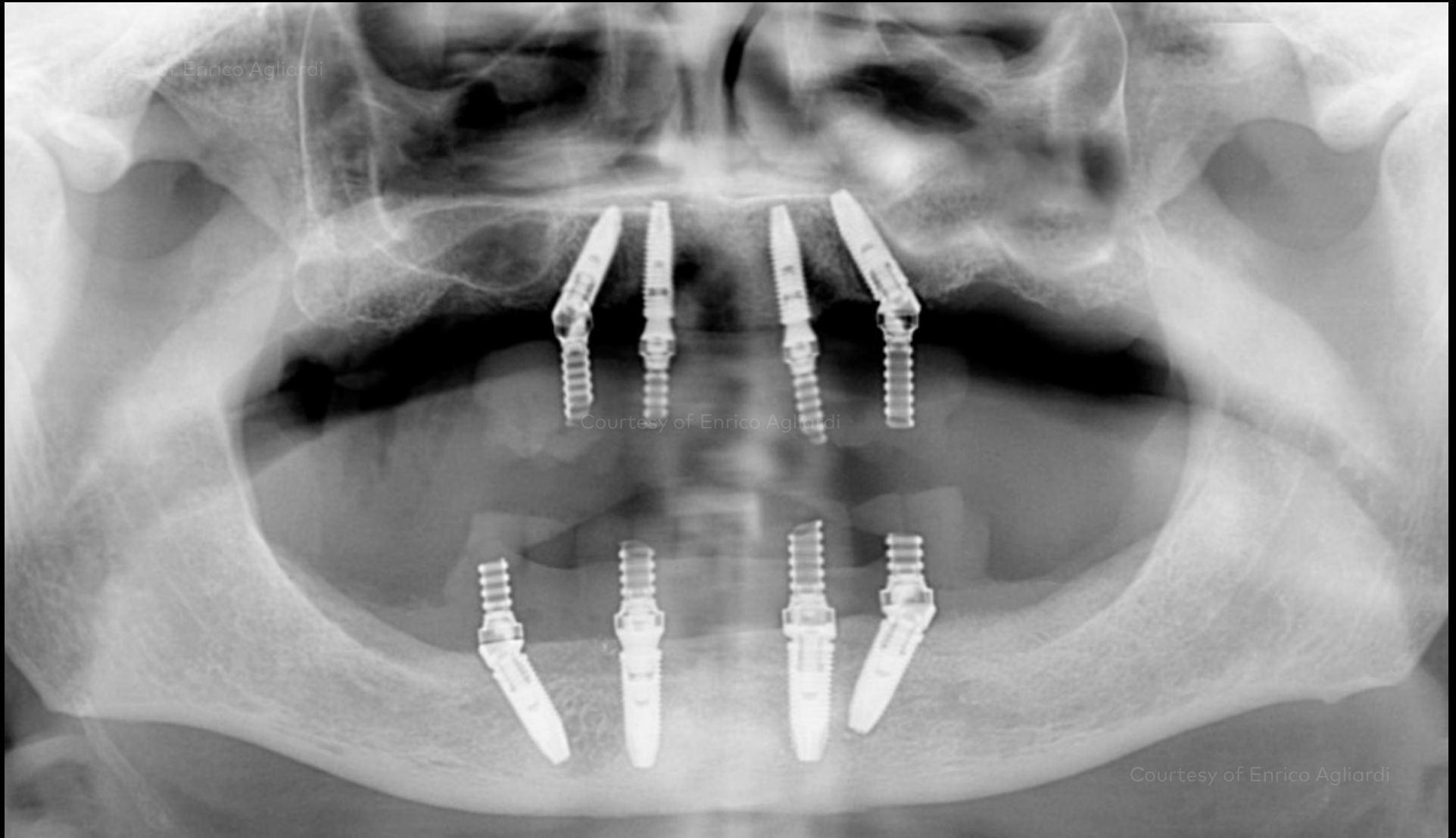
Healed maxilla and mandible.
Note the healthy soft tissue 2 weeks after surgery.

Initial clinical situation

Surgical procedure

Restorative procedure

Outcome



2 months after implant insertion and placement of Temporary Snap Copings on Multi-unit Abutment Xeal™

Initial clinical situation

Surgical procedure

Restorative procedure

Outcome



Finalization of the temporary prosthetic.
Occlusal view shows Temporary Coping access holes blocked

Initial clinical situation

Surgical procedure

Restorative procedure

Outcome



13 months after implant insertion

Initial clinical situation

Surgical procedure

Restorative procedure

Outcome



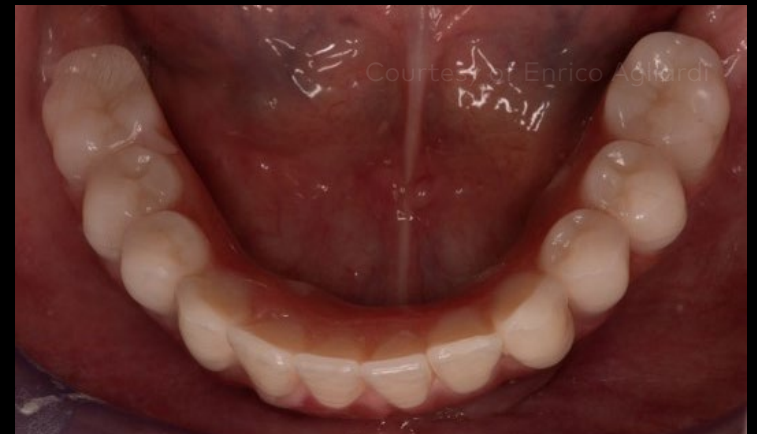
13 months after implant insertion with the final prostheses

Initial clinical situation

Surgical procedure

Restorative procedure

Outcome



Final prostheses 13 months after implant surgery.

Initial clinical situation

Surgical procedure

Restorative procedure

Outcome



Before treatment

After rehabilitation with the All-on-4® treatment concept

Smile close-up before (top) and after rehabilitation of the patient with the All-on-4® treatment concept (bottom)

Initial clinical situation

Surgical procedure

Restorative procedure

Outcome



13 months after surgery

Case courtesy of Dr. Enrico Agliardi



GMT 72221 GB 2011 © Nobel Biocare Services AG, 2020. All rights reserved. Nobel Biocare, the Nobel Biocare logotype and all other trademarks are, if nothing else is stated or is evident from the context in a certain case, trademarks of Nobel Biocare. Please refer to [nobelbiocare.com/trademarks](https://www.nobelbiocare.com/trademarks) for more information. Product images are not necessarily to scale. Disclaimer: Some products may not be regulatory cleared/released for sale in all markets. Please contact the local Nobel Biocare sales office for current product assortment and availability. For prescription use only. All product images are for illustration purposes only and may not be an exact representation of the product. Caution: Federal (United States) law or the law in your jurisdiction restricts this device to sale by or on the order of a dentist or a physician. See Instructions For Use for full prescribing information, including indications, contraindications, warnings and precautions. Nobel Biocare does not take any liability for any injury or damage to any person or property arising from the use of this clinical case. This clinical case is not intended to recommend any measures, techniques, procedures or products, or give advice, and is not a substitute for medical training or your own clinical judgement as a healthcare professional. Viewers should never disregard professional medical advice or delay seeking medical treatment because of something they have seen in this clinical case. Full procedure is not shown. Certain sequences have been cut.