

Immediate provisionalization of a central incisor

Arturo Llobell
Spain



Arturo Llobell

Patient

40 years, female

Clinical situation

Failing endodontic treatment of a central incisor

Surgical solution

Extraction site, immediate NobelActive® TiUltra™ implant placement, minor bone grafting with creos™ xenogain, SnapTemp abutment

Restorative solution

Zirconia crown with layered porcelain veneer only in the buccal aspect

Surgery date

April 2019

Total treatment time

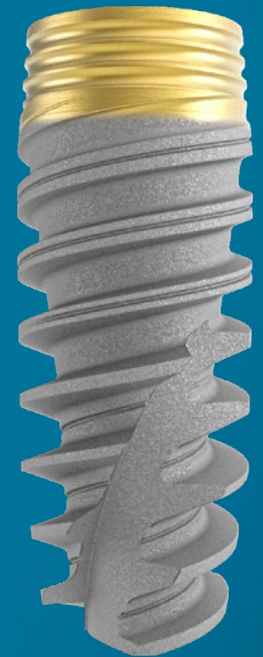
3 months

Tooth position

11

A hopeless central incisor had to be extracted. A NobelActive® TiUltra™ implant was placed immediately with SnapTemp abutment and immediate provisionalization.

Clinical outcome 5 months after implant placement shows stable and healthy soft and hard tissues.



Initial clinical situation

Surgical procedure

Restorative procedure

Outcome



Initial clinical situation.

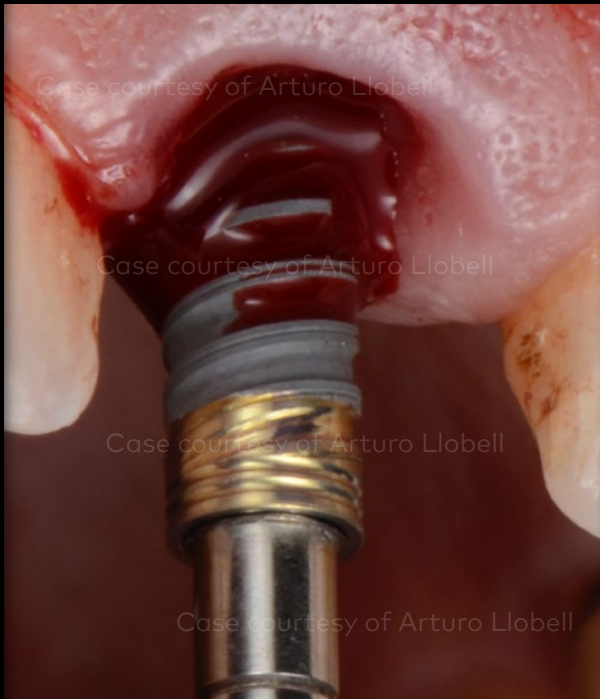
Radiograph and CBCT showing failing endodontic and restorative treatment. Patient refused orthodontic forced eruption treatment options.

Initial clinical situation

Surgical procedure

Restorative procedure

Outcome



Blood being pulled along the threads of the hydrophilic TiUltra™ surface during implant placement.

Immediate placement of NobelActive® TiUltra™ 3.5 x 13 mm implant in a fresh extraction socket.

Initial clinical situation



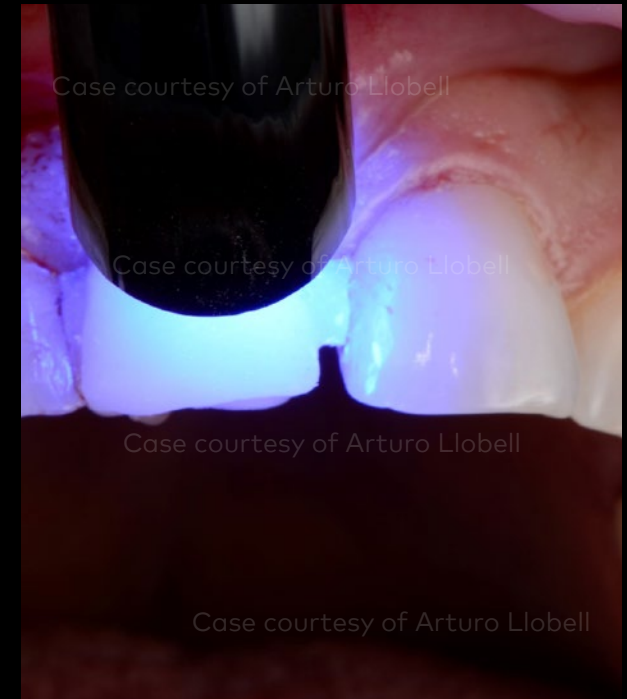
Bone preservation with creos™ xenogain.

Surgical procedure



SnapTemp abutment in place.

Restorative procedure



Curing of the resin during temporary provisionalization.

Outcome

Initial clinical situation

Surgical procedure

Restorative procedure

Outcome



Temporary provisional in place at the day of surgery.

Radiograph at the day of surgery.

Initial clinical situation

Surgical procedure

Restorative procedure

Outcome



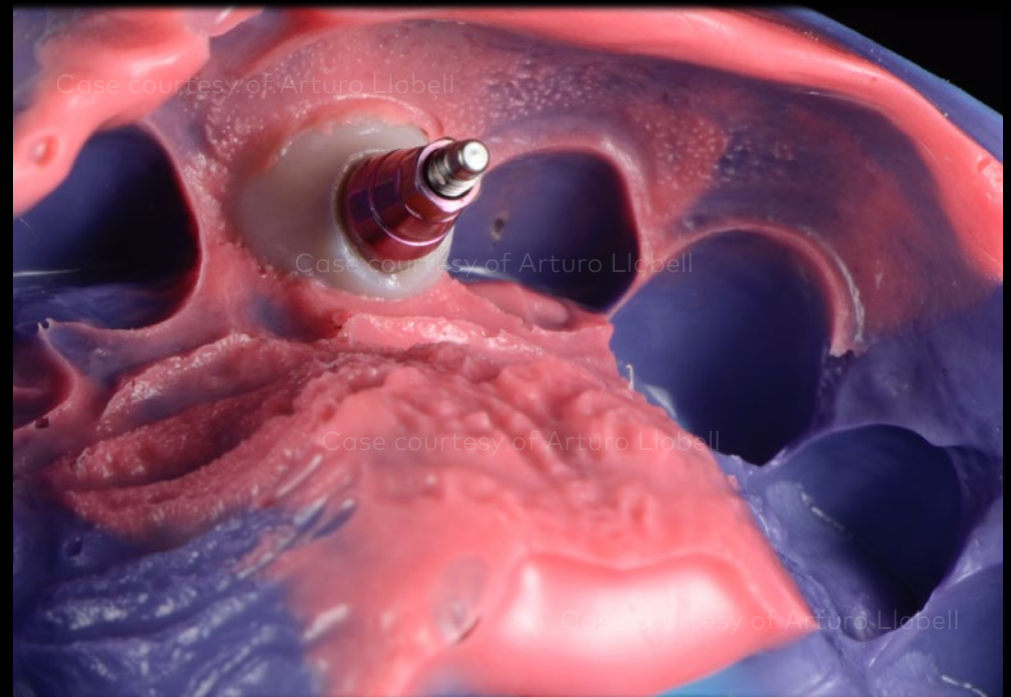
Customized impression coping.

Initial clinical situation

Surgical procedure

Restorative procedure

Outcome



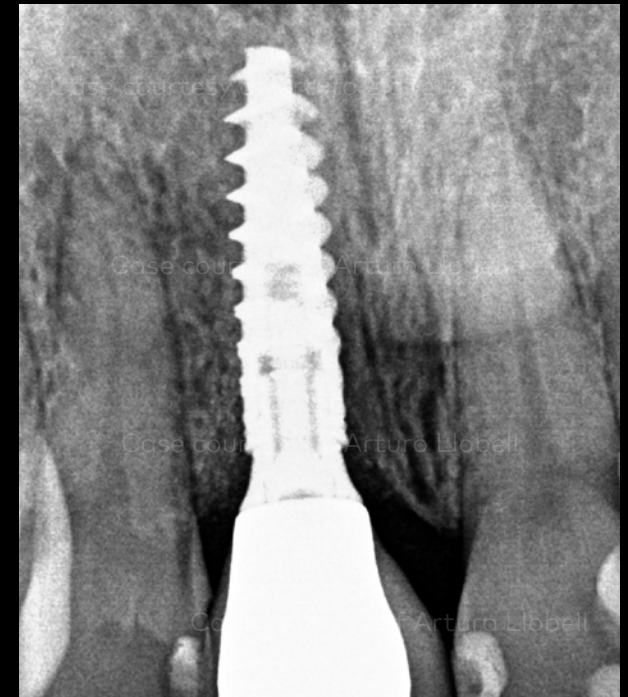
Final impression utilizing the customized impression coping in order to translate the emergence profile to the future final restoration.

Initial clinical situation

Surgical procedure

Restorative procedure

Outcome



Clinical situation 5 months after implant placement.

Radiograph at 5-month follow-up.

Case courtesy of Dr. Arturo Llobell

