



Pre-milled Titanium Abutment BLANK

Product overview



Pre-milled Titanium Abutment Blanks

15
Uni

35
Uni

(for 3.0 platform)



Connection	CC				External hex			Tri-channel**		
Platform	3.0	NP	RP	WP	NP	RP	WP	NP	RP	WP
Diameter Ø 10 mm	TRM60.068	TRM60.041	TRM60.042	TRM60.069	TRM60.001	TRM60.002	TRM60.003	TRM60.004	TRM60.005	TRM60.006
Diameter Ø 14 mm	–	TRM64.041	TRM64.042	TRM64.069	–	–	–	–	TRM64.005	TRM64.006
Screw	37890	37891	37892	37892	29282	29283	29284	36818	29475	29475
Screwdriver	Unigrip™	Unigrip™	Unigrip™	Unigrip™	Unigrip™	Unigrip™	Unigrip™	Unigrip™	Unigrip™	Unigrip™
Lab Screw	36805	37894	37895*	37895*	37894	37895*	31169	31170	29293*	29293*
Elos Accurate™ Scanbodies	IO 2B-D SA	IO 2B-A SA	IO 2B-B SA	IO 2B-C SA	IO 6A-A	IO 6A-B	IO 6A-C	IO 2A-A	IO 2A-B	IO 2A-C
Elos Accurate™ Scanbodies Kit	IO 2B SA Kit				IO 6A Kit			IO 2A Kit		
Replica for IOS - Elos Accurate™ Analog	PMA-NBA30-1	PMA-NBA35-1	PMA-NBA43-1	PMA-NBA60-1	PMA-BRA35-1	PMA-BRA41-1	PMA-BRA51-1	PMA-NBR35-1	PMA-NBR43-1	PMA-NBR50-1
Replica for IOS - Nobel Biocare	38188	38189	38190	38191	–	–	–	–	–	–
Insertion tool	38200	38201	38203	38204	–	–	–	–	–	–
Plaster model implant analog	36791	36697	36698	37879	31158	31159	31160	29498	29500	29502
Protection analog	36804*	38855*	38856*	38857*	29116*	29117*	29118*	29119*	29120*	29121*

* 5/pkg

** Not compatible with the ZirkonZahn® holder

All pre-milled titanium abutment blanks are co-packed with the clinical screw.

Pre-milled Titanium Abutment Blanks Nobel Biocare N1™

20
O-Mini



Connection	TCC	
Platform	NP	RP
Diameter Ø 10 mm	301511	301512
Screw	300968	300969
Screwdriver	Omnigrip™ Mini	Omnigrip™ Mini
Lab Screw	300972	300973
IOS / desktop scanbody	300976	300977
IOS analog	300964	300965
IOS insertion tool	300966	300966
Plaster model implant analog	300962	300963

All-pre-milled titanium abutment blanks Nobel Biocare N1™ are co-packed with the clinical screw.

Information on CAM and Holders

COMPATIBLE CAM SOFTWARES*:

vhf, imes-icore®, hyperDENT®, SUM3D (Millbox), WORKNC, DentalSoftworks, PicaSoft

If you are using vhf or imes-icore® CAM, please note that an additional fee may apply to unlock the software.

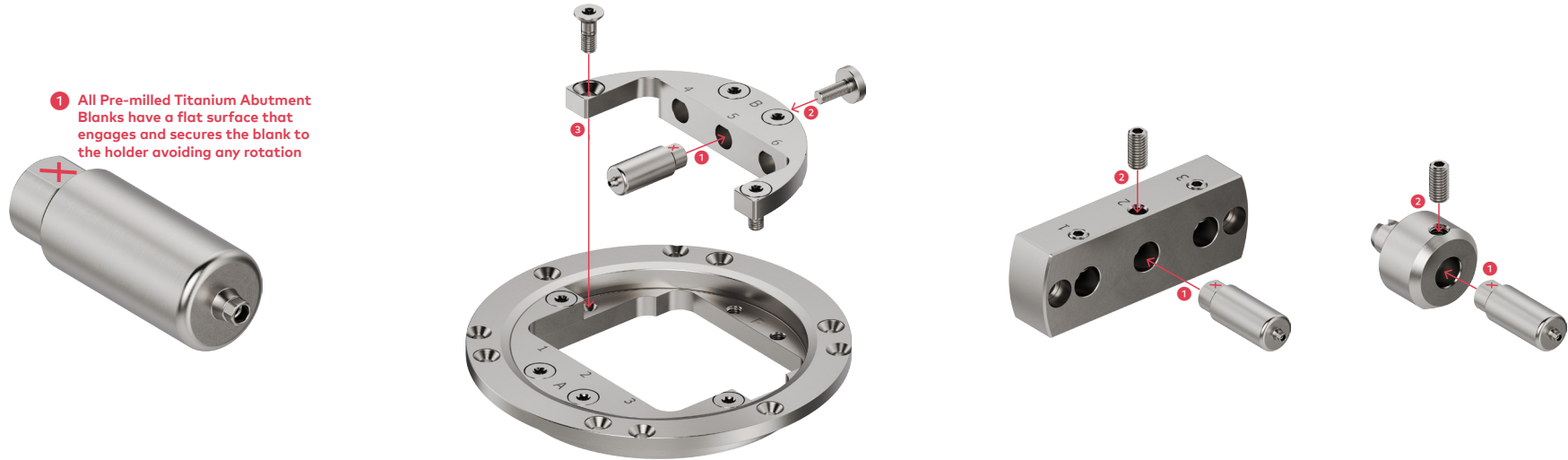
COMPATIBLE HOLDERS:

For compatible holders and milling machines, please refer to the next pages.

In order to use the standard 98 mm disc holder it is required that the machine has a touch probe or way to self-calibrate the positioning of the holder.

* Not all CAM softwares and milling machines are available for pre-milled titanium abutment blanks Nobel Biocare N1™. Please check with your sales rep or customer care for more details.

Assembly Instructions



Modular screw retained holder, allowing the outer section of the holder to remain fixed in the milling machine during blank change over.

All components are laser-marked for easy identification.

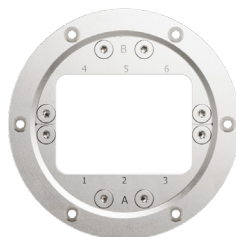


Holder article	TRMHLSTD*
Machine type	For standard 98 mm disc machines
Compatible machine	Any milling machine with a 98 mm disc holder

Components:

- Holder (Outer & Inner holder (A&B))
- 9 screws (8 to secure the inner holder, 1 spare)
- 7 screws (6 to secure the blank in the inner holder, 1 spare)
- 1 calibration blank (blue anodized)
- 1 tool to tighten the screws

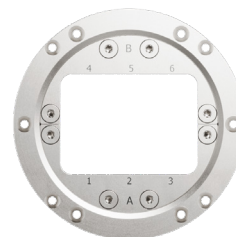
* In order to use the standard 98 mm disc holder it is required that the machine has a touch probe or way to self-calibrate the positioning of the holder.



Holder article	TRMHLDIMES
Machine type	Imes-Icore®
Compatible machine	Coritec 245i touch
	Coritec 250i touch
	Coritec 350i
	Coritec 350i Loader
	Coritec 450i
	Coritec 550i
	Coritec 650i
	Coritec 650i Loader

Components:

- Holder (Outer & Inner holder (A&B))
- 9 screws (8 to secure the inner holder, 1 spare)
- 7 screws (6 to secure the blank in the inner holder, 1 spare)
- 1 calibration blank (blue anodized)
- 1 tool to tighten the screws



Holder article	TRMHLDYENA
Machine type	Yenadent®
Compatible machine	D6
	D15
	D43N

Components:

- Holder (Outer & Inner holder (A&B))
- 9 screws (8 to secure the inner holder, 1 spare)
- 7 screws (6 to secure the blank in the inner holder, 1 spare)
- 1 calibration blank (blue anodized)
- 1 tool to tighten the screws

Additional milling machines may be available. For more details please contact your customer support.



Holder article	TRMHLDVHF
Machine type	For VHF®
Compatible machine	VHF® S1
	VHF® S2
	VHF® S5
	VHF® K5

- Components:
- Holder (Outer & Inner holder (A&B))
 - 9 screws (8 to secure the inner holder, 1 spare)
 - 7 screws (6 to secure the blank in the inner holder, 1 spare)
 - 1 calibration blank (blue anodized)
 - 1 tool to tighten the screws



Holder article	TRMHLDVHF5
Machine type	For VHF®
Compatible machine	VHF® R5

- Components:
- Holder (Outer & Inner holder (A&B))
 - 9 screws (8 to secure the inner holder, 1 spare)
 - 7 screws (6 to secure the blank in the inner holder, 1 spare)
 - 1 calibration blank (blue anodized)
 - 1 tool to tighten the screws



Holder article	TRMHLDVHFN4
Machine type	For VHF®
Compatible machine	VHF® N4

- Components:
- Holder
 - 2 screws (to secure the holder)
 - 3 screws (to secure the blank in the holder)
 - 1 tool to tighten screws to secure the blank in the holder
 - 1 tool to tighten screws to secure the holder in the machine

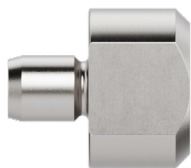


Holder article	TRMHLDVHFZ4
Machine type	For VHF®
Compatible machine	VHF® Z4

- Components:
- Holder
 - 2 screws (to secure the holder)
 - 3 screws (1 to secure the blank in the holder, 2 spare)
 - 1 tool to tighten the blank in the holder

Additional milling machines may be available. For more details please contact your customer support.

Holder for Pre-milled Titanium Abutment Blanks

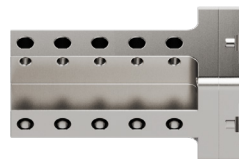


Holder article	TRMHLDZZ*
Machine type	Adaptors for for ZirkonZahn® holders
	M1 Abutment
Compatible machine	M1 wet heavy metal
	M5 heavy metal
	M6 wet heavy metal

Components:

- 3 holders for premilled blanks
- 9 screws in total. 1 tightened with the holder and 6 as spare parts.
- 1 tool to tighten the screws

* Not compatible with blanks with tri-channel connection



Holder article	TRMHLD3R
Machine type	For machines with support/changer 3R
Compatible machine	D14P

Components:

- Holder
- 25 screws (20 to secure the blank, 5 spare screws)
- 1 tool to tighten the screws

Additional milling machines may be available. For more details please contact your customer support.

Screwdrivers

Unigrip™

Unigrip™ Screwdriver Machine

20 mm	29151
25 mm	29152
30 mm	29153
35 mm	29154



Unigrip™ Screwdriver Manual

20 mm	29148
28 mm	29149
36 mm	29150



Omnigrip™ Mini

Omnigrip™ Mini Screwdriver Machine

20 mm	300852
28 mm	300853
36 mm	300854



Omnigrip™ Mini Screwdriver Manual

20 mm	300855
36 mm	300856



Tools

Elos Accurate™ Analog insertion tool and IO driver

Elos Accurate™ Analog Insertion Pin	PMA-AIP-2
Elos Accurate™ Analog Insertion Screw	PMA-AIS-5
Elos Accurate™ Analog Pliers	PMA-AIT-1
Elos Accurate™ IO driver – mini	C18512
Elos Accurate™ IO driver – short	C13485
Elos Accurate™ IO driver – long	C13048

Compatible softwares*



* DentalWings not available for Pre-milled Titanium Abutment Blanks Nobel Biocare N1™.

Other tools - Handle for Protection Analogs

Handle for Protection Analogs	29122
-------------------------------	-------

Other tools – Manual Torque Wrench

Manual Torque Wrench Prosthetic	29165
Manual Torque Wrench Adapter	29167



Manual Torque Wrench Prosthetic Nobel Biocare N1™	301082
---	--------



For availability of compatible software and download of local production DME's, please go to nobelbiocare.com/local-production

ORDER ONLINE

Order the complete range of our implants and prefabricated prosthetics 24 hours a day through the Nobel Biocare online store.

nobelbiocare.com/store

ORDER BY PHONE

Call our customer service team, or contact your sales representative.

LIFETIME WARRANTY

On all Nobel Biocare implants including prefabricated prosthetic components. For further information visit:

nobelbiocare.com/warranty



88409 GB 2301 Printed in the EU © Nobel Biocare Services AG, 2023. All rights reserved. Distributed by: Nobel Biocare. Disclaimer: Nobel Biocare, the Nobel Biocare logotype and all other trademarks are, if nothing else is stated or is evident from the context in a certain case, trademarks of Nobel Biocare. Please refer to nobelbiocare.com/trademarks for more information. Product images are not necessarily to scale. All product images are for illustration purposes only and may not be an exact representation of the product. Some products may not be regulatory cleared/released for sale in all markets. Please contact the local Nobel Biocare sales office for current product assortment and availability. Caution: Federal (United States) law or the law in your jurisdiction may restrict this device to sale by or on the order of a dentist or a physician. See Instructions For Use for full prescribing information, including indications, contraindications, warnings and precautions. All Titanium Blanks with Internal Conical Connection, External Hex and Internal Tri-Channel and holders are manufactured by Terrats Medical S.L, C/Mogoda 75-99, 08210 Barberà del V., Spain and distributed by Nobel Biocare Services AG. Elos Accurate™ Position Locators, Elos Accurate™ Position Locator Kits, Replica for IOS Elos Accurate™ Analog and Elos Accurate™ Analog insertion tool and IO driver are manufactured by Elos Medtech Pínel A/S, Engvej 33, 3330 Gørlose, Denmark and distributed by Nobel Biocare Services AG.