

Excellent prosthetic survival and low complication rate with 463 CAD/CAM NobelProcera® abutments

Clinical relevance

High survival

98.1% prosthetic survival rate at up to 6.4 years.

Few complications

1.5% technical complications repaired intraorally or after temporary removal.

High satisfaction

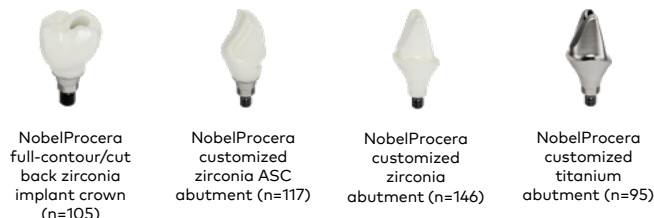
Patients and clinicians were highly satisfied with the restoration.



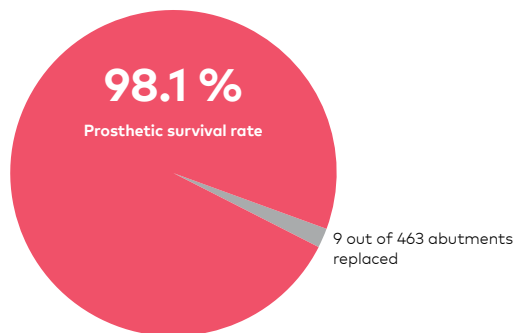
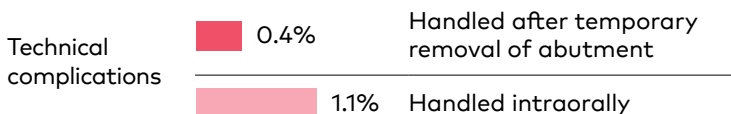
Presented by Dr. Ian Lane at EAO 2022, Geneva
 Factors associated with prosthetic complications with individualized abutments: Real-world data. *Giacomo Fabbri; Tristan Staas; Ian Lane; Alberto Pitino; Edoardo Fossati; Ali Aghasadeh; Florian Kübler*. Volume 33, Issue S24 Special Issue: 29th Annual Scientific Meeting of the European Association for Osseointegration

The results

- 463 individualized NobelProcera abutments with 4 different designs: 98.1% prosthetic survival rate and only 1.5% technical complications after up to 6.4-year follow-up.
- 96.5% patients and 98.3% clinicians were satisfied with the restoration.
- Implant connection type did not associate with the risk of prosthetic failure.



Technical complications recorded in the study

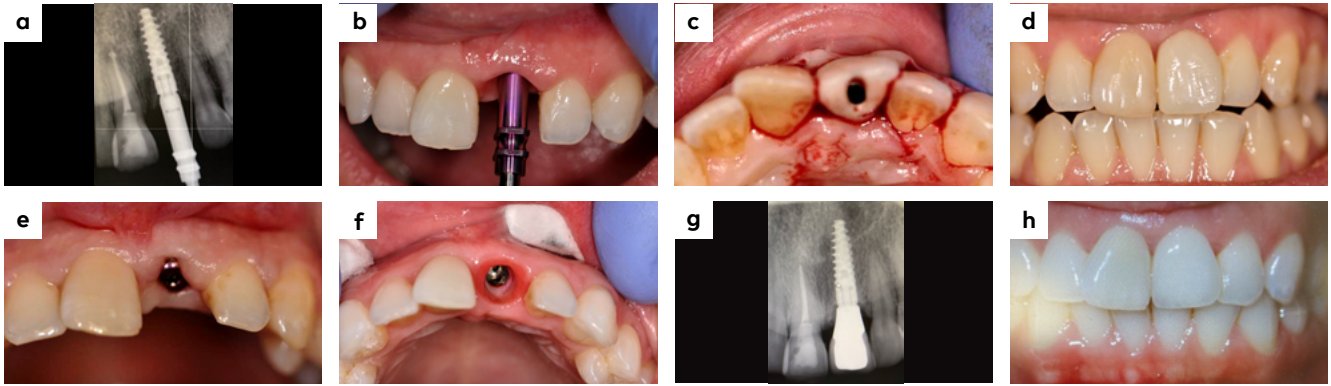


Study design

Retrospective, multi-center clinical study

| | | | | |
|--|--------------|---|----------------------------|-------------------------|
| | | | | |
| Immediate, early and delayed loading. Single tooth or partially edentulous | 290 patients | 463 TiUnite implants with different connections | 463 NobelProcera abutments | 3.7±2.7 years follow-up |

Sample clinical case



Images courtesy of Dr. Ian Lane, UK

A 34-year-old female patient, non-smoker, with a missing central incisor in maxilla (a, b) radiograph and clinical view at implant insertion, narrow platform NobelActive 15 mm, (c, d) immediate temporary crown and intraoral view 32 weeks post-op, (e, f) healing abutment and the resulting sculptured tissue at 3 months post-op, (g, h) radiography and clinical view at 7-year follow-up.

Authors' conclusion

"NobelProcera individualized abutments offer excellent prosthetic survival and a low rate of complications while delivering patient and clinician satisfaction with the esthetics of the restoration."

More to explore



Download the
EAO poster



Solving problems
of implant
abutment screw
loosening



[nobelbiocare.com/
nobelprocera-restorations](https://nobelbiocare.com/nobelprocera-restorations)

GMT 84905 GB 2305 © Nobel Biocare Services AG, 2023. All rights reserved. Nobel Biocare, the Nobel Biocare logotype and all other trademarks are, if nothing else is stated or is evident from the context in a certain case, trademarks of Nobel Biocare. Please refer to nobelbiocare.com/trademarks for more information. Product images are not necessarily to scale. All product images are for illustration purposes only and may not be an exact representation of the product. Disclaimer: Some products may not be regulatory cleared/released for sale in all markets. Please contact the local Nobel Biocare sales office for current product assortment and availability. See Instructions For Use for full prescribing information, including indications, contraindications, warnings and precautions

**Nobel
Biocare™**