

N1™ implant system

Immediate implant
placement and loading
with the Nobel Biocare N1™
system

Renaud Noharet





Dr. Renaud Noharet

Patient

30 years old, female

Clinical situation

Crack in radicular part of second molar in upper jaw
(FDI system 15)

Surgical solution

Immediate placement and immediate loading with
N1 implant system

Restorative solution

Universal Base on N1 Base

Surgery date

September 9, 2020

Total treatment time

1 year

Tooth position

15 (FDI system)



Initial clinical situation

Treatment planning

Surgical procedure

Restorative procedure



Intraoral situation



Initial X-ray

Initial clinical situation

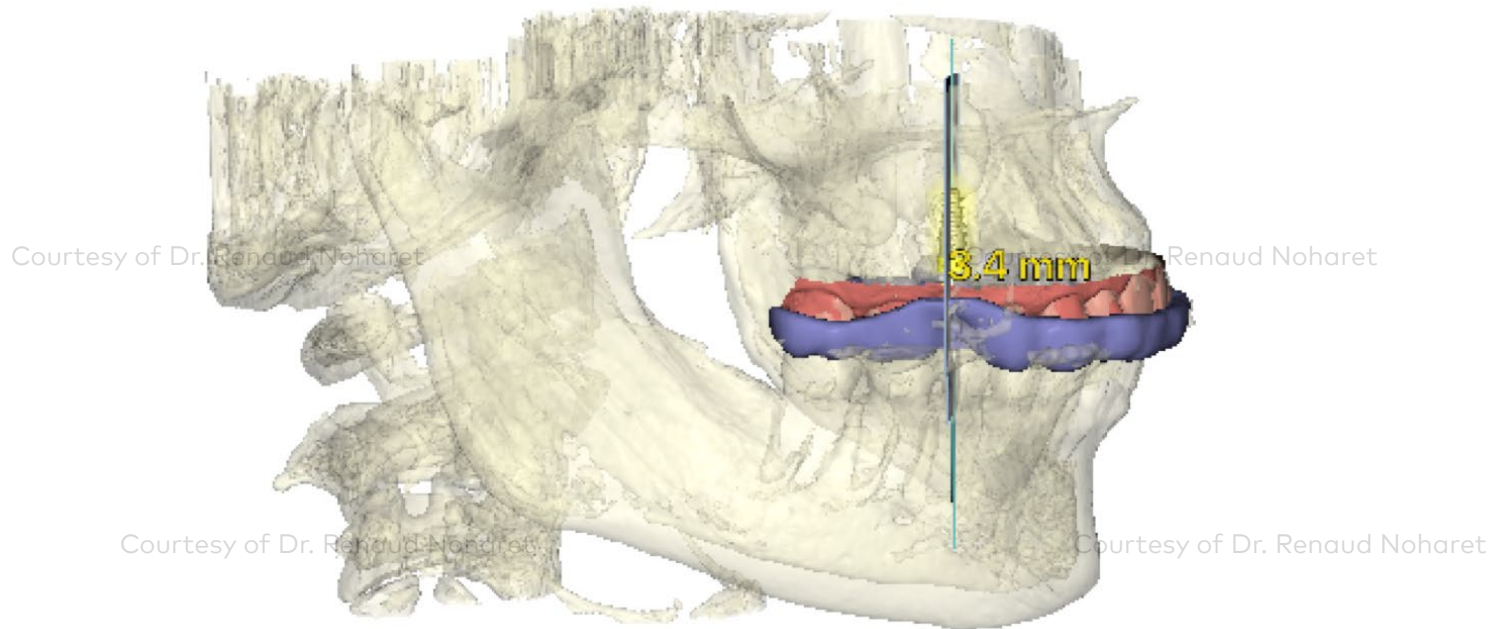
Treatment planning

Surgical procedure

Restorative procedure

Courtesy of Dr. Renaud Noharet

Courtesy of Dr. Renaud Noharet



Courtesy of Dr. Renaud Noharet



Courtesy of Dr. Renaud Noharet

Planning with DTX Studio™ Implant.
Intraoral scan from 3shape TRIOS®.
Guide from Nobel Biocare

Initial clinical situation

Treatment planning

Surgical procedure

Restorative procedure



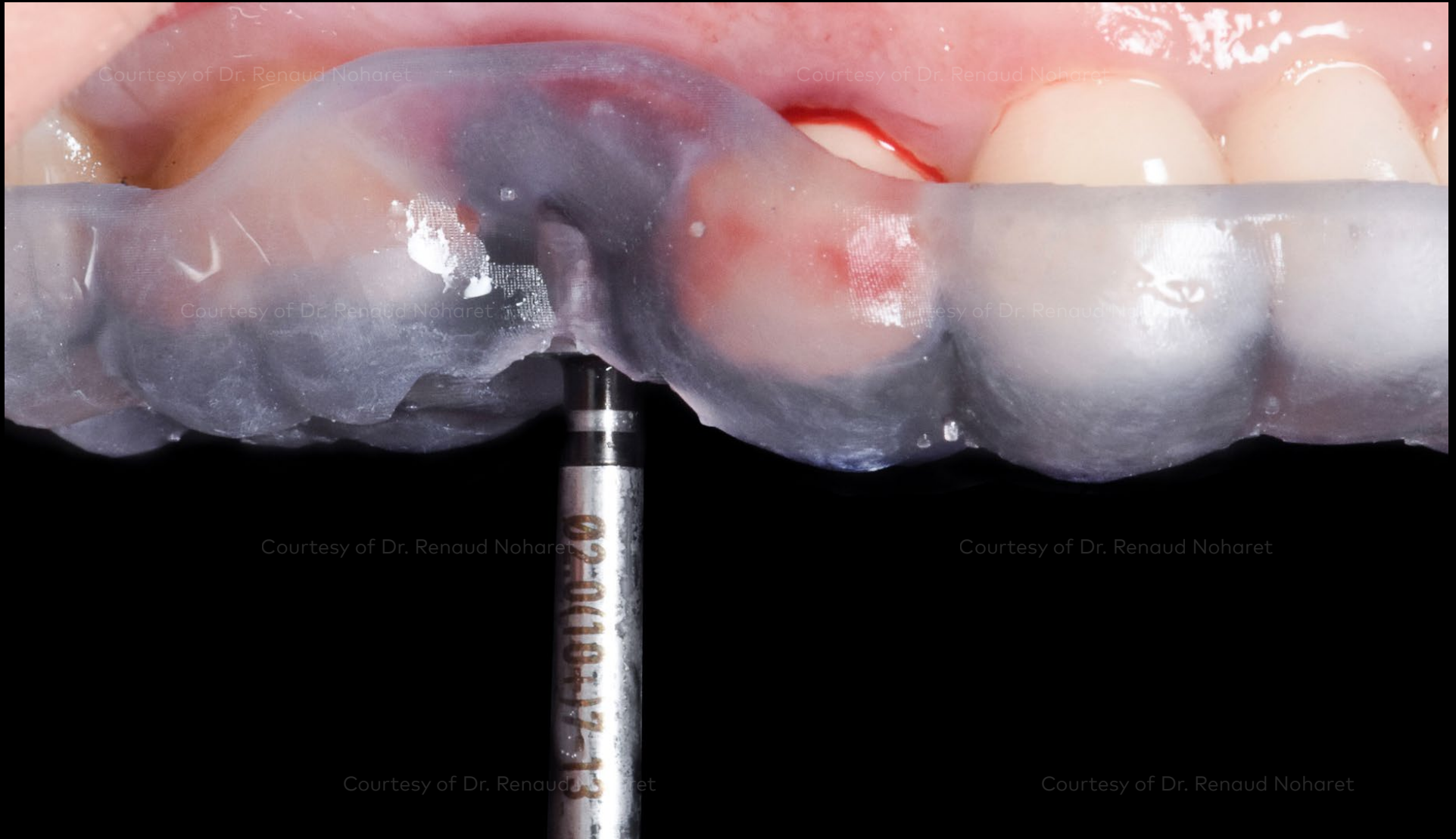
Extraction socket (tooth position 15 FDI system)

Initial clinical situation

Treatment planning

Surgical procedure

Restorative procedure



First drill (2 mm diameter) above the guide

Initial clinical situation

Treatment planning

Surgical procedure

Restorative procedure



OsseoDirector™ to define the final implant position. The sharp design of the OsseoDirector tip supports bone engagement and the tapered body allows changes in direction while cutting the pilot osteotomy.

Initial clinical situation

Treatment planning

Surgical procedure

Restorative procedure



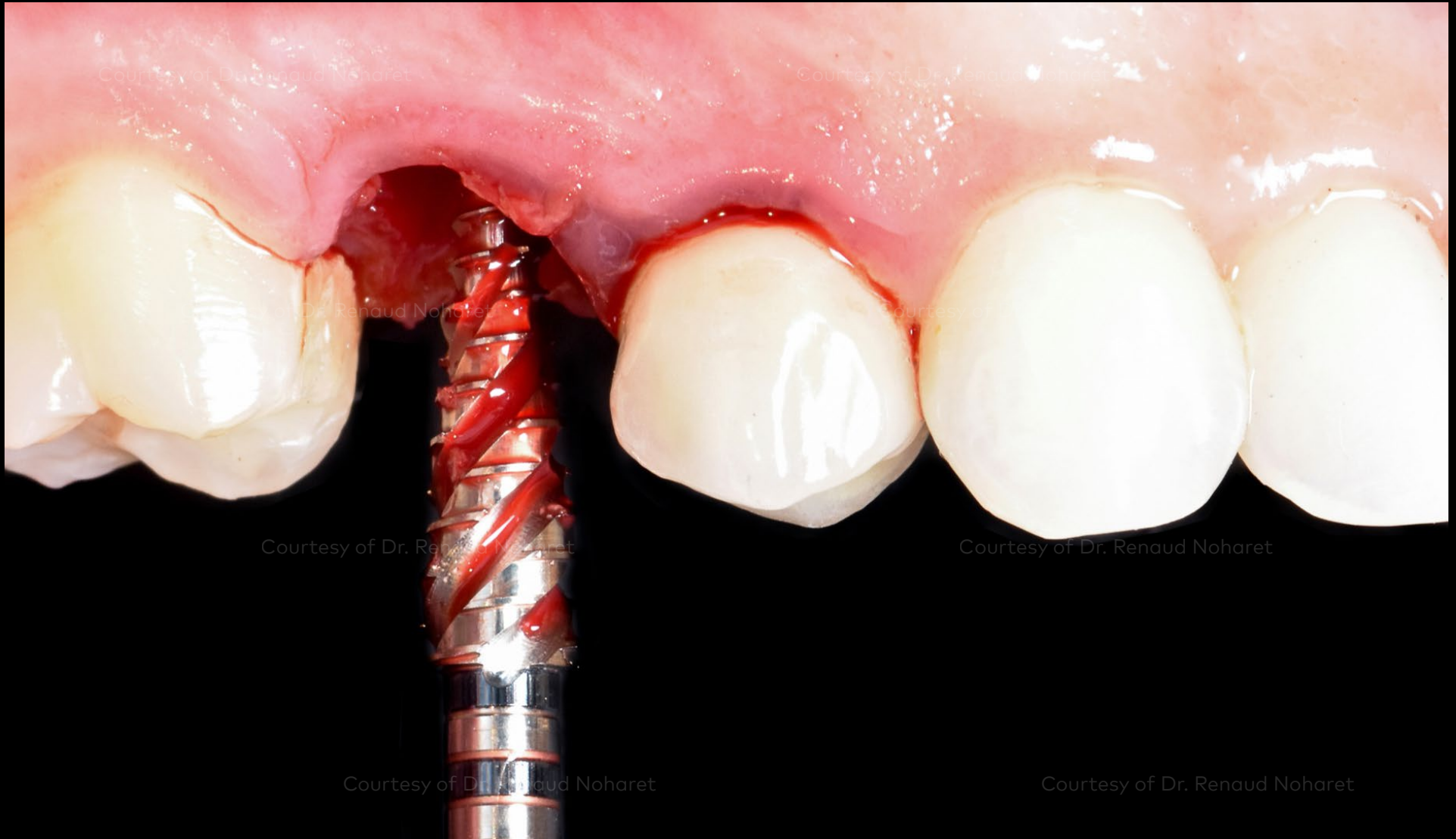
OsseoShaper™ site preparation tool before its insertion. It operates at low speed (50 rpm) with minimized noise and vibration.

Initial clinical situation

Treatment planning

Surgical procedure

Restorative procedure



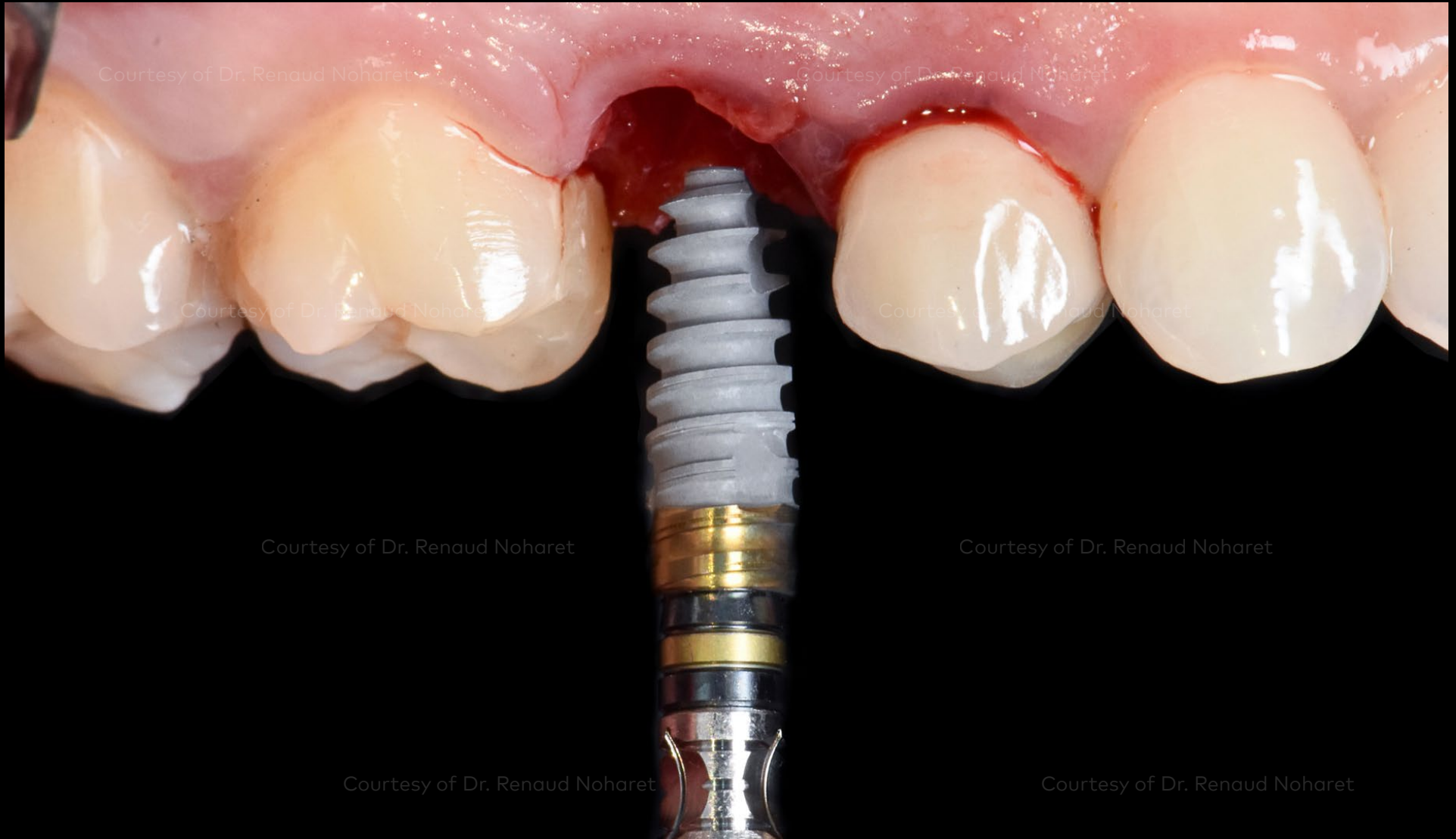
OsseoShaper freshly removed from the site. Note the bone chips and osseous coagulum are retained in the osteotomy and threads of the instrument.

Initial clinical situation

Treatment planning

Surgical procedure

Restorative procedure



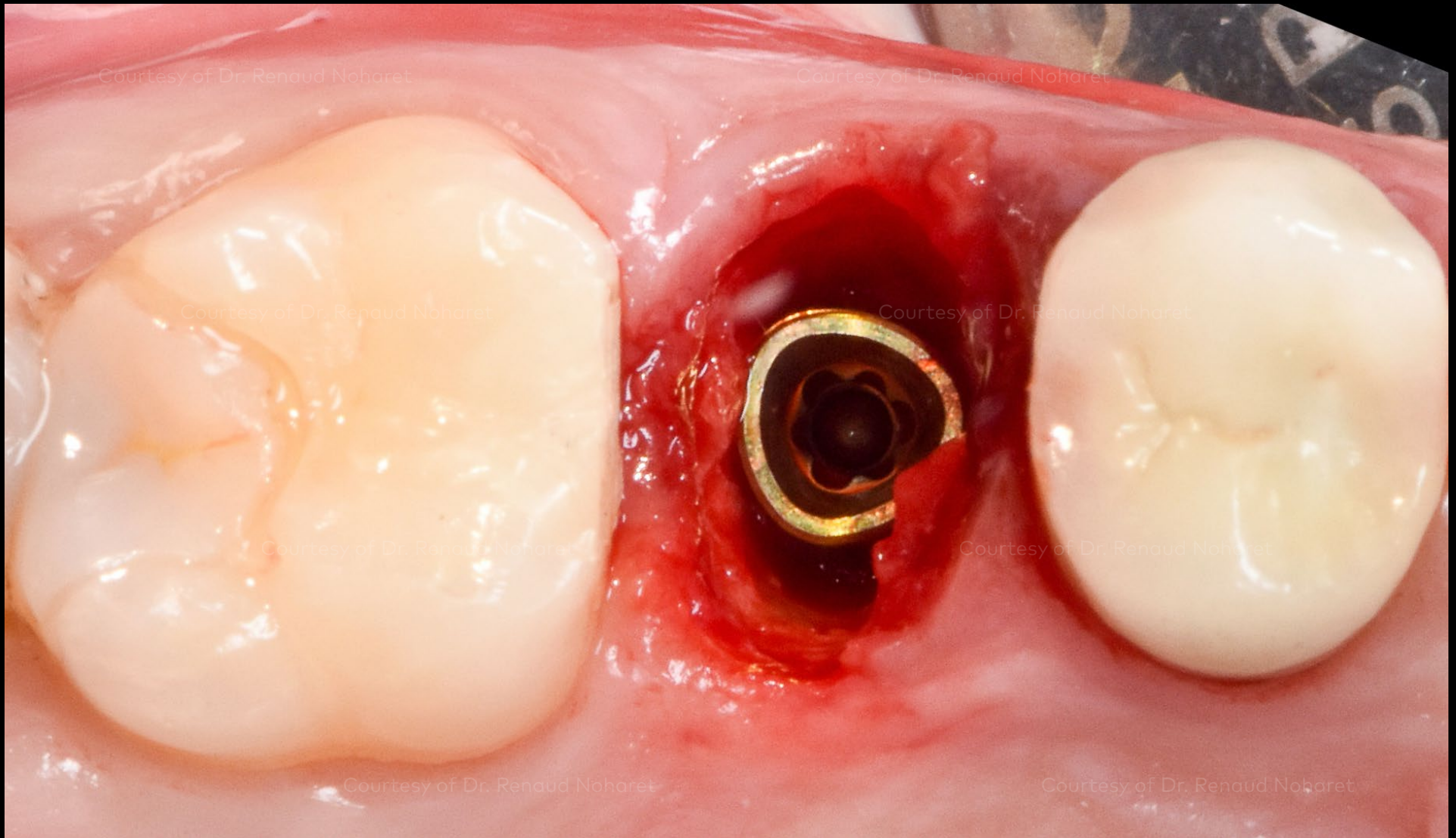
N1 RP 4 mm

Initial clinical situation

Treatment planning

Surgical procedure

Restorative procedure



Occlusal view after implant insertion. The flat side of the trioval implant neck faces buccally.

Initial clinical situation

Treatment planning

Surgical procedure

Restorative procedure



Local impression for immediate restoration

Initial clinical situation

Treatment planning

Surgical procedure

Restorative procedure



Sealing of socket using creos™ xenogain

Initial clinical situation

Treatment planning

Surgical procedure

Restorative procedure



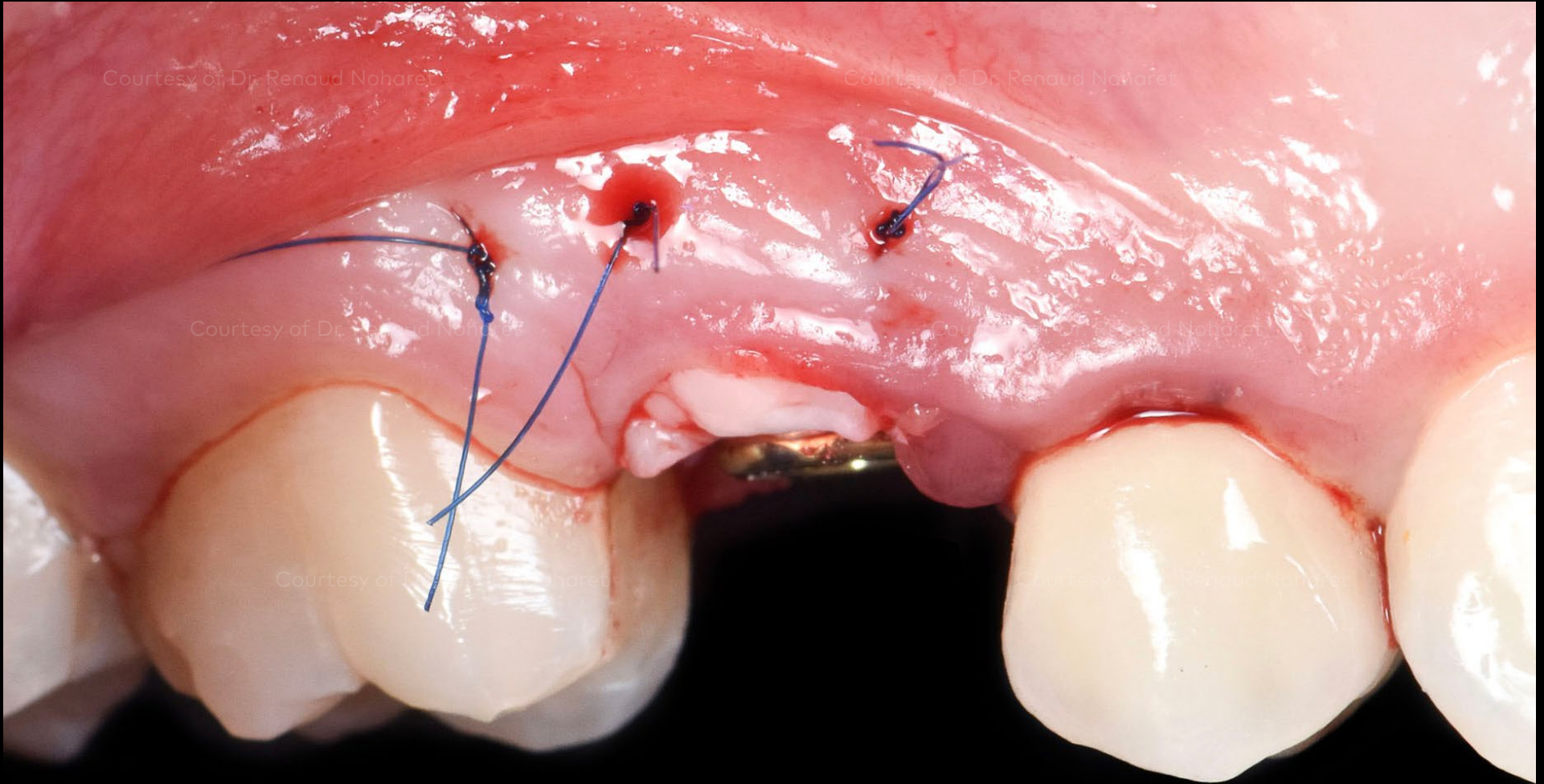
Partial incision to create pocket for connective tissue graft

Initial clinical situation

Treatment planning

Surgical procedure

Restorative procedure



Courtesy of Dr. Renaud Noharet

Courtesy of Dr. Renaud Noharet

Connective tissue graft with sutures

**Initial clinical
situation**

**Treatment
planning**

**Surgical
procedure**

**Restorative
procedure**



Courtesy of Dr. Renaud Noharet

Courtesy of Dr. Renaud Noharet

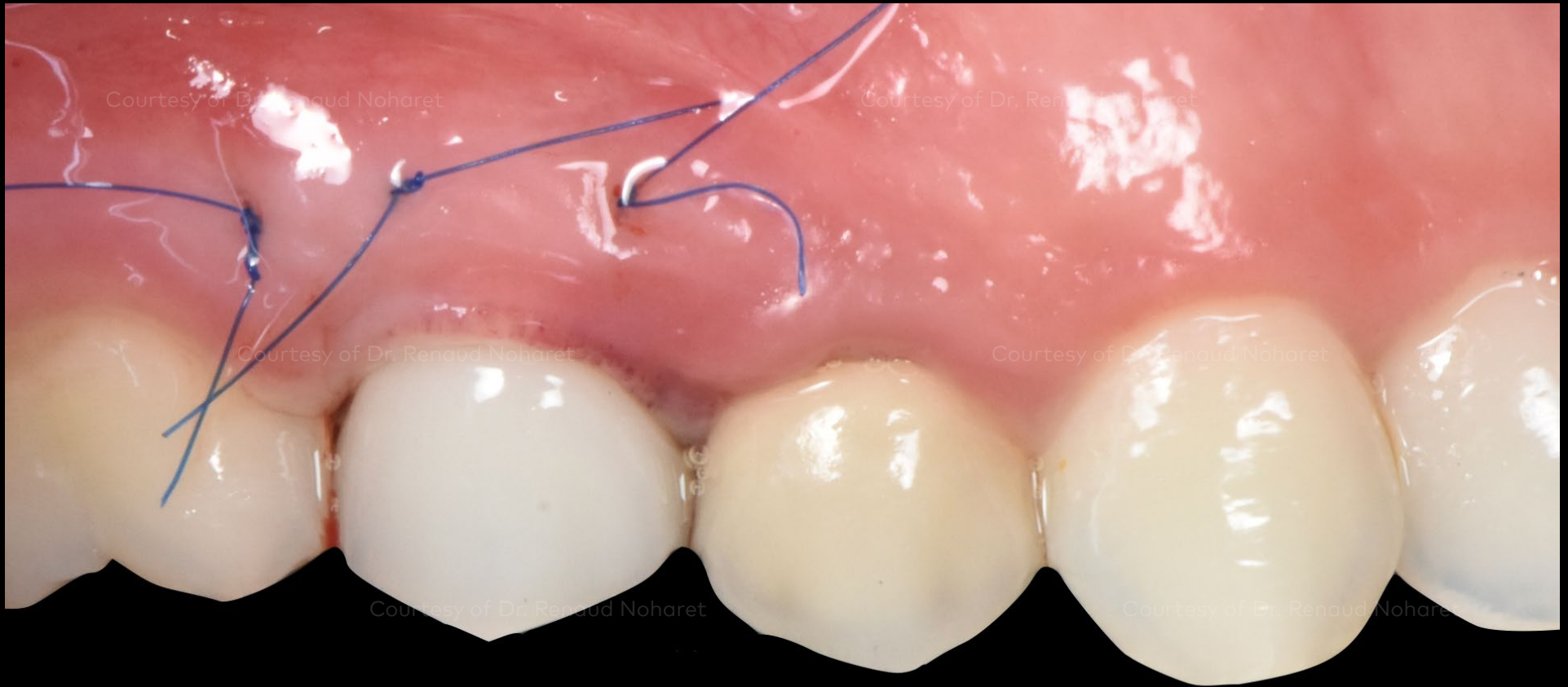
Provisional on printed model

Initial clinical situation

Treatment planning

Surgical procedure

Restorative procedure



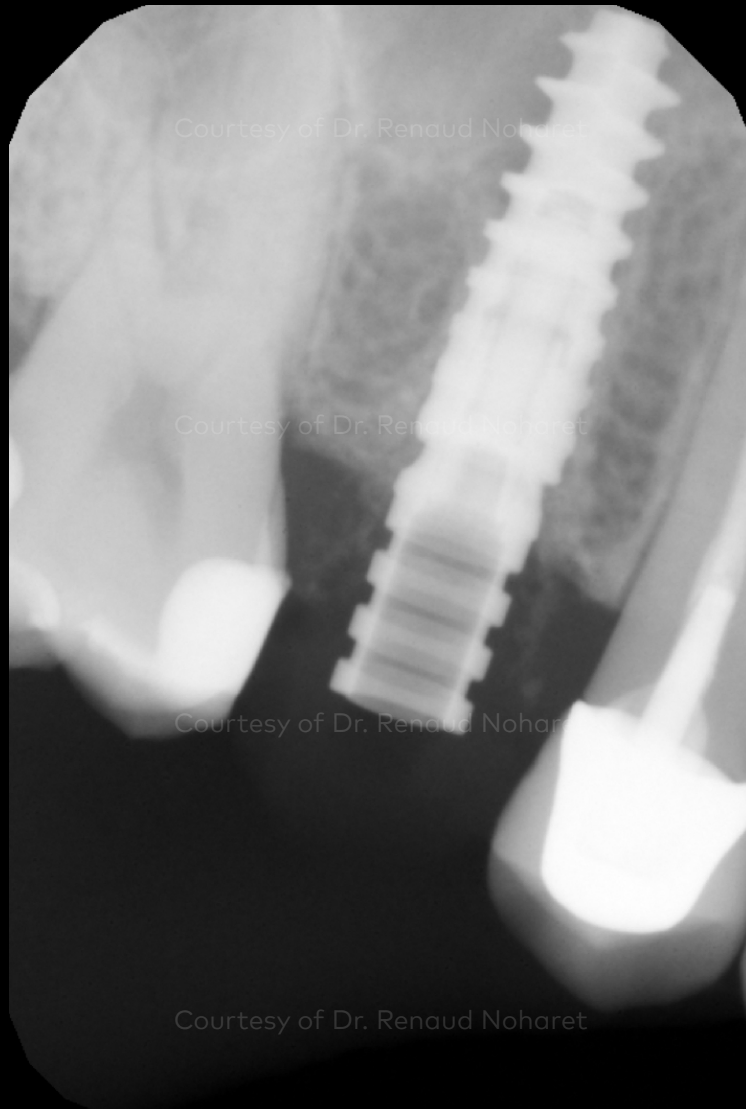
Provisional in patient's mouth

Initial clinical situation

Treatment planning

Surgical procedure

Restorative procedure



X-ray: Provisionalization at the day of surgery

Initial clinical situation

Treatment planning

Surgical procedure

Restorative procedure



Individualized impression coping

**Initial clinical
situation**

**Treatment
planning**

**Surgical
procedure**

**Restorative
procedure**



Impression

Initial clinical situation

Treatment planning

Surgical procedure

Restorative procedure



Excellent esthetic outcome and healthy soft tissue 6 months after surgery.

Initial clinical situation

Treatment planning

Surgical procedure

Restorative procedure



Picture 1: Occlusal view of implant level

Picture 2: Occlusal view of base N1

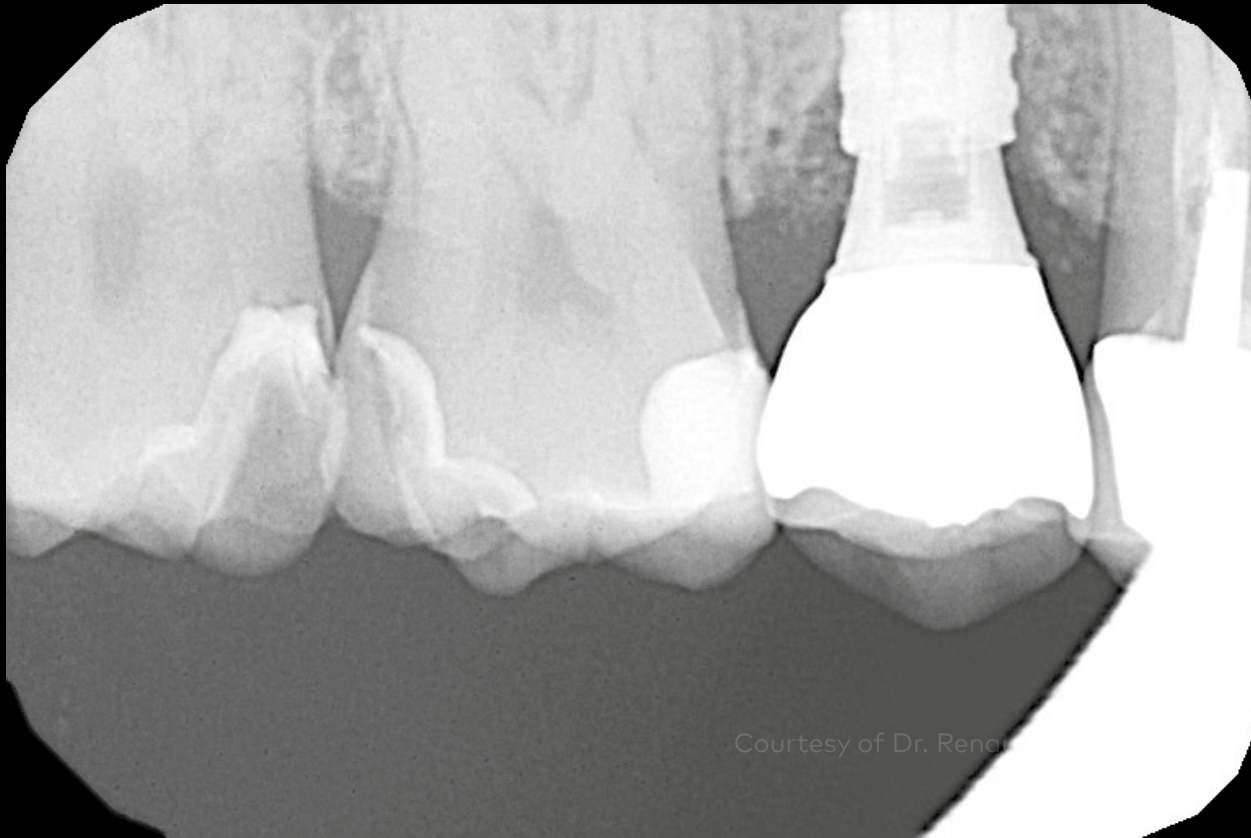
Picture 3: Occlusal view of final prosthesis

**Initial clinical
situation**

**Treatment
planning**

**Surgical
procedure**

**Restorative
procedure**



Courtesy of Dr. Renaud

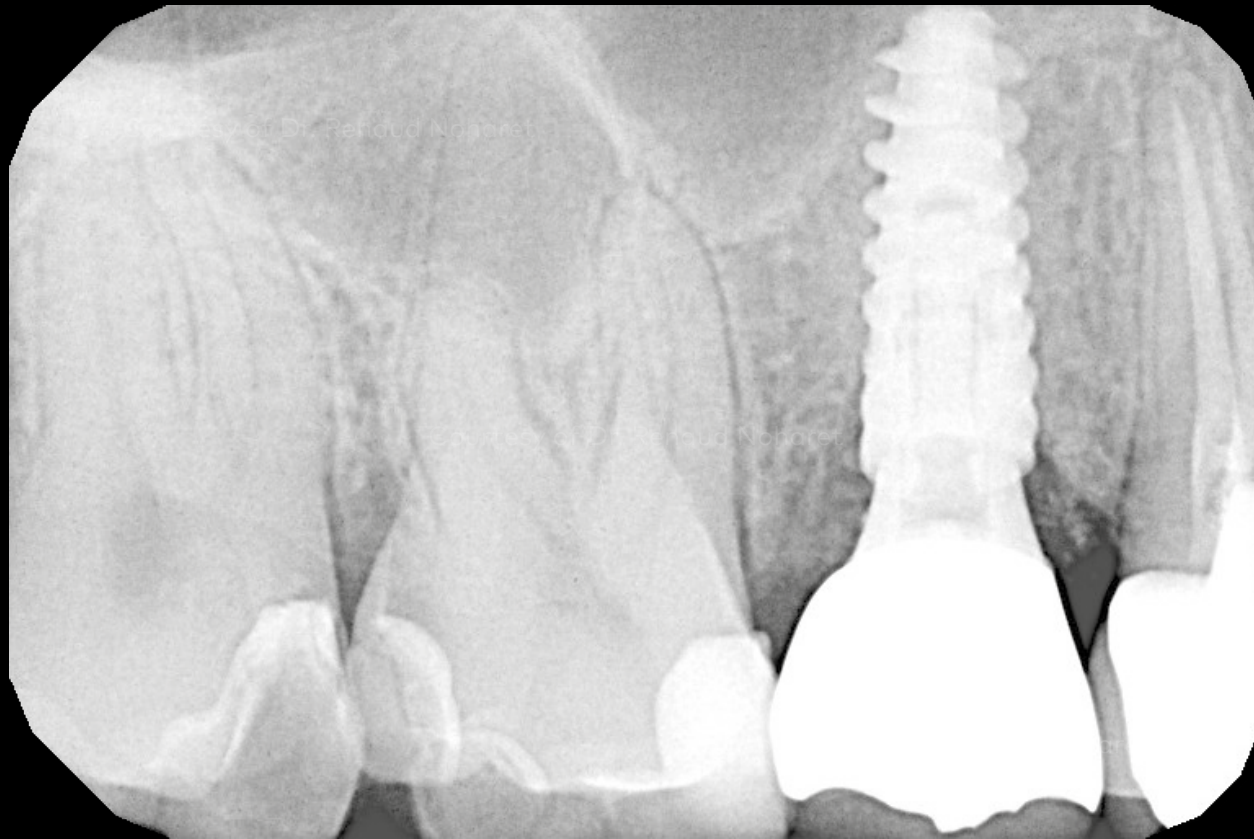
X-ray: Final restoration 7 months after surgery.

**Initial clinical
situation**

**Treatment
planning**

**Surgical
procedure**

**Restorative
procedure**



X-ray: Final
July 2021

Case courtesy of Dr. Renaud Noharet



GMT 80923 GB 2210 © Nobel Biocare Services AG, 2022. All rights reserved. Nobel Biocare, the Nobel Biocare logotype and all other trademarks are, if nothing else is stated or is evident from the context in a certain case, trademarks of Nobel Biocare. Please refer to nobelbiocare.com/trademarks for more information. Product images are not necessarily to scale. Disclaimer: Some products may not be regulatory cleared/released for sale in all markets. Please contact the local Nobel Biocare sales office for current product assortment and availability. For prescription use only. Caution: Federal (United States) law restricts this device to sale by or on the order of a licensed clinician, medical professional or physician. See Instructions For Use for full prescribing information, including indications, contraindications, warnings and precautions. Nobel Biocare does not take any liability for any injury or damage to any person or property arising from the use of this clinical case. This clinical case is not intended to recommend any measures, techniques, procedures or products, or give advice, and is not a substitute for medical training or your own clinical judgement as a healthcare professional. Viewers should never disregard professional medical advice or delay seeking medical treatment because of something they have seen in this clinical case. Full procedure is not shown. Certain sequences have been cut.