

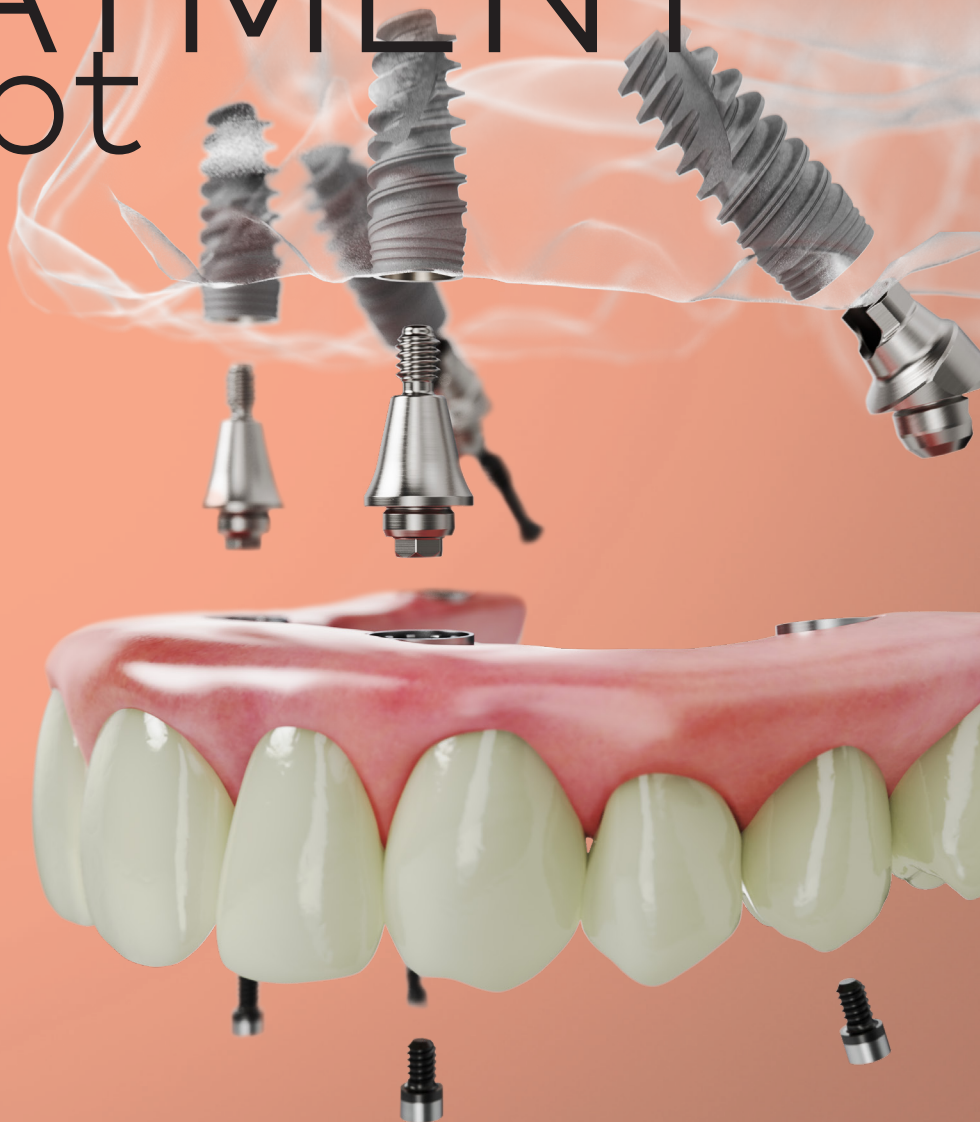
Product overview



# All-on-4®

## TREATMENT concept

with  
**NobelActive®**



# All-on-4® treatment concept with NobelActive®

## Product overview

### Immediate Function for high patient satisfaction

- Immediately loaded fixed provisional prosthesis early as the day of surgery.
- Immediate improvement in function, phonetics and esthetics.<sup>1</sup>
- Shorter treatment times and reduced costs compared with conventional implant treatment modalities.<sup>2</sup>

### Proven long-term solution

- High survival rates with up to 10 years' follow-up in the mandible and 5 years' in the maxilla.<sup>3,4</sup>
- Favorable bone levels for tilted and axial implants.<sup>5,6,7</sup>



### Reduced need for bone augmentation

Tilted posterior implants allow the use of longer implants, increasing bone-to-implant contact and avoiding bone grafting.<sup>8</sup>

### High stability with only four implants<sup>6</sup>

Tilted posterior implants can be anchored in better quality anterior bone. Tilting also improves support for the prosthesis by reducing cantilevers.<sup>9</sup>

# All-on-4® treatment concept

## Surgical and prosthetic components

### STERILE R NobelActive

Platform	Implant Ø	Length						
		7 mm	8.5 mm	10 mm	11.5 mm	13 mm	15 mm	18 mm
NP	3.5 mm		35221	34125	34126	34127	34128	35215
RP	4.3 mm		35223	34131	34132	34133	34134	35219
RP	5.0 mm		35225	34137	34138	34139	34140	35220
WP*	5.5 mm	37806	37807	37808	37809	37810	37811	

\*Cover screw included



TiUnite surface with grooves on the threads for enhanced osseointegration

### Multi-unit Abutments

		NP	RP	WP
	<b>Multi-unit Abutment Plus</b>			
	Height 1.5 mm	38878	38879	38880
	Height 2.5 mm	38881	38882	38883
	Height 3.5 mm	38884	38885	38886
	Height 4.5 mm		38887	
	<b>17° Multi-unit Abutment Plus<sup>1</sup></b>			
	Height 2.5 mm	38888	38889	38890
	Height 3.5 mm	38891	38892	38893
	<b>30° Multi-unit Abutment Plus<sup>1</sup></b>			
	Height 3.5 mm	38894	38895	
	Height 4.5 mm	38896	38897	

	NP	RP	WP
<b>Healing Cap Multi-unit<sup>2</sup></b>			
1/pkg	31145	31145	31145
5/pkg	29064	29064	29064
Wide 1/pkg	31146	31146	31146



#### Peace of mind

The warranty covers all Nobel Biocare implants including prefabricated prosthetic components. For further information visit [nobelbiocare.com/warranty](http://nobelbiocare.com/warranty)

#### Ideal for small spaces

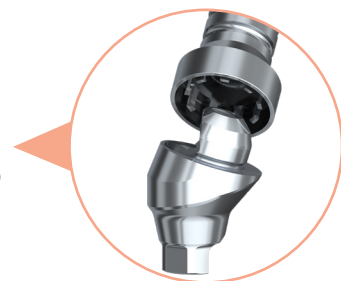
Short cone for limited interocclusal space.

#### Secure passive fit

Wide shoulder for easy positioning of the prosthetic restoration.

#### Easy handling

Each Multi-unit Abutment Plus is delivered with a pre-mounted holder, which doubles as a guide for checking abutment angulation.



#### Simplified temporization workflow

The Temporary Snap Coping easily snaps onto the Multi-unit Abutment Plus, eliminating the need for screw fixation during try-in and adjustment of the provisional prosthesis.

<sup>1</sup> Clinical screw included.

<sup>2</sup> Compatible with Multi-unit and Multi-unit Abutment Plus.

## Surgical components

### Precision Drill

	36118
--	-------

STERILE R



### Twist Drills

	7-10 mm	7-15 mm	10-18 mm
Ø 1.5		31278	
Ø 2.0	32296	32297	32299

STERILE R



### Twist Step Drills

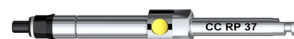
	7-10 mm	7-15 mm	10-18 mm
Ø 2.4/2.8	32260	32261	32262
Ø 2.8/3.2	37873	34638	34639
Ø 3.2/3.6	32263	32264	32265
Ø 3.8/4.2	32275	32276	32277
Ø 4.2/4.6	37874	34582	34583
Ø 4.2/5.0	37875	37876	

STERILE R



### Implant Drivers

	28 mm	37 mm
NP	36718	36719
RP	36720	36721
WP	37859	37860



### Bone Mills and Guides

	Bone Mill with Guide	Bone Mill Guide
NP	37863 Ø 4.4, 37864 Ø 5.2	37865
RP	37866 Ø 5.2, 37867 Ø 6.2	37868
WP	37869 Ø 6.7	37870




32068 All-on-4® Guide



37791 Depth Probe  
7-18 mm Z-shaped



### STERILE R Cover screw

	NP	RP	WP
	36649	36650	37812

### Guide Drill

	35426
--	-------

STERILE R



### Direction Indicator Ø2/Ø2.4-2.8 mm

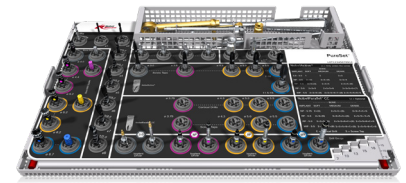
	32112
--	-------



### Screw Taps

Ø 3.5	36236
Ø 4.3	36237
Ø 5.0	36238
Ø 5.5 7-10 mm	37871
Ø 5.5 11.5-15 mm	37872

STERILE R



### 300402 NobelActive PureSet

All-in-one: Store NobelActive and NobelParallel CC surgical instruments in one single tray.

Includes surgical instruments to perform implant surgery with NobelActive implants. Drills, screw taps and bone mills must be ordered separately.



### 37888 Bone Mill Kit Conical Connection

Includes Bone Mills with Guide for all conical connection platforms.

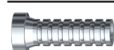
## Prosthetic components



Impression copings		Closed Tray	Open Tray <sup>3</sup>
	5 mm	38925 (Bar)	
	8 mm	38924	
	11 mm		29089



### Temporary Snap Coping Multi-unit Plus<sup>4,5</sup>



38915

### Guide Pins Multi-unit<sup>2</sup>

1/pkg

5/pkg



10 mm

31154

29102

20 mm

31155

29103

### Clinical screws

NP

RP

WP

Prosthetic Screw  
Multi-unit<sup>2</sup>

29285

29285

29285

Abutment Screw  
Multi-unit<sup>2</sup> Angled

36892

37893

37893



## Laboratory components

### Abutment Replica Multi-unit<sup>2</sup>

1/pkg

5/pkg



38918

38919

### Protection Analog Multi-unit<sup>2</sup>

5/pkg



29123

### Laboratory screws

NP

RP

WP

Laboratory Screw  
Multi-unit<sup>2</sup>  
(5/pkg)

29287

29287

29287

Laboratory Screw  
Multi-unit<sup>2</sup> Angled

37896

37897

37897

### Gold Coping Multi-unit<sup>2,4</sup>

1/pkg

5/pkg



29043

29042

29045  
(bar)

## Screwdrivers

### Screwdriver Machine Multi-unit<sup>2</sup>

21 mm



29158

### Screwdriver Manual Multi-unit<sup>2</sup>

25 mm



29156

### Screwdriver Machine Unigrip

20 mm

25 mm

30 mm

35 mm



29151

29152

29153

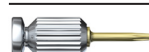
29154

### Screwdriver Manual Unigrip

20 mm

28 mm

36 mm

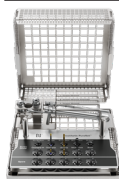


29148

29149

29150

### Prosthetic PureSet Basic (301233)



Unigrip Screwdriver Machine 20 mm

29151



Unigrip Screwdriver Machine 30 mm

29153



Multi-unit Screwdriver Machine 21 mm

29158



Omnigrip Screwdriver Machine 20 mm

37379



Omnigrip Screwdriver Machine 30 mm

37381



Manual Torque Wrench Prosthetic

29165

<sup>2</sup> Compatible with Multi-unit and Multi-unit Abutment Plus.

<sup>3</sup> 15mm guide included.

<sup>4</sup> Prosthetic screw included.

<sup>5</sup> Only compatible with Multi-unit Abutment Plus.

## Provide optimized esthetics

Choose from a variety of precision-manufactured CAD/CAM suprastructures in titanium and zirconia and combine these with acrylic, composite or porcelain. Other options include individualized crowns on an implant bridge for maximum esthetics. For patients who aren't able to clean a fixed restoration adequately, an acrylic removable denture on a NobelProcera Implant Bar Overdenture is an ideal solution.

### Fixed restorations



NobelProcera Implant Bridge Zirconia



NobelProcera Hybrid



NobelProcera Implant Bridge Titanium



NobelProcera Montreal Bar with Metallic Lingual

### Fixed-removable restorations

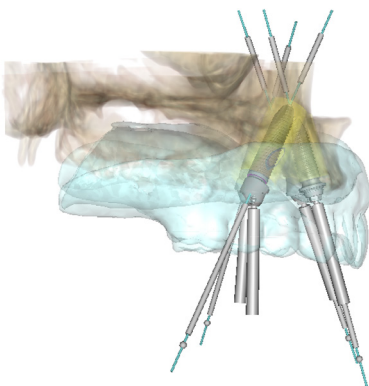


NobelProcera Free Form Milled Bar



NobelProcera Dolder® Bar

## Take predictability to the next level



### Prosthetic-driven planning with DTX Studio software

Diagnose, plan, collaborate with your team and order all the surgical components you need in one place with the DTX Studio suite.



### Make your plan a reality with NobelGuide

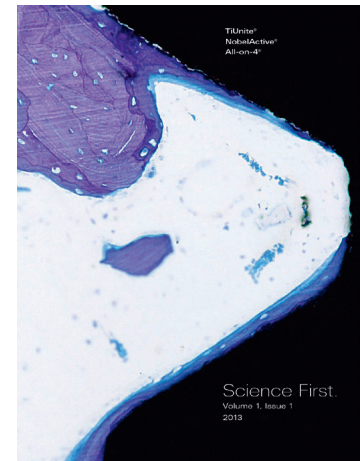
Benefit from predictable implant placement with a custom-designed, ready-to-use surgical template you can rely on.



# References

1. Weinstein R, Agliardi E, Fabbro MD, Romeo D, Francetti L. Immediate rehabilitation of the extremely atrophic mandible with fixed full-prosthesis supported by four implants. *Clin Implant Dent Relat Res* 2012;14:434-41\*
2. Babbush CA, Kanawati A, Kotsakis GA, Hinrichs JE. Patient-Related and Financial Outcomes Analysis of Conventional Full-Arch Rehabilitation Versus the All-on-4 Concept: A Cohort Study. *Implant Dent* 2014;23(2):218-24
3. Malo P, de Araújo Nobre M, Lopes A, Moss SM, Molina GJ. A longitudinal study of the survival of All-on-4 implants in the mandible with up to 10 years of follow-up. *J Am Dent Assoc* 2011; 142:310-20\*
4. Malo P, de Araújo Nobre M, Lopes A, Francischone C, Rigolizzo M. All-on-4 immediate function concept for completely edentulous maxillae: a clinical report on the medium (3 years) and long term (5 years) outcomes. *Clin Implant Dent Relat Res* 2012 May;14 Suppl 1:e139-50\*
5. Francetti L, Agliardi E, Testori T, Romeo D, Taschieri S, Del Fabbro M. Immediate rehabilitation of the mandible with fixed full prosthesis supported by axial and tilted implants: interim results of a single cohort prospective study. *Clin Implant Dent Relat Res* 2012 Oct;14(5):646-54\*
6. Tallarico M, et al. Five-Year Results of a Randomized Controlled Trial Comparing Patients Rehabilitated with Immediately Loaded Maxillary Cross-Arch Fixed Dental Prosthesis Supported by Four or Six Implants Placed Using Guided Surgery. *Clin Implant Dent Relat Res*. epub ahead 2015.\*
7. Babbush CA, et al. Marginal Bone Stability Around Tapered, Platform-Shifted Implants Placed with an Immediately Loaded Four-Implant-Supported Fixed Prosthetic Concept: A Cohort Study. *The International journal of oral & maxillofacial implants*. 2016;31(3):643-50.
8. Malo P, et al. Immediate loading of 'All-on-4' maxillary prostheses using trans-sinus tilted implants without sinus bone grafting: a retrospective study reporting the 3-year outcome. *European journal of oral implantology*. 2013;6(3):273-83.\*
9. Jensen OT, et al. Reduced arch length as a factor for four implant immediate function in the maxilla: A technical note and report of 39 patients followed for 5 years. *Journal of Oral and Maxillofacial Surgery*. Epub ahead 2016.\*

\*Studies on All-on-4® treatment concept with NobelSpeedy and Brånemark System implants.



For the full list of clinical data on the All-on-4® treatment concept, see the 2013 issue of *Science First* (volume 1, issue 1).

---

## ORDER ONLINE

Order our complete range of implants and prefabricated prosthetics 24 hours a day through the Nobel Biocare online store.

[nobelbiocare.com/store](https://nobelbiocare.com/store)

---

## ORDER BY PHONE

Call our customer service team or contact your sales representative.

[nobelbiocare.com/all-on-4](https://nobelbiocare.com/all-on-4)



© Nobel Biocare USA, LLC, 2020. MKT-4704 Rev. 00 (03/20, GMT 68445) All rights reserved. Nobel Biocare, the Nobel Biocare logotype and all other trademarks are, if nothing else is stated or is evident from the context in a certain case, trademarks of Nobel Biocare. Please refer to [nobelbiocare.com/trademarks](https://nobelbiocare.com/trademarks) for more information. Product images are not necessarily to scale. All product images are for illustration purposes only and may not be an exact representation of the product. Please contact the local Nobel Biocare sales office for current product assortment and availability. Disclaimer: For prescription use only. Caution: Federal (United States) law restricts this device to sale by or on the order of a licensed clinician, medical professional or physician. See Instructions For Use for full prescribing information, including indications, contraindications, warnings and precautions.