

CLINICAL CASE



Nobel Biocare N1™ system

Bobby Birdi, DMD, MSc
Felipe Ouriques, DDS, MSc
Angus Barrie, RDT
Catherine Chay, CDA





Bobby Birdi,
DMD, MSc



Felipe Ouriques,
DDS, MSc



Angus Barrie,
RDT



Catherine Chay,
CDA

Patient

79 years, female

Clinical situation

Tooth with periapical pathology and root fracture of the maxillary second premolar

Surgical solution

Extraction site, immediate Nobel Biocare N1 TiUltra™ implant, bone grafting with creos™ xenogain and PRF, screw-retained temporary crown.

Restorative solution

Screw-retained crown on the Nobel Biocare N1 Base.

Surgery date

June 2022

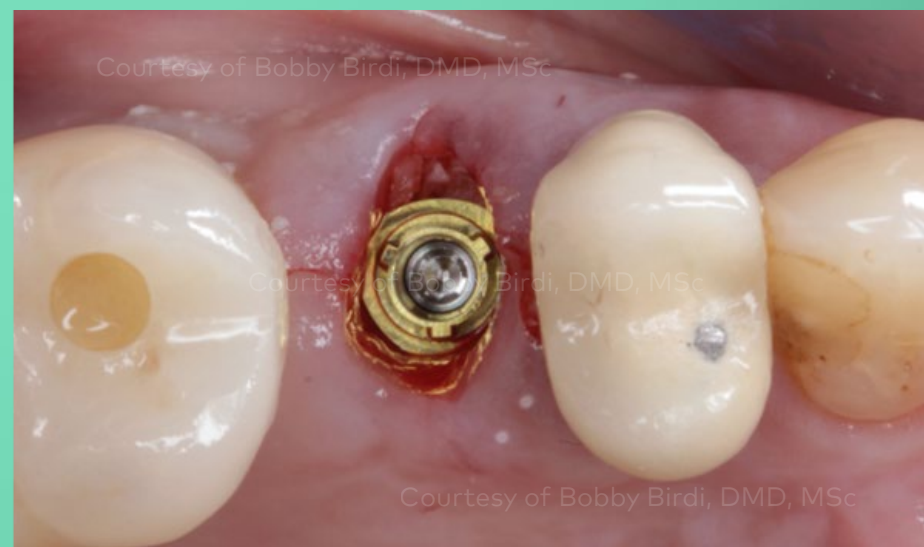
Total treatment time

1 month (final prosthetic delivered in July 2022)

Tooth position

#15 (FDI) #4 USA

Immediate implant placement after tooth extraction with the Nobel Biocare N1 system. Atraumatic tooth extraction with immediate implant placed in a fresh extraction socket, then immediate loading using a temporary abutment screwed to the Nobel Biocare N1 Base XEAL™.



Initial clinical situation

Surgical procedure

Restorative procedure

Outcome



Initial periapical X-ray revealing a fracture on the premolar root and periapical lesion.



Initial situation buccal view of tooth #15



Occlusal aspect of the premolar crown (#15)

Initial clinical situation

Surgical procedure

Restorative procedure

Outcome



The clinical situation of the fresh socket after atraumatic tooth extraction.



A buccal view showing that the tissue position and levels were maintained on the initial position.

Initial clinical situation

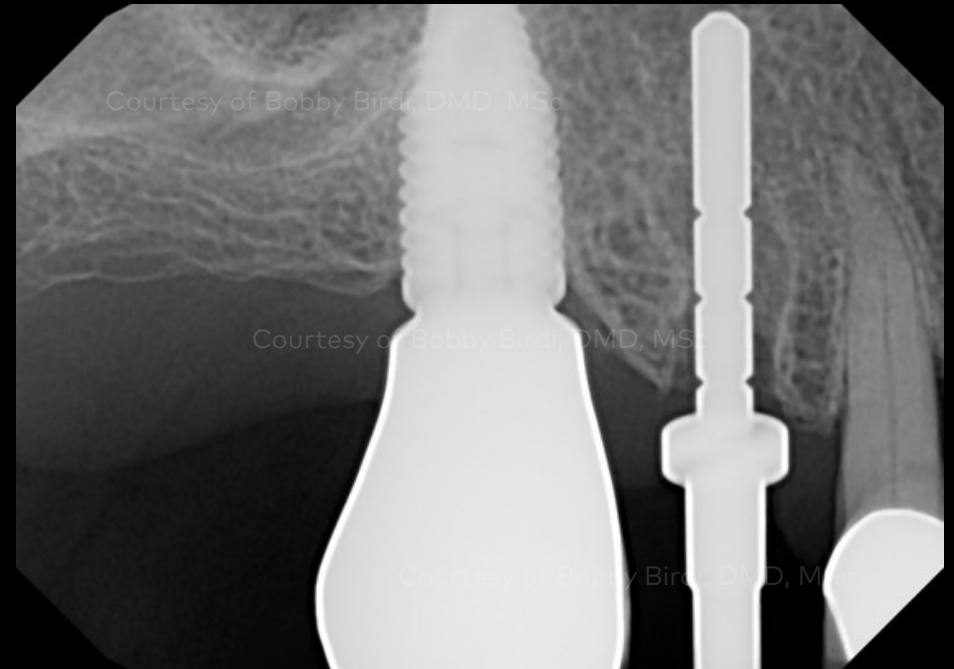
Surgical procedure

Restorative procedure

Outcome



Occlusal view of Direction Indicator placed after the osteotomy.



X-ray with Direction Indicator in position to confirm the right angulation of the osteotomy.

Initial clinical situation

Surgical procedure

Restorative procedure

Outcome



Nobel Biocare N1 TiUltra TCC RP 4.0 x 11 mm (300862).



Occlusal view of the implant position.

Initial clinical situation

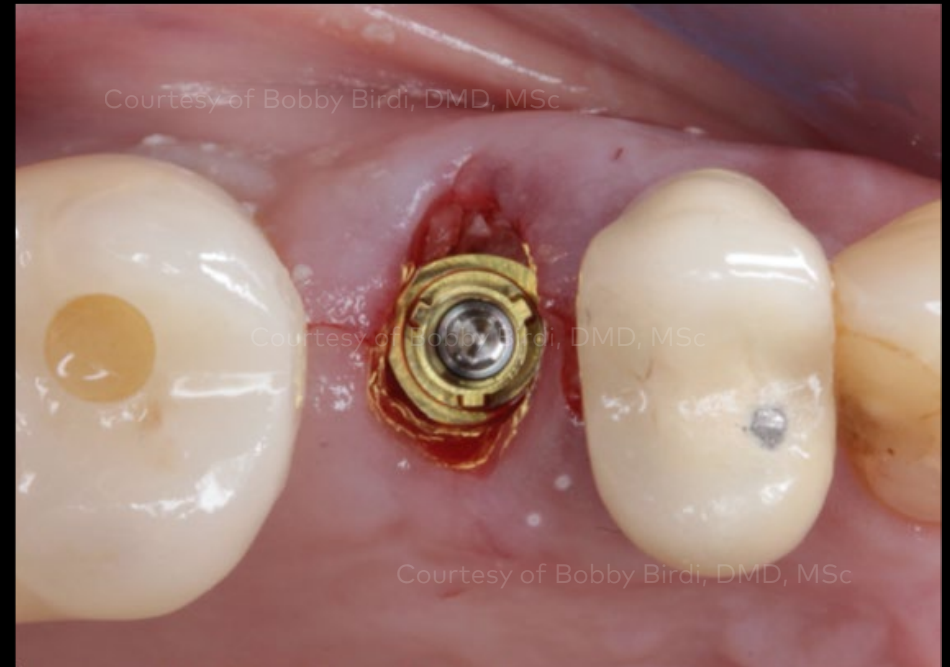
Surgical procedure

Restorative procedure

Outcome



Nobel Biocare N1 Base Xeal TCC RP 1.75 mm (300985).



Occlusal view with the Nobel Biocare N1 Base Xeal TCC screwed and torqued in the correct position.

Initial clinical situation

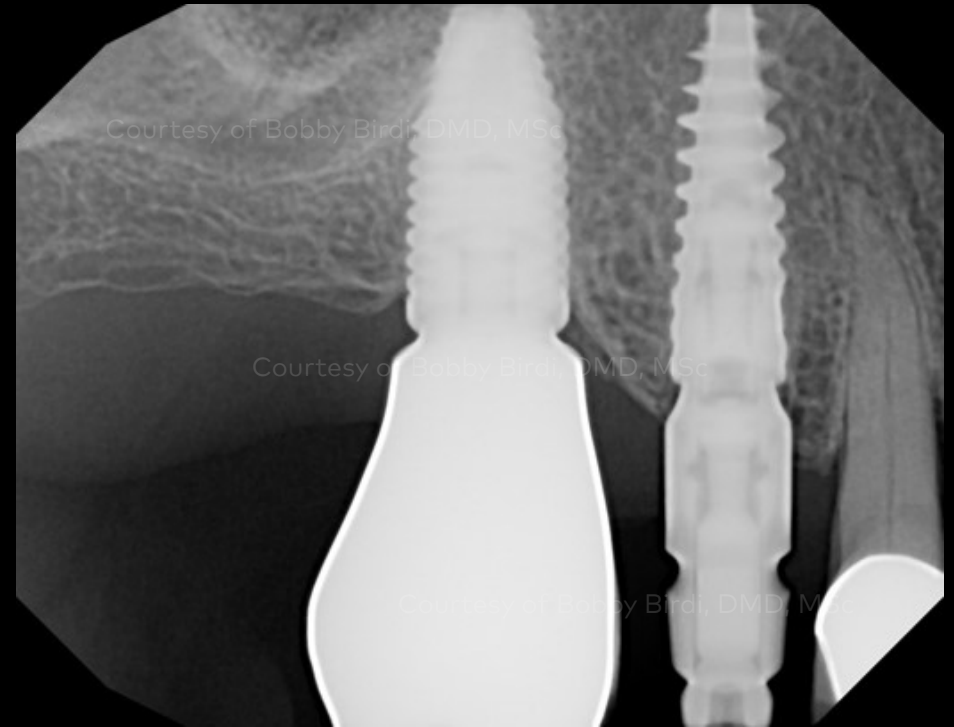
Surgical procedure

Restorative procedure

Outcome



Impression made at time of surgery.



X-ray with the impression coping to verify that it is appropriately seated.

Initial clinical situation

Surgical procedure

Restorative procedure

Outcome



Temporary Abutment Nobel Biocare N1 Base connected directly to the N1 Base Xeal TCC.



Temporary Abutment post reduced to the required height to capture the temporary crown.

Initial clinical situation

Surgical procedure

Restorative procedure

Outcome



Provisional restoration in place.



Lateral view showing the tissue margins.

Initial clinical situation

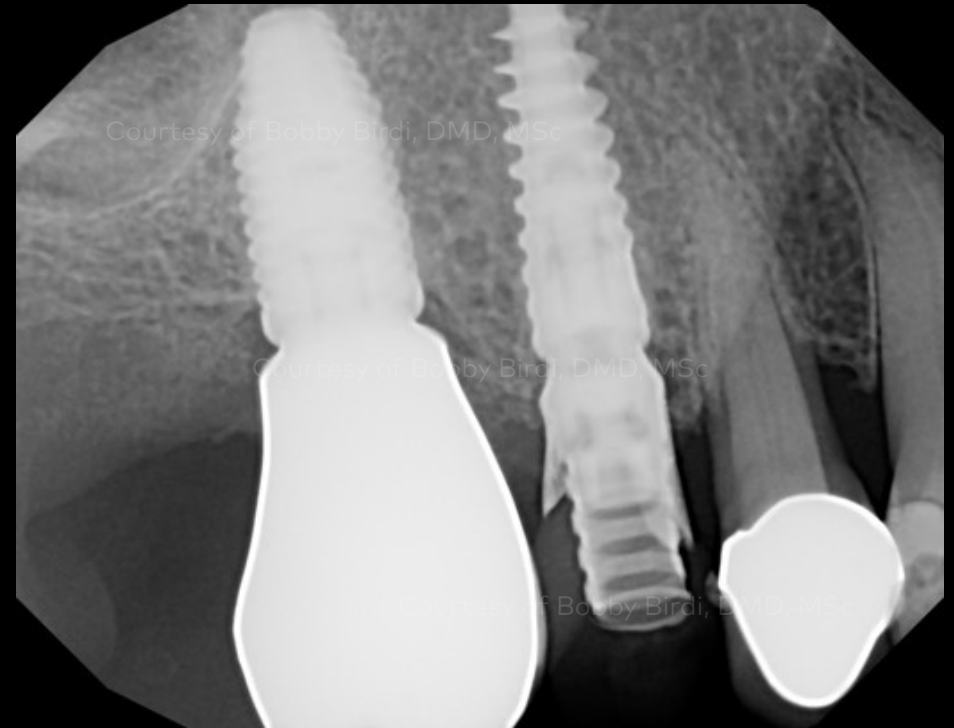
Surgical procedure

Restorative procedure

Outcome



Lateral view after grafting with creos xenogain and PRF and the provisional in place.



X-ray illustrating immediate post-op.

Initial clinical situation

Surgical procedure

Restorative procedure

Outcome



Lateral and occlusal view after 4 weeks post-surgery. The tissue margin is stable.

Initial clinical situation

Surgical procedure

Restorative procedure

Outcome



Four weeks post-op removed the provisional.*



The aspect of the tissue 4 weeks after the surgery.*

* 4 week load time currently outside of Nobel Biocare IFU guidelines.

Initial clinical situation

Surgical procedure

Restorative procedure

Outcome



X-ray of the implant with the final crown.



Final crown placed lateral and occlusal view.

Initial clinical situation

Surgical procedure

Restorative procedure

Outcome



One month final crown buccal and occlusal view.

Case courtesy of Dr. Bobby Birdi Dr. Felipe Ouriques



GMT 83477 GB 2302 © Nobel Biocare Services AG, 2023. All rights reserved. Disclaimer: Nobel Biocare, the Nobel Biocare logotype and all other trademarks are, if nothing else is stated or is evident from the context in a certain case, trademarks of Nobel Biocare. Please refer to nobelbiocare.com/trademarks for more information. Product images are not necessarily to scale. Some products may not be regulatory cleared/released for sale in all markets. Please contact the local Nobel Biocare sales office for current product assortment and availability. Caution: Federal (United States) law or the law in your jurisdiction may restrict this device to sale by or on the order of a dentist or a physician. See Instructions For Use for full prescribing information, including indications, contraindications, warnings and precautions. creos xenogain and creos xenogain collagen are manufactured by NIBEC Co., Ltd., Iwol electricity-electronic Agro-Industrial Complex, 116, Bamdi-gil, Iwol-myeon, Jincheon-gun, Chungcheongbuk-do, 27816, Korea and distributed by Nobel Biocare USA, LLC. Disclaimer of liability: Nobel Biocare disclaims any liability for any injury or damage to any person or property arising from the use of this clinical case. This clinical case is not intended to recommend any measures, techniques, procedures or products, or give advice, and is not a substitute for medical training or your own clinical judgment as a healthcare professional. Viewers should never disregard professional medical advice or delay seeking medical treatment because of something they have seen in this clinical case. Full procedure is not shown. Certain sequences have been cut. Products featured in this case may be part of an overall concept and may only be used in conjunction with the associated original products according to the instructions and recommendations of Nobel Biocare. Non-recommended use of products made by third parties in conjunction with Nobel Biocare products will void any warranty or other obligation, express or implied, of Nobel Biocare. The user of Nobel Biocare products has the duty to determine whether or not any product is suitable for the particular patient and circumstances. Nobel Biocare disclaims any liability, express or implied, and shall have no responsibility for any direct, indirect, punitive or other damages, arising out of or in connection with any errors in professional judgment or practice in the use of Nobel Biocare products. The user is also obliged to study the latest developments in regard to this Nobel Biocare product and its applications regularly. In cases of doubt, the user must contact Nobel Biocare. Since the utilization of this product is under the control of the user, it is his/her responsibility. Nobel Biocare does not assume any liability whatsoever for damage arising thereof.