



# creos™



[nobelbiocare.com](http://nobelbiocare.com)

YOU ARE WHAT  
WE STAND FOR.

care

Enhancing the experience

**easy-to-use**

advanced

and on the rise

Innovation is  
our passion  
but it's your reality  
THAT DRIVES US.

creos™ is the Nobel Biocare regenerative product portfolio, built to meet your everyday needs. Join us and experience the carefully designed, easy-to-use, effective solutions.

We aim to be the trusted regenerative partner for you and your patients, because you are what we stand for.

Sideways to your side

effective

# creos™ xenoprotect

A membrane with outstanding handling that facilitates bone gain



## Outstanding handling<sup>1,2</sup>

- Does not stick to instruments
- Repositioning in-situ possible
- Low surface expansion when hydrated
- Both sides can face the defect

## High mechanical strength<sup>2,3,4</sup>

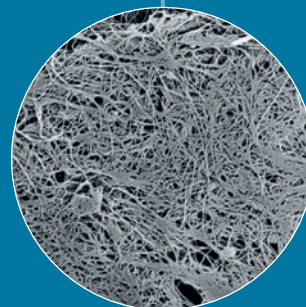
- Excellent suture retention
- Highly tear-resistant

## Enduring resistance to degradation in vivo<sup>\*3</sup>

- Manufacturing process intended to preserve the natural structure of the collagen fiber network, to confer a high resistance to degradation

## Facilitates bone gain<sup>2,3,5,6,7,8</sup>

- Excellent tissue compatibility<sup>3</sup>
- Good clinical results<sup>5</sup>



"What I like is that the handling is very easy. The mechanical stability is very high and when it is rehydrated it adapts very well to the underlying bone"

Dr. Bastian Wessing, Germany

\* As shown in an animal model (rat, subcutaneous)



Porcine

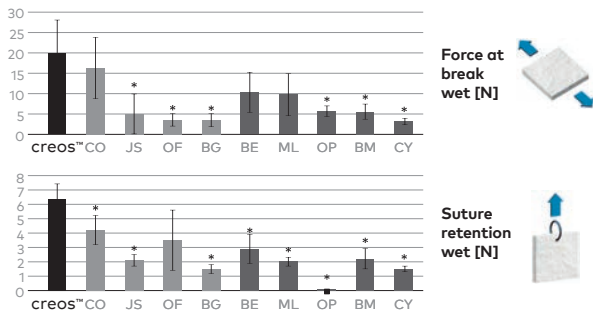


## High mechanical strength

In an in vitro study aiming to compare the mechanical strength of commonly used native non-chemically cross-linked and chemically cross-linked collagen membranes<sup>4</sup>.

- creos™ xenoprotect demonstrated the highest force at break, wet (21.2 N).
- creos™ xenoprotect had the highest suture retention, wet (6.1 N).

Comparison of commercial membrane in a hydrated state



Non cross-linked collagen membranes (NXL) – CX: creos™ xenoprotect [Nobel Biocare]; CO: Copios [Zimmer]; JS: Jason [botiss]; OF: Osseoguard Flex [3i]; BG: Bio-Gide [Geistlich]

Cross-linked collagen membranes (XL) – BE: BioMend Extend [Zimmer]; ML: Mem-Lok [BioHorizons]; OP: OssixPlus [Datum Dental]; BM: BioMend [Zimmer]; CY: Cytoplast RTM [Osteogenics]

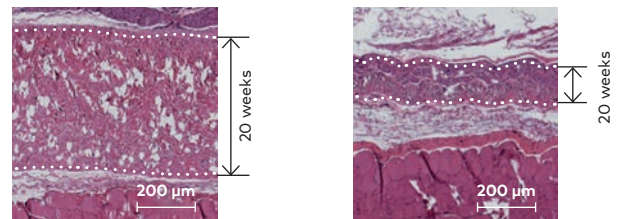
\*Statistically significant

## Enduring resistance to degradation in vivo without chemical cross linking<sup>3</sup>

Manufacturing process intended to preserve the natural structure of the collagen fiber network, to confer a high resistance to degradation.<sup>3</sup>

In an animal model, after 20 weeks, the thickness of xenoprotect decreased only slightly, whereas the reference membrane showed a thickness loss of around 50%, confirming the higher stability of xenoprotect against biodegradation in vivo.<sup>3</sup>

Representative histological images at 20 weeks implantation in a rat model.

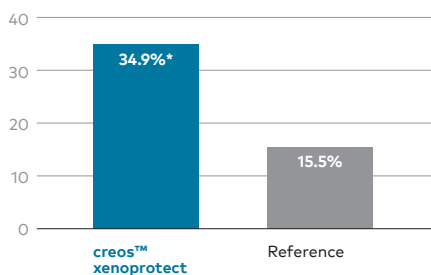


creos™ xenoprotect

Reference membrane

## Facilitates new bone formation<sup>2,3,5,6,7,8</sup>

New bone formation (%)



In a comparative in vivo study, creos™ xenoprotect demonstrated significantly higher new bone formation in the central portion of the defect.

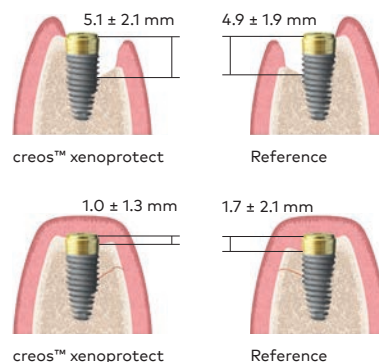
This increase in bone formation was associated with significantly increased expression of the growth factor *Bmp2*, which has a strong role in osteogenesis.<sup>7</sup>

\*Statistically significant

In a randomized controlled clinical trial, 24 patients were treated with creos™ xenoprotect and 25 with a reference membrane. In the creos™ xenoprotect group, the defect height reduced at 6-month re-entry by 81%.

In the reference membrane group, the defect height reduced at 6-month re-entry by 62%.<sup>5</sup>

Schematic showing the defect height prior to treatment and 6 months after GBR



Scan the code for clinical resources.

# creos™ xenogain

3 methods of application  
to meet all your bone  
grafting needs



Regenerating bone  
for 15 years

## Three different methods of application:



Vial



Bowl



Syringe

## Similar to human bone

- Chemical composition: Ca/P ratio
- Interconnected macropores<sup>9,10</sup>

## Easy handling

- Homogenous particle size<sup>9</sup>
- Hydrophilic for fast rehydration<sup>11,12</sup>

## Solid foundation for dental implant treatment

- Osteoconductive properties<sup>10</sup>
- Long-term volume stability<sup>13</sup>
- Uneventful healing<sup>8,11,12,13,14</sup>



"I appreciated its handling properties  
and I see its high hydrophilicity as a  
biological advantage in sinus grafting  
and peri-implant defect regeneration"

Dr. Werner Zechner, Austria



Bovine

# creos™ xenogain collagen



Block



Syringe

Purified cancellous bovine bone mineral granules and 10% porcine collagen in block form and syringe. The collagen helps to hold creos™ xenogain collagen in the desired place. Especially recommended for extraction socket management.



Bovine



Porcine

## Scaffold for successful regeneration

Preserved natural features of bone through optimized manufacturing process.<sup>10</sup>

### Chemical composition

With a calcium phosphate ratio that reflects the composition in human bone and a structure with low crystallinity. The body accepts creos™ xenogain as a suitable framework for bone formation.<sup>9</sup>

### Particle size

- Homogenous particle size<sup>9</sup>
- Maintains space for bone regeneration<sup>12</sup>

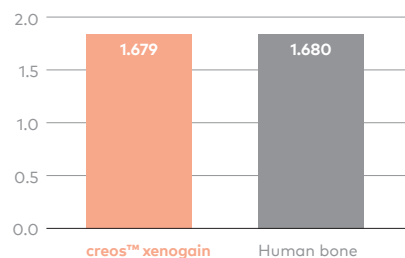
### Preserved Nanostructure

Nanostructure preserved thanks to treatment at comparatively low temperature (600°C) and no sintering.<sup>10</sup>

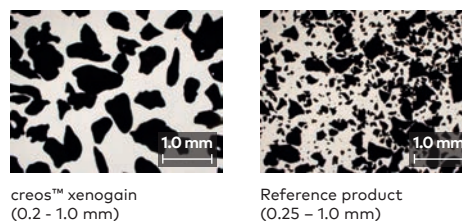
### Macro and micro-structure

Interconnected macropores allow cells to invade bone grafts and micropores contribute to capillary liquid uptake (hydrophilicity).<sup>15,16</sup>

Calcium Phosphate Ratio



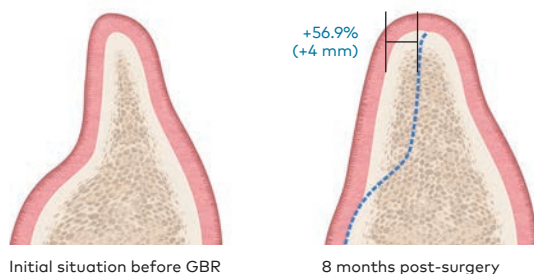
Photographic micrograph of creos™ xenogain and reference product showing the particle size distribution (magnification 20x)



## Solid foundation for implant placement

The graft integrates with the newly formed bone, building a basis for successful implant placement.<sup>12</sup>

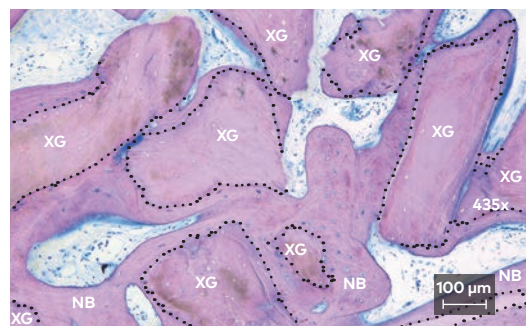
Schematic showing the defect and bone size prior to and after GBR



In a multicenter clinical study involving 46 patients, bone increase after 8 months was 4.0 mm (+56.9 % gain) and 4.7 mm (51.0 % gain) at 1 and 3 mm from the top of the crest, respectively.<sup>8</sup>

GBR led to robust bone regeneration during the 8 months of healing, enabling successful placement of 91 implants in 43 patients, with an average insertion torque of  $37.8 \pm 5.1$  Ncm.<sup>8</sup>

Histological cross section of the cellular components; NB – new bone, XG – graft, scale bar shown in the bottom right corner, red dashed line: bone to graft particle contact.



Histological assessment of the trephine cores showed 37.3 % of new bone, 39.1 % of graft material, and 23.6 % of soft tissue (n = 6 cores, 3 patients).<sup>8</sup>



Scan the code for clinical resources.

# creos™ allo.gain & allo.protect

A wide range of allograft materials, because all your cases are different



## Broad allograft portfolio for different clinical indications\*

- Mineralized and demineralized
- Cortical and cancellous
- Available in a bowl for an easy handling



## allo.gain demineralized bone matrix (dbm) putty

- 100% pure demineralized allograft with no filler or inert carrier
- Syringe type dispenser for easy application



## allo.protect pericardium membrane

- Durable protection

## Ensuring safety and quality levels

- A proprietary patented process of tissue cleaning and sterilization
- The tissue bank follows strict processing procedures in order to ensure safe tissue grafts of the highest quality for transplantation

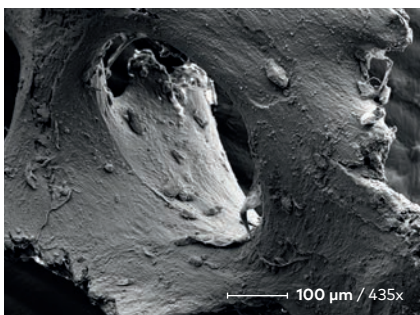
\*See Instructions For Use for full prescribing information, including indications, contraindications, warnings and precautions



Allograft



## creos™ allo.gain bone particulate: a wide range of options



Mineralized cancellous bone

### Mineralized cortical bone

Offers a high density bone with particle size range from 0.125 mm to 1 mm and available volume of 0.25 cc to 2.0 cc.

### Mineralized/demineralized cortical bone

Blend of 70% mineralized and 30% demineralized cortical bone.

### Mineralized corticocancellous bone

Blend of cortical and cancellous bone produced from sections of the ilium.

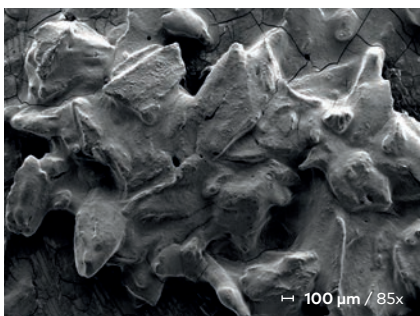
### Mineralized cancellous bone

A porous structured bone with particle size range from 0.25 mm to 1 mm and available volume of 0.25 cc to 2.0 cc.

### Demineralized cortical bone

Demineralized high density bone with particle size range from 0.125 mm to 1 mm and available volume of 0.25 cc to 2.0 cc.

## creos™ allo.gain demineralized bone matrix (dbm) putty



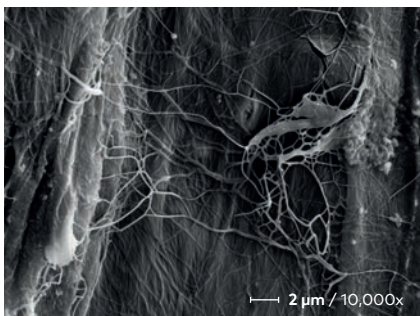
### 100% pure allograft

The creos™ allo.gain dbm putty is 100% pure demineralized allograft with no filler or inert carrier.

### Available in Three volumes

The creos™ allo.gain dbm putty is available in three different volumes: 0.5 cc, 1.0 cc and 2.5 cc. This means that the required amount can be used with minimal excess material.

## creos™ allo.protect pericardium membrane



### Three sizes

creos™ allo.protect is available in three different sizes: 1.0 x 1.0 cm, 1.5 x 2.0 cm and 2.0 x 3.0 cm.

### Easy to handle

Easy to tack and suture with high tear resistance. Rapid hydration and easy manipulation. Maintains shape and size once placed.

### Durable protection

Strong and stable due to the pore structure of native pericardium.

### Biocompatible and tissue friendly

Preservation of the native pericardium collagen matrix and its mechanical properties.



Scan the code for  
clinical resources.

# creos™ syntoprotect

Your easy choice of dense PTFE membranes to expand grafting options



## syntoprotect PTFE membrane

### Purposely leave the membrane exposed

Preservation of the soft tissue architecture and keratinized mucosa

### Non-resorbable

Will not resorb prematurely - you dictate healing time

### 100% dense (non-expanded) PTFE

Impervious to bacteria - pore size less than 0.3  $\mu\text{m}$

### Soft tissue attaches, but doesn't grow through the membrane

Exposed membrane allows for non-surgical removal; no anesthesia required



## syntoprotect Ti-reinforced PTFE membrane

### Delicate, lightweight framework

Easy to trim and compliant with the overlying soft tissues

### Less is more

Less titanium bulk allows for greater versatility in shaping and placement, providing additional stability in large, non-spacemaking osseous defects

### Handling options

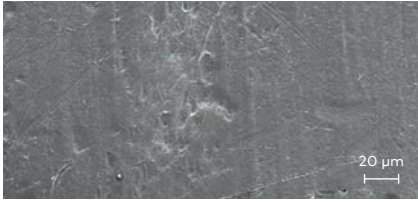
Broad portfolio with 13 shapes in 2 thicknesses

### Traditional frame design

Incorporating delicate and strategically-placed titanium "struts" with more than 25 years of clinical history and successful use in GRB

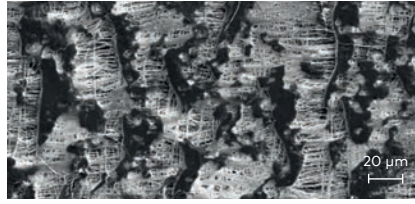
# Unique properties of dense PTFE membranes

## Dense PTFE



SEM image courtesy of Schüpbach Ltd, Switzerland.

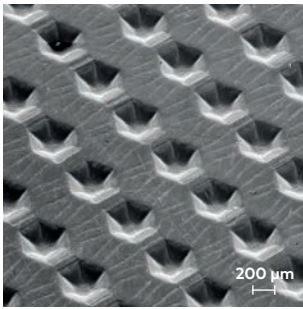
## Expanded PTFE



SEM image courtesy of Schüpbach Ltd, Switzerland.

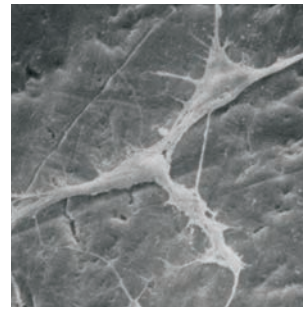
Dense PTFE was designed to withstand exposure in the oral environment, which represents an improvement to earlier versions of expanded PTFE in applications such as socket preservation where deliberate membrane exposure offers several advantages.

# Designed to aid in membrane stabilization



SEM image courtesy of Schüpbach Ltd, Switzerland.

Hexagonal surface dimples provide a textured surface that increases the area available for cellular attachment without increasing porosity. The textured surface is designed to help stabilize the membrane and the soft tissue flap.

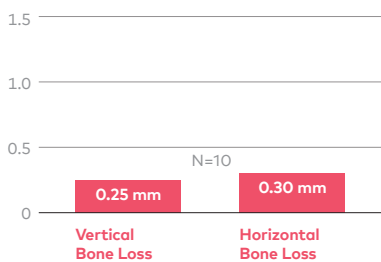


Although PTFE is inherently a non-stick material, cells attach to the outside of the dense PTFE membranes. Cellular adhesion is important to create a seal around the edges of exposed dense PTFE membranes or to support primary closure in larger graft applications.

# Clinical evidence

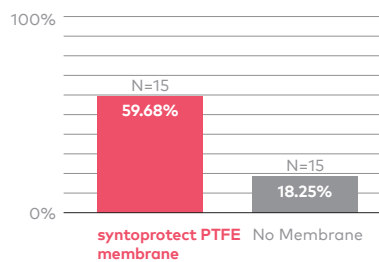
## Efficacy

Bone loss 1-year post-extraction<sup>19</sup>



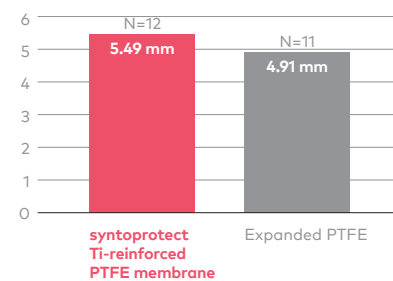
Vertical bone loss measured at crest. Horizontal measured from stent to buccal plate.

Soft tissue regeneration 90 days post-extraction<sup>20</sup>



Measured as reduction of the occlusal distance between buccal and lingual gingival margins.

Vertical ridge augmentation around implants<sup>21</sup>



Mean vertical bone regeneration.

## Predictability

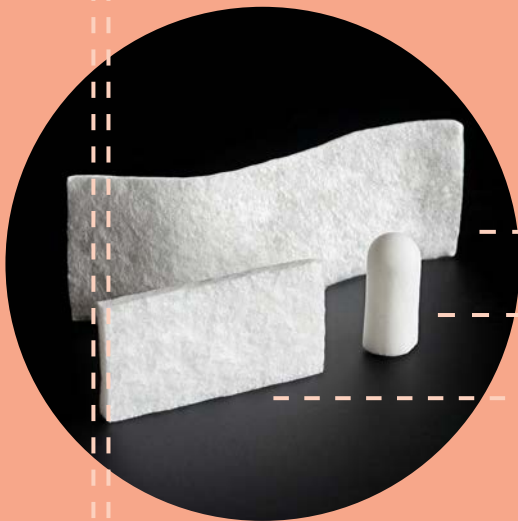
In two separate studies treating a total of 696 extraction sites using dense PTFE membranes in an exposed technique, there were no reported infections.<sup>17,18</sup>



Scan the code for clinical resources.

# creos™ absorbable collagen dental wound dressings

Complementing your regenerative set

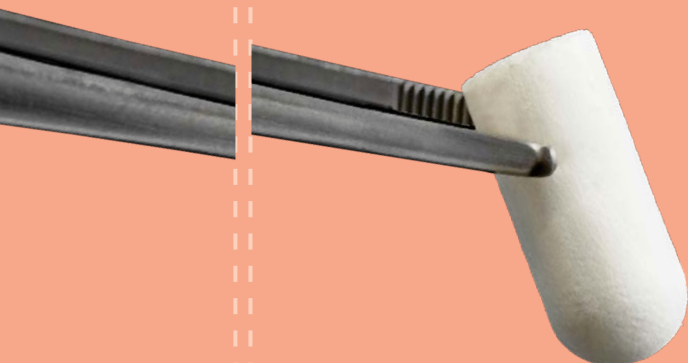


Three different shapes

creos™ xenotape

creos™ xenoplug

creos™ xenocote



Soft, white, pliable, non-friable, absorbent sponges made from collagen obtained from bovine deep flexor (Achilles) tendons.

Indicated for application to moist or bleeding clean oral wounds created during dental surgery, to control bleeding and protect the surface of the wound from further injury.

Can be used during surgical procedures prior to wound closure or left in-situ.



Bovine



**Depending on the chosen wound dressings product, one or more of the following applications are suitable\*:**

- Minor oral wounds
- Closure of grafted sites
- Repair of Schneiderian membrane
- Palatal donor sites
- Mucosal flaps
- Extraction sites
- Biopsy sites

\*See Instructions For Use for full prescribing information, including indications, contraindications, warnings and precautions.

**Arrive ready to use and are easy to handle.**



Scan the code for more resources.

# Products

## creos™ xenoprotect

Porcine collagen membrane

Size	Article No.
15x20 mm	N1520
25x30 mm	N2530
30x40 mm	N3040

## creos™ xenogain

Deproteinized bovine bone matrix

Weight	Granule size	Volume	Vial	Bowl	Syringe
0.25 g	Small (0.2-1.0 mm)	0.36 cc	N1110	N1110-B	N1210
	Large (1.0- 2.0 mm)	0.54 cc	N1111	N1111-B	N1211
0.50 g	Small (0.2-1.0 mm)	0.82 cc	N1120	N1120-B	N1220
	Large (1.0- 2.0 mm)	1.27 cc	N1121	N1121-B	N1221
1.00 g	Small (0.2-1.0 mm)	1.71 cc	N1130	N1130-B	
	Large (1.0- 2.0 mm)	2.69 cc	N1131	N1131-B	
2.00 g	Small (0.2-1.0 mm)	3.64 cc	N1140	N1140-B	
	Large (1.0- 2.0 mm)	5.74 cc	N1141	N1141-B	

## creos™ xenogain collagen

creos™ xenogain + 10% porcine collagen type I

	Size	Article No.	
Block	100 mg	6 x 6 x 6 mm	N1320
	250 mg	7 x 8 x 9 mm	N1330
	500 mg	9 x 10 x 11 mm	N1340
Syringe	250 mg	4.6 x 40 mm	N1410
	500 mg	5.6 x 45 mm	N1420

## creos™ allo.gain

bone particulate

Vial	min/demin cortical		mineralized corticocancellous		mineralized cancellous		mineralized cortical			demineralized cortical	
	Medium 0.25-1 mm	Medium 0.25-1 mm	Large 0.5-1 mm	Medium 0.25-1 mm	Large 0.5-1 mm	Small 0.125-0.85 mm	Medium 0.25-1 mm	Large 0.5-1 mm	Small 0.125-0.85 mm	Large 0.5-1 mm	
0.25 cc		N4510	N4511	N4210	N4211	N4110	N4111	N4112	N4310	N4311	
0.50 cc	N4410	N4520	N4521	N4220	N4221	N4120	N4121	N4122	N4320	N4321	
1.00 cc	N4420	N4530	N4531	N4230	N4231	N4130	N4131	N4132	N4330	N4331	
2.00 cc	N4430	N4540	N4541	N4240	N4241	N4140	N4141	N4142	N4340	N4341	

Bowl	min/demin cortical		mineralized corticocancellous		mineralized cancellous		mineralized cortical	
	Medium 0.25-1 mm	Medium 0.25-1 mm	Large 0.5-1 mm	Medium 0.25-1 mm	Small 0.125-0.85 mm	Medium 0.25-1 mm	Small 0.125-0.85 mm	Medium 0.25-1 mm
0.25 cc		N4510-B	N4511-B	N4210-B	N4110-B	N4111-B		
0.50 cc	N4410-B	N4520-B	N4521-B	N4220-B	N4120-B	N4121-B		
1.00 cc	N4420-B	N4530-B	N4531-B	N4230-B	N4130-B	N4131-B		
2.00 cc	N4430-B	N4540-B	N4541-B	N4240-B	N4140-B	N4141-B		

## creos™ allo.gain

dbm putty

Size	Article No.
0.50 cc	N6110
1.00 cc	N6120
2.50 cc	N6130

## creos™ allo.protect

pericardium membrane



Size	Article No.
10 x 10 mm	N7110
15 x 20 mm	N7120
20 x 30 mm	N7140

## creos™ wound dressings







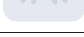


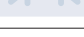



Product type	Configuration/size	Thickness	Article No.
creos™ xenotape	1 in x 3 in (2.5 cm x 7.5 cm)	0.3-0.8 mm	WD62200
creos™ xenoplug	0.375 in x 0.75 in (1 cm x 2 cm)		WD62202
creos™ xenocote	0.75 in x 1.5 in (2 cm x 4 cm)	2-4 mm	WD62201

(10 per dispenser)

## creos™ syntoprotect PTFE membrane

Shape	Picture	Size	Thickness	Article No.	Units / box	Description
Large		25 x 30 mm	200 µm	N162530-1	1	Designed specifically for extraction site grafting and augmentation procedures where exposure to the oral cavity is common
			200 µm	N162530-4	4	
Small		12 x 24 mm	200 µm	N161224-1	1	
			200 µm	N161224-10	10	

## creos™ syntoprotect Ti-reinforced PTFE membrane

Shape	Picture	Size	Thickness	Article No.	Units / box	Description
No. 1		12 x 24 mm	150 µm	N1615TI-A01-1	1	Designed for narrow single-tooth extraction sites, especially where one bony wall is missing
			250 µm	N1625TI-A01-1	1	
No. 2		14 x 24 mm	150 µm	N1615TI-A02-1	1	Designed for single-tooth extraction sites, especially where one or more bony walls are missing
			250 µm	N1625TI-A02-1	1	
No. 3		17 x 25 mm	150 µm	N1615TI-A03-1	1	Designed for large buccal defects
			250 µm	N1625TI-A03-1	1	
No. 4		20 x 25 mm	150 µm	N1615TI-A04-1	1	Designed for large extraction sites and limited ridge augmentation
			250 µm	N1625TI-A04-1	1	
No. 5		36 x 25 mm	150 µm	N1615TI-A05-1	1	Designed for large extraction sites and limited ridge augmentation in the anterior maxilla
			250 µm	N1625TI-A05-1	1	
No. 6		25 x 30 mm	150 µm	N1615TI-A06-1	1	Designed for large bony defects, including ridge augmentation
			250 µm	N1625TI-A06-1	1	
No. 7		30 x 41 mm	150 µm	N1615TI-A07-1	1	Designed for large bony defects, including ridge augmentation in the anterior maxilla
			250 µm	N1625TI-A07-1	1	
No. 8		30 x 40 mm	150 µm	N1615TI-A08-1	1	Designed for very large bony defects, including ridge augmentation
			250 µm	N1625TI-A08-1	1	
No. 9		30 x 40 mm	150 µm	N1615TI-A09-1	1	Designed for very large bony defects, including ridge augmentation
			250 µm	N1625TI-A09-1	1	
No. 10		24 x 38 mm	150 µm	N1615TI-A10-1	1	Designed for large extraction sites, including ridge augmentation
			250 µm	N1625TI-A10-1	1	
No. 11		38 x 38 mm	150 µm	N1615TI-A11-1	1	Designed for large bony defects, including ridge augmentation
			250 µm	N1625TI-A11-1	1	
No. 12		38 x 38 mm	150 µm	N1615TI-A12-1	1	Designed for large bony defects, including distal extension of the posterior ridge
			250 µm	N1625TI-A12-1	1	
No. 13		40 x 50 mm	150 µm	N1615TI-A13-1	1	Designed for the largest bony defects, including ridge augmentation
			250 µm	N1625TI-A13-1	1	





# References

## 1-10

1. Arrighi I, Wessing B, Rieben A, et al. Resorbable collagen membranes expansion in vitro. *J Dent Res* 2014;93 (Spec Iss B):631
2. Wessing B, Emmerich M, Bozkurt A. Horizontal ridge augmentation with a novel resorbable collagen membrane: a retrospective analysis of 36 consecutive patients. *Int J Periodontics Restorative Dent* 2016;36(2):179–187.
3. Bozkurt A, Apel C, Sellhaus B, et al. Differences in degradation behavior of two non-cross-linked collagen barrier membranes: an in vitro and in vivo study. *Clin Oral Impl Res*; 2014; 25(12):1403-1411
4. Gasser A, Wessing B, Eummelen L, et al. Mechanical stability of collagen membranes: an in vitro study. *J Dent Res* 2016;95(Spec Iss A): 1683
5. Wessing B, Urban I, Montero E, et al. A multicenter randomized controlled clinical trial using a new resorbable non-cross-linked collagen membrane for guided bone regeneration at dehiscid single implant sites: interim results of a bone augmentation procedure. *Clin Oral Impl Res*; 2017;28(11):e218–e226.
6. Sanz-Sanchez I, Wessing B, Polizzi G, et al. Randomized clinical trial comparing two resorbable collagen membranes demonstrates good bone formation and soft tissue healing with GBR at single implant sites with dehiscence defects. *J Clin Periodontol* 2018;45(S19):19–20 [oral presentation].
7. Omar O, Dahlin A, Gasser A, et al. Tissue dynamics and regenerative outcome in two resorbable non-cross-linked collagen membranes for guided bone regeneration: A preclinical molecular and histological study in vivo. *Clin Oral Impl Res*; 2018;29(1):7–19
8. Aleksic Z, Milikovic I, Lazic Z, et al. A multicenter clinical investigation demonstrates bone regeneration in severe horizontal defects in the posterior mandible using creos™ xenoprotect: Interim results. *J Clin Periodontol* 2018;45(S19):306
9. Nobel Biocare, data on file.
10. Rhee S-H, Park HN, Seol Y-J et al. Effect of heat-treatment temperature on the osteoconductivity of the apatite derived from bovine bone. 2006 Key Engineering Materials 309-311:41-44

## 11-20

11. Park HN, Han, SH, Kim KW, et al. A study on the safety and efficacy of bovine bone-derived bone graft material (OCS-B). *J Korean Acad Periodontol*. 2005 Jun;35(2):335 – 43
12. Park JB, et al. Maxillary sinus floor augmentation using deproteinized bovine bone-derived bone graft material (OCS-B). Clinical and histologic findings in humans. *The Journal of the Korean Dental Association*. 2007;45(8):491–99
13. Shin S-Y, et al. Long-term results of new deproteinized bovine bone material in a maxillary sinus graft procedure. *J Periodontal Implant Sci*. 2014;44:259-64.
14. Kim Y-T, et al. Periodontal Repair on Intrabony Defects treated with Anorganic Bovine-derived Xenograft. *J Korean Acad Periodontol*. 2007;37(3):489 – 96
15. Fernandez de Grado G, Keller L, Idoux-Gillet Y et al. Bone substitutes: a review of their characteristics, clinical use, and perspectives for large bone defects management. *Journal of Tissue Engineering Volume 9*: 1–18, 2018
16. Zhang K, Fan Y, Dunne N et al. Effect of microporosity on scaffolds for bone tissue engineering. *Regenerative Biomaterials*, 2018, 115–124
17. Barboza EP, Stutz B, Ferreira VF, Carvalho W. Guided bone regeneration using nonexpanded polytetrafluoroethylene membranes in preparation for dental implant placements - a report of 420 cases. *Implant Dent*. 2010;19:2-7.
18. Hoffman O, Bartee BK, Beaumont C, Kasaj A, Deli G, Zafiroopoulos GG. Alveolar bone preservation in extraction sockets using non-resorbable dense PTFE membranes: A retrospective non-randomized study. *J Periodontol* 2008;79:1355-1369.
19. Fotek PD, Neiva RF, Wang HL. Comparison of dermal matrix and polytetrafluoroethylene membrane for socket bone augmentation: a clinical and histologic study. *J Periodontol* 2009;80:776-785.
20. Barboza EP, Francisco BS, Ferreira VF. Soft tissue enhancement using non-expanded PTFE membranes without primary closure [abstract]. Presented at the 2008 Research Forum Poster Session. Annual Meeting of the American Academy of Periodontology (AAP) in Seattle, WA, September 6-9, 2008.

21. Ronda M, Rebaudi A, Torelli L, Stacchi C. Expanded vs. dense polytetrafluoroethylene membranes in vertical ridge augmentation around dental implants: a prospective randomized controlled clinical trial. Clin. Oral Impl. Res. 2014 Jul;25(7):859-66.



---

### Order online

Order the complete creos™ range 24 hours a day through the Nobel Biocare online store.

[store.nobelbiocare.com](https://store.nobelbiocare.com)

---

### Order by phone

Contact your sales representative or call our customer service team

US 800 322 5001

Canada 800 939 9394

YOU ARE WHAT  
WE STAND FOR.



[nobelbiocare.com](https://nobelbiocare.com)



87896 B NA 2212 (Rev 01, 12/22) Printed in USA © Nobel Biocare USA, LLC, 2022. All rights reserved.

Disclaimer: Nobel Biocare, the Nobel Biocare logotype and all other trademarks are, if nothing else is stated or is evident from the context in a certain case, trademarks of Nobel Biocare. Please refer to [nobelbiocare.com/trademarks](https://nobelbiocare.com/trademarks) for more information. Product images are not necessarily to scale. All product images are for illustration purposes only and may not be an exact representation of the product. Some products may not be regulatory cleared/released for sale in all markets. Please contact the local Nobel Biocare sales office for current product assortment and availability. Caution: Federal (United States) law or the law in your jurisdiction may restrict this device to sale by or on the order of a dentist or a physician. See Instructions For Use for full prescribing information, including indications, contraindications, warnings and precautions. creos™ xenoprotect is manufactured by Matricel GmbH, Kaiserstrasse 100, D-52134 Herzogenrath, Germany and distributed by Nobel Biocare USA, LLC. creos™ xenogain and creos™ xenogain collagen are manufactured by NIBEC Co., Ltd., Iwol electricity-electronic Agro-Industrial Complex, 116, Bamdi-gil, Iwol-myeon, Jincheon-gun, Chungcheongbuk-do, 27816, Korea and distributed by Nobel Biocare USA, LLC. creos™ allo.gain and creos™ allo.protect are manufactured by Community Tissue Services (CTS), 2900 College Drive, Kettering, OH 45420, USA and distributed by Nobel Biocare USA, LLC. creos™ syntoprotect is manufactured by Osteogenics Biomedical, Inc., 4620 71st Street, Bldg 78-79, Lubbock, TX 79424, USA and distributed by Nobel Biocare USA, LLC. creos™ xenocote, creos™ xenotape and creos™ xenoplug are manufactured by Integra LifeSciences Corporation, 311 Enterprise Drive, Plainsboro, NJ 08536, USA and distributed by Nobel Biocare USA, LLC.