

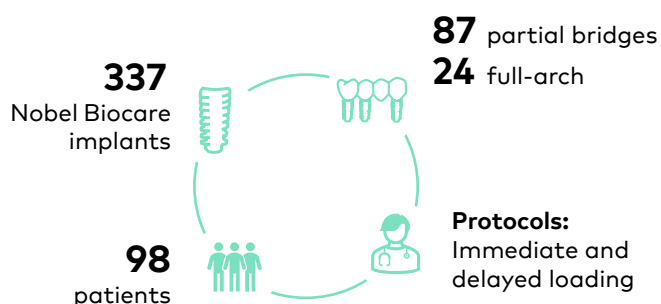
# NobelProcera® Zirconia Implant Bridges support long-term clinical success

Up to 12-year follow-up of 111 NobelProcera® Zirconia Implant Bridges

This retrospective analysis demonstrated excellent long-term prosthetic survival and minimal marginal bone loss of NobelProcera® Zirconia Implant Bridges over the long-term follow-up

Pozzi A, Arcuri L, Fabbri G, Singer G, Londono J. Long-term survival and success of zirconia screw-retained implant-supported prostheses for up to 12 years: A retrospective multicenter study. J Prosthet Dent. 2021 Jun 26;S0022-3913(21)00265-1. Online ahead of print.

## Study design



## Clinical relevance

**Confidence and reliability:** Excellent long-term prosthetic survival, with minimal marginal bone loss independent of bridge type, implant type and connection, or loading protocol.

**Healthy soft tissue response:** Low rates of peri-implant mucositis and peri-implantitis confirm excellent biocompatibility of zirconia.

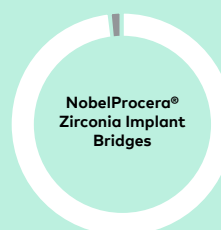
**Minimal marginal bone loss** at restorations connected at both abutment and implant level.

**CAD/CAM zirconia frameworks offer precision, passive fit and high material quality:** Few technical and biologic complications, credited to industrial design.

**This study confirms the success of original prosthetics on Nobel Biocare implants.**

## The results

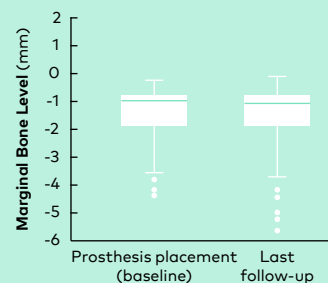
- Excellent prosthetic survival of 98.2% with the mean follow-up of 7.2 years.
- Few technical complications and no framework fractures.



98.2% prosthetic survival

0 framework fractures

- Minimal marginal bone loss of 0.18 mm from definitive prosthesis delivery to last follow-up independent of bridge type, implant type and connection, or loading protocol.

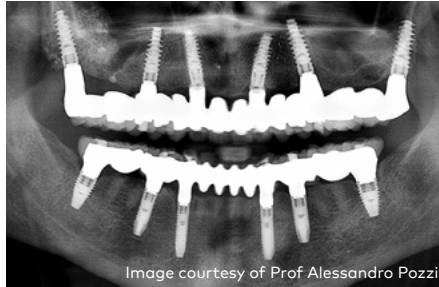


- Minimal marginal bone loss of  $0.17 \pm 0.62$  mm for implant-level prostheses and  $0.20 \pm 0.43$  mm for abutment-level prostheses.
- Healthy soft tissue with low rates of peri-implant mucositis (2.7%) and peri-implantitis (3.8%) over long-term.
- High patient satisfaction and excellent long-term esthetics.

## Sample clinical case from the study



Clinical view at the last visit: 12-year follow-up for the maxillary and 6-year follow-up for the mandibular NobelProcera® Zirconia Implant Bridge.



Panoramic radiograph at the 12-year follow-up for maxillary prosthesis and 6-year follow-up for mandibular prosthesis.

### NobelProcera® restorations on Nobel Biocare implants are well documented

At time of publication, November 2021

**93** publications

**5,137** patients

**22,565** Nobel Biocare implants

**NobelProcera®  
Zirconia Implant  
Bridges provide a  
reliable long-term  
treatment option  
for partial and  
complete edentulism  
with no framework  
fractures.**

### More to explore



Read the full study



FOR - Framework materials: treatment guidelines



[nobelbiocare.com/nobelprocera-restorations](https://nobelbiocare.com/nobelprocera-restorations)

GMT 77891 © Nobel Biocare Services AG, 2022. All rights reserved. Nobel Biocare, the Nobel Biocare logotype and all other trademarks are, if nothing else is stated or is evident from the context in a certain case, trademarks of Nobel Biocare. Please refer to [nobelbiocare.com/trademarks](https://nobelbiocare.com/trademarks) for more information. Product images are not necessarily to scale. All product images are for illustration purposes only and may not be an exact representation of the product. Disclaimer: Some products may not be regulatory cleared/released for sale in all markets. Please contact the local Nobel Biocare sales office for current product assortment and availability. See Instructions For Use for full prescribing information, including indications, contraindications, warnings and precautions

