

Extraction socket preservation



Dr. Javier Alandez, DMD, PhD

Periodontic and Implant Dentistry
Clinica Perio. Grupo Plénido,
Spain

“Based on my clinical experience, creos xeno.protect is easy to handle and adapts well to different bone defects, obtaining optimal regenerative results.”

Patient information:

57-years-old male

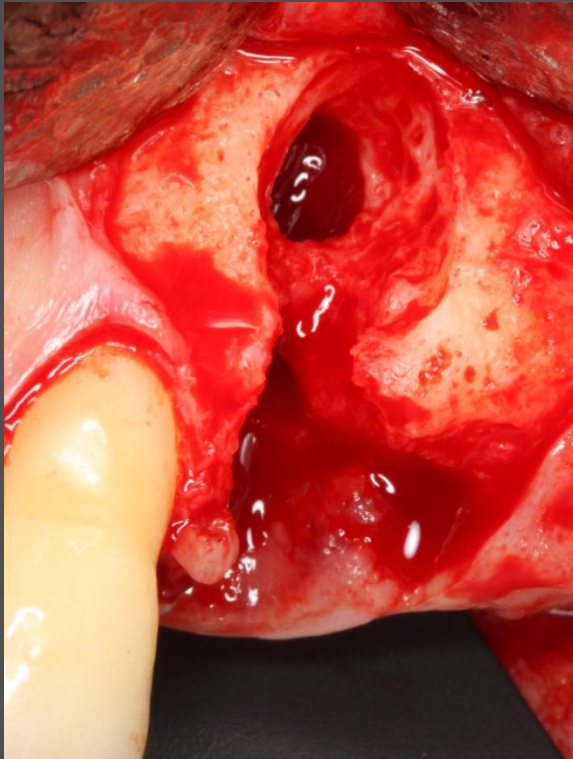
Indication:

Fractured first maxillary left premolar, tooth extraction needed.

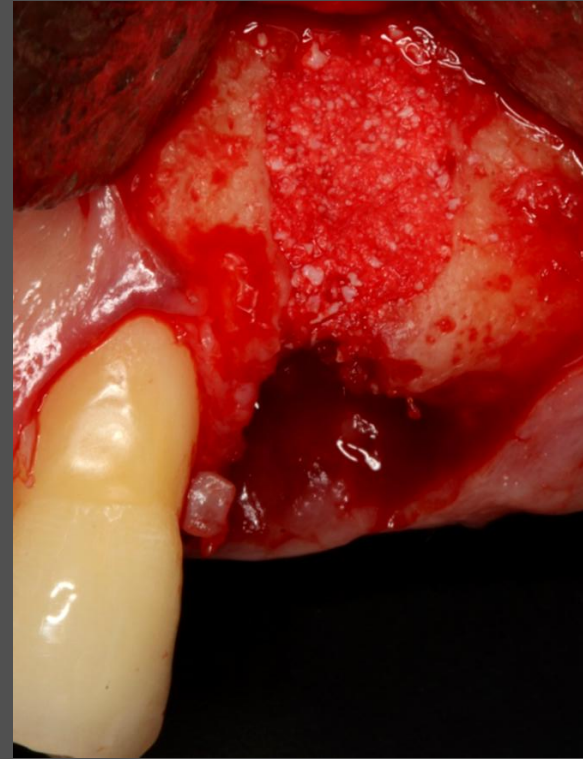
Solution:

The defect is filled using bovine hydroxyapatite. A creos xeno.protect porcine collagen membrane is used to cover the defect. After 3 months, re-opening of the treated area shows complete regeneration of the previous defect.

Extraction socket preservation

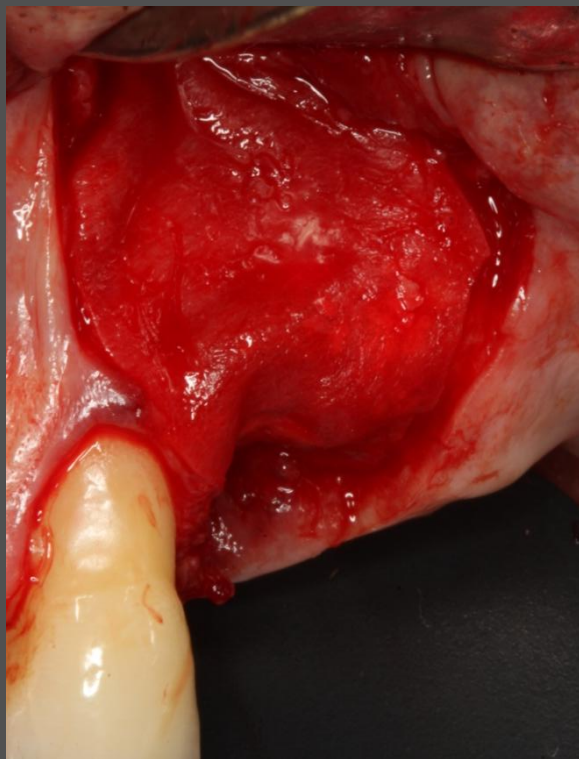


Following careful tooth extraction, the alveolar plate is checked and curettage of the area is done.

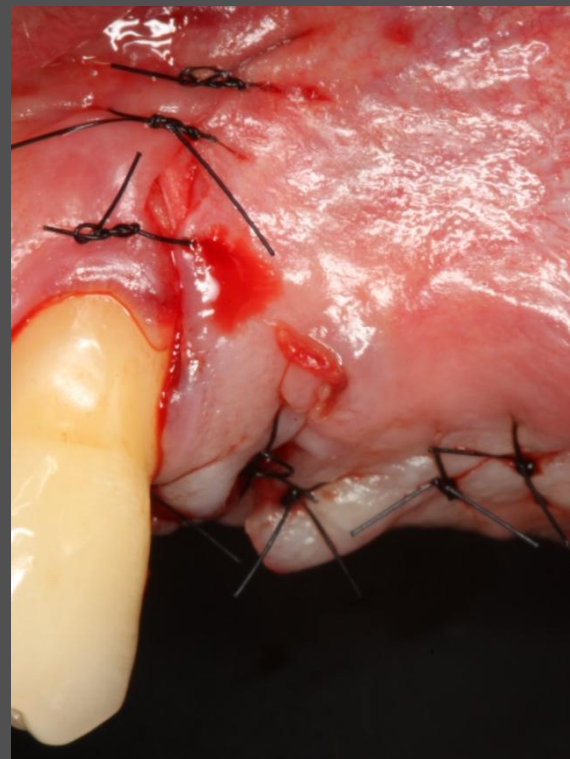


The defect is filled using bovine hydroxyapatite.

Extraction socket preservation

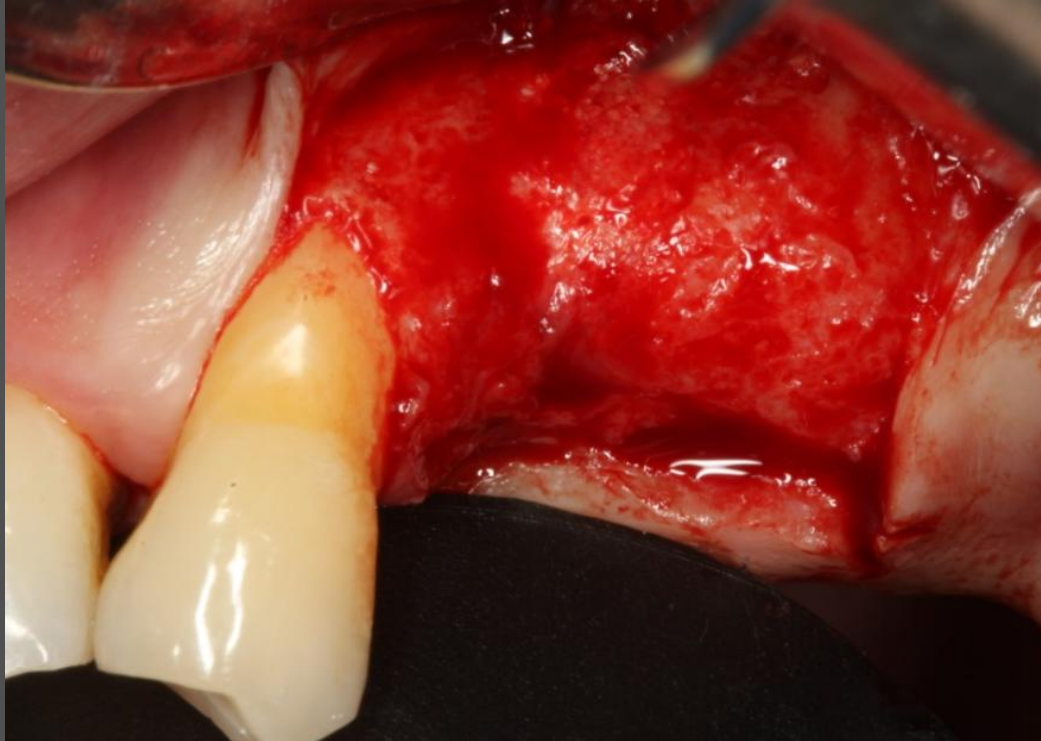


A creos xeno.protect membrane is trimmed to precisely cover the filled defect.



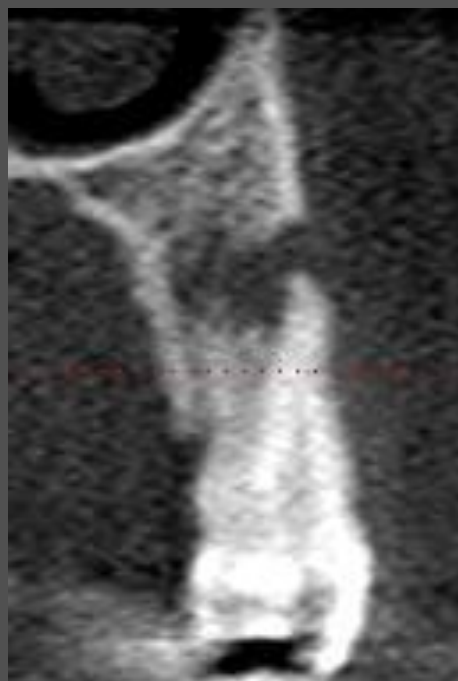
Suture is used to obtain complete coverage of the area.

Extraction socket preservation

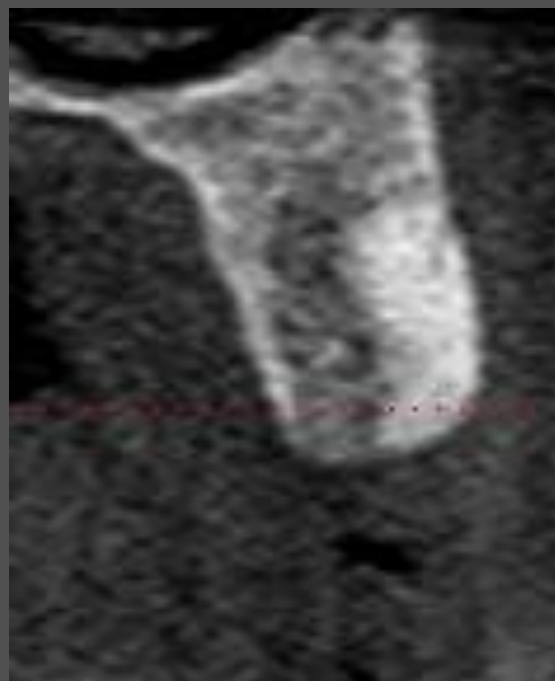


After 3 months of healing, re-opening of the treated area shows complete bone regeneration of the previous defect.

Extraction socket preservation



Pre-op, showing lesion on first premolar



Post-op at 3 month, showing augmented extraction site