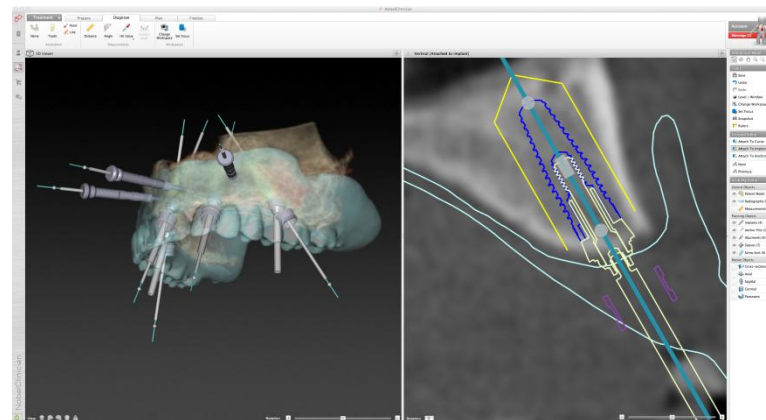


# Clinical Case NobelReplace<sup>®</sup> Conical Connection and NobelGuide<sup>®</sup>

October, 2012

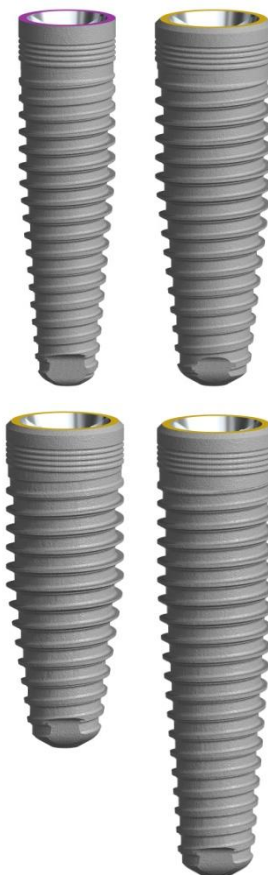


# NobelReplace<sup>®</sup> Conical Connection and NobelGuide<sup>®</sup>



Prof. Alessandro Pozzi  
Surgeon and Prosthodontist  
Rome, Italy

*„A new exciting tooling to achieve an accurate and straight forward implant placement in each clinical situation. The new NobelGuide System merges the well proven predictability of the computer assisted template guided implant placement with the outstanding biomechanical and biological features of the new NobelReplace Conical Connection“*



## All-on-4 maxilla and mandible

Female patient  
62 years old

### Implants:

2 x NobelReplace CC NP 3.5 x 13mm  
2 x NobelReplace CC RP 4.3 x 11.5mm  
2 x NobelReplace CC RP 4.3 x 13mm  
2 x NobelReplace CC RP 4.3 x 16mm

### Surgery date:

July 1<sup>st</sup>, 2012

### Time for total treatment:

6 months

### Type of implant procedure:

NobelGuide guided surgery, flapless

### FDI POS:

Edentulous maxilla and mandible

# NobelReplace<sup>®</sup> Conical Connection and NobelGuide<sup>®</sup>

## Full clearance



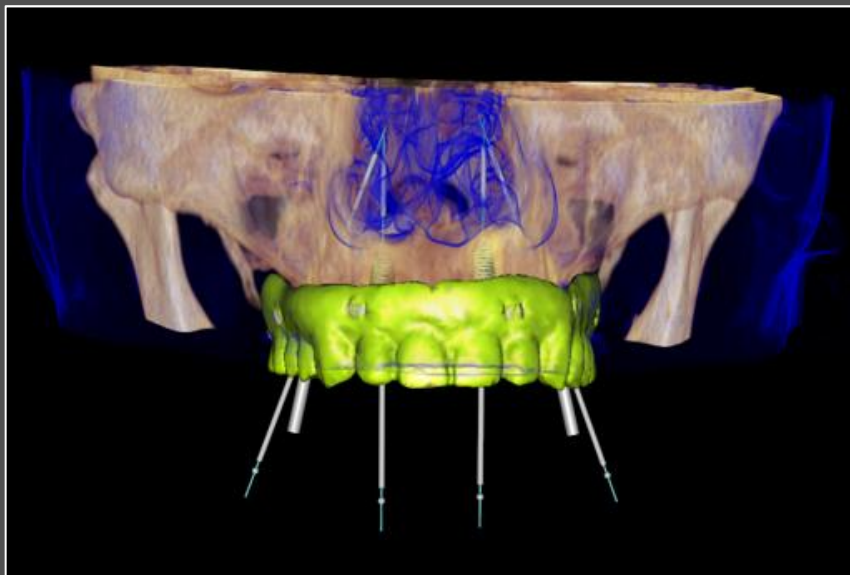
Clinical situation following removal of all teeth, 2-month healing time. During healing time the patient wore therapeutic dentures to rehabilitate the TMJ and re-establish the natural facial vertical and sagittal dimensions.



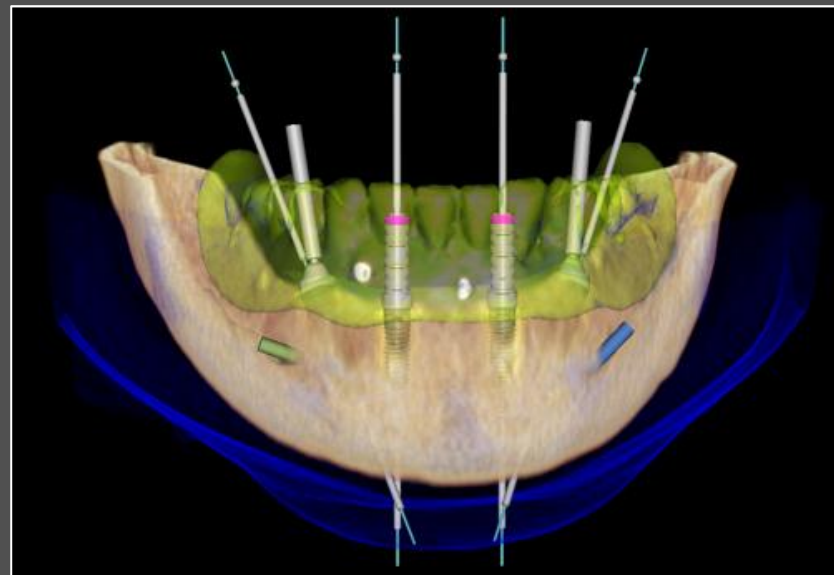
Moderate bone atrophy of the upper and lower jaws. The patient refused any bone augmentation procedures, requesting a minimally invasive approach. The patient's main concern was the final prostheses had to restore natural esthetics and function with an adequate lip and cheek support and a nice smile design.

# NobelReplace<sup>®</sup> Conical Connection and NobelGuide<sup>®</sup>

Digital treatment planning in NobelClinician Software



Digital treatment planning of All-on-4 treatment of the maxilla in NobelClinician Software.



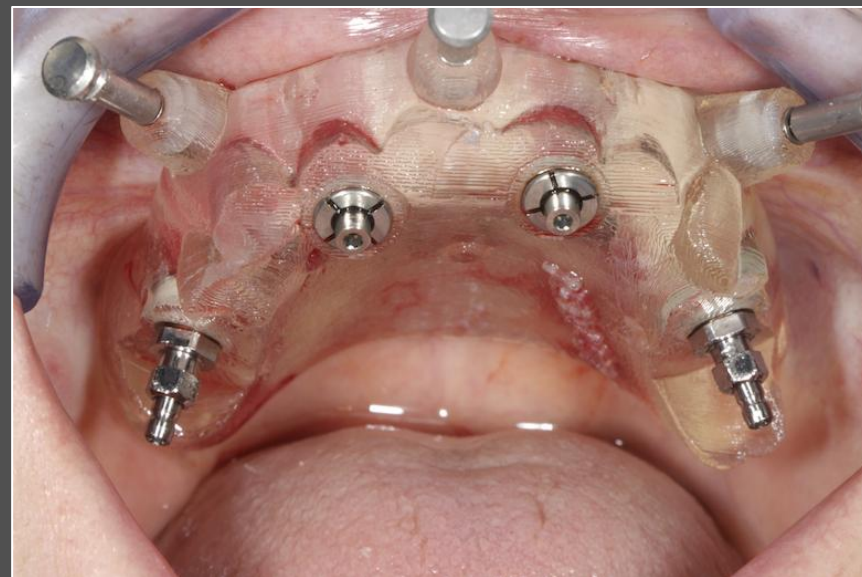
Digital treatment planning of All-on-4 treatment of the mandible in NobelClinician Software.

# NobelReplace<sup>®</sup> Conical Connection and NobelGuide<sup>®</sup>

## Guided surgery - Maxilla



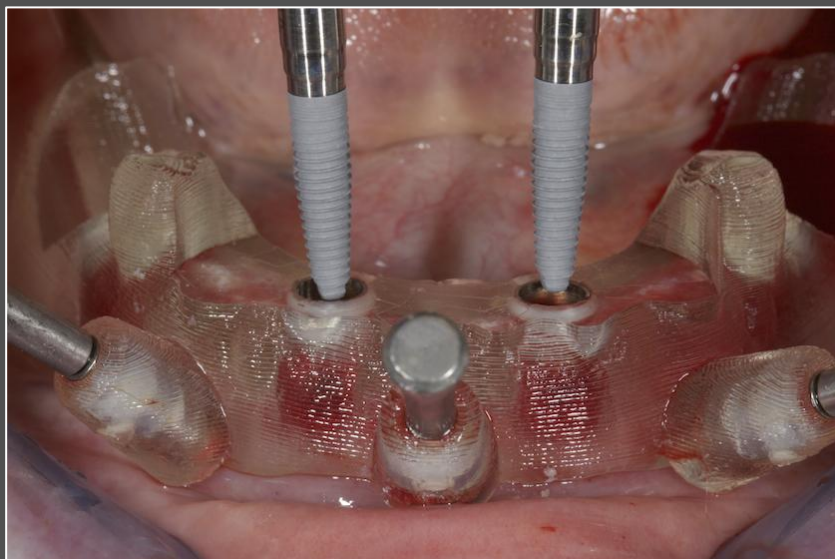
The maxilla NobelGuide Surgical template stabilized with Anchor Pins and the first implant with the Guided Template Abutment.



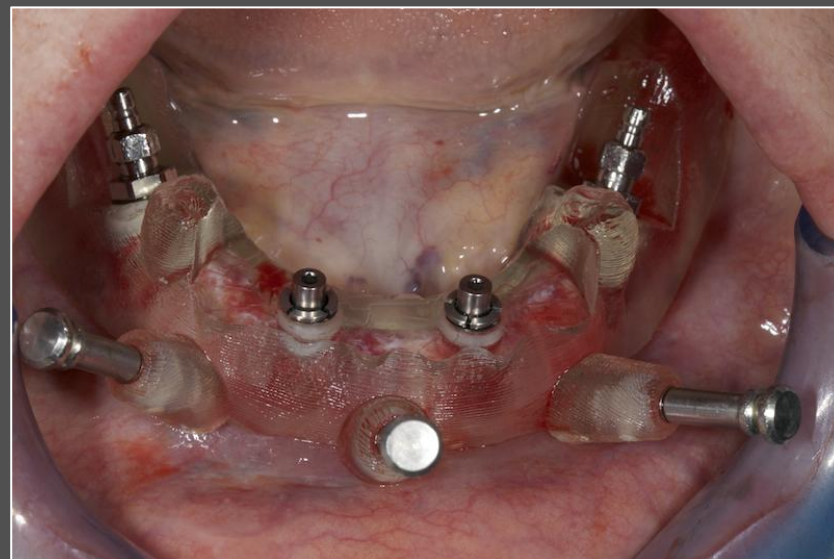
Four NobelReplace Conical Connection RP 4.3 implants (11.5 mm axial implants and 13 mm tilted implants) positioned with Guided Template Abutments on anterior implants and Guided Implant Mount Conical Connection on angled posterior implants.

# NobelReplace® Conical Connection and NobelGuide®

## Guided surgery - Mandible



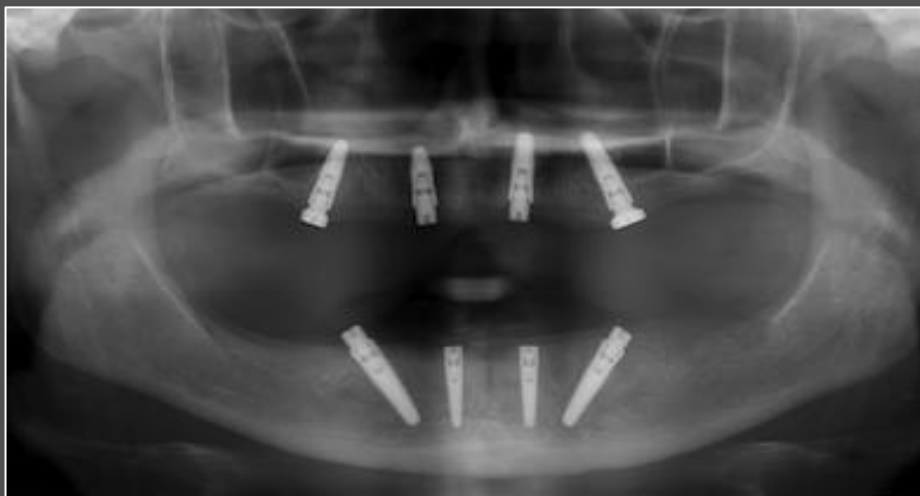
Placement of mandible anterior NobelReplace Conical Connection implants using the Guided Implant Mount Conical Connection.



Four NobelReplace Conical Connection implants positioned with Guided Template Abutments on NP 3.5 x 13 mm anterior implants and Guided Implant Mount Conical Connection on angled RP 4.3 x 16 mm posterior implants.

# NobelReplace<sup>®</sup> Conical Connection and NobelGuide<sup>®</sup>

## Prosthetics



90 days post-operative x-ray with Conical Connection Healing Abutments in place.



Try-in of maxilla NobelProcera CAD/CAM Hader's titanium Bar and of NobelProcera Zirconia Implant Bridge in the mandible

# NobelReplace<sup>®</sup> Conical Connection and NobelGuide<sup>®</sup>

## Final Prosthetics



Final maxilla overdenture with Lithium Disilicate Single Crowns fully anchored on a titanium bar and mandible Zirconia Implant Bridge with Lithium Disilicate Single Crowns cemented on the surface, 16 weeks post-operative.



Final x-ray, 16 weeks post-operative. The computer assisted template guided implant placement allowed an accurate and safe implant positioning for both the axial and tilted implants.