

Replacement parts

Catalog 1/2013



Note: In order to improve readability, Nobel Biocare does not use [™] or [®] in the running text. By doing so, however, Nobel Biocare does not waive any right to the trademark or registered mark and nothing herein shall be construed to the contrary.

Disclaimer: Some products may not be regulatory cleared/released for sale in all markets. Please contact the local Nobel Biocare sales office for current product assortment and availability.

Contents.

Introduction	Replacement parts	4
Brånemark System®	Multi-unit Abutment	5
	Standard Abutment components	6
	EsthetiCone™ Abutment	7
	Angulated Abutment – compatible with EsthetiCone™ Abutment	8
	Novum components	9
Steri-Oss™	Healing Abutment	10
Replace™ External Hex	Direct Abutment Engaging	11
Replace Select™	Direct Abutment Non-Engaging	12
	PME Transmucosal components	13
	O-Ring Abutment components	14
Cleaning and sterilization		15
Index	Articles by implant brand	18
	Articles in numerical order	25
Customer service worldwide		29

Replacement parts.

Nobel Biocare is committed to constant innovation. The aim is to offer products and procedures that allow dental professionals to achieve optimum clinical and esthetic results. Products are therefore replaced by new, improved alternatives regularly. However, Nobel Biocare still offers the prosthetic components and instruments needed to maintain reconstructions performed with older products.

Definition

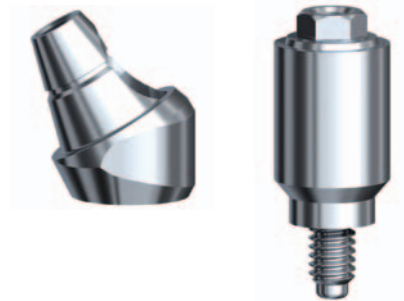
Replacement parts (also called spare parts) are defined as prosthetic components and instruments in the Nobel Biocare product range that are essential to maintain reconstructions that have already been performed on patients (clinical demand). Many of them have been, or will be, subject to the same changes as the regular product range, including new labels and packaging (e.g. some abutment screws feature now the TorqTite surface). Some product names have also been slightly changed in order to harmonize with the regular products.

Notes:

- They are delivered sterile unless indicated otherwise.
- Abutments that have never entered the oral cavity of a patient may be cleaned and sterilized according to standard procedures.

Caution:

- It is imperative that all tissue and bone fragments be removed from the implant interface before seating an abutment.
- Professionals using Steri-Oss, Replace and Brånemark System should obtain appropriate training and education for their particular level of treatment. Contact the local Nobel Biocare sales office for further information.
- If non-original (non Nobel Biocare) components or instruments are used, no claims can be made as to their safety and efficacy. Warranties relating to Nobel Biocare could be rendered null and void.



Multi-unit Abutment.



Permanent abutment on which a multiple-unit prosthetic restoration is screw-retained.

Contraindication: Single-unit restorations.

Procedure

- Connect the abutment to the implant using the pre-mounted disposable mounting device.
- Disconnect the mounting device from the abutment. Correct seating of the abutment can be verified by a radiograph.
- Tighten the abutment screw to 35 Ncm using the Multi-unit Screwdriver.

Available articles

Art. No.	Product name	Platform	Height	Ø	Material
30885	Multi-unit Abutment Brånemark System NP 4mm	NP	4	4.8	Ti
30888	Multi-unit Abutment Brånemark System RP 7mm	RP	7	4.8	Ti
30889	Multi-unit Abutment Brånemark System RP 9mm	RP	9	4.8	Ti
30890	Multi-unit Abutment Brånemark System WP 4mm	WP	4	6.0	Ti

All measurements in mm.

All abutments include a disposable plastic mounting device.

Standard Abutment components.



Permanent abutment on which a multiple-unit prosthetic restoration is screw-retained. Replacement parts are abutment screws and supplementary products.

Contraindication: Single-unit restorations.

Procedure

- Connect the abutment to the implant with the manual internal hexagon abutment screwdriver. Ensure that the abutment interlocks with the implant's external hexagon.
- Verify with a radiograph that the abutment is completely seated on the implant before tightening the abutment screw to 35 Ncm.

Available articles

Art. No.	Product name	Platform	Height	Material
SDCA 069-0	Abutment Screw RP 3 mm	RP	3	Ti-Alloy
SDCA 009-0	Abutment Screw RP 4 mm	RP	4	Ti-Alloy
SDCA 008-0	Abutment Screw RP 5.5 mm	RP	5.5	Ti-Alloy
SDCA 007-0	Abutment Screw RP 7 mm	RP	7	Ti-Alloy

All measurements in mm.

Supplementary products

DCD 045-0 Healing Cap Small NP/RP
 DCB 175-0 Abutment Replica Standard
 DCC 026-0 Impression Coping Squared Complete

EsthetiCone™ Abutment.



Permanent abutment on which a multiple-unit prosthetic restoration is screw-retained.

Contraindication: Single-unit restorations.

Procedure

- Connect the abutment to the implant with the manual internal hexagon abutment screwdriver. Ensure that the abutment interlocks with the implant's external hexagon.
- Verify with a radiograph that the abutment is completely seated on the implant before tightening the abutment screw to 35 Ncm.

Available articles

Art. No.	Product name	Platform	Height	Ø	Material
SDCA 134-0	Abutment Complete EsthetiCone 1 mm	RP	1	4.8	Ti
SDCA 135-0	Abutment Complete EsthetiCone 2 mm	RP	2	4.8	Ti
SDCA 136-0	Abutment Complete EsthetiCone 3 mm	RP	3	4.8	Ti
SDCA 137-0	Abutment Screw EsthetiCone 1 mm	RP	1	-	Ti-Alloy
SDCA 138-0	Abutment Screw EsthetiCone 2 mm	RP	2	-	Ti-Alloy
SDCA 139	Abutment Screw EsthetiCone 3 mm	RP	3	-	Ti-Alloy

All measurements in mm.

Supplementary products

DCD 104-0 Healing Cap Conical NP/RP

DCB 176-0 Abutment Replica Conical

DCB 106-0 Impression Coping EsthetiCone & Angulated Abutment

Angulated Abutment – compatible with EsthetiCone™ Abutment.



Permanent abutment on which a multiple-unit prosthetic restoration is screw-retained. The angulated abutments 17° and 30° are only intended when the implant inclination is unfavorable to the desired position of the screw access hole.

Contraindication: Single-unit restorations.

Procedure

- Connect the abutment in one of 12 possible positions to the implant with the Manual Screwdriver Unigrip. Ensure that the abutment interlocks with the implant's external hexagon.
- Verify with a radiograph that the abutment is completely seated on the implant before manually tightening the abutment screw to 15Ncm.

Available articles

Art. No.	Product name	Platform	Angulation	Height	∅	Material
30931	Abutment Angulated with Screw 17° 2mm RP	RP	17°	2	5	Ti
30932	Abutment Angulated with Screw 17° 3mm RP	RP	17°	3	5	Ti
30935	Abutment Angulated with Screw 30° 4mm RP	RP	30°	4	5	Ti

All measurements in mm.

Supplementary products

DCD 104-0 Healing Cap Conical NP/RP

DCB 176-0 Abutment Replica Conical

DCB 106-0 Impression Coping EsthetiCone & Angulated Abutment

Novum components.



Permanent bar construction on which a bridge is screw-retained.

Contraindication: Single-unit restorations.

Protocol for exchanging Novum implant(s) with conventional implants

- Remove the loose Novum implant(s) and replace them with conventional implant(s) after adequate healing period (Note: Brånemark System Novum implants are not available).
- If applicable, place abutments on the conventional implant(s) or connect impression coping(s).
- Place Impression Coping to Fixture Novum (Art.No. 29781) on the Novum implant(s).
- Make a cast (model) using Replica(s) Fixture Novum (Art.No. 27278) and replica(s) for the used conventional implant(s).
- Make an impression.
- Fabricate a Procera Implant Bridge using standard components.
- Attach bridge to conventional implant(s) following standard procedures.
- Attach bridge to Novum implant(s) with Lower Bar Screw Unigrip (Art.No. 27266) and tighten to 35Ncm.

Available articles

Art. No.	Product name
29781	Impression Coping to Fixture Novum
27266	Lower Bar Screw UniGrip Novum 3-pack
27257	Prosthetic Screw UniGrip Novum 2-pack
27251	Upper Bar Novum
27279	Replica Lower Bar Novum
27278	Replica Fixture Novum

Healing Abutment.



Temporary abutment which allows for the formation of a soft tissue collar around the implant.

Contraindication: Support of a temporary restoration.

Procedure

- Connect the Healing Abutment to the implant with the Screwdriver Hex 0.050".
- Verify with a radiograph that the abutment is completely seated on the implant.

Available articles

Art. No.	Product name	Implant	Height	Ø	Material
2385	Healing Abutment Ø 4.5x3 mm 3.25 HL	Steri-Oss	3	3.25	Ti-Alloy
2213	Healing Abutment Ø 4.5x3 mm 3.8/4.5 HL	Steri-Oss	3	3.8/4.5	Ti-Alloy
35300	Healing Abutment Ø 3.5x3 mm 3.5 RPL	Replace Hex	3	3.5	Ti-Alloy
43300	Healing Abutment Ø 4.3x3 mm 4.3 RPL	Replace Hex	3	4.3	Ti-Alloy
5013	Healing Abutment Ø 6.0x3 mm 5.0 HL/RPL	Steri-Oss Replace Hex	3	5.0	Ti-Alloy
6100	Healing Abutment Ø 6.0x3 mm 6.0 HL/RPL	Steri-Oss Replace Hex	3	6.0	Ti-Alloy

All measurements in mm.

Supplementary products

- 2085 Screwdriver Hex 0.050" Length 0.75"
- 2086 Screwdriver Hex 0.050" Length 1.25"

Direct Abutment Engaging.



This device is processed by the dental laboratory and is intended as a permanent abutment for a screw-retained single-unit restoration.

Procedure

- The dental laboratory processes the Direct Abutment.
- Tighten the abutment with the Screwdriver Hex 0.050". Ensure that the abutment interlocks with the implant's external hex.
- Verify with a radiograph that the abutment is completely seated on the implant before tightening to 35 Ncm.

Available articles

Art. No.	Product name	Implant	Height	Ø	Material
2384	Direct Abutment Engaging Plastic 3.25 HL	Steri-Oss	12	3.25	Plastic
2262	Direct Abutment Engaging Plastic 3.8/4.5 HL	Steri-Oss	12	3.8/4.5	Plastic
35511	Direct Abutment Engaging Gold/Plastic 3.5 RPL	Replace Hex	12	3.5	Gold Alloy/Plastic Sleeve
43511	Direct Abutment Engaging Gold/Plastic 4.3 RPL	Replace Hex	12	4.3	Gold Alloy/Plastic Sleeve
5100	Direct Abutment Engaging Gold/Plastic 5.0 HL/RPL	Steri-Oss Replace Hex	12	5.0	Gold Alloy/Plastic Sleeve
6105	Direct Abutment Engaging Gold/Plastic 6.0 HL/RPL	Steri-Oss Replace Hex	12	6.0	Gold Alloy/Plastic Sleeve

All measurements in mm.

Chemical composition		Melting range	Coeff of thermal expansion
Element	% by weight		
Au	60	1400 – 1490 °C	12.4 µm/m·K at 600°C
Pt	19		
Pd	20		
Ir	1		

Recommended casting on alloys

Ceramic bonding alloys: High gold content (min. 75% Au) alloys, standard ISO / DIS9693, NIOM type a.

Conventional gold alloys: High gold content (min. 75% Au + Pt metal), standard ISO 1562 type 4.

Solder working in the range of 800°C is recommended.

Supplementary products

2085 Screwdriver Hex 0.050" Length 0.75"

2086 Screwdriver Hex 0.050" Length 1.25"

31532 Transfer Assembly Hex Open Tray 4.5D 4.3 RPL

43708 Polishing Cap Implant 4.3 RPL 4/pkg

43714 Implant Analog 4.3 RPL

Direct Abutment Non-Engaging.



This device is processed by the dental laboratory and is intended as a permanent abutment for a splinted multiple-unit screw-retained restoration.

Procedure

- The dental laboratory processes the splinted framework/restoration.
- Tighten the restoration with the Screwdriver Hex 0.050". Ensure that the abutments interlock with the implant's external hex.
- Verify with a radiograph that the abutments are completely seated on the implants before tightening to 35 Ncm.

Available articles

Art. No.	Product name	Implant	Height	Ø	Material
5101	Direct Abutment Non-Engaging Gold/Plastic 5.0 HL/RPL	Steri-Oss Replace Hex	12	5.0	Gold Alloy/Plastic Sleeve
6106	Direct Abutment Non-Engaging Gold/Plastic 6.0 HL/RPL	Steri-Oss Replace Hex	12	6.0	Gold Alloy/Plastic Sleeve
35513	Direct Abutment Non-Engaging Gold/Plastic 3.5 RPL	Replace Hex	12	3.5	Gold Alloy/Plastic Sleeve
43513	Direct Abutment Non-Engaging Gold/Plastic 4.3 RPL	Replace Hex	12	4.3	Gold Alloy/Plastic Sleeve

All measurements in mm.

Chemical composition		Melting range	Coeff of thermal expansion
Element	% by weight		
Au	60	1400 – 1490 °C	12.4 µm/m·K at 600°C
Pt	19		
Pd	20		
Ir	1		

Recommended casting on alloys

Ceramic bonding alloys: High gold content (min. 75% Au) alloys, standard ISO / DIS9693, NIOM type a.

Conventional gold alloys: High gold content (min. 75% Au + Pt metal), standard ISO 1562 type 4.

Solder working in the range of 800°C is recommended.

Supplementary products

2085 Screwdriver Hex 0.050" Length 0.75"

2086 Screwdriver Hex 0.050" Length 1.25"

31532 Transfer Assembly Hex Open Tray 4.5D 4.3 RPL

43708 Polishing Cap Implant 4.3 RPL 4/pkg

43714 Implant Analog 4.3 RPL

PME Transmucosal Abutment components.



The PME Transmucosal Abutment is used for a multiple-unit screw-retained prosthesis on implants with up to 40° divergence between them. All components can be used for Steri-Oss, Replace Hex and Replace Select.

Contraindication: Single-unit restorations.

Procedure

- Tighten the PME Transmucosal Abutments to the implants with the Transmucosal Abutment Wrench to 35 Ncm.
- Tighten the restoration to the abutments to 35 Ncm.

Available articles

Art. No.	Product name
31705	PME Abutment Analog
2149	PME Coping Gold/Plastic
31708	PME Impression Coping Open Tray
2496	PME Temporary Coping
2476	Torque Wrench Insert Transmucosal Abutment
2346	Coping Screw Hex 2 mm 4/pkg

O-Ring Abutment components.



Permanent abutment for implant-retained, tissue-supported overdentures, typically with two or more relatively parallel (<10°) implants.

Procedure

Place the O-Ring Abutment and tighten to 35Ncm.

Contraindications: Single-unit restorations and restorations on implants that are shorter than 13 mm.

Available articles

Art. No.	Product name
2493	O-Ring Abutment Analog with Spacer 2/pkg
2078	O-Ring Clinical White 12/pkg
2413	Retainer Ring 2/pkg

Cleaning and sterilization.

Sterile components

The devices delivered sterile have a “Sterile” marking on the label. Opened packages of components that have never entered the oral cavity of a patient may be cleaned and sterilized/ autoclaved again following the procedures stated below.



Abutments and plastic copings

Multi-unit Abutment, Snappy Abutment, QuickTemp Abutment, and Immediate Temporary Abutment are delivered sterile. If re-sterilization is required, use steam sterilization for 5 minutes at 135°C/274°F.

Notes:

- For re-sterilization of straight Multi-unit Abutment, remove plastic holder prior to procedure.
- Sterile plastic copings are for single-use only and should not be re-sterilized.

Non-sterile components

Care and maintenance of reusable instruments and drills are crucial for successful treatment. Well-maintained instruments not only safeguard your patients and staff against infection, but are also essential for the outcome of the total treatment.

Abutments and plastic copings

Abutments made of titanium, gold alloy, and plastic (PEEK) are delivered non-sterile. It is recommended to sterilize the abutment prior to placing it in the oral cavity. For sterilization, use steam sterilization for 5 minutes at 135°C/274°F.

Notes:

- If modifications have been made to the abutment, clean the abutment prior to sterilization.
- Non-sterile plastic copings should not be re-sterilized, as they are for single-use only.

Step-by-step instructions

1 Pre-cleaning

1. Remove residual tissue or bone by immersing the used instruments in cold water (<40°C/104°F). Do not use fixation agents or hot water (>40°C/104°F) as this could influence subsequent cleaning results. Instruments should be kept in a wet environment until the next step is initiated.
2. Soak the instruments in 0.5% enzymatic cleaning solution (e.g enzymatic detergent with a pH level between 6–9) prepared with luke warm tap water for 5 minutes. Cleaning agents are available commercially. Please ask your supplier for details.
3. Scrub the outer, and if applicable also inner side of the instruments with a suitable soft-bristled nylon brush until all visible soil is removed.
4. Rinse outer and inner sides of the instruments with tap water to remove all cleaning solution.

2 Automated cleaning, disinfection, and drying

1. Place the instruments in the surgery kit on an instrument rack and load the instrument rack into the washer/disinfector. Start the cycle by applying the following:
 - a. 2 minutes pre-cleaning with cold water and emptying.
 - b. 5 minutes cleaning at 55°C/131°F with 0.5% cleaner Neodisher mediclean (Enzyme, NTA, Tenside) or equivalent (if Neodisher mediclean is not available in your market) and emptying.
 - c. 3 minutes neutralization with tap water and emptying.
 - d. 2 minutes intermediate rinsing with cold tap water and emptying.
2. Special instructions provided by the manufacturers of automated washing machines must be followed. Cleaning disinfectants are available commercially.
3. Dry the outer side of the instruments through drying



cycle of washer/disinfector.

4. If needed, additional manual drying can be performed with a lint-free towel. Insufflate cavities of instruments by using sterile compressed air.

3 Functional testing and maintenance

Visually inspect for cleanliness with magnifying glasses. If necessary, perform reprocessing process again until the instruments are visibly clean.

Packaging

Place instruments in sterilization packets.

Sterilization

Sterilize the instruments by applying a fractionated pre-vacuum process (according to ISO 13060 / ISO 17665) following any respective country requirements.

Parameters for the pre-vacuum cycle:

- 3 pre-vacuum phases with at least 60 millibar

New cycle:

- Heat up to a minimum sterilization temperature of 132°C–134°C/269.6°F–273.2°F
- Maximum temperature: 135°C/274°F
- Minimum holding time: 3 minutes
- Drying time: minimum 10 minutes

Storage

Store sterilized instruments in a dry, clean, and dust-free environment at modest temperatures of 5°C to 40°C/41°F–104°F.

Articles by implant brand.

Brånemark System

Multi-unit Abutments

Multi-unit Abutment Brånemark System NP 4 mm	30885
Multi-unit Abutment Brånemark System RP 7 mm	30888
Multi-unit Abutment Brånemark System RP 9 mm	30889
Multi-unit Abutment Brånemark System WP 4 mm	30890

Angulated Abutment Components

Abutment Angulated with Screw 17° 2 mm RP	30931
Abutment Angulated with Screw 17° 3 mm RP	30932
Abutment Angulated with Screw 30° 4 mm RP	30935
Abutment Replica Conical	DCB 176-0
Impression Coping EsthetiCone & Angulated Abutment	DCB 106-0
Healing Cap Conical NP/RP	DCD 104-0

Standard Abutment Components

Abutment Screw RP 3 mm	SDCA 069-0
Abutment Screw RP 4 mm	SDCA 009-0
Abutment Screw RP 5.5 mm	SDCA 008-0
Abutment Screw RP 7 mm	SDCA 007-0
Healing Cap Small NP/RP	DCD 045-0
Impression Coping Squared Complete	DCC 026-0
Abutment Replica Standard	DCB 175-0

EsthetiCone Abutment

Abutment Complete EsthetiCone 1 mm	SDCA 134-0
Abutment Complete EsthetiCone 2 mm	SDCA 135-0
Abutment Complete EsthetiCone 3 mm	SDCA 136-0
Abutment Screw EsthetiCone 1 mm	SDCA 137-0
Abutment Screw EsthetiCone 2 mm	SDCA 138-0
Abutment Screw EsthetiCone 3 mm	SDCA 139
Healing Cap Conical NP/RP	DCD 104-0
Abutment Replica Conical	DCB 176-0
Impression Coping EsthetiCone & Angulated Abutment	DCB 106-0

Novum Components

Impression Coping to Fixture Novum	29781
Lower Bar Screw UniGrip Novum 3-pack	27266
Prosthetic Screw UniGrip Novum 2-pack	27257
Upper Bar Novum	27251
Replica Lower Bar Novum	27279
Replica Fixture Novum	27278

Brånemark System Miscellaneous**Gold Cylinder**

Gold Cylinder with Chamfer Conical	DCB 141-0
------------------------------------	-----------

Overdenture Treatment – Components

Ball Attachment Replica	DCD 111-0
Plastic Cap with O-Ring	DCB 113-0
O-Ring Rubber	DCA 109-0

Screwdrivers

Screwdriver Hexagon 27 mm	DIA 313-0
Screwdriver Medium 37 mm	DIB 047-0
Screwdriver Slot short 27 mm	DIB 048-0
Machine Screwdriver Hex long	DIA 187-0
Machine Screwdriver Slot long	DIA 189-0
Machine Screwdriver Slot short	DIA 188-0

Screws

Converter Screw Titanium Unigrip Fit Ø3	32978
Coronal Screw Set 3.25 Non-Hex	2456
Coronal Screw Set 3.8 Non-Hex	2464
Prosthetic Screw Conical	32981
Prosthetic Screw Internal Hexagon	32983
Prosthetic Screw Multi-unit Slot NP/RP	32980
Prosthetic Screw Slot	32982

Replace External Hex**Healing Abutments**

Healing Abutment Ø 3.5 × 3mm 3.5 RPL Hex	35300
Healing Abutment Ø 4.3 × 3mm 4.3 RPL Hex	43300
Healing Abutment Ø 6.0 × 3mm 5.0 HL/RPL Hex	5013
Healing Abutment Ø 6.0 × 3mm 6.0 HL/RPL Hex	6100
Screwdriver Hex 0.050" Length 0.75"	2085
Screwdriver Hex 0.050" Length 1.25"	2086

Direct Abutments

Direct Abutment Engaging Gold/Plastic 3.5 RPL Hex	35511
Direct Abutment Engaging Gold/Plastic 4.3 RPL Hex	43511
Direct Abutment Engaging Gold/Plastic 5.0 HL/RPL Hex	5100
Direct Abutment Engaging Gold/Plastic 6.0 HL/RPL Hex	6105
Direct Abutment Non-Engaging Gold/Plastic 3.5 RPL Hex	35513
Direct Abutment Non-Engaging Gold/Plastic 4.3 RPL Hex	43513
Direct Abutment Non-Engaging Gold/Plastic 5.0 HL/RPL Hex	5101
Direct Abutment Non-Engaging Gold/Plastic 6.0 HL/RPL Hex	6106
Screwdriver Hex 0.050" Length 0.75"	2085
Screwdriver Hex 0.050" Length 1.25"	2086
Transfer Assembly Hex Open Tray 4.5D 4.3 RPL Hex	31532
Implant Analog 4.3 RPL Hex	43714
Polishing Cap Implant 4.3 RPL Hex 4/pkg	43708

PME Transmucosal Abutment Components

PME Abutment Analog	31705
PME Coping Gold/Plastic	2149
PME Impression Coping Open Tray	31708
PME Temporary Coping	2496
Coping Screw Hex 2 mm 4/pkg	2346
Torque Wrench Insert Transmucosal Abutment	2476

O-Ring Abutment Components

O-Ring Abutment Analog with Spacer 2/pkg	2493
O-Ring Clinical White 12/pkg	2078
Retainer Ring 2/pkg	2413

Transfer Impression Copings

Transfer Assembly Hex Open Tray 3.5 mmD, 3.5 Replace Hex	31531
Transfer Assembly Hex Open Tray 4.5 mmD, 4.3 Replace Hex	31532
Transfer Assembly Hex Open Tray 6.0 mmD, 5.0 HL/Replace Hex	31533
Transfer Assembly Hex Open Tray 6.0 mmD, 6.0 HL/Replace Hex	31534
Screwdriver Hex 0.050" Length 0.75"	2085
Screwdriver Hex 0.050" Length 1.25"	2086

Steri-Oss**Healing Abutments**

Healing Abutment Ø 4.5 × 3mm 3.25 HL	2385
Healing Abutment Ø 4.5 × 3mm 3.8/4.5 HL	2213
Healing Abutment Ø 6.0 × 3mm 5.0 HL/RPL Hex	5013
Healing Abutment Ø 6.0 × 3mm 6.0 HL/RPL Hex	6100
Screwdriver Hex 0.050" Length 0.75"	2085
Screwdriver Hex 0.050" Length 1.25"	2086

Direct Abutments

Direct Abutment Engaging Gold/Plastic 5.0 HL/RPL Hex	5100
Direct Abutment Engaging Gold/Plastic 6.0 HL/RPL Hex	6105
Direct Abutment Non-Engaging Gold/Plastic 5.0 HL/RPL Hex	5101
Direct Abutment Non-Engaging Gold/Plastic 6.0 HL/RPL Hex	6106
Direct Abutment, Engaging, Plastic 3.25 HL	2384
Direct Abutment, Engaging, Plastic, 3.8/4.5 HL	2262
Screwdriver Hex 0.050" Length 0.75"	2085
Screwdriver Hex 0.050" Length 1.25"	2086
Transfer Assembly Hex Open Tray 4.5D 4.3 RPL Hex	31532
Implant Analog 4.3 RPL Hex	43714
Polishing Cap Implant 4.3 RPL Hex 4/pkg	43708

PME Transmucosal Abutment Components

PME Abutment Analog	31705
PME Coping Gold/Plastic	2149
PME Impression Coping Open Tray	31708
PME Temporary Coping	2496
Coping Screw Hex 2mm 4/pkg	2346
Torque Wrench Insert Transmucosal Abutment	2476

O-Ring Abutment Components

O-Ring Abutment Analog with Spacer 2/pkg	2493
O-Ring Clinical White 12/pkg	2078
Retainer Ring 2/pkg	2413

Transfer Impression Copings

Transfer Assembly Hex Open Tray 4.5mmD, 3.25 HL	31530
Transfer Assembly Hex Open Tray, 4.5mmD, 3./4.5 HL	31709
Transfer Assembly Hex Open Tray 6.0mmD, 5.0 HL/Replace Hex	31533
Transfer Assembly Hex Open Tray 6.0mmD, 6.0 HL/Replace Hex	31534
Thread Timed Transfer Pin 3.25 Non-Hex	31529
Screwdriver Hex 0.050" Length 0.75"	2085
Screwdriver Hex 0.050" Length 1.25"	2086

Coronal Screw Sets

Coronal Screw Set 3.25 Non-Hex	2456
Coronal Screw Set 3.8 Non-Hex	2464
Screwdriver Hex 0.050" Length 0.75"	2085
Torque Wrench Insert Hex 0.050" Short	2472

Steri-Oss Miscellaneous**Screwdrivers**

Screwdriver Hex 0.050" Length 0.75"	2085
Screwdriver Hex 0.050" Length 1.25"	2086
Torque Wrench Insert Hex 0.050" Long	2473
Torque Wrench Insert Hex 0.050" Short	2472
Torque Wrench Insert Transmucosal Abutment	2476
O-Ring for Tools 2 sets of 5/pkg	61760

Screws

Abutment Screw TorqTite 3.25 HL/3.5 RPL	61979
Abutment Screw TorqTite 3.8-6.0 HL/RPL	2699
Coping Screw Hex 2 mm 4/pkg	2346

Implant Analogs

Implant Analog, Non-Hex	31706
Implant Analog 5.0 HL/Replace Hex	5052
Implant Analog 3.5 mm/Replace Hex	35706
Implant Analog 4.3 mm/Replace Hex	43714
Implant Analog, 3.8/4.5 HL	2687
Implant Analog, 6.0 HL/Replace Hex	6129

Abutment Analogs

PME Abutment Analog	31705
O-Ring Abutment Analog with Spacer 2/pkg	2493

Surgical and Prosthetic Accessories

Thread Cleaning Tap 3.25/3.8mm Non-Hex	2148
PME Temporary Coping	2496
Torque Wrench Unigrip Adapter	29171

Replace Select**PME Transmucosal Abutment Components**

PME Abutment Analog	31705
PME Coping Gold/Plastic	2149
PME Impression Coping Open Tray	31708
PME Temporary Coping	2496
Polishing Cap Implant 4.3 RPL Hex 4/pkg	43708
Coping Screw Hex 2 mm 4/pkg	2346

NobelActive, NobelReplace and Brånemark System (current brands)**Manual Torque Wrench Adapter Surgical components**

O-Ring for Brånemark System® Wrench (5 pkg)	37327
O-Ring for NobelActive and Replace Wrench	35675

Miscellaneous**Components for Platform Shifting (PS)**

Abutment Screw PS RP-NP	34553
Abutment Screw PS WP-RP	34554
Adapter PS RP-NP	34551
Adapter PS WP-RP	34552

Articles in numerical order.

2078	O-Ring Clinical White 12/pkg
2085	Screwdriver Hex 0.050" Length 0.75"
2086	Screwdriver Hex 0.050" Length 1.25"
2148	Thread Cleaning Tap 3.25/3.8 mm Non-Hex
2149	PME Coping Gold/Plastic
2213	Healing Abutment Ø 4.5 × 3 mm 3.8/4.5 HL
2262	Direct Abutment Engaging Plastic 3.8/4.5 HL
2346	Coping Screw Hex 2 mm 4/pkg
2384	Direct Abutment Engaging Plastic 3.25 HL
2385	Healing Abutment Ø 4.5 × 3 mm 3.25 HL
2413	Retainer Ring 2/pkg
2456	Coronal Screw Set 3.25 Non-Hex
2464	Coronal Screw Set 3.8 Non-Hex
2472	Torque Wrench Insert Hex 0.050" Short
2473	Torque Wrench Insert Hex 0.050" Long
2476	Torque Wrench Insert Transmucosal Abutment
2493	O-Ring Abutment Analog with Spacer 2/pkg
2496	PME Temporary Coping Hex
2687	Implant Analog 3.8/4.5 HL
2699	Abutment Screw TorqTite 3.8-6.0 HL/RPL
5013	Healing Abutment Ø 6.0 × 3 mm 5.0 HL/RPL Hex
5052	Implant Analog 5.0 HL/RPL
5100	Direct Abutment Engaging Gold/Plastic 5.0 HL/RPL Hex
5101	Direct Abutment Non-Engaging Gold/Plastic 5.0 HL/RPL Hex
6100	Healing Abutment Ø 6.0 × 3 mm 6.0 HL/RPL Hex
6105	Direct Abutment Engaging Gold/Plastic 6.0 HL/RPL Hex
6106	Direct Abutment Non-Engaging Gold/Plastic 6.0 HL/RPL Hex
6129	Implant Analog 6.0 HL/RPL
27251	Upper Bar Novum
27257	Prosthetic Screw UniGrip Novum 2-pack
27266	Lower Bar Screw UniGrip Novum 3-pack
27278	Replica Fixture Novum
27279	Replica Lower Bar Novum
29171	Torque Wrench Unigrip Adapter
29781	Impression Coping to Fixture Novum
30885	Multi-unit Abutment Brånemark System NP 4 mm
30888	Multi-unit Abutment Brånemark System RP 7 mm
30889	Multi-unit Abutment Brånemark System RP 9 mm

30890	Multi-unit Abutment Brånemark System WP 4 mm
30931	Abutment Angulated with Screw 17° 2 mm RP
30932	Abutment Angulated with Screw 17° 3 mm RP
30935	Abutment Angulated with Screw 30° 4 mm RP
31529	Thread Timed Transfer Pin 3.25 Non-Hex
31530	Transfer Assembly Hex Open Tray 4.5 mmD 3.25 HL
31531	Transfer Assembly Hex Open Tray 4.5 mmD 4.3 RPL
31532	Transfer Assembly Hex Open Tray 4.5 mmD 4.3 RPL Hex
31533	Transfer Assembly Hex Open Tray 6 mmD 5.0 HL/RPL
31534	Transfer Assembly Hex Open Tray 6 mmD 6.0 HL/RPL
31705	PME Abutment Analog
31706	Implant Analog Non-Hex
31708	PME Impression Coping Open Tray
31709	Transfer Assembly Hex Open Tray 4.5 3.8/4.5 HL
32978	Converter Screw Titanium Unigrip Fit Ø3
32980	Prosthetic Screw Multi-unit Slot NP/RP
32981	Prosthetic Screw Conical
32982	Prosthetic Screw Slot
32983	Prosthetic Screw Internal Hexagon
34551	Adapter PS RP-NP
34552	Adapter PS WP-RP
34553	Abutment Screw PS RP-NP
34554	Abutment Screw PS WP-RP
35300	Healing Abutment Ø 3.5 × 3 mm 3.5 RPL Hex
35511	Direct Abutment Engaging Gold/Plastic 3.5 RPL Hex
35513	Direct Abutment Non-Engaging Gold/Plastic 3.5 RPL Hex
35675	O-Ring for NobelActive and Replace Wrench
35706	Implant Analog 3.5 RPL
37327	O-Ring for Brånemark System® Wrench (5 pkg)
43300	Healing Abutment Ø 4.3 × 3 mm 4.3 RPL Hex
43511	Direct Abutment Engaging Gold/Plastic 4.3 RPL Hex
43513	Direct Abutment Non-Engaging Gold/Plastic 4.3 RPL Hex
43708	Polishing Cap Implant 4.3 RPL Hex 4/pkg
43714	Implant Analog 4.3 RPL Hex
61760	O-Ring for Tools 2 sets of 5/pkg
61979	Abutment Screw TorqTite 3.25 HL/3.5 RPL
DCA 109-0	O-Ring Rubber
DCB 106-0	Impression Coping EsthetiCone & Angulated Abutment

DCB 113-0	Plastic Cap with O-Ring
DCB 141-0	Gold Cylinder with Chamfer Conical
DCB 175-0	Abutment Replica Standard
DCB 176-0	Abutment Replica Conical
DCC 026-0	Impression Coping Squared Complete
DCD 045-0	Healing Cap Small NP/RP
DCD 104-0	Healing Cap Conical NP/RP
DCD 111-0	Ball Attachment Replica
DIA 187-0	Machine Screwdriver Hex long
DIA 188-0	Machine Screwdriver Slot short
DIA 189-0	Machine Screwdriver Slot long
DIA 313-0	Screwdriver Hexagon 27 mm
DIB 047-0	Screwdriver Medium 37 mm
DIB 048-0	Screwdriver Slot short 27 mm
SDCA 007-0	Abutment Screw RP 7 mm
SDCA 008-0	Abutment Screw RP 5.5 mm
SDCA 009-0	Abutment Screw RP 4 mm
SDCA 069-0	Abutment Screw RP 3 mm
SDCA 134-0	Abutment Complete EsthetiCone 1 mm
SDCA 135-0	Abutment Complete EsthetiCone 2 mm
SDCA 136-0	Abutment Complete EsthetiCone 3 mm
SDCA 137-0	Abutment Screw EsthetiCone 1 mm
SDCA 138-0	Abutment Screw EsthetiCone 2 mm
SDCA 139	Abutment Screw EsthetiCone 3 mm

Customer service worldwide.

Europe and Russia

Austria

Nobel Biocare Austria
Phone: +43 1 892 89 90

Belgium

Nobel Biocare Belgium
Phone: +32 2 467 41 70

Denmark

Nobel Biocare Denmark
Phone: +45 39 40 48 46

Finland

Nobel Biocare Finland
Phone: +358 9 343 69 70

France

Nobel Biocare France
Phone: +33 1 49 20 00 30

Germany

Nobel Biocare Germany
Phone: +49 221 500 85 590

Hungary

Nobel Biocare Hungary
Phone: +36 1 279 33 79

Ireland

Nobel Biocare Ireland
Phone: toll free 1800 677 306

Italy

Nobel Biocare Italy
Phone: +39 039 683 61
Cust. support: toll free 800 53 93 28

Lithuania

Nobel Biocare Lithuania
Phone: +370 5 268 3448

Netherlands

Nobel Biocare Netherlands
Phone: +31 30 635 4949

Norway

Nobel Biocare Norway
Phone: +47 64 95 75 55

Poland

Nobel Biocare Poland
Phone: +48 22 549 93 50
Cust. support: +48 22 549 93 52

Portugal

Nobel Biocare Portugal
Phone: +351 22 374 73 50
Cust. support: toll free 800 300 100

Russia

Nobel Biocare Russia
Phone: +7 495 974 77 55
Cust. support: toll free 8 800 250 77 55

Spain

Nobel Biocare Spain
Phone: +34 93 508 8800
Cust. support: toll free 900 850 008

Sweden

Nobel Biocare Sweden
Phone: +46 31 335 49 00
Cust. support: +46 31 335 49 10

Switzerland

Nobel Biocare Switzerland
Phone: +41 43 211 53 20

United Kingdom

Nobel Biocare UK
Phone: +44 208 756 3300

North America

Canada

Nobel Biocare Canada
Phone: +1 905 762 3500
Cust. support: +1 800 939 9394

USA

Nobel Biocare USA
Phone: +1 714 282 4800
Cust. support: +1 800 322 5001

Central/South America

Distributor Markets

Brazil

Nobel Biocare Brazil
Phone: +55 11 5102 7000
Cust. support: 0800 169 996

Chile

ECM Ingeniera S.A.
Phone: +56 2 655 5500
Cust. support: +56 2 655 5502

Colombia

Hospimedics S.A.
Phone: +57 1 620 9410
Cust. support: +57 1 620 9410

Mexico

Nobel Biocare Mexico
Phone: +52 55 524 974 60

Asia Pacific

Australia

Nobel Biocare Australia
Phone: +61 2 8064 5100
Cust. support: toll free 1800 804 597

China

Nobel Biocare China
Phone: +86 21 5206 6655
Cust. support: +86 21 5206 0974

Hong Kong

Nobel Biocare Hong Kong
Phone: +852 2845 1266
Cust. support: +852 2823 8926

India

Nobel Biocare India
Phone: +91 22 6751 9999
Cust. support: toll free 1 800 22 9998

Japan

Nobel Biocare Japan
Phone: +81 3 6717 6191

New Zealand

Nobel Biocare New Zealand
Phone: +61 2 8064 5100
Cust. support: toll free 0800 441 657

Singapore

Nobel Biocare Singapore
Phone: +65 6737 7967
Cust. support: +65 6737 7967

Taiwan

Nobel Biocare Taiwan
Phone: +886 2 2793 9933

Africa

South Africa

Nobel Biocare South Africa
Phone: +27 11 802 0112

Europe and Middle East

Distributor Markets

**Bahrain, Bulgaria, Croatia, Cyprus,
Czech Republic, Greece, Iran, Iraq,
Israel, Jordan, Kuwait, Lebanon,
Malta, Oman, Romania, Saudi Arabia,
Serbia, Slovakia, Slovenia, Turkey,
United Arab Emirates, Qatar**

Phone: +48 22 549 93 56
Cust. support: +48 22 549 93 55

