

# NobelProcera<sup>®</sup> Crown in multilayered zirconia



Luc and Patrick Rutten, Tessenderlo, Belgium  
Prosthodontist: Lieve Bevers Antwerp/Belgium

**Patient:**

Male, 63 years, restoring two teeth with crowns

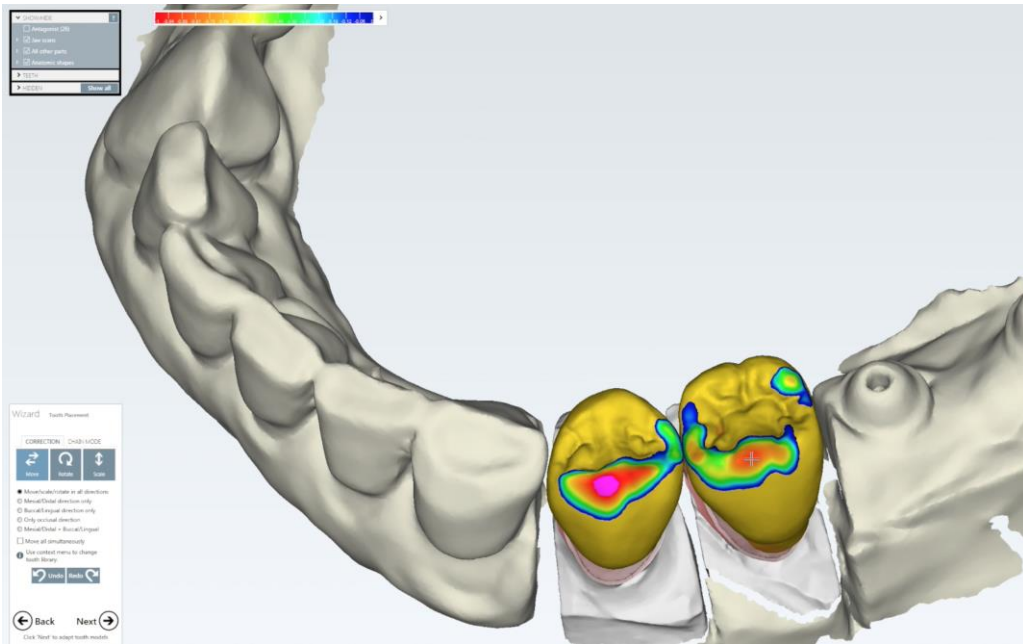
**Restorative solution:**

NobelProcera Crown in high-translucency multilayered (HT ML) full-contour zirconia. Crown in shade ADark (orange-yellow).

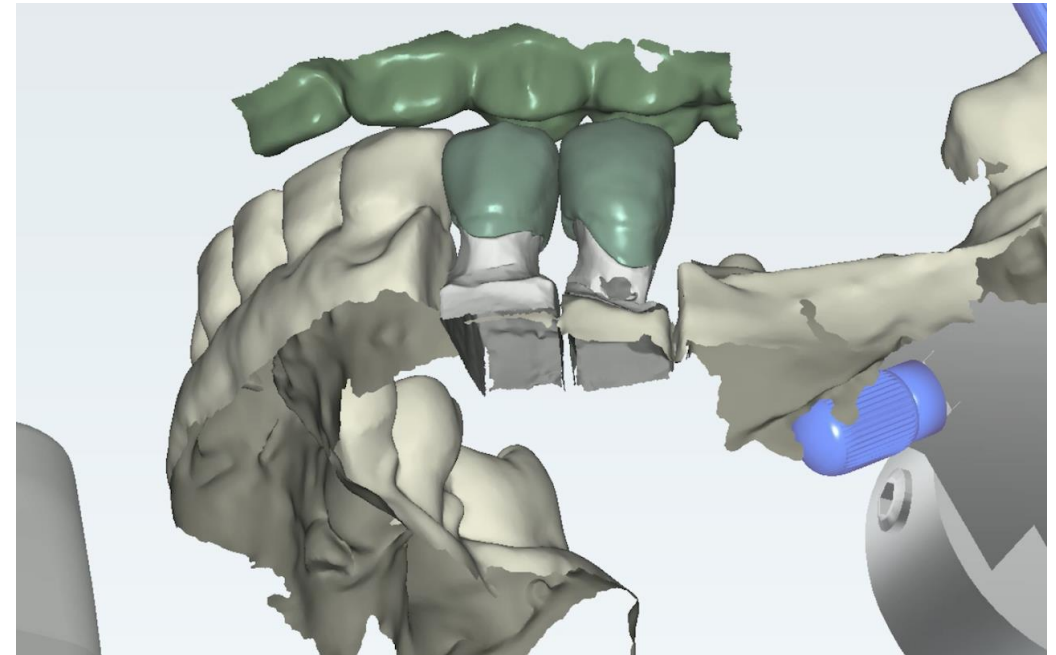
NobelProcera Crown was designed using NobelProcera 2G Scanner and NobelDesign software. Restoration was modified only with stains.

Full-contour zirconia used to reduce risk for chipping.

# NobelProcera® Crown in multilayered zirconia

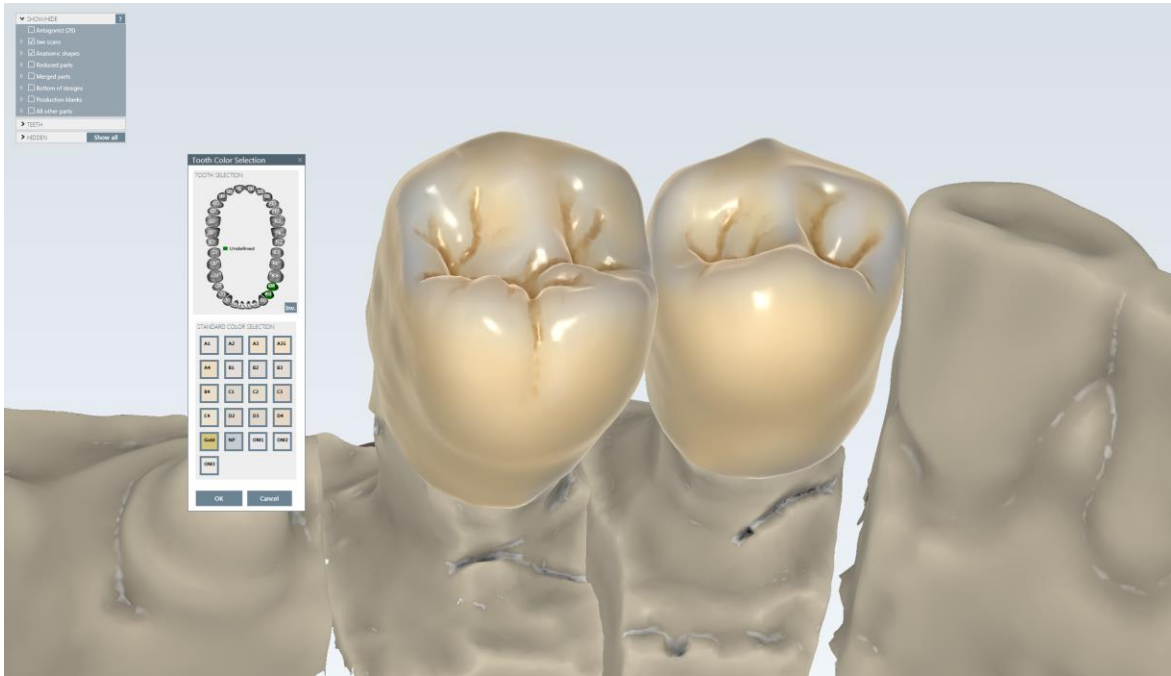


NobelDesign software: Checking occlusal contact areas. Parts highlighted in red are above occlusion and were reduced.



NobelDesign software: Checking canine guidance using a virtual articulator.

# NobelProcera<sup>®</sup> Crown in multilayered zirconia



NobelDesign software: TruSmile displays the expected end result digitally.

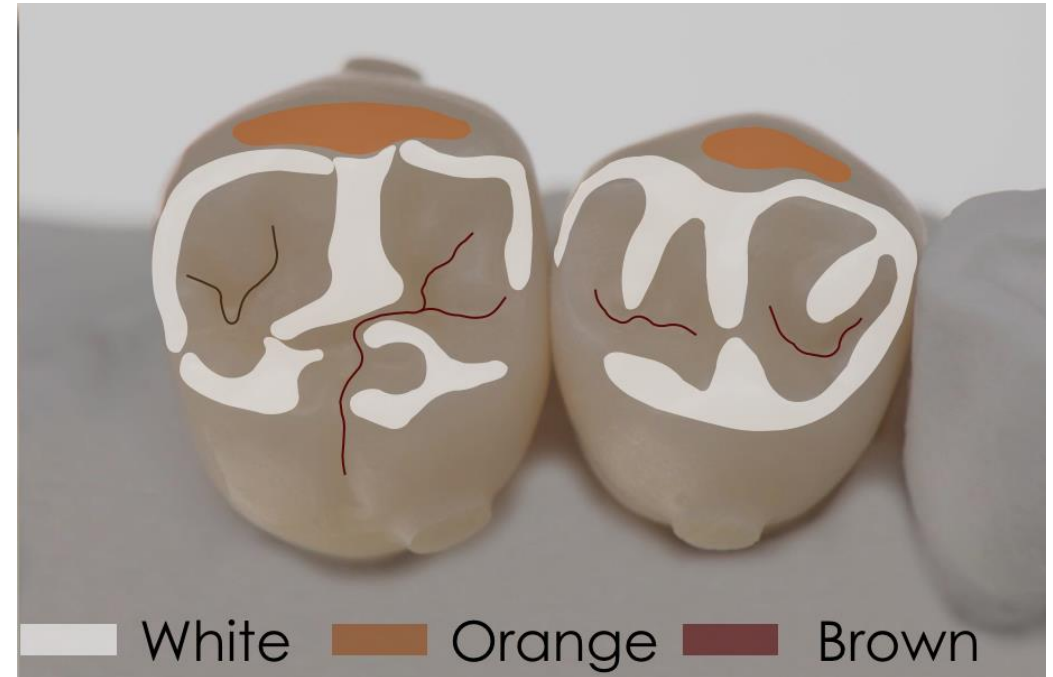


Bisque situation: base shade ADark on the master model with precisely designed contact points and natural occlusal detail.

# NobelProcera® Crown in multilayered zirconia



Stains are mixed into a viscous creamy consistency for easy application.



Detail of the colors used. Stains are applied at highlighted areas.

# NobelProcera® Crown in multilayered zirconia



Natural effects and depth were created using different stain colors.



Tooth characteristics were created using various stains.

# NobelProcera<sup>®</sup> Crown in multilayered zirconia



Finished restorations in patient's mouth with a good match to rest of the dentition.



Image was converted to black and white to check the values.