

Achieve high-esthetic and predictable results using Nobel Biocare's proven solution

1 High primary stability using NobelActive® implants

- Clinically proven implant design
- Unique implant design for high primary stability and esthetic excellence

2 Restorative portfolio with NobelProcera®

- ASC (angulated screw channel) Titanium Abutments, golden hue for natural appearance in the transmucosal zone, customized emergence profile and no intraoral cementation (image A)
- ASC Zirconia Abutments, 100% cement free, full contour zirconia or veneered (page 2, image B)

3 Regenerative solutions using creos™

- Fulfills the functional and esthetic demands by promoting regeneration of bone
- Solid foundation for dental implant treatments



Clinically proven implant design

- **Proven survival after implant repositioning¹.** Reverse-cutting flutes with apical drilling blades allow experienced clinicians to adjust and optimize implant position, especially in extraction socket.
- **Proven clinical success when placed in extraction sockets.** Thread design and apical drilling blades help achieve high primary stability in compromised bone.
- **Consistent long-term bone and soft tissue maintenance.** The back-tapered coronal design, built-in platform shifting and conical connection have been designed to optimize bone and soft tissue volume.

TiUltra™ surface, advanced technology for osseointegration

- Applied in the collar region, it features surface chemistry and topography that are designed to promote **early osseointegration and to support bone stability.**

More than 15 years' clinical experience



85

Clinical studies **published**



5,500+

Patients **treated**



21,000+

NobelActive® implants **placed***

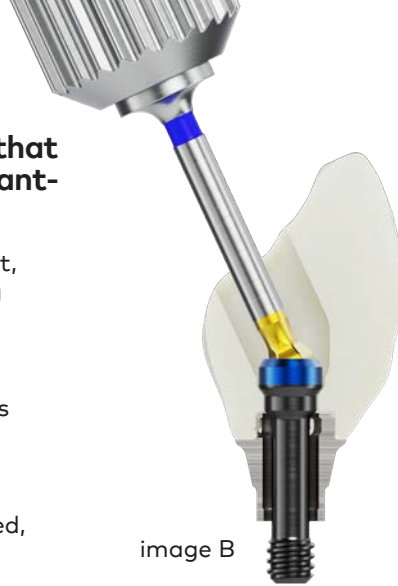


Designed to immediately place and load

* Clinical data combines NobelActive® with both TiUnite® and TiUltra™ surfaces. NobelActive® TiUltra™ launched in 2019.
** Mean survival rate with follow-up of up to 12 years.

NobelProcera® is a premium solution that provides individualized, high-end implant-based restorations

- Achieving a precise fit between the abutment, implant, and clinical screw results in a strong connection, which helps maintain the health of peri-implant hard and soft tissues.
- Opting for a cement-free solution fully avoids the risk associated with cement usage.
- With the angulated screw channel (ASC), gain easy access when vertical space is limited, while optimizing occlusal function. Up to 25° angulation in any direction. More flexibility independent of the implant position.



30+ years
of CAD/CAM production
experience

100%
cement-free options

Pioneer
In premium
customized solutions

creos™ xenogain collagen

- Especially recommended for extraction socket management
- Purified cancellous bovine bone mineral granules and 10% porcine collagen
- Supplied in block shapes and cylindrical shape (in a syringe) for convenient and precise application



Syringe

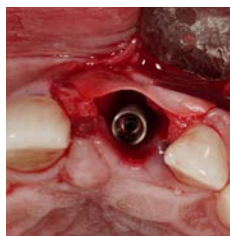


Block

Immediate implant placement in the anterior region using all solutions, from NobelActive® implant and creos™ xenogain to NobelProcera®



Single case in the anterior region



NobelActive® implant placement



Grafting with creos™ xenogain



Soft tissue follow-up after immediate temporization



Final restoration with NobelProcera®

courtesy of Dr. Brian Goodacre



See more clinical cases

1. Cullum D, Hermans M, Hugo O. Long-Term Survival Analysis of 361 Variable Thread Tapered Implants Placed Across a Wide Variety of Indications: Real World Data. Poster presented at: AO 2020 Annual Meeting in Seattle, WA – March 18-21.

