

Nobel Biocare N1™ implant system

Immediate implant placement
and provisionalization in
a posterior site

Dr. Arturo Llobell





Arturo Llobell

Patient

33-year-old female

Clinical situation

Lower right deciduous molar with abfraction, food retention, large amalgam restoration and symptomatology.

Surgical solution

Extraction of the deciduous tooth, immediate placement of the Nobel Biocare N1 Implant and immediate provisional abutment for soft tissue contouring.

Restorative solution

Single screw-retained molar restoration.

Surgery date

March 2021

Total treatment time

5 months

Tooth position

46



Initial clinical situation

Surgical procedure

Restorative procedure

Outcome



Initial clinical situation

Surgical procedure

Restorative procedure

Outcome



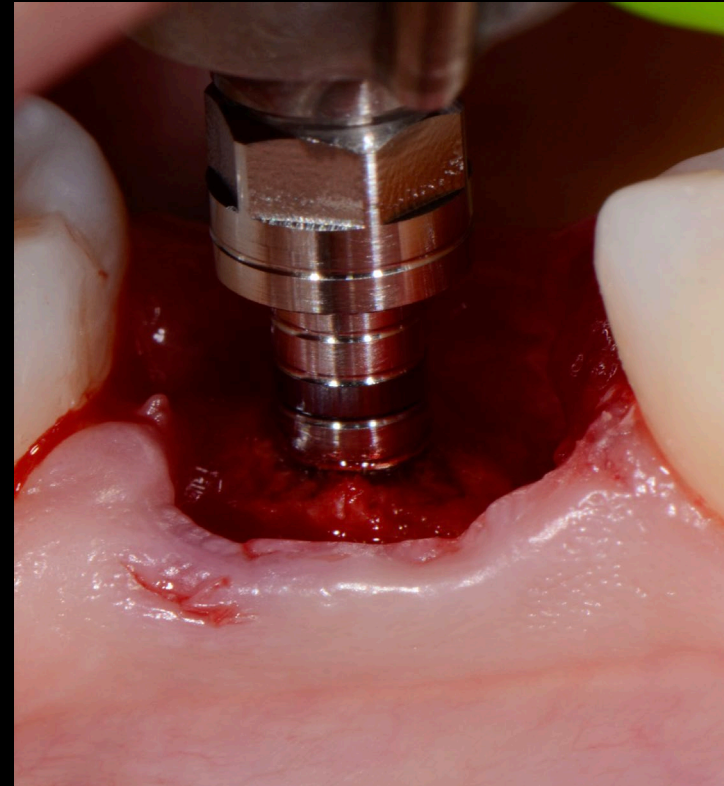
Intraoral view after tooth extraction

Initial clinical situation

Surgical procedure

Restorative procedure

Outcome



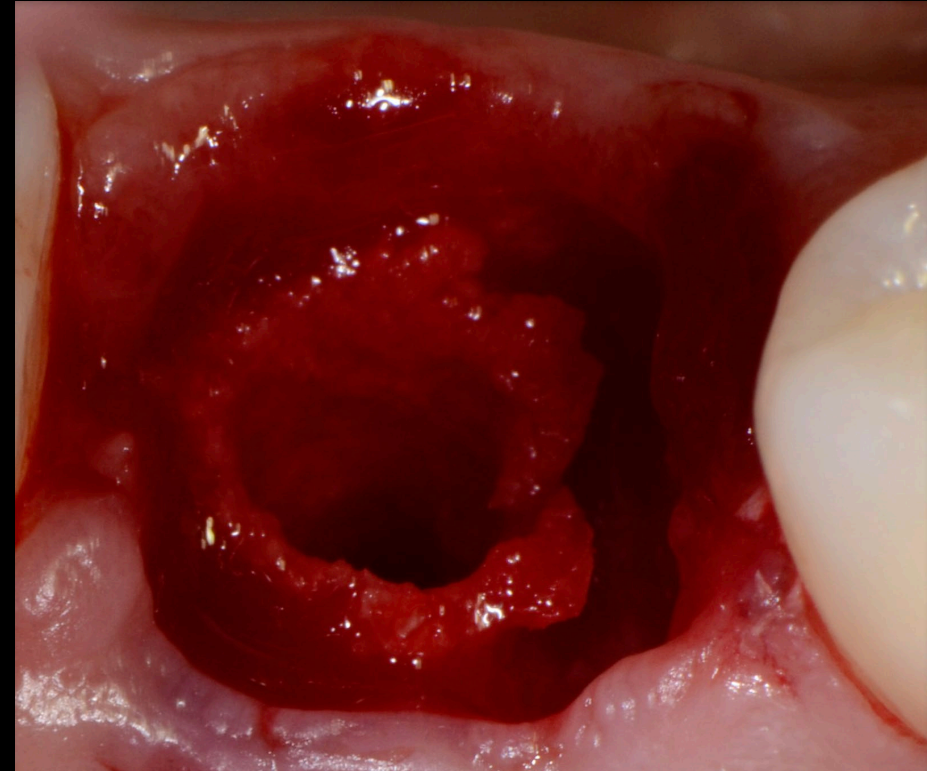
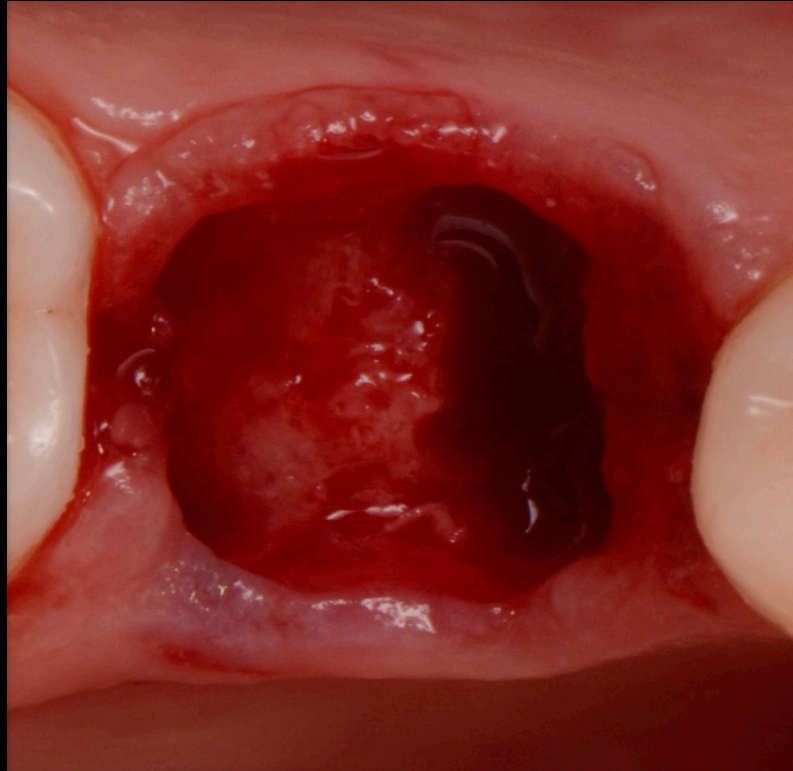
Drilling step with the OsseoShaper™ instrument

Initial clinical situation

Surgical procedure

Restorative procedure

Outcome



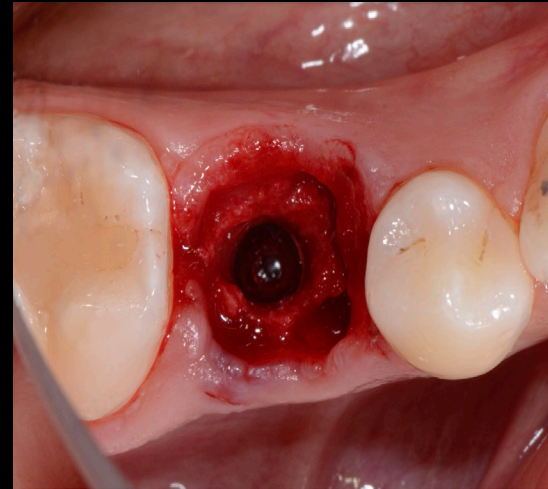
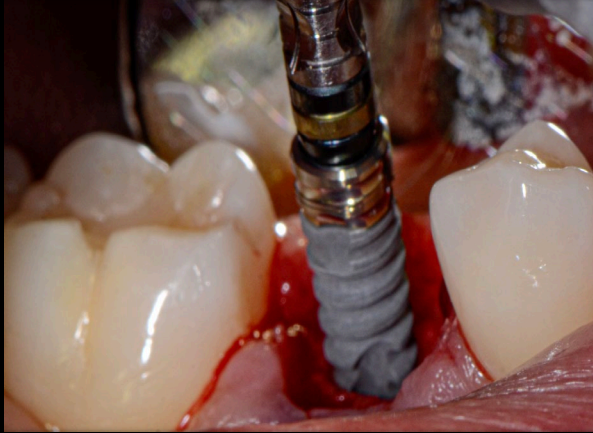
Before and after the drilling sequence

Initial clinical situation

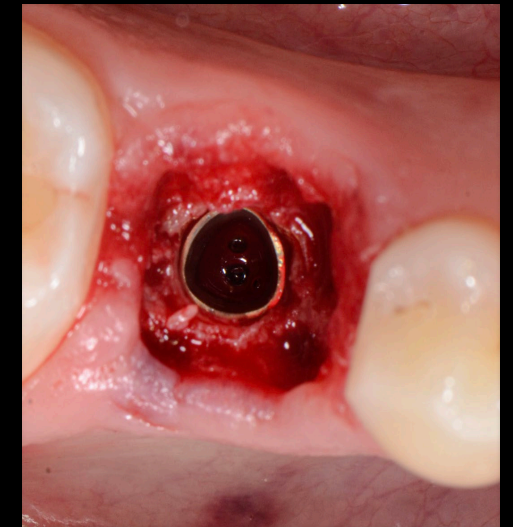
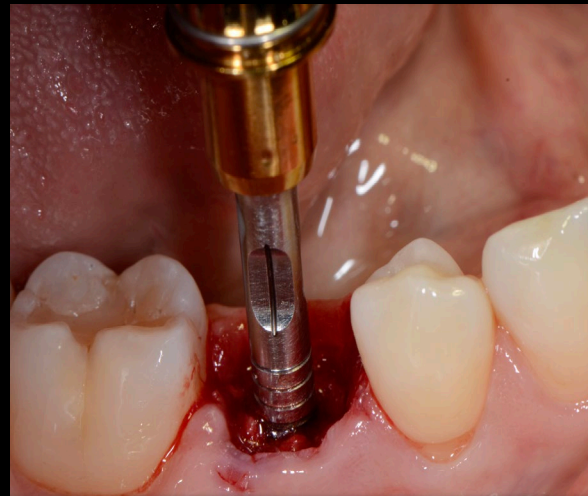
Surgical procedure

Restorative procedure

Outcome



Placement of the Nobel Biocare N1 Implant



**Treatment
planning**

**Surgical
procedure**

**Restorative
procedure**

Outcome



Immediate customized healing abutment using existing tooth



3-month follow-up

Initial clinical situation

Surgical procedure

Restorative procedure

Outcome



3-month follow-up

Initial clinical situation

Surgical procedure

Restorative procedure

Outcome



12-month follow-up

Initial clinical situation

Surgical procedure

Restorative procedure

Outcome



Initial situation

Day of surgery

Try-in

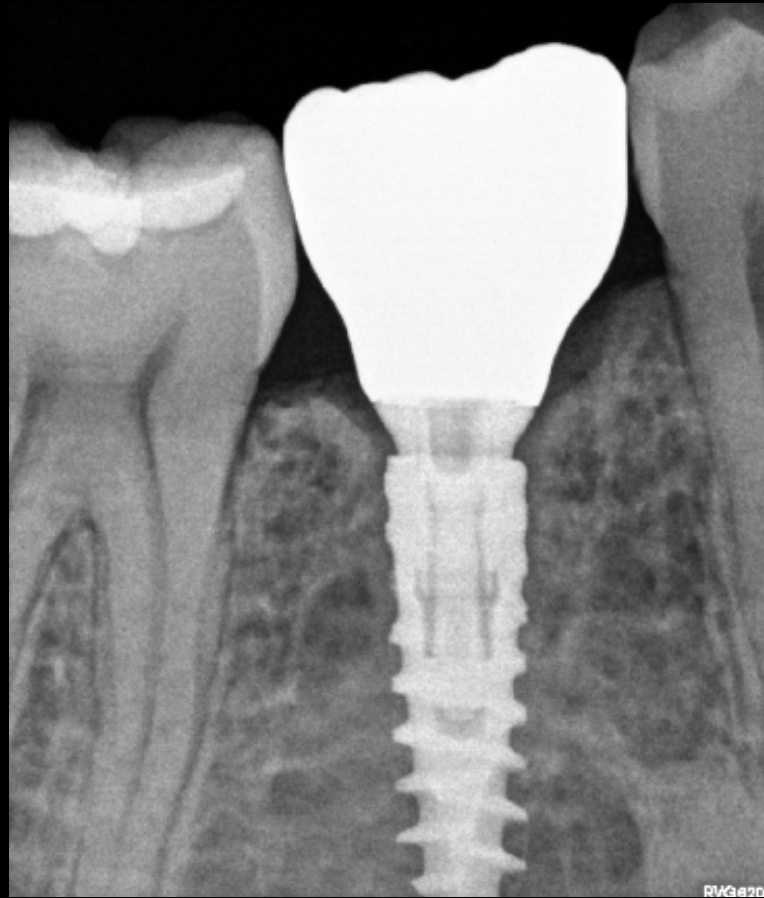
8-month follow-up

Initial clinical situation

Surgical procedure

Restorative procedure

Outcome



12-month follow-up

Case courtesy of Dr. Arturo Llobell



GMT 82052 GB 2303 © Nobel Biocare Services AG, 2023. All rights reserved. Nobel Biocare, the Nobel Biocare logotype and all other trademarks are, if nothing else is stated or is evident from the context in a certain case, trademarks of Nobel Biocare. Please refer to nobelbiocare.com/trademarks for more information. Product images are not necessarily to scale. Disclaimer: Some products may not be regulatory cleared/released for sale in all markets. Please contact the local Nobel Biocare sales office for current product assortment and availability. For prescription use only. Caution: Federal (United States) law restricts this device to sale by or on the order of a licensed clinician, medical professional or physician. See Instructions For Use for full prescribing information, including indications, contraindications, warnings and precautions. Nobel Biocare does not take any liability for any injury or damage to any person or property arising from the use of this clinical case. This clinical case is not intended to recommend any measures, techniques, procedures or products, or give advice, and is not a substitute for medical training or your own clinical judgement as a healthcare professional. Viewers should never disregard professional medical advice or delay seeking medical treatment because of something they have seen in this clinical case. Full procedure is not shown. Certain sequences have been cut.