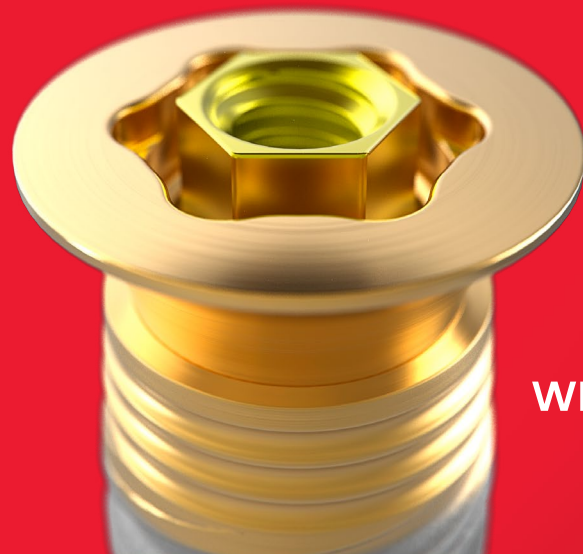




# On1™ concept

Product overview

[nobelbiocare.com/en-us/on1](https://nobelbiocare.com/en-us/on1)

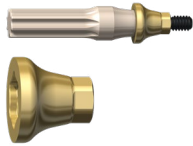


WE FOLLOW NO  
ONE.

# One base, many restorative options

## On1 Base Xeal incl. handle

	1.75 mm	2.5 mm
NP	300191	300192
RP	300193	300194
WP	300195	300196



Delivered with the corresponding On1 Clinical Screw

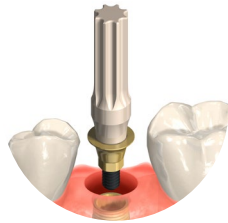
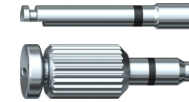
## On1 Clinical Screw

	1.75 mm	2.5 mm
NP	38744	38745
RP	38746	38747
WP	38748	38749



## On1 Base Screwdriver

Machine 21 mm	38752
Manual 25 mm	38753



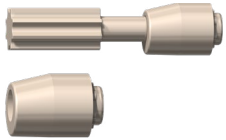
The On1 Base, IOS Healing Cap and Temporary Abutment are all delivered with a pre-mounted handle for easier placement.

# One base, many restorative options

## Digital workflow

### On1 IOS Healing Cap incl. handle

	4 mm	4.5 mm	5 mm	6 mm
NP		38735		38734
RP		38737		38736
WP	38739		38738	



Delivered with the corresponding On1 Prosthetic Screw

- To use as IOS Position Locator for DTX Studio and 3Shape
- To use as Desktop Position Locator for 3Shape

### On1 Desktop Position Locator for Single Abutment

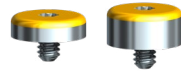
NP / RP / WP	300437
--------------	--------



## Conventional workflow

### On1 Healing Cap

	1.5 mm	2.5 mm
NP	38695	38696
RP	38697	38698
WP	38699	38700



### On1 Impression Coping

	Closed Tray	Open Tray
NP	38725	38728
RP	38726	38729
WP	38727	38730

# One base, many restorative options

## On1 IOS Replica

NP	38740
RP	38741
WP	38742



## On1 Base Replica

NP	38731
RP	38732
WP	38733



## On1 IOS Replica Insertion Tool

NP	38201
RP	38203
WP	38204



## On1 Esthetic Abutment Titanium 0.3 mm

NP	38713
RP	38714
WP	38715



Delivered with the corresponding On1 Prosthetic Screw

## On1 Temporary Abutment Engaging (single-unit) incl. handle

NP	38701
RP	38703
WP	38705



Delivered with the corresponding On1 Prosthetic Screw



SCAN



IOS



Desktop



DESIGN



DTX  
STUDIO™

3shape 

exocad



MANUFACTURE

In-house milling / printing



For in-house milled crowns use your DTX Studio™ Lab, 3Shape® or exocad software.  
Download the relevant DME at [nobelbiocare.com/openaccess](https://nobelbiocare.com/openaccess)



3shape 

exocad

# One base, many restorative options

## On1 Universal Abutment Engaging (single-unit)

	0.3 mm	1.25 mm
NP	301121	301122
RP	301123	301124
WP	301125	301126



Delivered with the corresponding On1 Prosthetic Screw and On1 Burn-out Coping

## On1 Prosthetic Screw

NP / RP / WP	38750
--------------	-------



## Unigrip Screwdriver Manual

20mm	29148
28mm	29149
36mm	29150



## Unigrip Screwdriver Machine

20mm	29151
25mm	29152
30mm	29153
35mm	29154



# One base, many restorative options

## On1 Laboratory Prosthetic Screw

NP / RP / WP

38751



## Manual Torque Wrench Prosthetic

29165



## Manual Torque Wrench Adapter

29167



---

## ORDER ONLINE

Order the complete range of our implants and prefabricated prosthetics 24 hours a day through the Nobel Biocare online store.

[store.nobelbiocare.com/us/en](https://store.nobelbiocare.com/us/en)

---

## ORDER BY PHONE

Contact your sales representative, or call our customer service team.

**800 322 5001**

---

## LIFETIME WARRANTY

On all Nobel Biocare implants including prefabricated prosthetic components. For further information visit:

[nobelbiocare.com/warranty](https://nobelbiocare.com/warranty)

[nobelbiocare.com/en-us/on1](https://nobelbiocare.com/en-us/on1)



87948 A US 2203 (Rev 00, 03/22) Printed in USA © Nobel Biocare USA, LLC, 2022. All rights reserved. Disclaimer: Nobel Biocare, the Nobel Biocare logotype and all other trademarks are, if nothing else is stated or is evident from the context in a certain case, trademarks of Nobel Biocare. Please refer to [nobelbiocare.com/trademarks](https://nobelbiocare.com/trademarks) for more information. Product images are not necessarily to scale. All product images are for illustration purposes only and may not be an exact representation of the product. Some products may not be regulatory cleared/released for sale in all markets. Please contact the local Nobel Biocare sales office for current product assortment and availability. Caution: Federal (United States) law or the law in your jurisdiction may restrict this device to sale by or on the order of a dentist or a physician. See Instructions For Use for full prescribing information, including indications, contraindications, warnings and precautions.