

# Clinical Case

## NobelReplace<sup>®</sup> Conical Connection

---

June 2012



# NobelReplace<sup>®</sup> Conical Connection



Professor Alessandro Pozzi  
Surgeon and Prosthodontist  
Italy

*„One year after placement the peri-implant bone level is well maintained by using the conical connection!“*



## **Anterior restoration**

Female patient  
50 years old

## **Implants:**

NobelReplace CC NP 3.5 x16mm  
NobelReplace CC RP 4.3 x16mm

## **Surgery date:**

January 29<sup>th</sup>, 2011

## **Minimal invasive implant placement**

## **Extraction with immediate implant placement and loading**

## **FDI POS:**

Teeth: 11 and 12

# NobelReplace® Conical Connection

*„NobelReplace Conical Connection is a new implant that merges the well-proven implant body of NobelReplace Tapered with a tight internal connection. It is a versatile, easy-to-use implant which performs well in soft and hard bone, getting an outstanding soft tissue integration and pink esthetics.“*

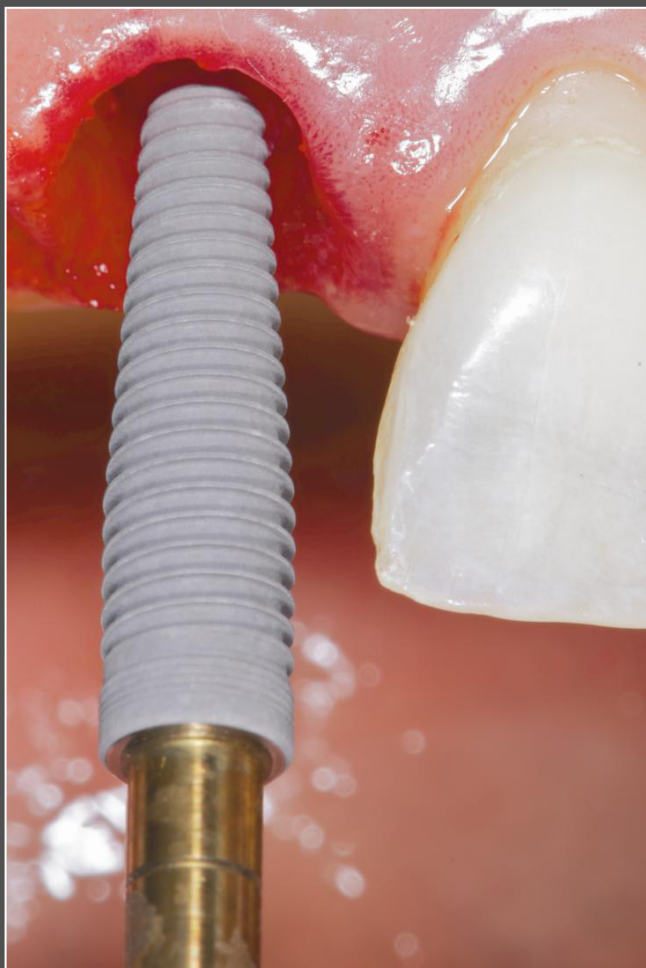
Prof. Alessandro Pozzi



Initial clinical situation:

Vertical fracture of upper right lateral and central incisors after trauma. Extraction of both teeth necessary

# NobelReplace® Conical Connection



Immediate placement of two NobelReplace Conical Connection implants (3.5x16mm and 4.3x16mm) 1 mm below the buccal crestal bone level. The drilling protocol has been customized underpreparing the implant site to achieve an adequate primary stability and preserve the mesial and distal bone peaks for papilla support. Immediate loading with prefabricated zirconia abutments and provisional crowns for optimal shape and gingival architecture.

# NobelReplace<sup>®</sup> Conical Connection



Placement of two individualized NobelProcera Abutments in shaded zirconia four months after surgery. The tight internal connection with in-built platform shifting supports the recovering process of the soft tissue and shortens the total treatment time.

# NobelReplace<sup>®</sup> Conical Connection



The definitive restoration 1 year after installment.

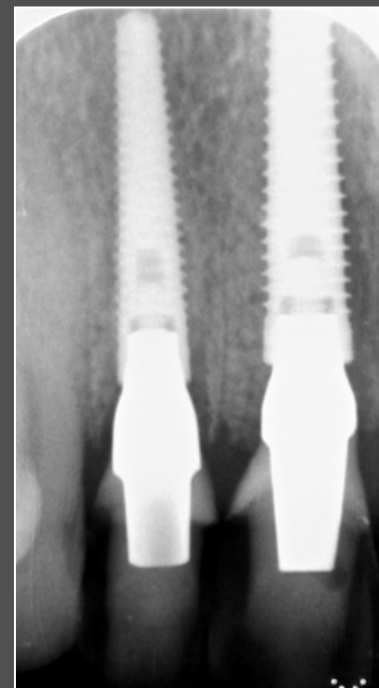
Two IPS e.max<sup>®</sup> CAD crowns by NobelProcera cemented on NobelProcera Abutments. The 1 year clinical view demonstrates excellent maintenance of soft tissue integration and architecture.

# NobelReplace® Conical Connection

## Radiographs



Peri-apical, pre-operative view



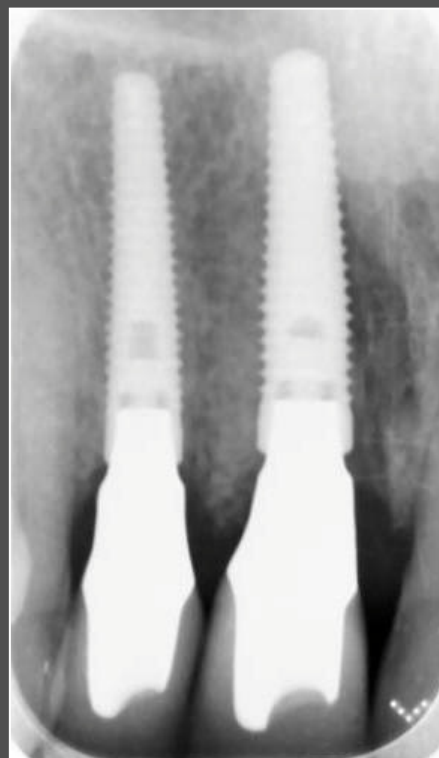
Peri-apical at implant insertion with prefabricated zirconia abutments used as a temporary abutment

# NobelReplace<sup>®</sup> Conical Connection

## Radiographs



Peri-apical of final restoration  
4 months after surgery



Peri-apical taken 1 year after implant  
placement demonstrates stable bone levels.