

Gap augmentation during immediate implant placement with immediate restoration



Dr. Bastian Wessing
Dr. med. dent.
Aachen, Germany

“What impressed me about this product was the variety of sizes and dosage forms, each offering very good handling properties.”



Patient:

Female
24 years old

Clinical situation:

Hopeless tooth 11 after traumatic accident with discoloring, persistent pain and mobility grad II.

Surgical solution:

Immediate implant placement with gap augmentation using creos xenogain (small granules).

Restoration solution:

Immediate provisional restoration.
Final restoration: NobelProcera ASC Abutment with veneered zirconia.

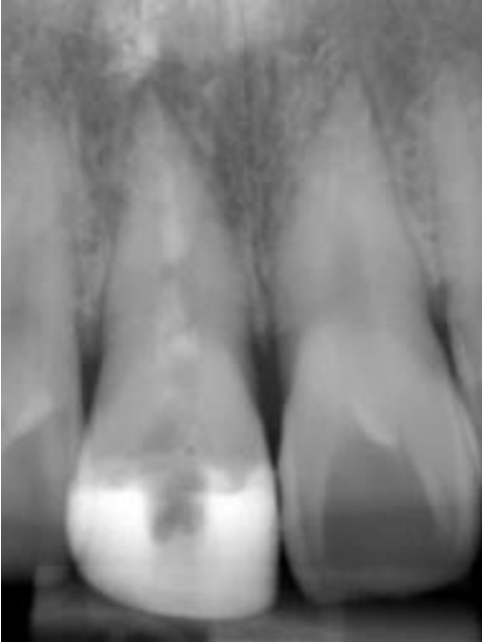
Surgery date:

GBR: May 7, 2016
Prosthetic restoration: August 10, 2016

Total treatment time:

Three months

Pre-operative situation



Pre-operative situation: single x-ray after three months of endodontic treatment after trauma.



Facial view of the clinical situation prior to surgery. Tooth 11 (FDI) appears discolored with persistent pain and mobility grade II (Miller).

Site preparation



Extraction of hopeless tooth 11 (FDI), with intact buccal bone.



Pilot-drill with a lab side drilling guide and extension drill into the alveolar-palatal bone.

Immediate implant placement



Immediate implant placement: NobelActive 4.3 x 13 mm.

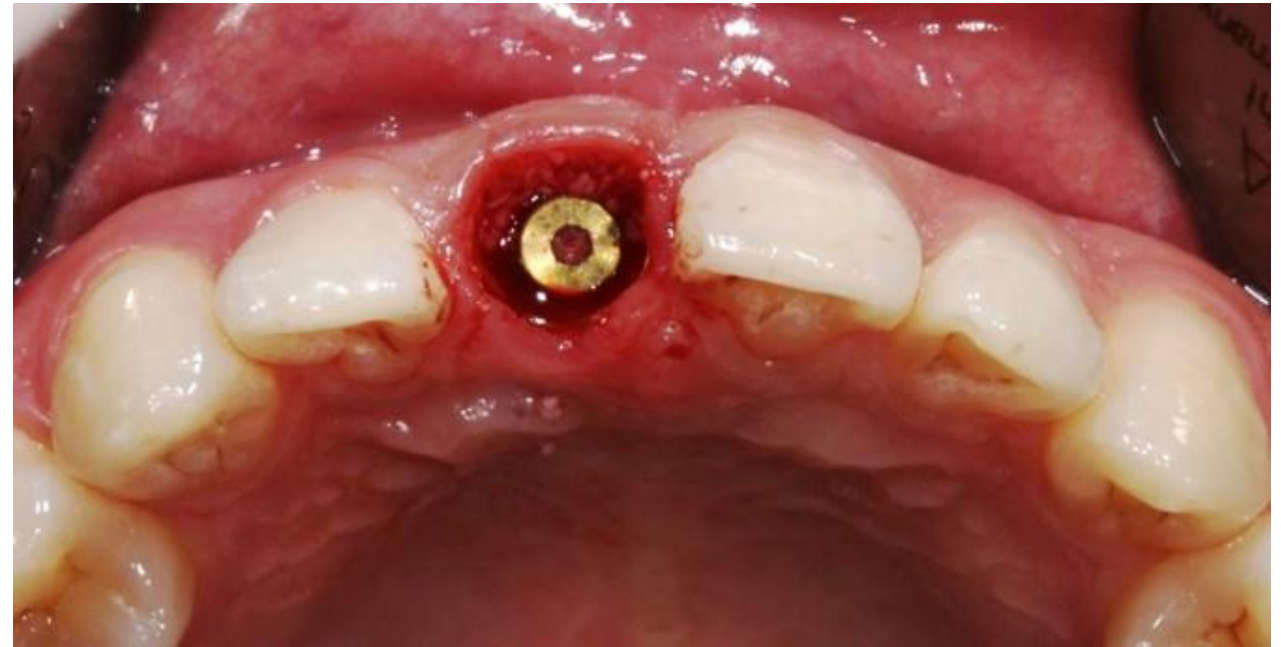


Optimized implant placement: slightly palatal without compression or even contact with the buccal bone.

Grafting procedure



Augmentation of the buccal gap with creos xenogain (small granules) to reduce bucco-palatal resorption of the alveolar ridge volume.



Occlusal view after gap augmentation.

Immediate implant placement



Panoramic radiograph after implant placement.

Immediate provisional restoration



Screw retained provisional titanium abutment after opaque application.



Facial view of a chairside provisional for immediate restoration.

Impression with impression coping



Occlusal view of the emergence profile after two months healing time.



Impression with an impression coping in an open tray technique.

Final restoration



Veneered zirconia NobelProcera ASC Abutment for a screw-retained single implant crown.



Side view of the finalized NobelProcera ASC Abutment with the Omnigrip screwdriver on the master cast.

Final restoration



Occlusal view of the final restoration after three months treatment time.
Note the slight bucco-palatal resorption of the alveolar ridge.



Facial view of the final restoration.

Final restoration



Facial view of the final restoration.

GMT 48867 © Nobel Biocare Services AG, 2016. All rights reserved. Distributed by: Nobel Biocare. Nobel Biocare, the Nobel Biocare logotype and all other trademarks are, if nothing else is stated or is evident from the context in a certain case, trademarks of Nobel Biocare. Please refer to nobelbiocare.com/trademarks for more information. Product images are not necessarily to scale. Disclaimer: Some products may not be regulatory cleared/released for sale in all markets. Please contact the local Nobel Biocare sales office for current product assortment and availability. For prescription use only. Caution: Federal (United States) law restricts this device to sale by or on the order of a licensed dentist. See Instructions for Use for full prescribing information, including indications, contraindications, warnings and precautions.

Case courtesy of Dr. Wessing, Germany