

Posterior solution: NobelProcera[®] Implant Crown with ASC



Luc and Patrick Rutten, Tessenderlo, Belgium

Patient:

Male, 52 years, missing a molar.

Clinical solution:

Dentist chose a NobelActive WP Implant with a screw-retained implant crown.

Restorative solution:

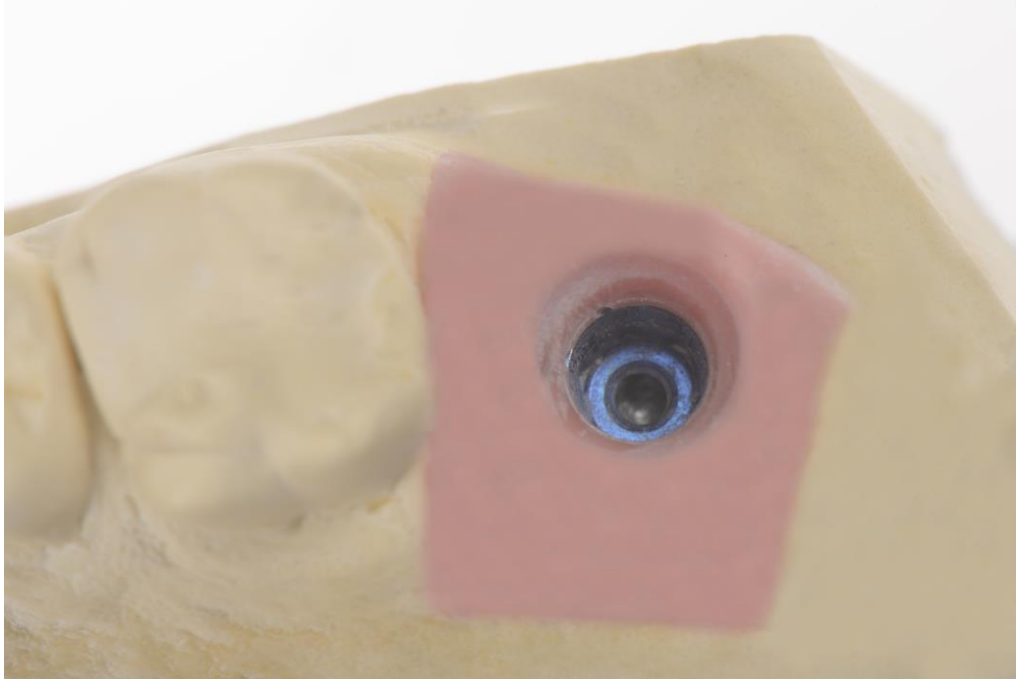
Posterior solution with the intention to restore function and to enhance esthetics.

NobelProcera Implant Crown with an angulated screw channel was designed using the NobelProcera 2G Scanner and NobelDesign software.

The buccal plane was reduced by 0.5 mm in the software in order to layer a little bit of dentine and translucency/enamel.

The restoration was designed and manufactured with minimum occlusal layering to reduce risk of chipping.

Posterior solution: NobelProcera® Implant Crown with ASC

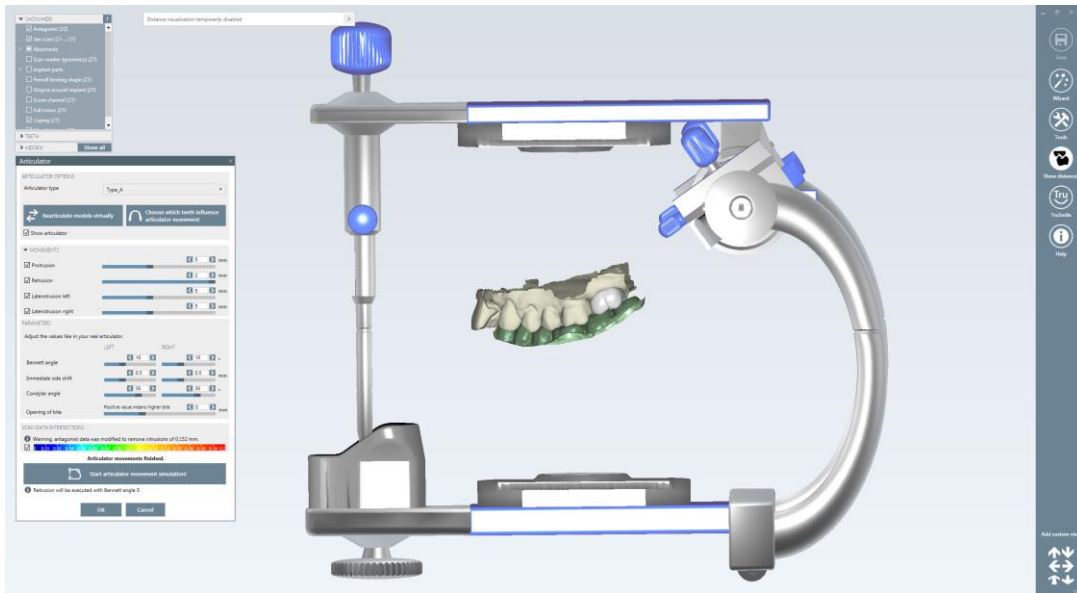


Master model with flexible gingiva mask and 5 mm diameter implant replica

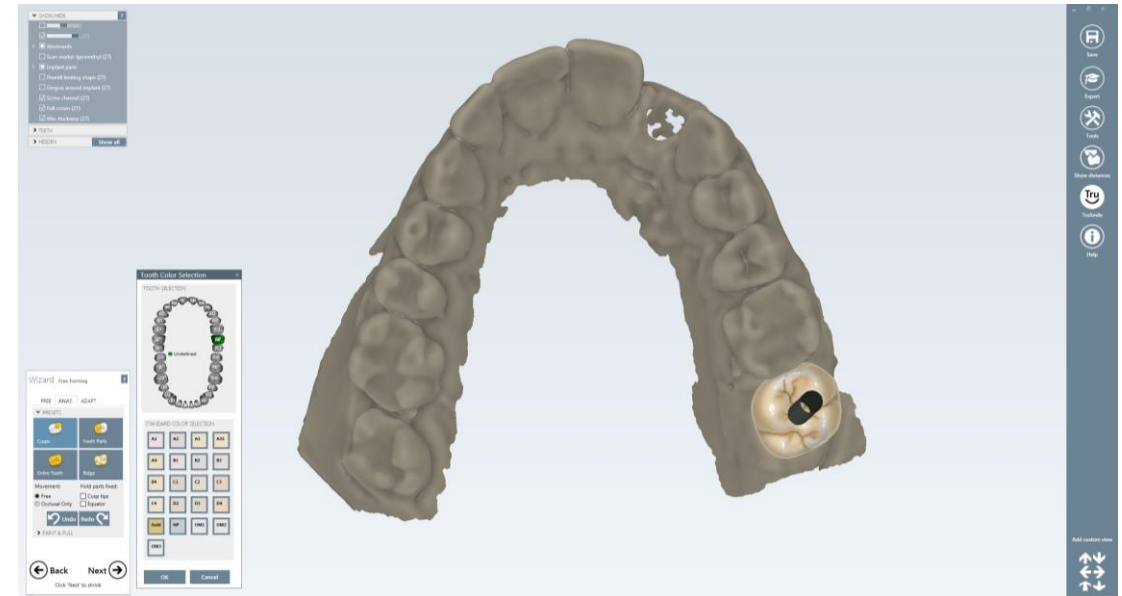


Master model with guide pin showing the inclination of the implant.

Posterior solution: NobelProcera[®] Implant Crown with ASC



NobelDesign virtual articulator was used to check contact points and excursions.



TruSmile feature in NobelDesign software shows the final esthetic outcome.

Posterior solution: NobelProcera[®] Implant Crown with ASC



Design of the NobelProcera Implant Crown is submucosally concave to the implant.



Due to the more distal position of the implant, the screw access hole was tilted mesially by 20°. Clinician can now access and place the NobelProcera Implant Crown easily.

Posterior solution: NobelProcera® Implant Crown with ASC



Small parts of ceramic applied occlusally to improve the function and esthetics.

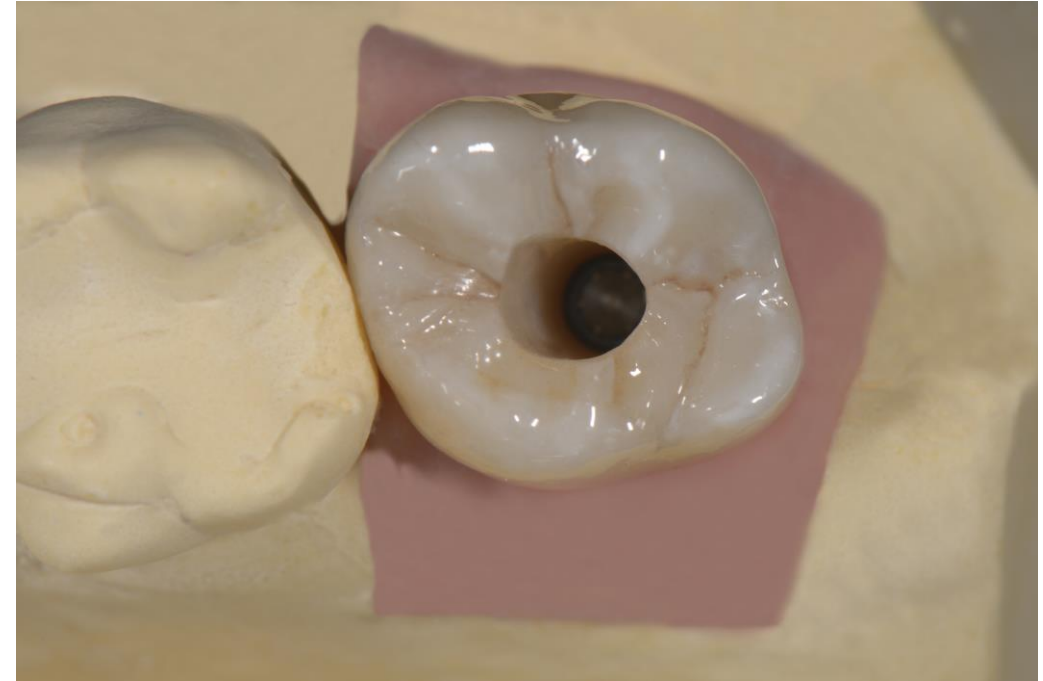


After firing the dentin and enamel parts, the occlusal plane was stained with white and brown stains mixed with glaze.

Posterior solution: NobelProcera[®] Implant Crown with ASC



Finished full-contour NobelProcera Implant Crown.



Occlusal view of finished NobelProcera Implant Crown on the master model.

Posterior solution: NobelProcera[®] Implant Crown with ASC



Buccal view of finished NobelProcera Implant Crown on the master model.

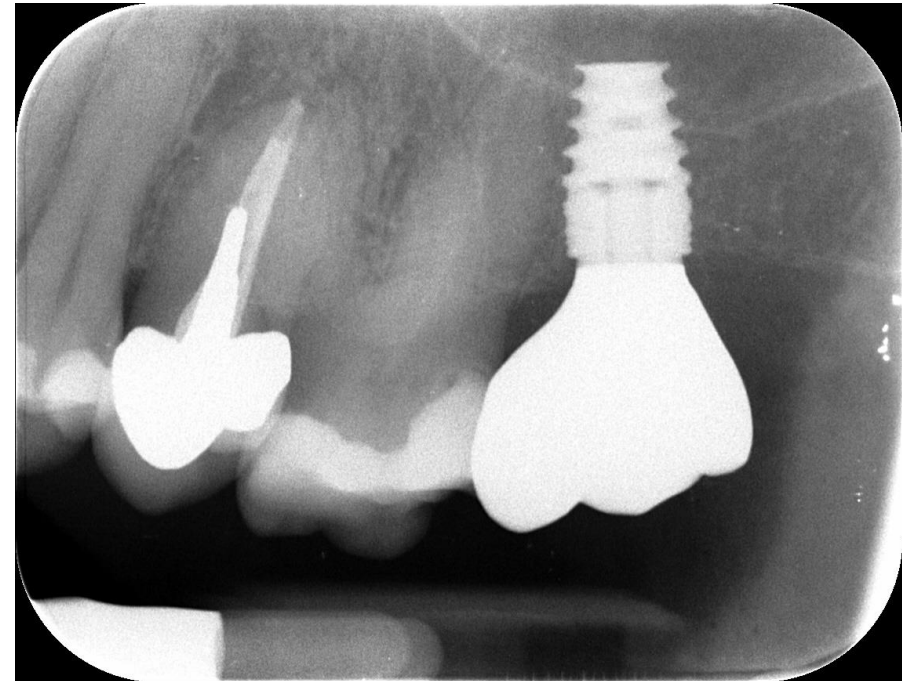


Finished NobelProcera Implant Crown in transmitted light.

Posterior solution: NobelProcera[®] Implant Crown with ASC



Final NobelProcera Implant Crown in patient's mouth. The transition between the implant crown and soft tissue looks natural thanks to an optimized emergence profile.



Control X-ray following crown delivery.